

2 x Airbus A330-300



Registration: 9V-SSH and 9V-SSI

GENERAL DATA

Data as of	31 January 2021	
Registration	9V-SSH	9V-SSI
Date of manufacture	21 August 2015	29 September 2015
Current Operator	Singapore Airlines	
Total Time Airframe	19,426	18,450
Total Cycles Airframe	5,318	4,981
Seating Configuration	Total: 285 - 30 C (Business) + 255 Y (Economy)	
Aircraft Status	In maintenance / storage with Singapore Airlines	

LANDING GEAR

SAFRAN

Data as of	31 January 2021	
LH MLG Part Nr	10-210101-009	
Serial Nr	MDL1596	MDL1612
TSN / CSN	19,426 / 5,318	18,450 / 4,981
Next Overhaul - Date	27 July 2025	18 September 2025
NLG Part Nr	D23581100-20	
Serial Nr	15B33459	15B34847
TSN / CSN	19,426 / 5,318	18,450 / 4,981
Next Overhaul - Date	27 July 2025	18 September 2025
RH MLG Part Nr	10-210101-009	
Serial Nr	MDL1596	MDL1612
TSN / CSN	19,426 / 5,318	18,450 / 4,981
Next Overhaul - Date	27 July 2025	18 September 2025

AUXILIARY POWER UNIT

HONEYWELL GTCP331-350C

ON CONDITION

Data as of	21 December 2020	29 February 2020
Part Number	3800454-6	3800454-6
Serial Number	P-1885	P-1701
TSN	6,929	10,050
CSN	4,767	7,101
Date Last Overhaul	June 2021 (*)	July 2021 (*)
TSOH	0	0
CSOH	0	0

(*) the overhauls will be carried out before Delivery.

	Engine 1	Engine 2	Engine 1	Engine 2
Data as of	31 January 2021		31 January 2021	
Serial Nr	42596	42597	42627	42628
Current Position	Shop	#2	Shop	#2
TSN	18,673	17,632	16,818	18,450
CSN	5,072	4,934	4,632	4,981
Last Refurb./OVH	May 2021	May 2021	January 2021	July 2021
TS Refurb./OVH	0	0	0	0
CS Refurb./OVH	0	0	0	0
Life Limited Parts - Remaining Life (cycles)				
<i>LP Compressor</i>				
Fan Disc	7,938	8,076	8,378	8,029
Fan Shaft	9,928	10,066	10,368	10,019
<i>IP Compressor</i>				
IPC Drum	7,528	7,666	7,968	7,619
IP Stub Shaft	9,928	10,066	10,368	10,019
<i>HP Compressor</i>				
HPC 1-6 Drum (a)	6,000	6,000	6,000	6,000
<i>HP Turbine</i>				
HPT Disc (a)	9,000	9,000	9,000	9,000
<i>IP Turbine</i>				
IPT Shaft	9,928	10,066	10,368	10,019
IPT Disc	9,928	10,066	10,368	10,019
<i>LP Turbine</i>				
LPT Shaft	9,928	10,066	10,368	10,019
Stage 1 Rotor Disc	9,928	10,066	10,368	10,019
Stage 2 Rotor Disc	9,928	10,066	10,368	10,019
Stage 3 Rotor Disc	9,928	10,066	10,368	10,019
Stage 4 Rotor Disc	9,928	10,066	10,368	10,019
Fan Blades - Limiting	9,264	9,402	9,704	9,355
Annulus Fillers - Limiting	6,928	7,066	7,368	7,019

(a) these LLPs will be replaced by new parts before Delivery.

Limiting Life Limited Part

	Weights in kg		Weights in lbs	
Maximum Take-Off Weight	233,000		513,676	
Maximum Landing Weight	187,000		412,264	
Maximum Zero Fuel Weight	175,000		385,808	
Operating Empty Weight	1648: 130,753	1666: 130,443	1648: 288,256	1666: 287,573
Maximum Usable Fuel	78,024		172,043	

MAINTENANCE STATUS

CURRENT PROGRAM: AIRBUS MPD

A-Check - Interval	1,000 FH	
Last Performed - FH	19,401	18,450
Last Performed - Date	12 March 2020	27 February 2020
C1-Check - Interval	24 Months or 12,000 FH	
Next Due - Date	11 August 2021 (*)	08 September 2021 (*)
C2-Check - Interval	48 Months or 24,000 FH	
Next Due - Date	(*)	(*)
HMV1-Check - Interval	6 years	
Next Due - Date	23 August 2021 (*)	28 September 2021 (*)
HMV2-Check - Interval	12 years	
Last Performed - Date	N/A	N/A
Next Due - Date	22 August 2027	27 September 2027

(*) these checks will be carried out before Delivery.

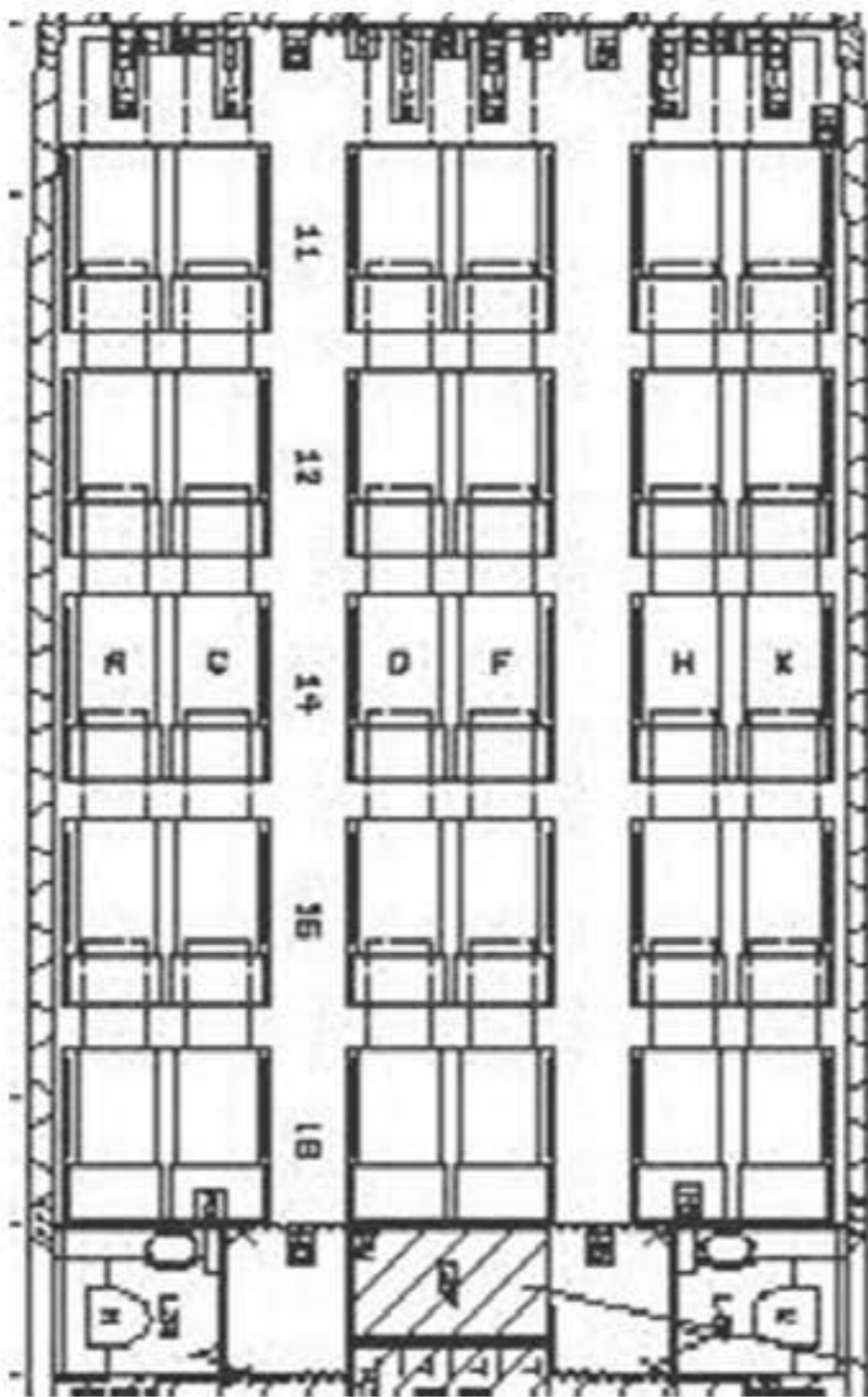
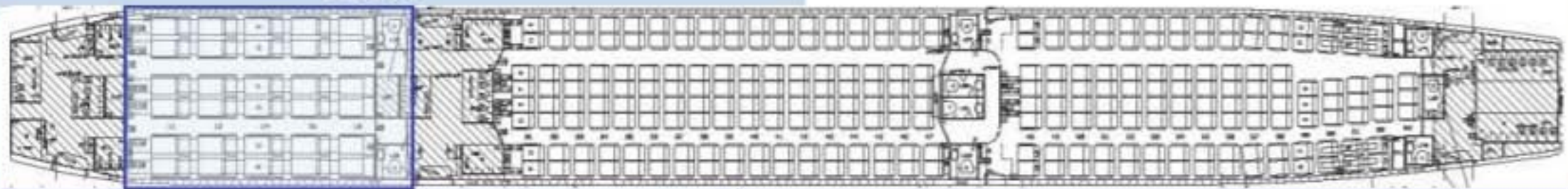
CARGO CONFIGURATION

AREA	CLASS	MAXIMUM LOAD (KG)	MAXIMUM LOAD (LBS)
Forward	C	22,861	50,408
Aft	C	18,507	40,808
Rear (Bulk)	C	3,468	7,645
Cargo Loading System	Fitted		

ADDITIONAL FEATURES

Secured Cockpit Door with Video System	

LOPA



BUSINESS CLASS

Seats

Number	30
Manufacturer	Zodiac Seats US
Model	862218-4xx
Pitch	60 in
Abreast	6
Width	24.5 in
Recline	70°

In Flight Entertainment

Manufacturer	Panasonic Corp.
Screens - Number	30
Screens - Size	15.4"
Screens - Location	Back Seat
Video	On Demand
Seat Plugs	110V AC & USB

Lavatories

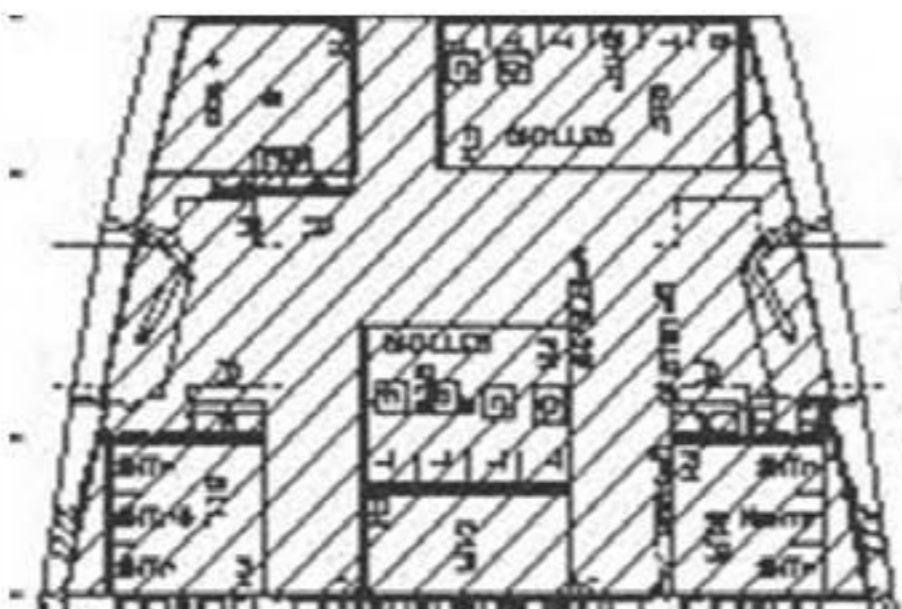
Number	2
Manufacturer	Diehl

Cabin Attendant Seats

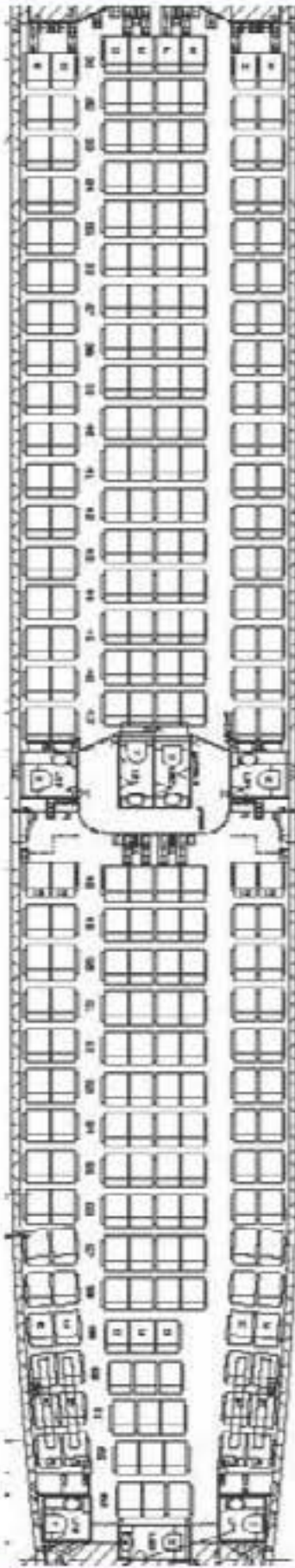
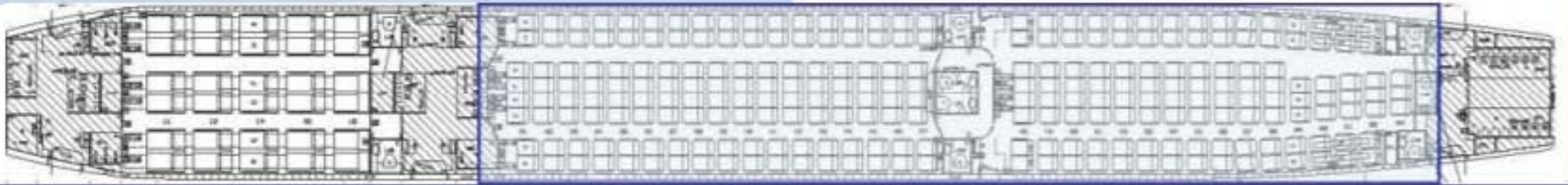
Number	6
Manufacturer	AMI Industries

Galleys G1 - Standard: ATLAS

Manufacturer	Jamco
Location	Doors 1
Chilled Compartment	6
Water Boiler	1
Coffee/Espresso Maker	1 / 2
Steam/Microwave Oven	3 / 1
Standard Unit	5
Trolley	12 HS + 2 FS
(HS = Half Size / FS = Full Size)	+ 14 HS or 7 FS



LOPA



ECONOMY CLASS

Seats

Number	255
Manufacturer	Zodiac Seats US
Model	868457-4xx
Pitch	32 / 31 in
Abreast	8
Width	19 in
Recline	10°

In Flight Entertainment

Manufacturer	Panasonic Corp.
Screens - Number	255
Screens - Size	10.6"
Screens - Location	Back Seat
Video	On Demand
Seat Plugs	110V AC & USB

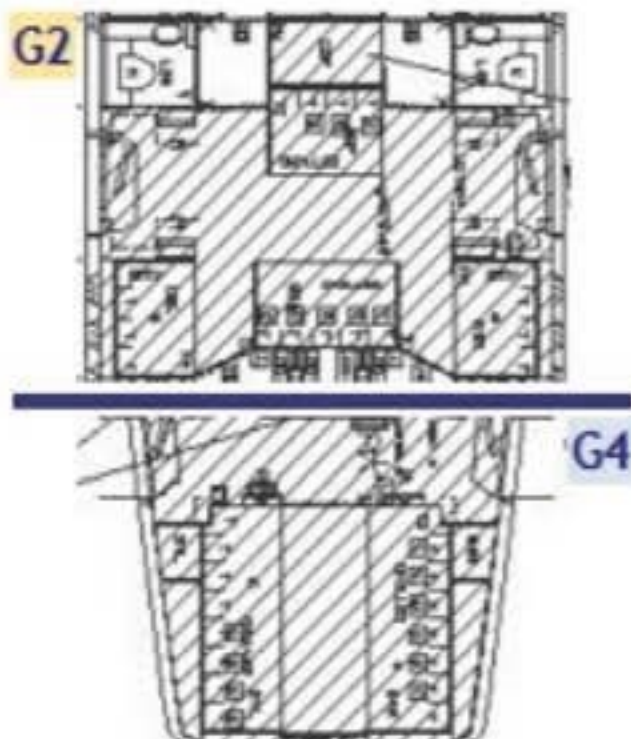
Lavatories

Number	7
Manufacturer	Diehl

Cabin Attendant Seats

Number	7
Manufacturer	AMI Industries

Galleys G2 & G4 - Standard: ATLAS



Manufacturer	Jamco	
Location	Doors 2	Rear Cpt
Chilled Compartment	8	10
Water Boiler	2	2
Coffee/Expresso Maker	2 / 0	2 / 0
Steam/Microwave Oven	5 / 0	4 / 0
Standard Unit	15	13
Trolley	4HS+12FS	12 FS
(HS = Half Size / FS = Full Size)	+4HS or 2FS	+6HS or 3FS

AVIONICS

DESCRIPTION	MANUFACTURER	P/N	NR
Flight Mgt Guidance & Envelope Computer (FMGEC)	Thales	C13200HA07	2
Audio Management Unit (AMU)	Team	AMU4031LA140204	1
Cabin Intercomm. Data System (CIDS) Director	Airbus	Z013H011260A	2
HF Transceiver	Rockwell Collins	822-0990-003	2
SDU-SATCOM	Rockwell Collins	822-0314-350	1
SSCVR - Cockpit Voice Recorder	L-3 Communications	2100-1026-02	1
VHF Transceiver	Rockwell Collins	822-1287-121	3
Transmitter Fixed ELT	Thales Avionics	S1821502-02	1
Transmitter Removable ELT	Honeywell	1153426-1M563	1
Flight Data Management Interface Unit (FDMIU)	Teledyne	2234340-02-02	1
Flight Warning Computer (FWC)	Airbus	LA2E20202T70000	2
System Data Acquisition Concentrator (SDAC)	Airbus	LA2E50700C90000	2
SSFDR - Flight Data Recorder	Honeywell	2100-4045-00	1
Wireless Quick Access Recorder	Teledyne	2243800-362	1
ADF	Rockwell Collins	822-0299-020	2
Air Data Inertial Reference Unit (ADIRU)	Honeywell	HG2030BE04	3
ATC Transponder	Honeywell	066-01127-1402	2
DME Transceiver	Rockwell Collins	822-2325-020	2
Multi-Mode Receiver (MMR)	Rockwell Collins	822-1821-430	2
Radio Altimeter Transceiver	Rockwell Collins	822-0334-020	2
TCAS II	Honeywell	940-0351-001	1
VOR/MKR Receiver	Rockwell Collins	822-0297-020	2
Weather Radar Transceiver	Rockwell Collins	822-1710-214	2
Central Maintenance Computer (CMC)	Thales	LA2G007001D0000	2
Air Traffic Service Unit (ATSU)	Airbus	LA2T0G20705C070	1

AIRCRAFT CAPABILITY

TCAS	II Change 7.1	WINDSHEAR	Forward Looking Detection & Avoidance
RVSM	Yes	PBN	RNP-10
ADS-B	Yes (DO-260)	MNPS	Yes
FANS	A+	ETOPS	Capability & Current Compliance: 180 mn

IMPORTANT

This specification has been produced by AMS Aircraft Services Limited from the information available to it and to the best of its knowledge, it is correct at the date specified above. However, it is subject to verification by potential purchasers who should only rely on their own inspection of the Aircraft and records.

The information above does not constitute an offer and any proposed transaction is subject to availability and to final execution of a contract.



Passenger Cabins



Business Class



Business Class



Economy Class



Economy Class

Cockpit



Cargo

