

MODULAR INTEGRATED BUILDING SOLUTIONS

True Blue



40 YEARS OF INTERNATIONAL TRADING





new factory with advanced equipment covers an area of 38,000m². 120 workers monthly capacity to 1350 units of flat pack containers and 450 units of modified containers.

We are proud to offer our modular buildings with widespread application. Camps, disaster relief, oil & gas/mining sectors, hotels, hospitals, schools, shops, restaurants and rental buildings are some examples just to name a few. With our superior products and service, we hope to exceed the needs and expectations of all our customers.

Available certification for materials on House productions:



FACTORY EQUIPMENT



Roof And Floor Cold Drawing Machine



Roof And Floor Assembly Platform



Laser Cutting Machine



ISO Roof Punching Machine



ISO Roof Automatic Welding Machine



Plate Shearing Machine



Bending Machine



Punching Machine



Roof Short Beam Automatic Welding Machine



Corner Post Automatic Welding Machine



Corner Post Grinding Machine



Corner Casting Six Axis Threading Machine



Corner Casting Six Axis Drilling Machine



Floor Board Seven Holes Drilling Machine



Automatic Painting Line

APPLICATION FILEDS

Star house flat pack containers and modified containers can be widely used in the following fields:



Integrated Camp



Office



Classroom



Residence



Hotel



Canteen

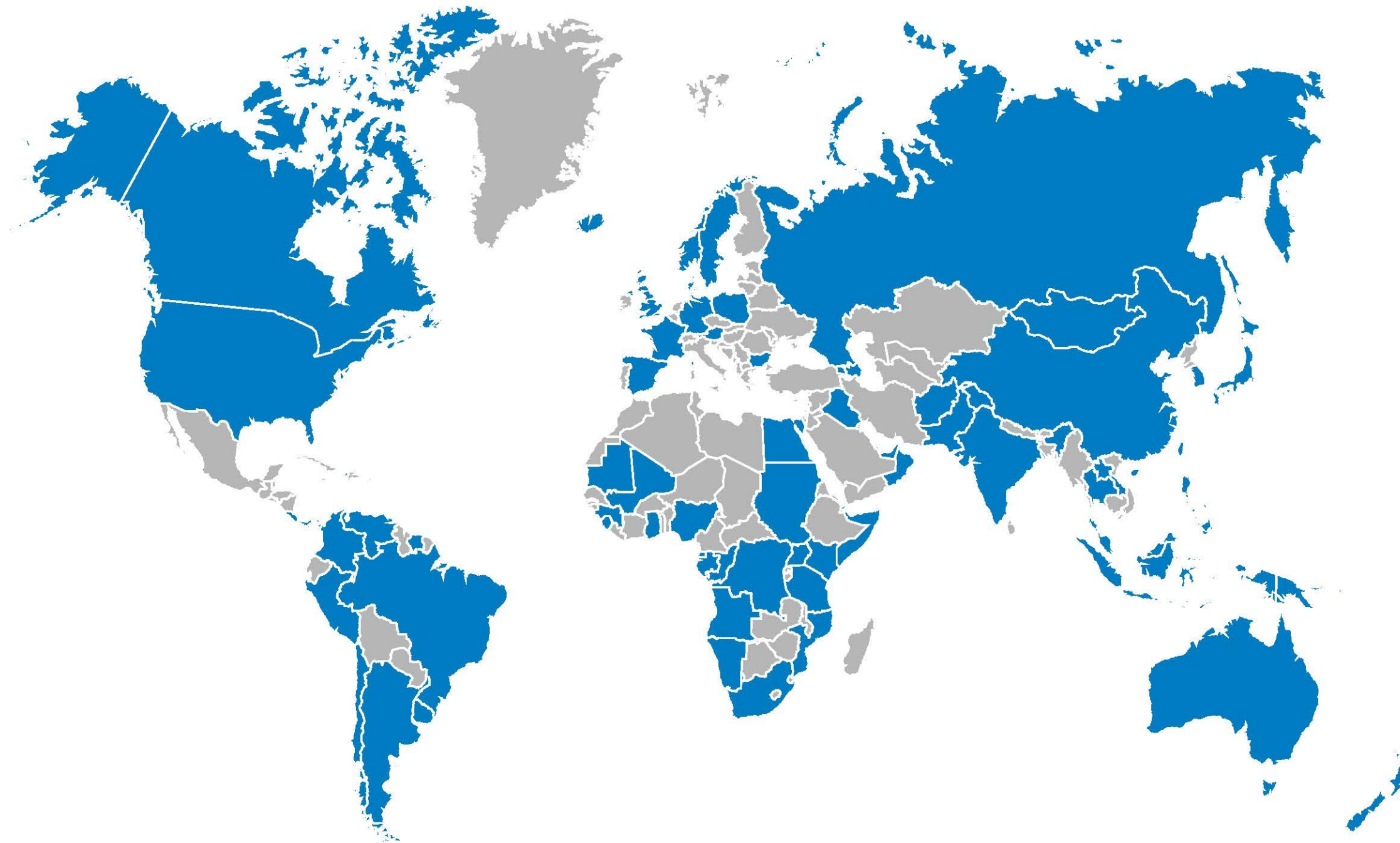


Shop



Toilet And Shower

SOLD AREA



Asia

Afghanistan, Azerbaijan, China, East Timor, India, Indonesia, Iraq, Japan, Laos, Malaysia, Mongolia, Oman, Pakistan, Philippines, Qatar, Singapore, South Korea, Thailand, United Arab Emirates

Africa

Angola, Congo, Djibouti, Egypt, Equatorial Guinea, Gabon, Ghana, Guinea, Kenya, Mali, Mauritania, Mozambique, Namibia, Nigeria, Reunion, Sierra Leone, Somalia, South Africa, Sudan, Tanzania, Uganda

Europe

Armenia, Austria, Britain, Bulgaria, Denmark, France, Germany, Iceland, Norway, Poland, Russia, Spain, Sweden

North America

America, Canada

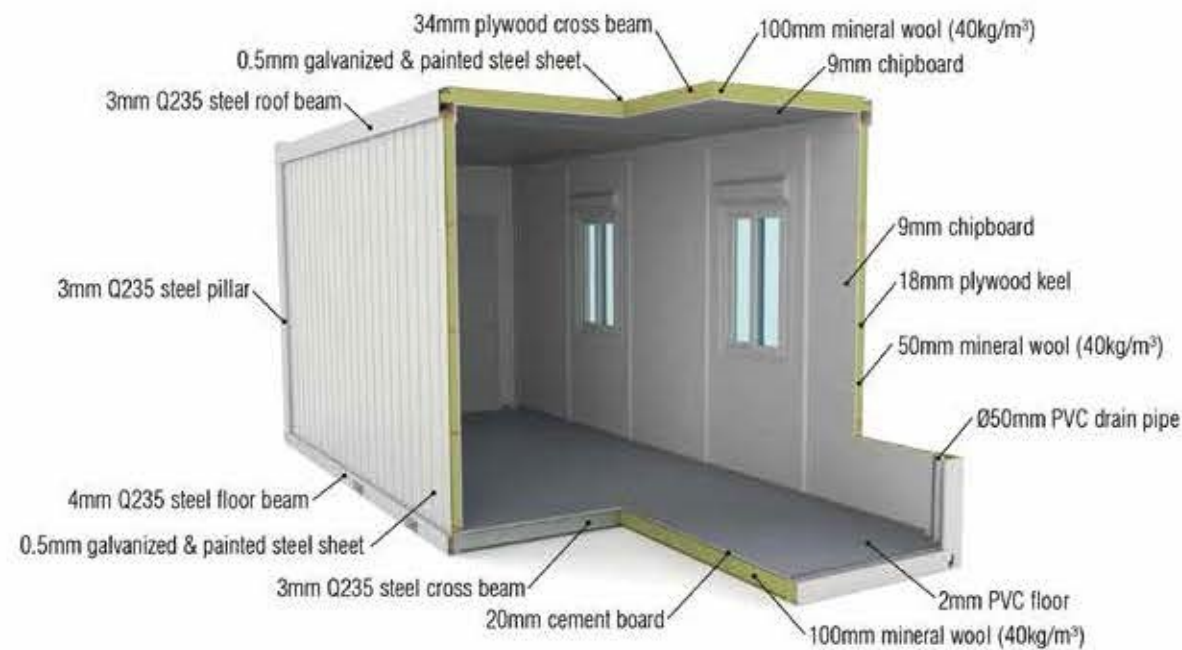
Oceania

Australia, New Caledonia, New Zealand, Papua New Guinea, Solomon Islands

South America

Argentina, Brazil, Chile, Colombia, Costa Rica, Dominica, French Guadeloupe, Haiti, Panama, Peru, Suriname, Trinidad and Tobago, Uruguay, Venezuela

FLAT PACK CONTAINER



Flat pack container is a multi-function standard container, which dimensions conform to the ISO container transportation. It is a prefabricated building structure composed of roof, floor and pillars. This structure enables the containers to combine in longitudinal and transverse directions without limits, or be stacked in 2 floors or 3 floors in height.

The walls of the container are made of light insulation panels, and the position can be adjusted as needed. In the process of transportation, the flat pack containers can be packed in the form of 4 per bundle which height is 2591 mm(ISO dimensions).

Advantages



Easy Transportation

Flat pack containers are designed according to ISO shipping containers, which makes them suitable for ocean freight. Each unit has forklift pockets on the floor for handling.



Fast Construction

4 skilled workers can finish assembling 1 standard unit within 2.5 hours; Up to 40% time saving on construction over traditional building techniques.



Flexible Combination

Multiple modular building can be easily created by stacking and interlinking units together. Internal wall panels can be removed and changed at the clients' discretion to provide flexible layout options.



Cost Saving

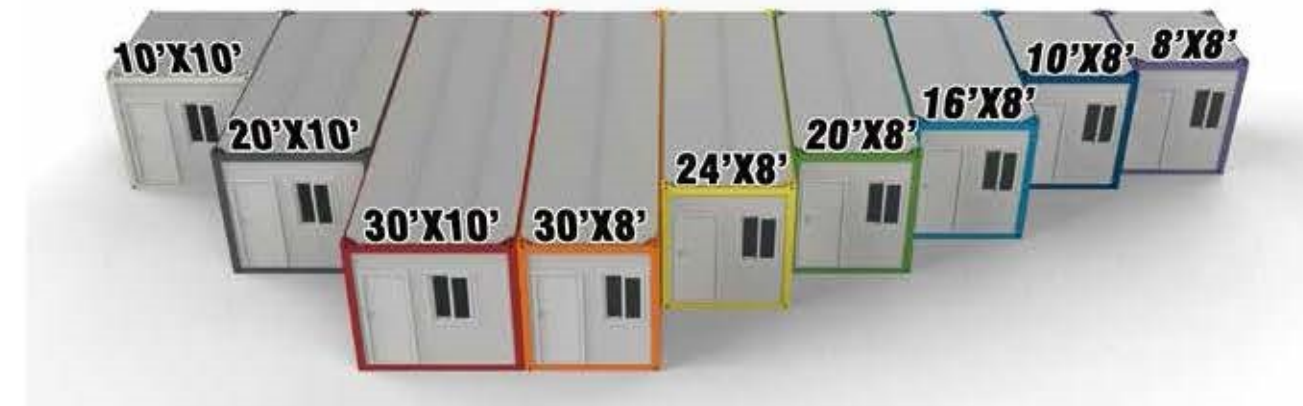
3-6 units can be packed in one bundle; up to 75% transportation cost can be saved compared with Traditional Architecture or modified containers.



Green & Sustainable

The steel structure of cabin can be recycled. Our manufacturing facilities are energy efficient with strict governance on wastage of materials and water supply.

Dimensions



| Type | External Dimensions(mm) | | | Internal Dimensions(mm) | | | Weight(kg) |
|----------------------------------|-------------------------|-------|--------|-------------------------|-------|--------|------------|
| | Length | Width | Height | Length | Width | Height | |
| 20'X8' Standard Unit | 6058 | 2438 | 2791 | 5858 | 2238 | 2520 | 2000 |
| 8'X8' Mini Corridor Unit | 2438 | 2438 | 2791 | 2238 | 2238 | 2520 | 1100 |
| 10'X8' Short Unit | 3025 | 2438 | 2791 | 2825 | 2238 | 2520 | 1250 |
| 16'X8' Corridor Unit | 4888 | 2438 | 2791 | 4688 | 2238 | 2520 | 1700 |
| 24'X8' Extra Unit | 7200 | 2438 | 2791 | 7000 | 2238 | 2520 | 2300 |
| 30'X8' Ultra Long Unit | 9000 | 2438 | 2791 | 8800 | 2238 | 2520 | 2750 |
| 20'X10' Ultra Wide Unit | 6058 | 2990 | 2791 | 5858 | 2790 | 2520 | 2220 |
| 10'X10' Mini Ultra Wide Unit | 3025 | 2990 | 2791 | 2825 | 2790 | 2520 | 1400 |
| 30'X10' Ultra Wide And Long Unit | 9000 | 2990 | 2791 | 8800 | 2790 | 2520 | 2980 |

*Also available with external height 2591mm(8'6")/2896mm(9'6"), Maximum height 3000mm.

20ft Flat Pack Container Model



SH101

The basic flat pack unit. Suitable for offices, bedrooms, change rooms, and site accommodation houses etc.



SH114

VIP unit. Site office, holiday cabin or accommodation including private shower and toilet.



SH104

Two separate rooms can be used as dormitories or offices etc.



SH111

Two rooms with bath and toilet. Suitable for accommodation.



SH114A

Two single rooms with public bath 2 basins for each rooms.



SH115

Office or accommodation includes private bath and toilet.



Ablution Unit

3 showers, 3 toilets, 4 washbasins and 2 urinals.



Toilet Unit

6 toilets, 6 washbasins, also can replace washbasins into urinals for male toilet.



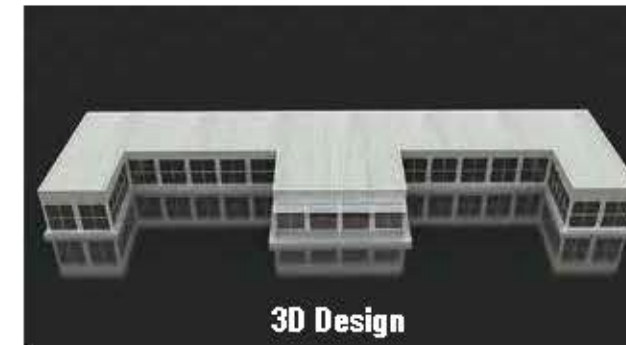
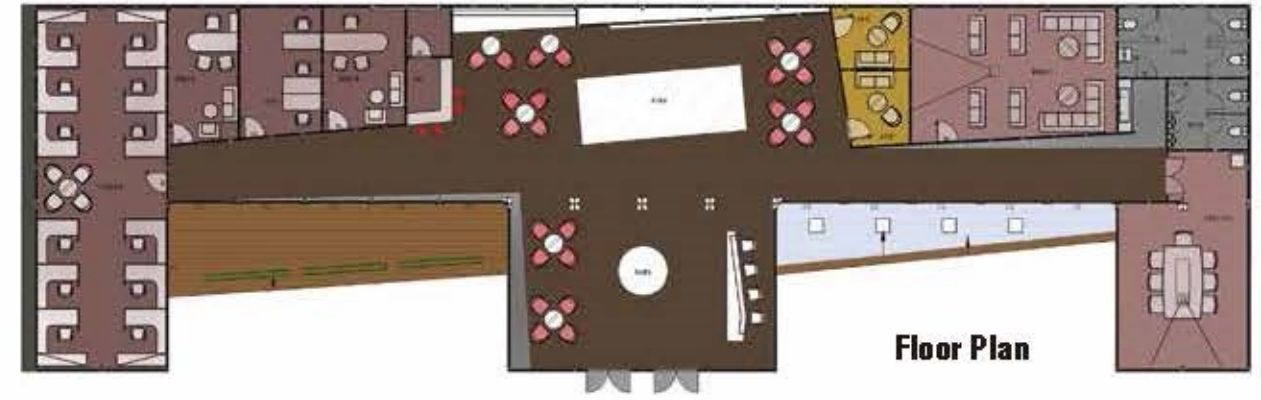
Shower Unit

6 showers, 6 washbasins and water heater is also available.

Project & Layout



Location: Wuxi, China
Application: Sales Office
Project Profile: 7200mm*2438mm*18 units + 6058mm*2438mm*8 units total





Location: Shenzhen, China
 Application: Office
 Project Profile: 3 floor building, 6058mm*2990mm*87 units
 + 1930mm*5992mm*5 units total



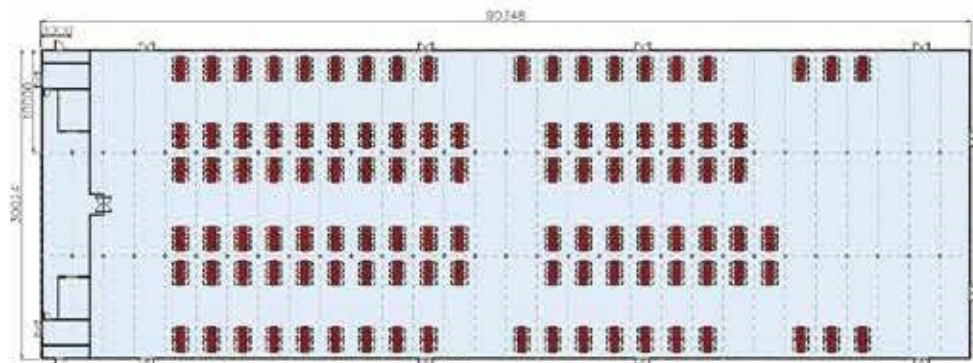
Location: Beijing, China
 Application: Office
 Project Profile: 4 floor building, 5500mm*4000mm*90 units total



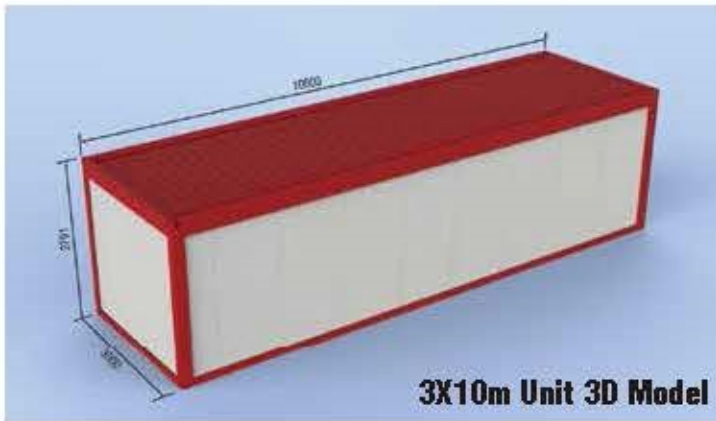
Floor Plan



Location: Chile
 Application: Dining hall
 Project Profile: 1 000mm*3000mm*90 units Total



Floor Plan



3X10m Unit 3D Model



Location: Chile
 Application: Hospice
 Project Profile: 3 floor buidng, 6060mm*3000mm*25 units
 + 6000mm*3000mm*2 units + 4530*2500*4 units total

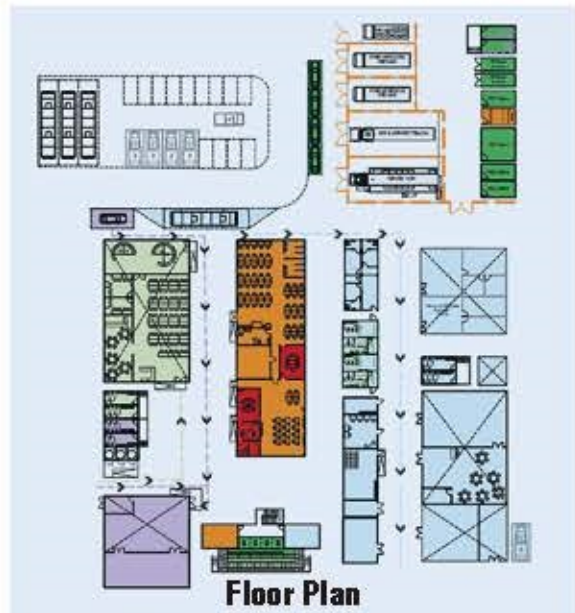


3D Design





Location: Baku, Azerbaijan
 Application: Games Venues Cabins & Toilets
 Project Profile: 2438mm*5800mm*68 units + 2000mm*4000mm*1 unit + 1500*5800*10 units + 2900mm*5800mm*4 units total



Location: Hawaii, America
 Application: Residence
 Project Profile: 6058mm*2438mm*3 units total with roof system

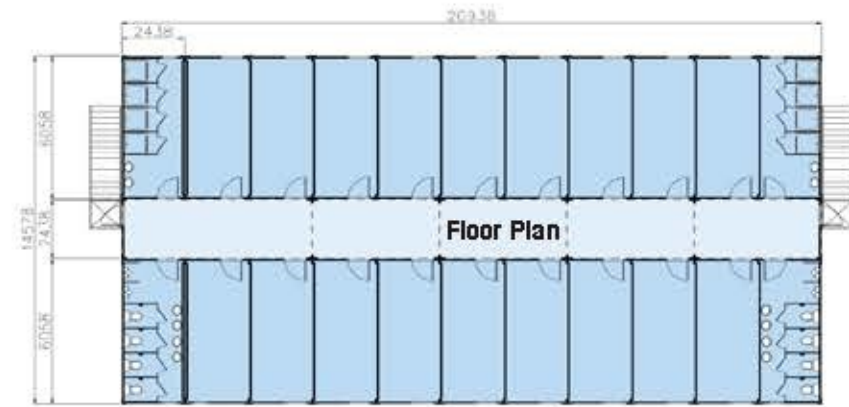




Location: Dubai, United Arab Emirates
 Application: Office
 Project Profile: 2000m² area



Location: Kandahar, Afghanistan
 Application: Military Camp
 Project Profile: 6058mm*2438mm*220 units + 4888mm*2438mm*40 units + 7338mm*2438mm*10 units total with roof system



MODIFIED CONTAINER



Modified container is a custom product based on the ISO shipping container. Openings can be made on the containers to install doors and Windows according to the requirements. All the work can be completed in the factory including insulation and decoration, even installation for furniture and sanitary fittings. After protecting the openings, the modified container can be transported as a ISO shipping container. It can be put into use after little work when arriving at the destination. The modified containers can used separately as accommodation, office, or bathroom, and also can combine or stack them as needed.



Advantages



Sturdy And Durable

Modified containers can be stacked maximum 7 floors, also they can last more than 30 years.



Customized Design

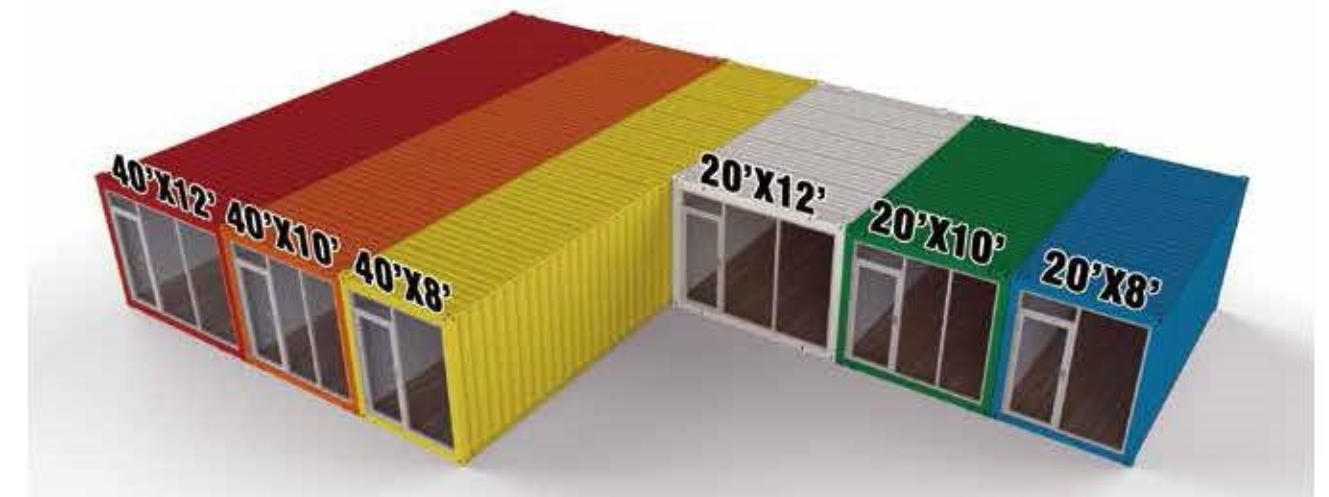
Modified containers can be customized designed in special dimension, layout and materials, to meet different standard and requirement.



Fully Equipped

Modified containers can be equipped with pre-installed internal fittings, such as furniture and sanitary fittings, this makes the setup easy and saves labor on site.

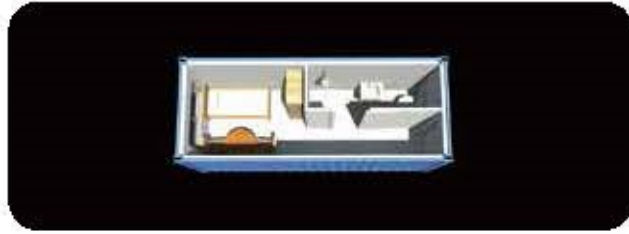
Dimensions



| Type | External Dimensions(mm) | | | Internal Dimensions(mm) | | | Weight(kg) |
|----------------------|-------------------------|-------|--------|-------------------------|-------|--------|------------|
| | Length | Width | Height | Length | Width | Height | |
| 20*8' Modified Unit | 6058 | 2438 | 2896 | 5878 | 2258 | 2700 | 4000 |
| 20*10' Modified Unit | 6058 | 3000 | 2896 | 5878 | 2820 | 2700 | 4500 |
| 20*12' Modified Unit | 6058 | 3658 | 2896 | 5878 | 3478 | 2700 | 5000 |
| 40*8' Modified Unit | 12192 | 2438 | 2896 | 12012 | 2258 | 2700 | 7200 |
| 40*10' Modified Unit | 12192 | 3000 | 2896 | 12012 | 2820 | 2700 | 8000 |
| 40*12' Modified Unit | 12192 | 3658 | 2896 | 12012 | 3478 | 2700 | 8800 |

*Also available with external height 2591mm(8'6"), maximum length 18000mm and maximum width 4200mm for customization.

20ft/40ft Modified Container Model



8 x 20ft Starter unit Model:MC-2001



8 x 40ft Starter unit Model:MC-4001



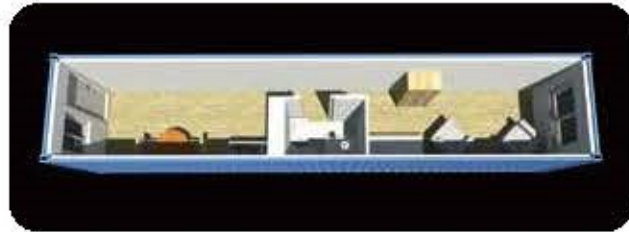
8 x 40ft Bachelor unit Model:MC-4002



8 x 40ft Manager unit Model:MC-4003



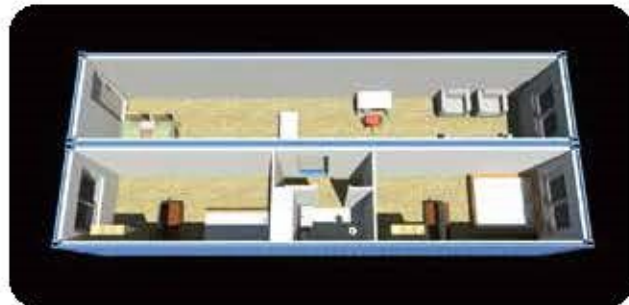
8 x 40ft Business unit-1 Model:MC-4004



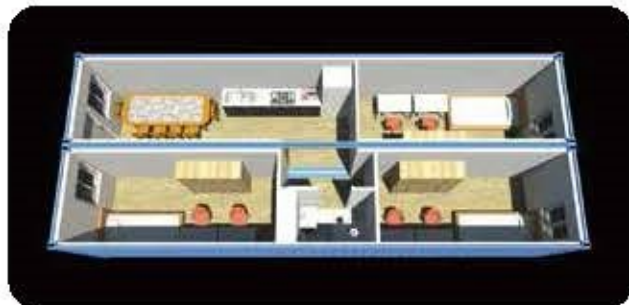
8 x 40ft Professor unit Model:MC-4005



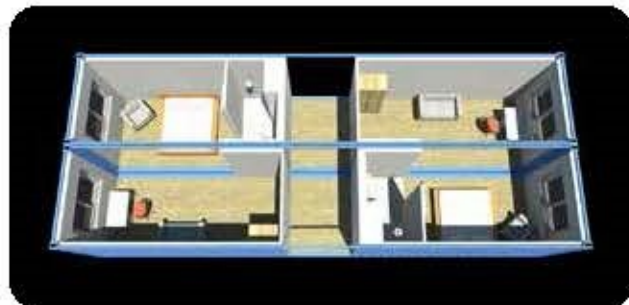
8 x 40ft Junior unit Model:MC-4006



2 x 8 x 40ft Master unit-1 Model:MC-4007



2 x 8 x 40ft Master unit-2 Model:MC-4008

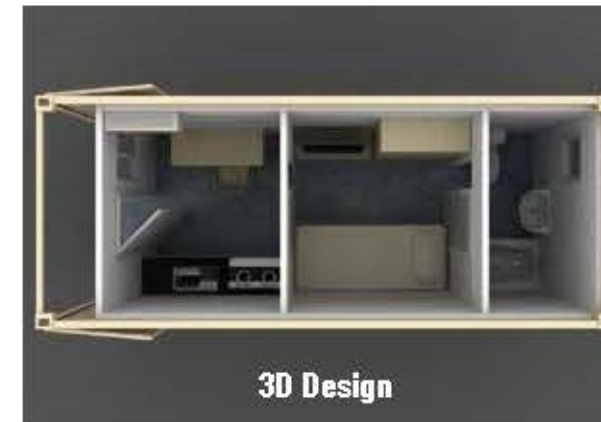


2 x 8 x 40ft Queen unit Model:MC-4009

Project & Layout



United Nations Project
Application: Accommodation
Project Profile: 6058mm*2438mm*30 units total





Location: Australia
 Application: Residence
 Project Profile: 2 floor building, 12192mm*3657mm*4 units total



3D Design



Location: Australia
 Application: Accommodation
 Project Profile: 12192mm*3400mm*4 units+6058mm*3400mm*1 unit total

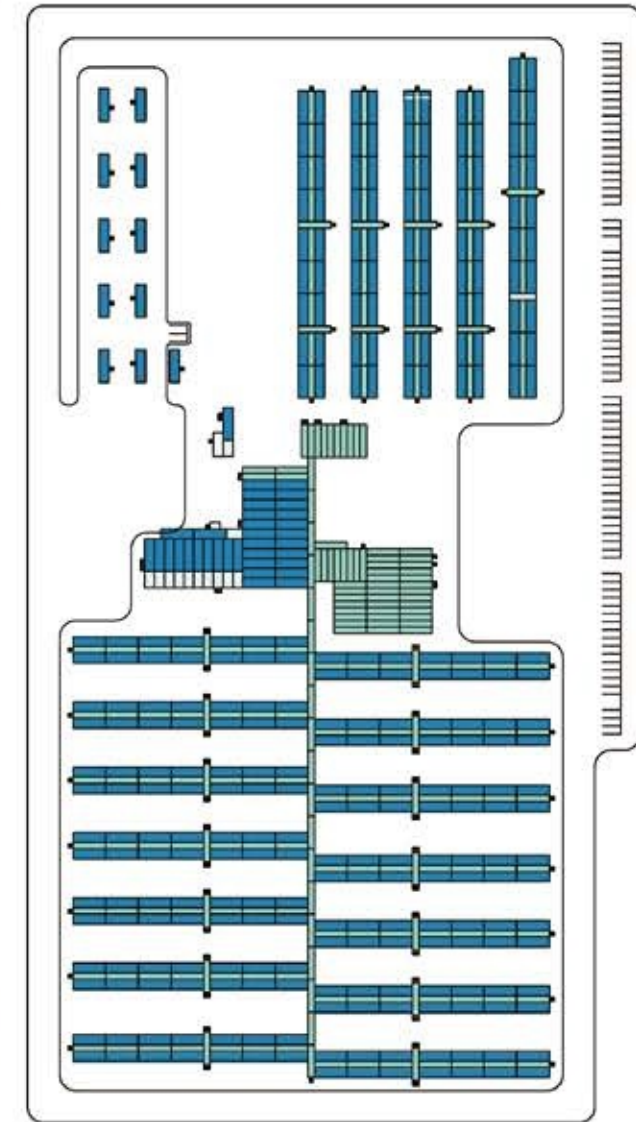




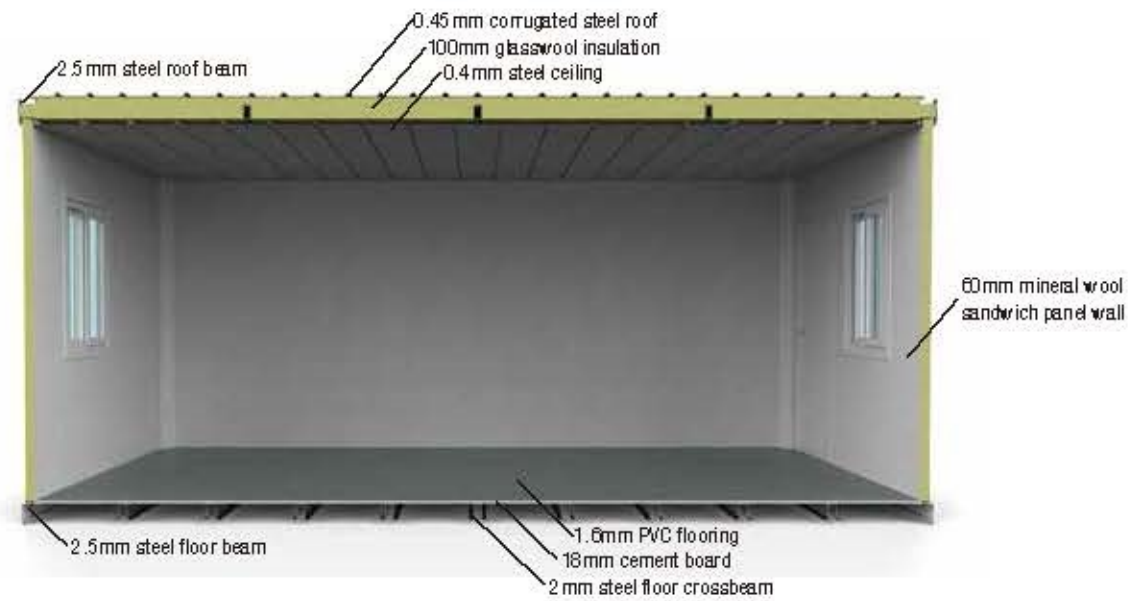
Location: Canada
 Application: Accommodation
 Project Profile: 18268mm*3657mm unit



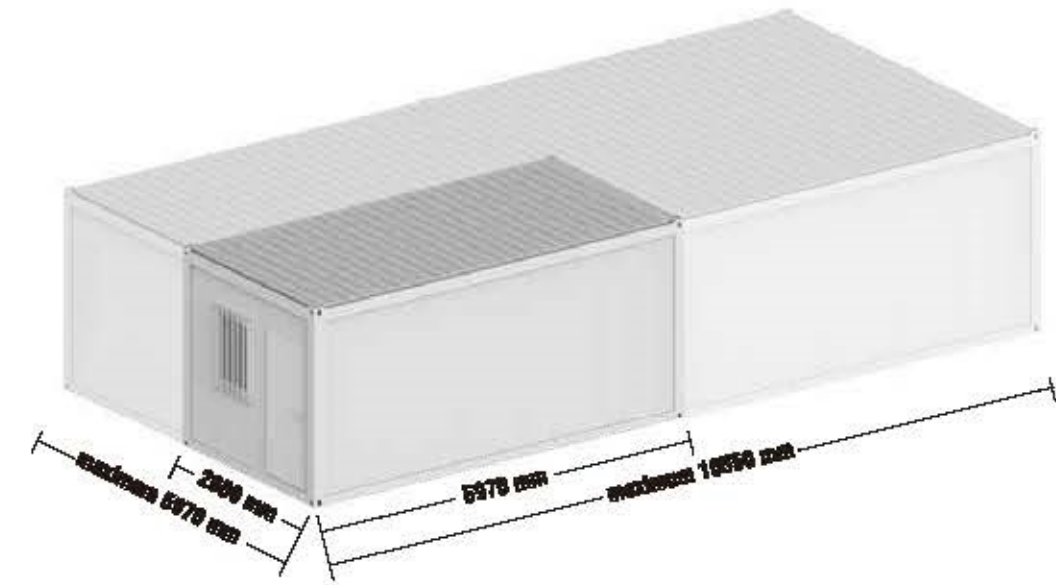
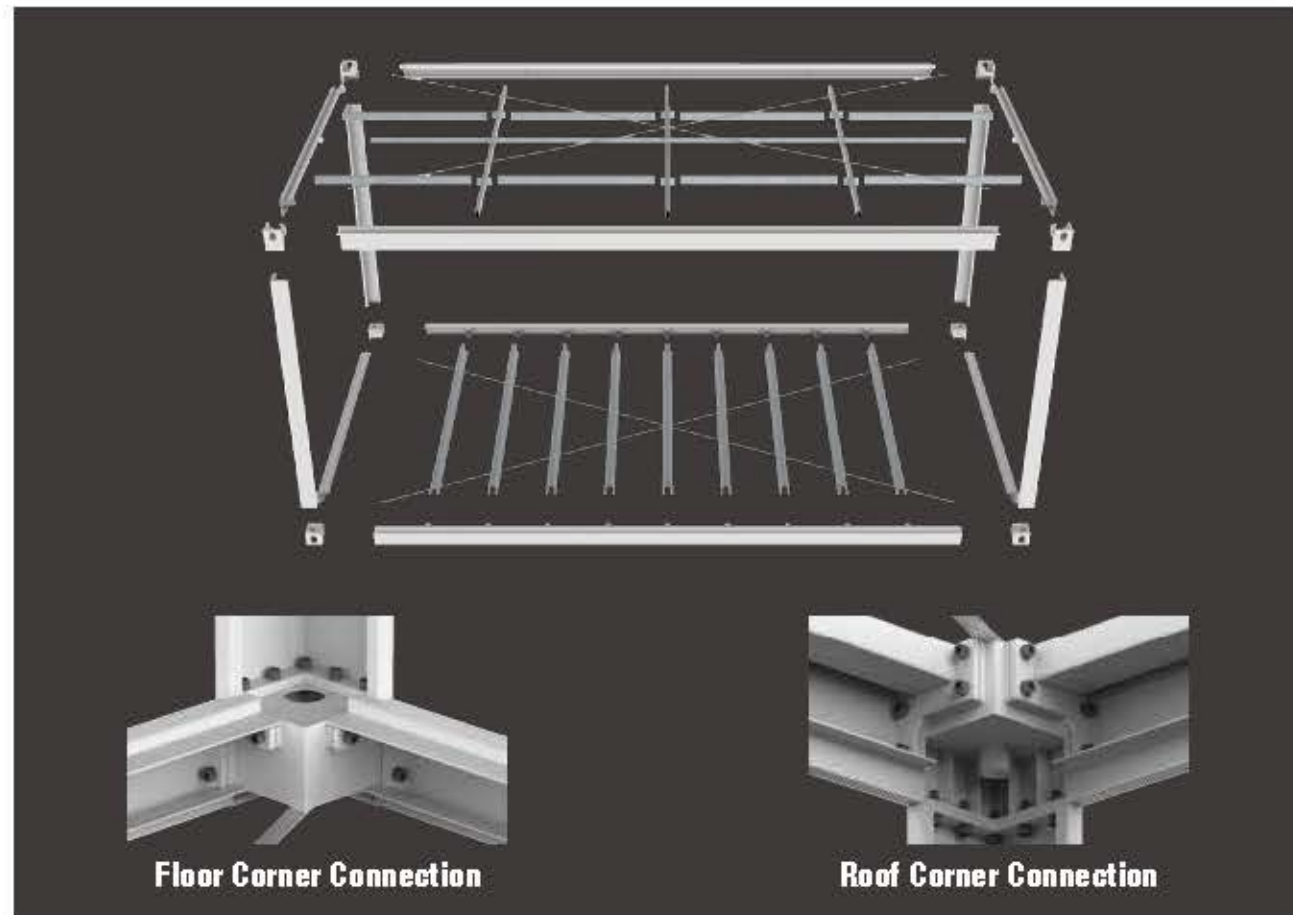
Location: Northern Ontario, Canada
 Application: Workers Camp
 Project Profile: 591 units, 21 300 sq.m. total, designed to tolerate -40°C



SITE BOLTED MODULAR



Our new product, site bolted modular is designed on the basis of flat pack container. All the parts of site bolted modular are transported separately and will be assembled on site. We use the same beams of flat pack container for the site bolted modular to make sure it is strong enough.



Easy Installation

The site bolted modular is combined with several parts. All of them are connected with bolts. No welding and drilling is required during the frame assembly. 2 skilled worker can complete 1 modular in 3 hours.



Flexible Dimension

Since the site bolted modular can be split into components during the transportation, there is no limit on the dimension. The maximum dimension of the site bolted modular can reach 6m width and 11m length. While the flat pack container can only be 2.4m width when be loaded in 40HC.



Economical Transportation

The site bolted modular can be split into parts to load into the shipping container, which saves more space. One 40HC shipping container can load 12 units of 3x6m site bolted moduls and One 20GP shipping container can load 6 units of 3x6m site bolted moduls, twice the quantity of the flatpack containers. That means a large saving in freight.





SMART HOME



Smart home is a new generation of building systems. It's a completely customized product, both in the design and materials. The frame of the smart home is steel structure and the wall system is light steel. It looks as same as an ordinary residence. But it's more environmentally friendly and economical. All the materials are provided by the factory and only need to be assembled on site.



Assembly



Wall System



Customized Layout

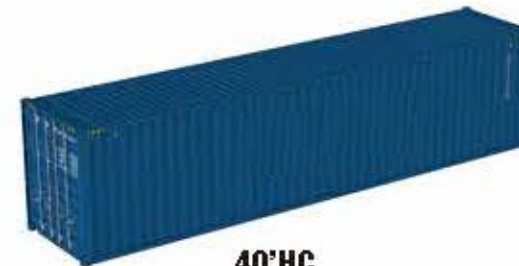


Interior Decoration

ISO SHIPPING CONTAINER



production line for ISO shipping container. Our main products include 20'GP, 20'HC, 40'GP, 40'HC ISO shipping containers. In addition, we can also customize special containers which maximum external dimensions is 4200mm (Width) x 18000mm (Length) x 2896mm (Height). We have 100-120 units max output per day, which can ensure the delivery in time for mass production.



40'HC



20'HC



40'GP



20'GP