

# Watermakers

MT-50T/24h



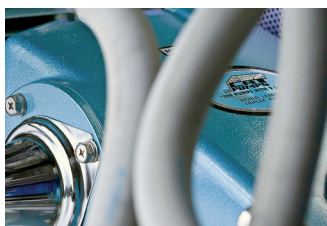
Watermaker produces drinking water from sea water based upon the reverse osmosis membrane technique. The capacity is 50m<sup>3</sup>/24h from seawater (25° C).

The quality of the drinking water is continuously monitored by a salinity meter.

The design is ideal for simple service and maintenance.

## The unit is suitable for:

- Drilling platforms
- Offshore rigs and accommodation platforms
- Commercial vessels
- Military vessels
- Resorts, hotels and communities
- Golf courses



## Standard

- High pressure plunger pump
- Continues control of the outgoing water quality, via a salinity meter and a dumping valve
- Automatic flush after each stop, via a carbon cartridge filter (neutralizing the chlorine)
- Low pressure switch before the high pressure pump
- Feed water particle filter (5 micron)
- Feed water pressure gauge
- Safety valves
- Flow meter for production flow
- All electrical equipment minimum IP54
- Low pressure switch on the suction side of the high pressure pump
- Level switch in water tank can be connected for start and stop

## Optional Equipment

- CIP cleaning tank
- Remote control
- Re-hardening filter in stainless steel, to increase pH
- UV sterilizer
- Dosing equipment for chlorine, anti-scalant or chlorine removal
- Prefiltration sand filters
- Spare parts and consumables package
- Portable conductivity meter and pH meter



Sandfilter SA-800  
Thermoplastic coated vessel  
Automatic back flushing



Re-hardening filter N-80 RO  
Stainless steel, AISI 316L

MT-50T			
Capacity (m <sup>3</sup> /24h)	50	Width (mm)	1680
Installed power HP (kW) (50 / 60Hz)	15.0 / 13.2	Depth (mm)	1000
Installed power feed pump (kW) (50 / 60Hz)	1.5 / 1.5	Height (mm)	1120
Raw water flow (m <sup>3</sup> /h)	5.2	Weight dry (kg)	645
Membranes (8")	3 pcs	Weight (operational) wet (kg)	730

The capacity is calculated with a sea water temperature at 25°C and a TDS at 35 500ppm.  
The treated and produced water flow will decrease with lower temperature.

### Enwa Water Technology

Importgatan 21  
SE-422 46 Hisings Backa, Sweden  
Phone: + 46 31 742 92 50  
E-mail: mar-off@enwa.com

Nordre Kullerød 9 Postboks 1241  
NO-3205 Sandefjord, Norway  
Phone: + 47 33 48 80 60

Engine Block, The Sidings, Merrylees Industrial Estate  
Leicestershire, LE9 9FE, United Kingdom  
Phone: + 44 1530 830 354