



House models  
2-bedroom

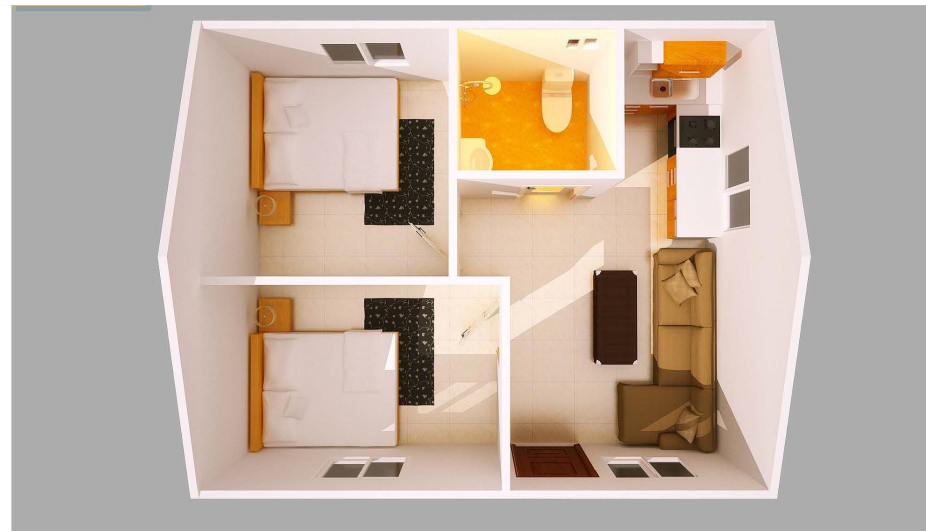
The cost of the house includes the following items:

1. House main structure;
2. Windows & doors;
3. Decoration;
4. Bathroom and Kitchen facilities.

The cost is calculated based on the elevation of 2800mm, and 96mm wall panels.

# 2-Bedroom, 36Sqm

Total cost:US\$14600



# 2-Bedroom, 43.7Sqm Total cost:US\$15547



# 2-bedroom, 52Sqm Total cost:US\$19420.00



**2-bedroom , 100Sqm**

Total cost:US\$35500.00

