

**MATERIAL FOR POUCH:**  
 CORDURA 1000 DENIER FABRIC ABRASION & UV RESISTANT  
 COLOR BLACK

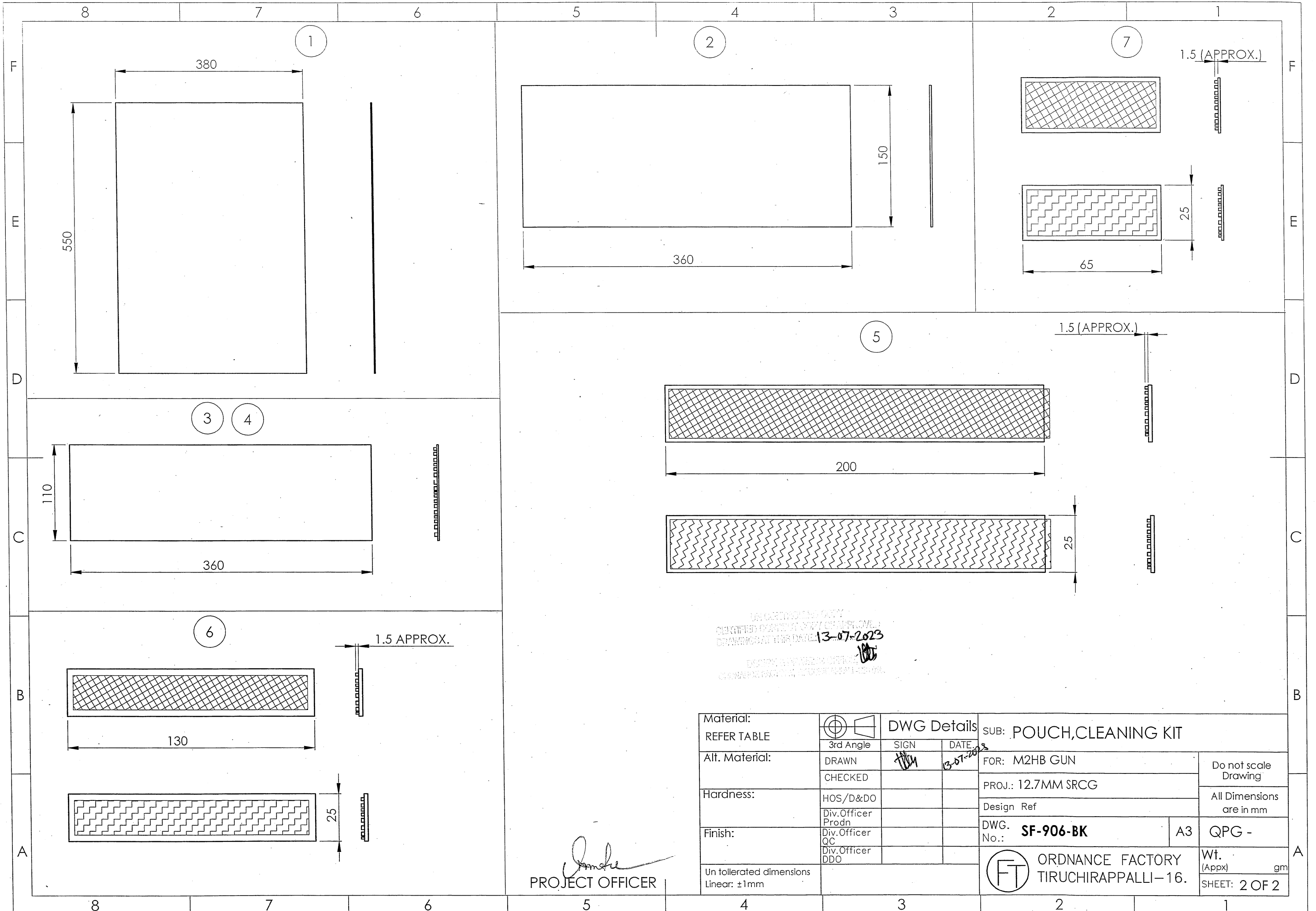
**NOTE:**  
 1. THE DRG. SUPPLIED IS FOR GUIDANCE ONLY.  
 2. SAMPLE SHOULD BE SUPPLIED & GET APPROVAL BEFORE BULK SUPPLY.  
 3. THE SUPPLIER SHOULD SEE THE SAMPLE i.e. ITEMS BEFORE MANUFACTURING AND STITCH SUITABLY TO ACCOMDATE  
 a. SEAMS AS PER INDIAN STANDARD  
 b. USE SUPER DURABLE NYLON THREADS  
 c. SQUARE NETTED CLOTH TO BE USED AS PER SAMPLE  
**STITCH:**  
 STITCHES AS PER IS:4229 23 STICHES PER 100mm LENGTH

UNAPPROVED COPY  
 CERTIFIED COPY OF THIS DRAWING IS  
 VALID ONLY AT THIS DATE: 13-07-2023  
 DESIGN & DRAWING OFFICE,  
 ORDNANCE FACTORY, TIRUCHIRAPPALLI-16.

*Imjee*  
 PROJECT OFFICER

PART NO.	PART DESCRIPTION	QTY.	MATERIAL	REMARKS
1	POUCH	1	CORDURA 1000 DENIER FABRIC ABRASION	---
2	BOTTOM POCKET	1	NYLON FABRIC	---
3	MIDDLE POCKETS	2		---
4	TOP POCKETS	2		---
5	VELCRO FOR BOTTOM POCKET	1	VELCRO	---
6	VELCRO FOR MIDDLE & TOP POCKET	3	VELCRO	---
7	VELCRO FOR POUCH	3	VELCRO	---

Material: REFER TABLE	3rd Angle DRAWN CHECKED	DWG Details		SUB: <b>POUCH, CLEANING KIT</b>	
Alt. Material:		HOS/D&DO Div. Officer Prodn	SIGN	DATE	FOR: M2HB GUN
Hardness:	Div. Officer QC		13-07-2023	PROJ.: SRCG	
Finish:	Div. Officer DDO			Design Ref	
Un tolerated dimensions Linear: ±1mm	DWG. No.: <b>SF-906-BK</b>		A3	QPG -	
ORDNANCE FACTORY TIRUCHIRAPPALLI-16.				Wt. (Appx) gm SHEET: 1 OF 2	



UNCLASSIFIED  
 CONTROLLED BY OR UNDER  
 DRAWING CONTROL DATE: 13-07-2023  
 CONTROLLED BY OR UNDER  
 CONTROL DATE: 13-07-2023

*Janku*  
 PROJECT OFFICER

Material: REFER TABLE	 3rd Angle	DWG Details		SUB: POUCH,CLEANING KIT		
Alt. Material:		DRAWN	SIGN	DATE	FOR: M2HB GUN	Do not scale Drawing
Hardness:	HOS/D&DO			PROJ.: 12.7MM SRCG	All Dimensions are in mm	
Finish:	Div.Officer QC			DWG. No.: SF-906-BK		A3 QPG -
Un tollerated dimensions Linear: ±1mm				ORDNANCE FACTORY TIRUCHIRAPPALLI-16.		Wt. (Appx) gm
						SHEET: 2 OF 2