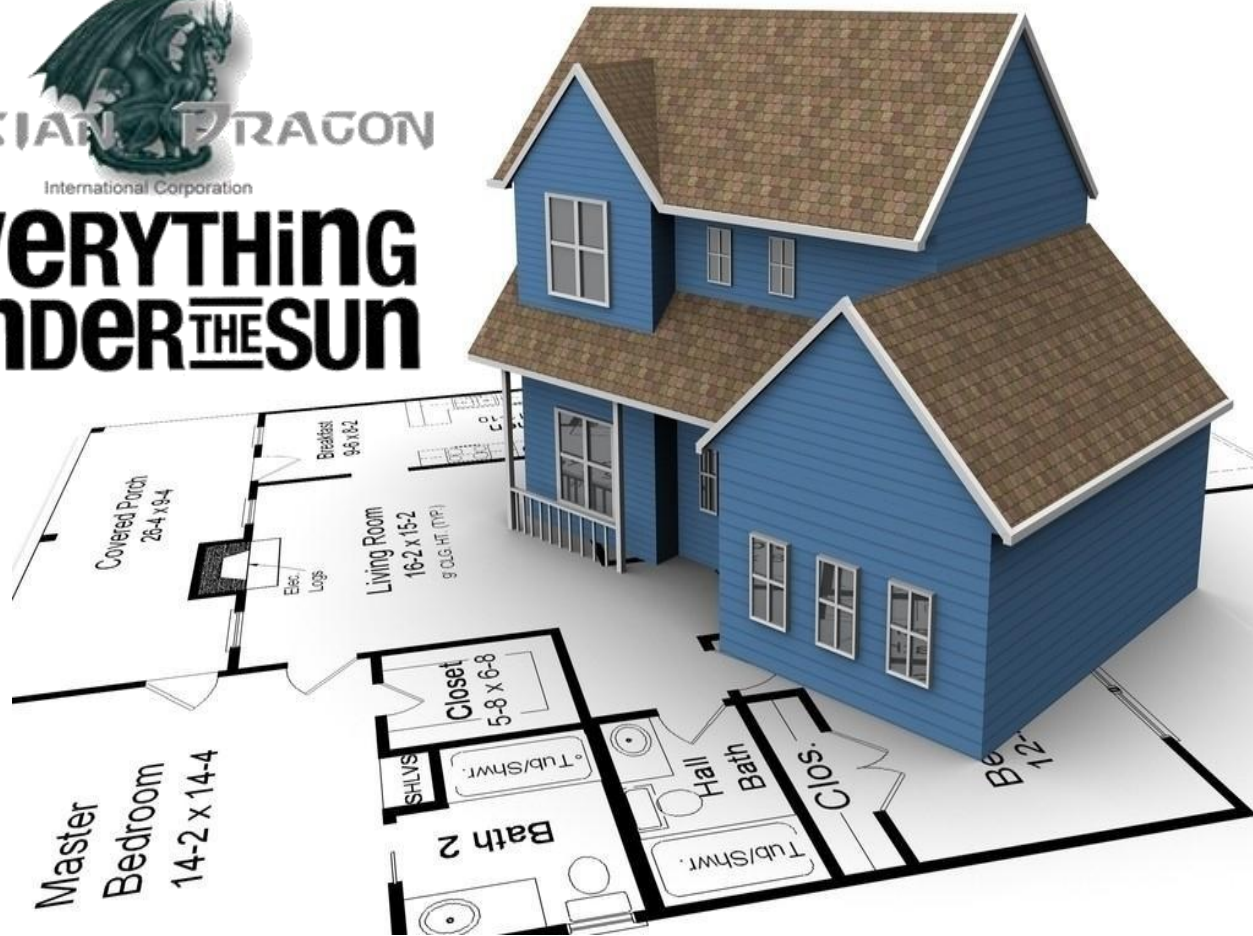




**EVERYTHING  
UNDER THE SUN**



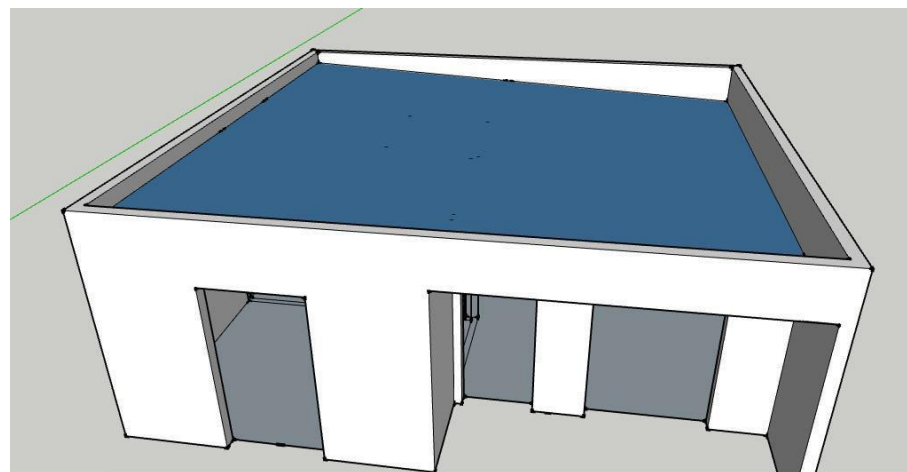
**ADI PREFABRICATED BUILDING**

Section	Housing Materials	Requirement& Size
<b>Part 1:</b> House frame	Steel structure	Specialized steel frame work with Panel
<b>Part 2:</b> Wall Panel	EPS cement sandwich panel	Exterior wall: 2270(L)x610(W)x100/120/ 150/180/200(T)mm
	EPS cement sandwich panel	Interior wall: 2270(L) x 610(W) x 50/60/75/ 90/ 100(T)mm
<b>Part 3:</b> Roof	<b>Option1:</b> Asphalt Shingle + Waterproofing sheet + Daquan panel	Size: 1000 x 333mm Color: Many color options.
	<b>Option2:</b> Colorful stone metal roofing tile + double bubble	Size: Different size by different shape Color: Many color options
	<b>Option3:</b> ASA Synthetic Resin Roofing tile + double bubble	Size: 5668x1040x3mm Color: Many color options
	<b>Option4:</b> Galvanized colorful steel EPS sandwich panel	Size: 5800 x 980 x 50/ 75/ 100/ 120mm Color: Many color options
	Roof steel truss, Purlin and rain gutter	Roof truss: 40x60x3mm, Purlin: C steel 120x50x20x2.5mm Rain gutter: 5k, 6k, 7k Aluminum gutter
<b>Part 4:</b> Ceiling	Ceiling for living room, dining room, bedroom	Gypsum board 2440x1200x9mm
	Ceiling for Kitchen and bathroom	Aluminum gusset plate ceiling 300x300mm
<b>Part 5:</b> Flooring	Flooring for living room, dining room, bedroom	600x600mm ceramic tiles or Laminated wooden floor
	Flooring for Kitchen and bathroom	300x300mm ceramic tiles
	Wall tile for Kitchen and bathroom	450x300mm ceramic tiles
<b>Part 6:</b> Doors& windows	Entrance door: Security steel	with lock and other accessories
	Interior door: High density	
	Bathroom door: Aluminum alloy	
	PVC or Aluminum alloy window	
<b>Part 7:</b> Bathroom	Toilet	Popular western size toilet (2 in 1)
	Shower	with floor drain included
	Wash basin	With Faucet and accessories
<b>Part 8:</b> Kitchen	Kitchen cabinet	Customized
	Wash basin	With Faucet and accessories
Part 9:Wall decoration	External wall	Painting or stone decoration
	Internal wall	Painting or wall paper
Part 10:	Electric and water system	High quality electric and water system product



# ADIDQ101

*55M2 = 2 bedrooms + 1 bathroom  
+ 1 kitchen + 1 living room*

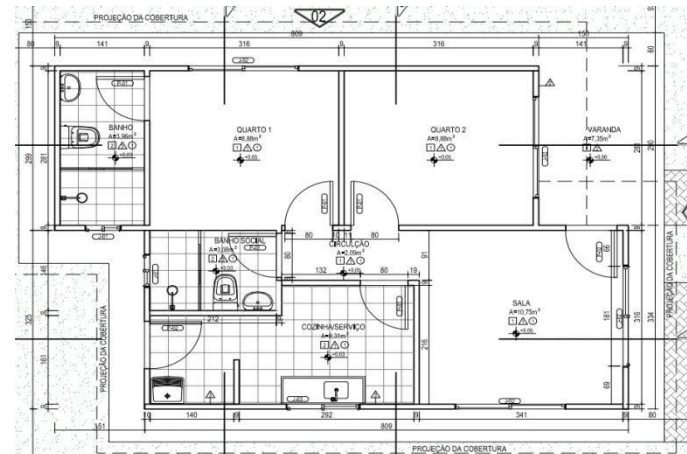


50m<sup>2</sup>



# ADIDQ102

50M<sup>2</sup> = 2 bedrooms + 2 bathrooms  
+ 1 kitchen + 1 living room

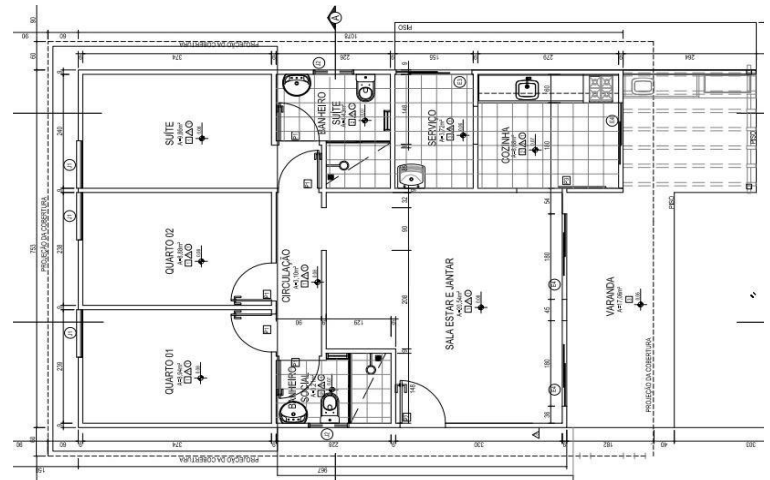


75m<sup>2</sup>

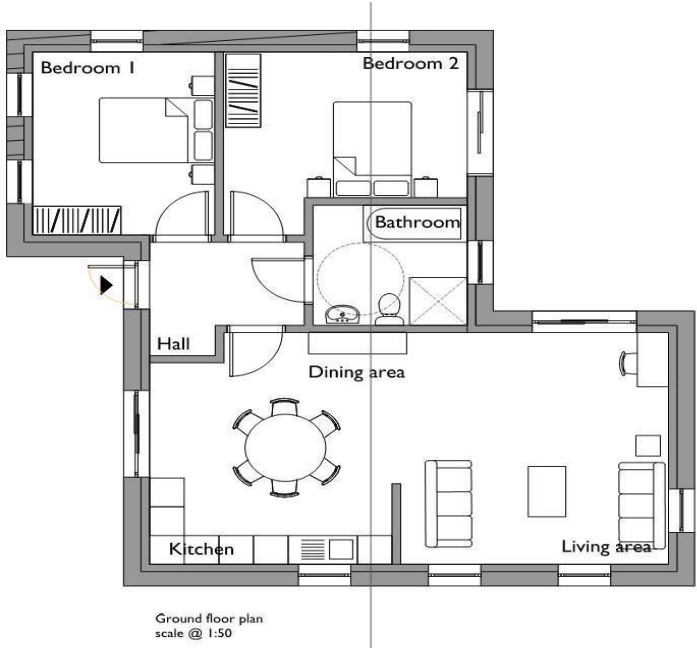


# ADIDQ103

75M<sup>2</sup> = 3 bedrooms + 2 bathrooms  
+ 1 kitchen + 1 living room



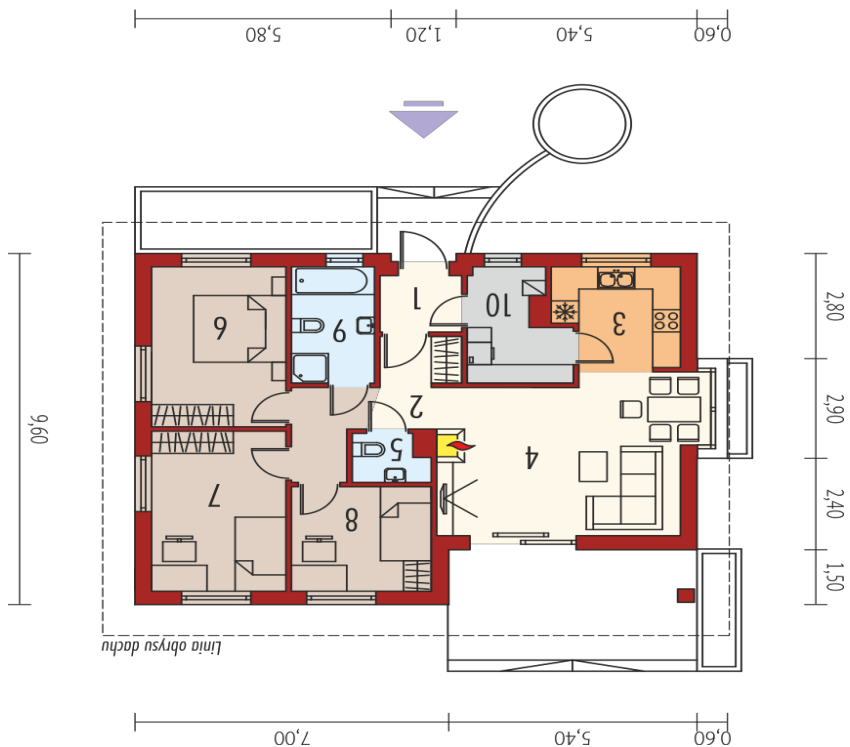
105m<sup>2</sup>



# ADIDQ104

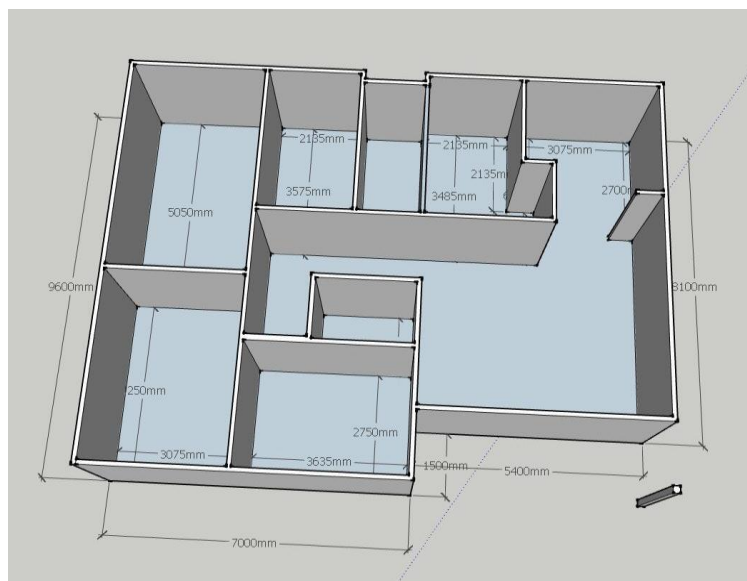
*105M<sup>2</sup> = 2 bedrooms + 1 bathroom  
+ 1 kitchen + 1 living room*





# ADIDQ105

**120M<sup>2</sup> = 3 bedrooms + 2 bathrooms  
+ 1 kitchen + 1 living room + 1 dinner room**

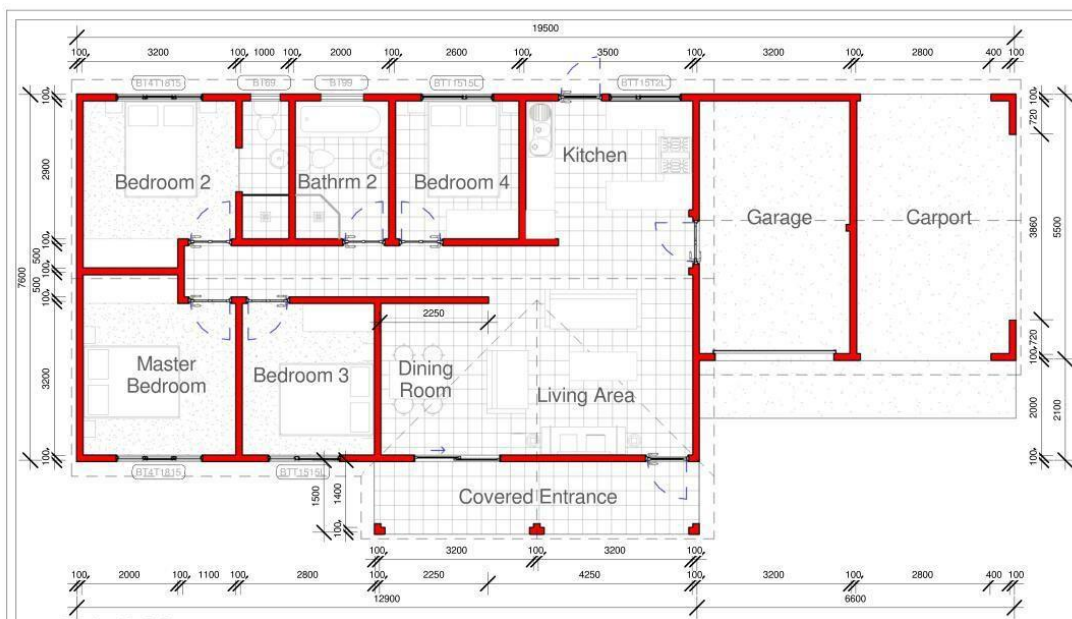


128m<sup>2</sup>



# ADIDQ106

128M<sup>2</sup> = 4 bedrooms + 2 bathrooms  
+ 1 kitchen + 1 living room



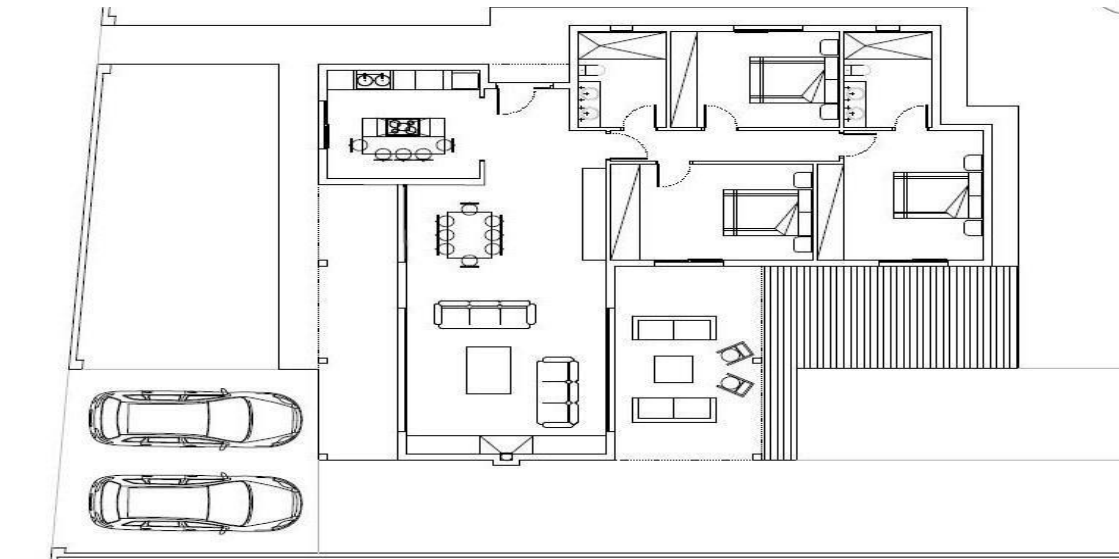


133m<sup>2</sup>



# ADIDQ107

*133M2 = 3 bedrooms + 2 bathrooms  
+ 1 kitchen + 1 living room*

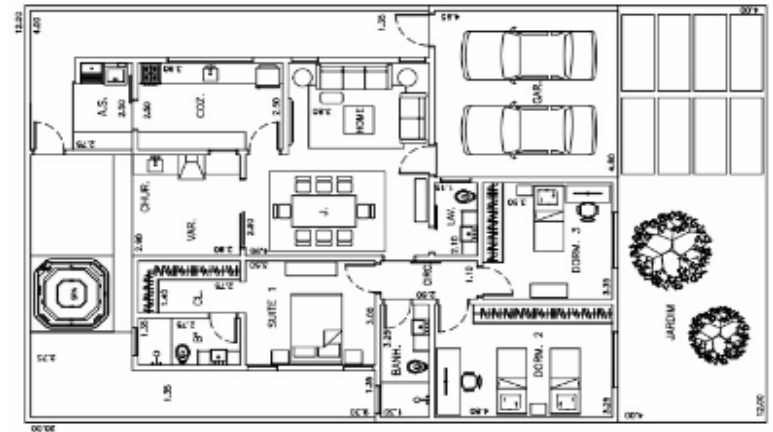


145m<sup>2</sup>



# ADIDQ108

*145M<sup>2</sup> = 3 bedrooms + 2 bathrooms  
+ 1 kitchen + 1 living room + 1 washroom + 1 barbecue area*

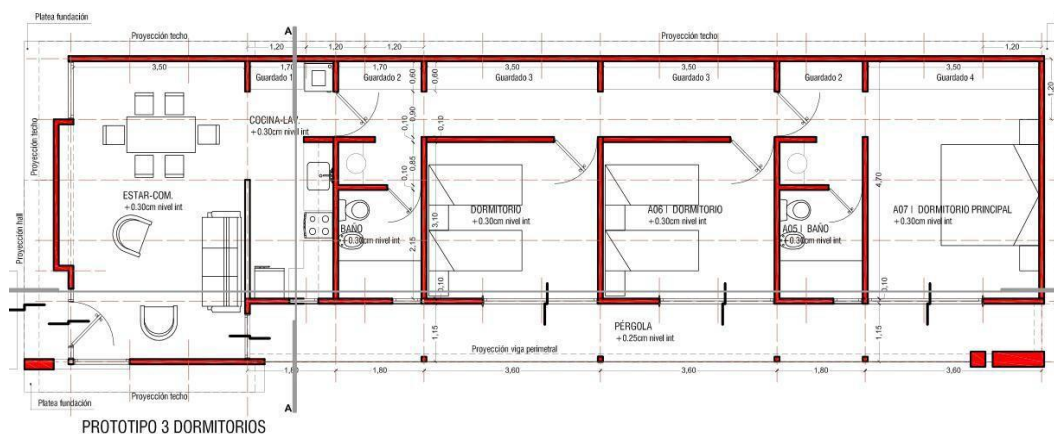


154m<sup>2</sup>

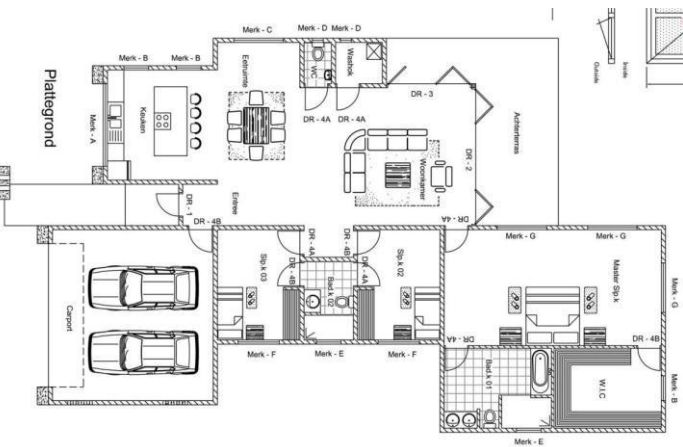


# ADIDQ109

154M<sup>2</sup> = 3 bedrooms + 2 bathrooms  
+ 1 kitchen + 1 living room



180m<sup>2</sup>



# ADIDQ110

180M<sup>2</sup> = 3 bedrooms + 2 bathrooms  
+ 1 kitchen + 1 livingroom

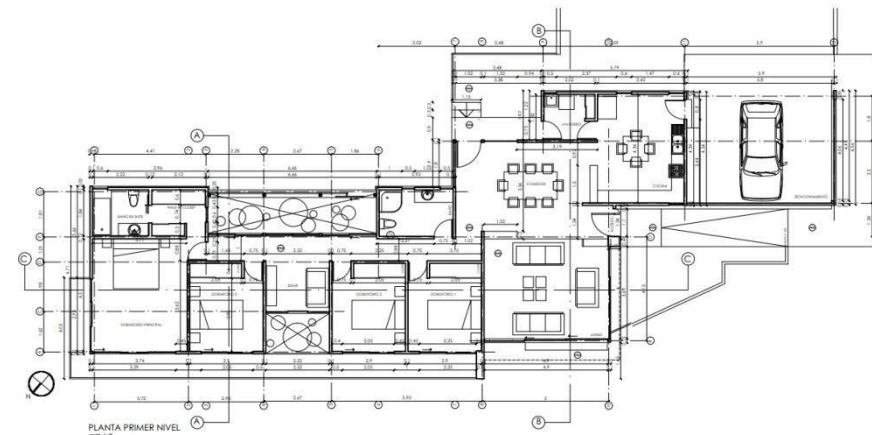


186.5m<sup>2</sup>

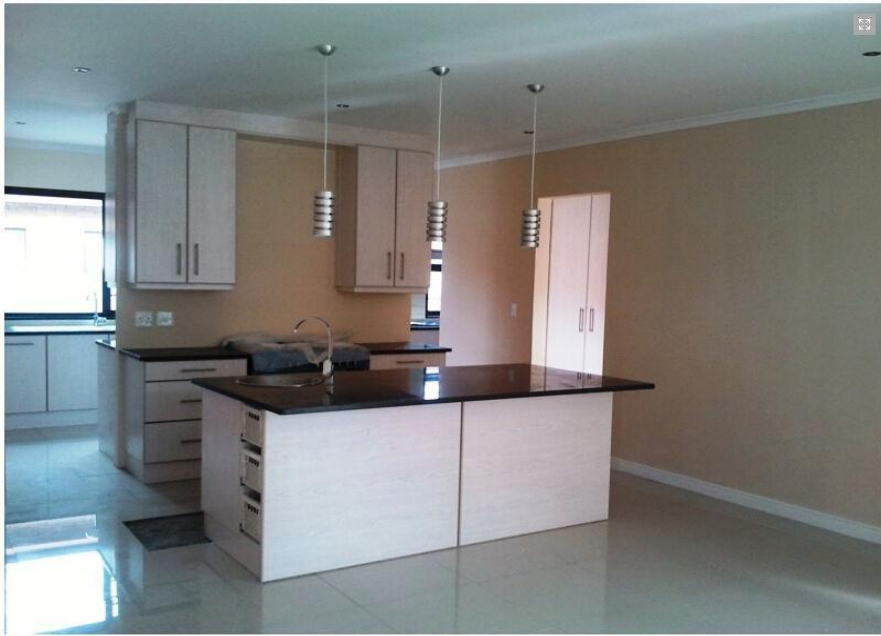


# ADIADIDQ111

*186.5M<sup>2</sup> = 4 bedrooms + 3 bathrooms  
+ 1 kitchen + 1 living room*

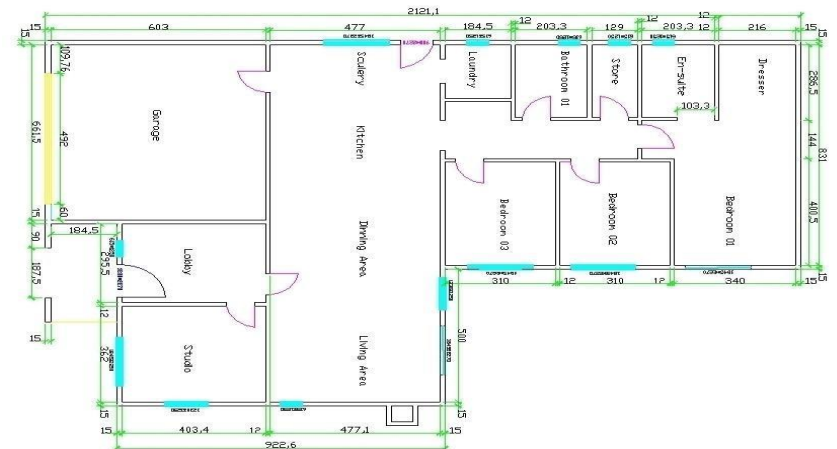


250m<sup>2</sup>



# ADIDQ112

250M<sup>2</sup> = 3 bedrooms + 2 bathrooms  
+ 1 kitchen + 1 living room + 1 garage + 1 studio  
+ 1 lobby

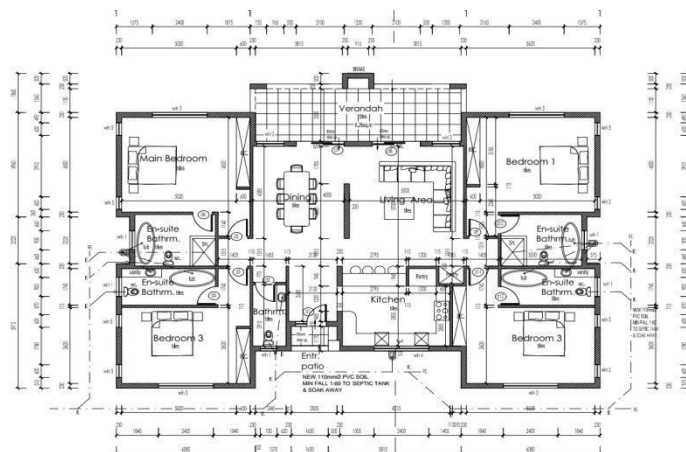


316m2



# ADIDQ113

316M2 = 4 bedrooms + 5 bathrooms  
+ 1 kitchen + 1 living room + 1 dinner room

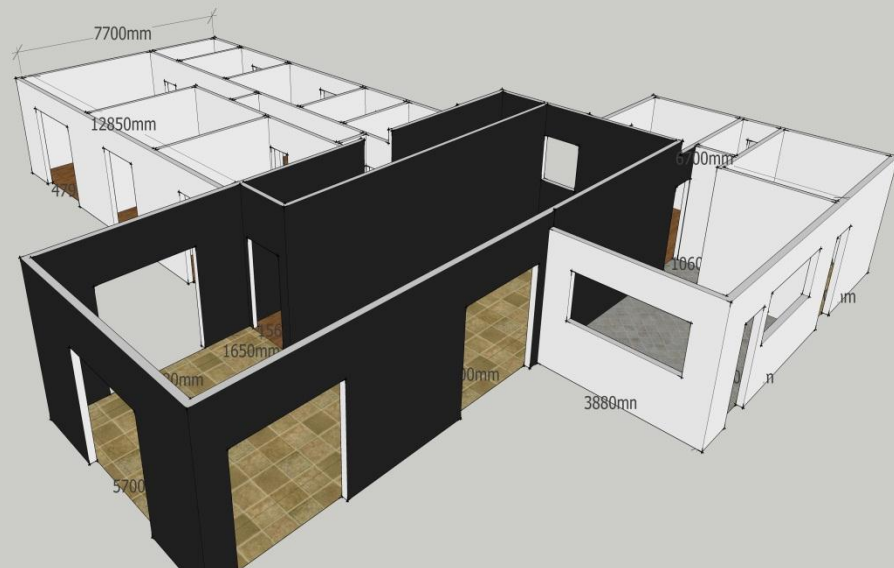


360m<sup>2</sup>



# ADIDQ114

360M<sup>2</sup> = 4 bedrooms + 5 bathrooms  
+ 1 kitchen + 1 living room + 1 dinner room



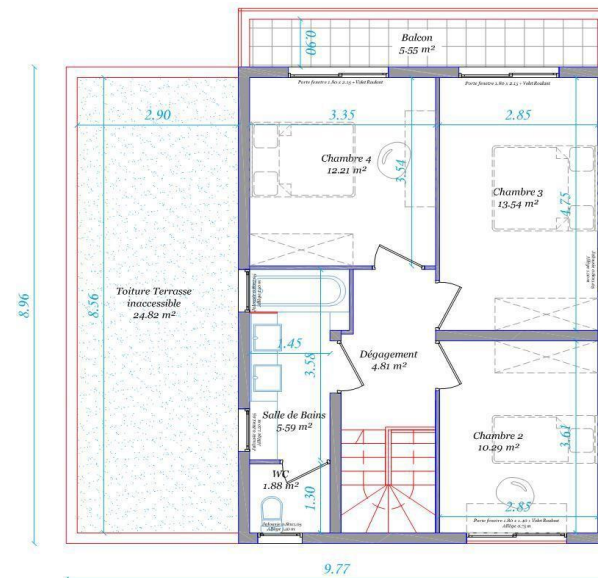
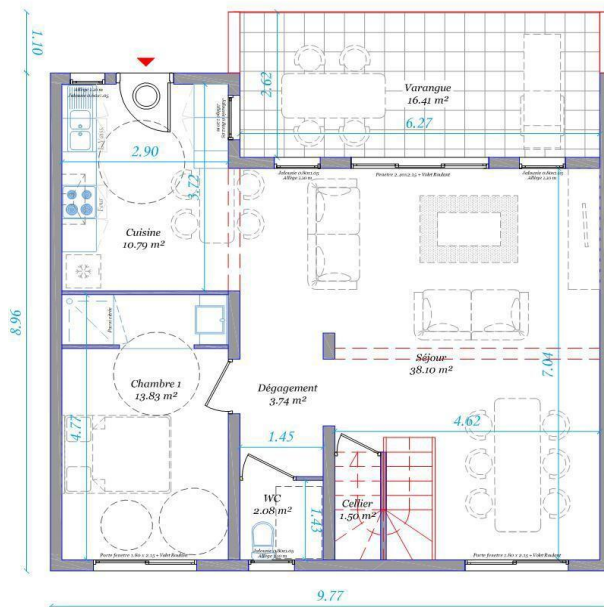


140m<sup>2</sup>



**ADIDQ202**

**130M<sup>2</sup> = 4bedrooms+3bathroom  
+1 living+1 dinning+1 kitchen**

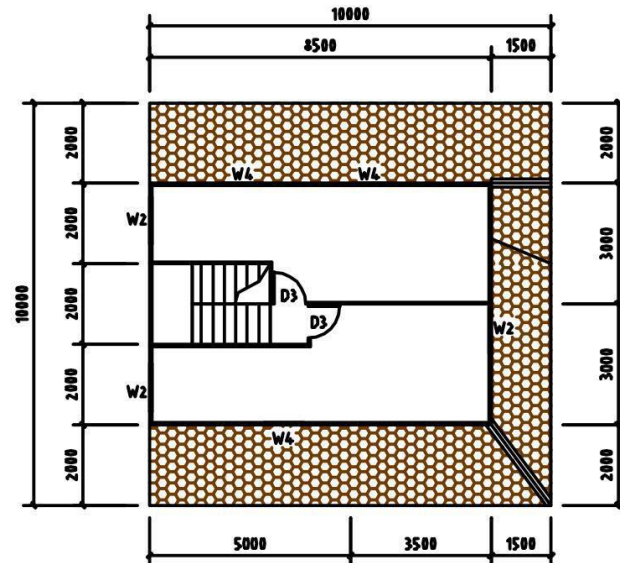
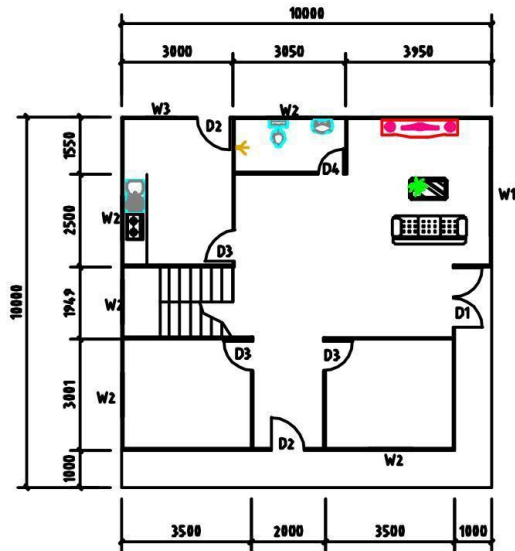


151m<sup>2</sup>



# ADIDQ203

*151M<sup>2</sup> = 4 bedrooms + 2 bathrooms  
+ 1 kitchen + 1 living room*



250m<sup>2</sup>

Villa House



# ADIDQ204

*250M<sup>2</sup> = 3 bedrooms + 3 bathrooms  
+ 1 kitchen + 1 living room*



FIRST FLOOR PLAN  
153.5SQM



SECOND FLOOR PLAN  
96.5SQM

254m<sup>2</sup>



**ADIDQ205**

*254M<sup>2</sup> = 4 bedrooms + 3 bathrooms  
+ 1 kitchen + 1 living room + 1  
dinner room*

