



true blue

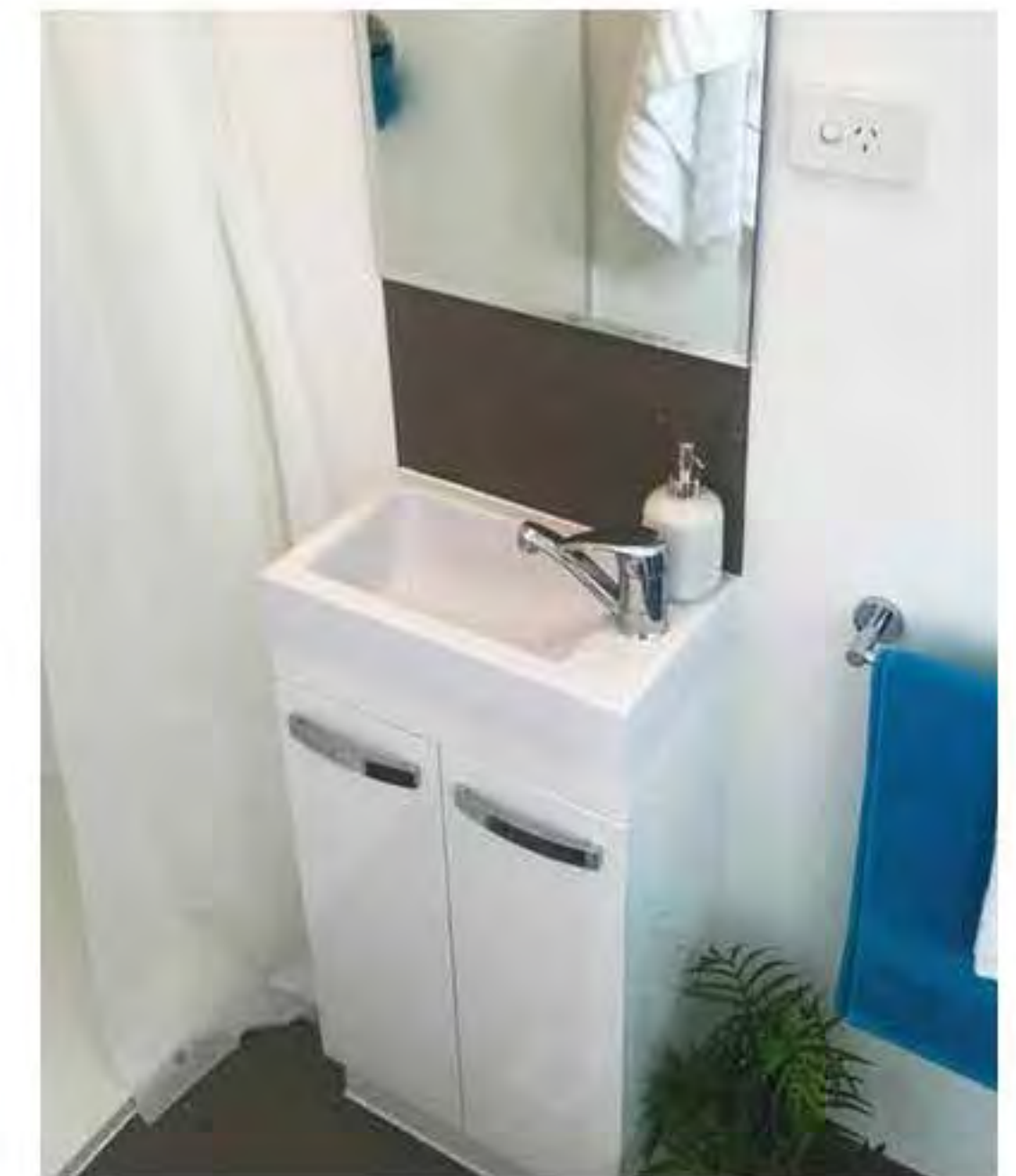
trueblue foldable house, with advanced folding technology, has completed about 80% of the pre-installation in the factory, folded and loaded into the container for transportation. After arriving at the site, expand the main structure of the house, simply install then can be put into use only after access to water and electricity, even if non-professional workers can be complete installed in a short time! It can save you a lot of time, energy and labor costs.

Foldable house



Whether it's a self-living or a VIP suite for an outdoor event, Foldable house are far and away the superior choice. Foldable house feature innovative folding technology that compresses the houses to a quarter of their expanded volume, enabling easy transportation and storage - for rapid deployment by land or by sea.

True blue



Comfortable life



True blue

Building materials

1. RHS floor structure based on engineer's design.
2. External & Internal wall Frame: AS1397 89mm*41mm*0.75mm G550, High tensile Steel wall frames, with full assembly details incorporating a simple coding system enabling easy construction, both side with 10mm fiber cement sheet
3. 89mm*41mm*0.75mm G550, High tensile Steel roof trusses & associated roof members, ready to assemble & attach to external walls with all fixings & detailed set-out plans.
4. Steel Batten 22 mm steel roof battens & batten 22mm steel ceiling battens
5. High tensile Corrugated colored roof sheets in 0.42mm thickness, gable flashings, ridge capping, valleys, barge capping & all fixings if applicable.
6. Wall cladding: 8mm fiber cement board as cladding
7. Interior lining: 8mm fiber cement board
8. Aluminum sliding windows & sliding doors including standard fly screens to Australian Standards and as per plan specifications in black color.
9. Glass wool R2.5 to main roof area unless otherwise specified.
10. Glass wool R3.5 breathable insulations to all exterior walls & gable ends if applicable

11. Entrance door- Aluminum sliding door
12. Bathroom door –alum. door with steel frame and weather seal
13. Internal doors- plywood interior door.
14. Flooring: 9mm Laminated flooring
15. Cornering: 90mm coved plasterboard cornice
16. Skirting –MDF skirting
17. Robe & Linen cupboard support – gypsum board cornering.
18. 9mm gypsum board ceiling
19. 8mm cfc soffit lining
20. All P/C items: toilet, shower and washbasin w/mirror
21. Power points as per plan
22. Joinery as per plan

The above materials are just for reference, different design, different materials. Please contact sales for more information.

Items not included

1. Site works – site clearing or cutting and rubbish removal.
2. Council fees and lodgments of plans.
3. External and internal stairs and balustrade.
4. All on site construction and labor.

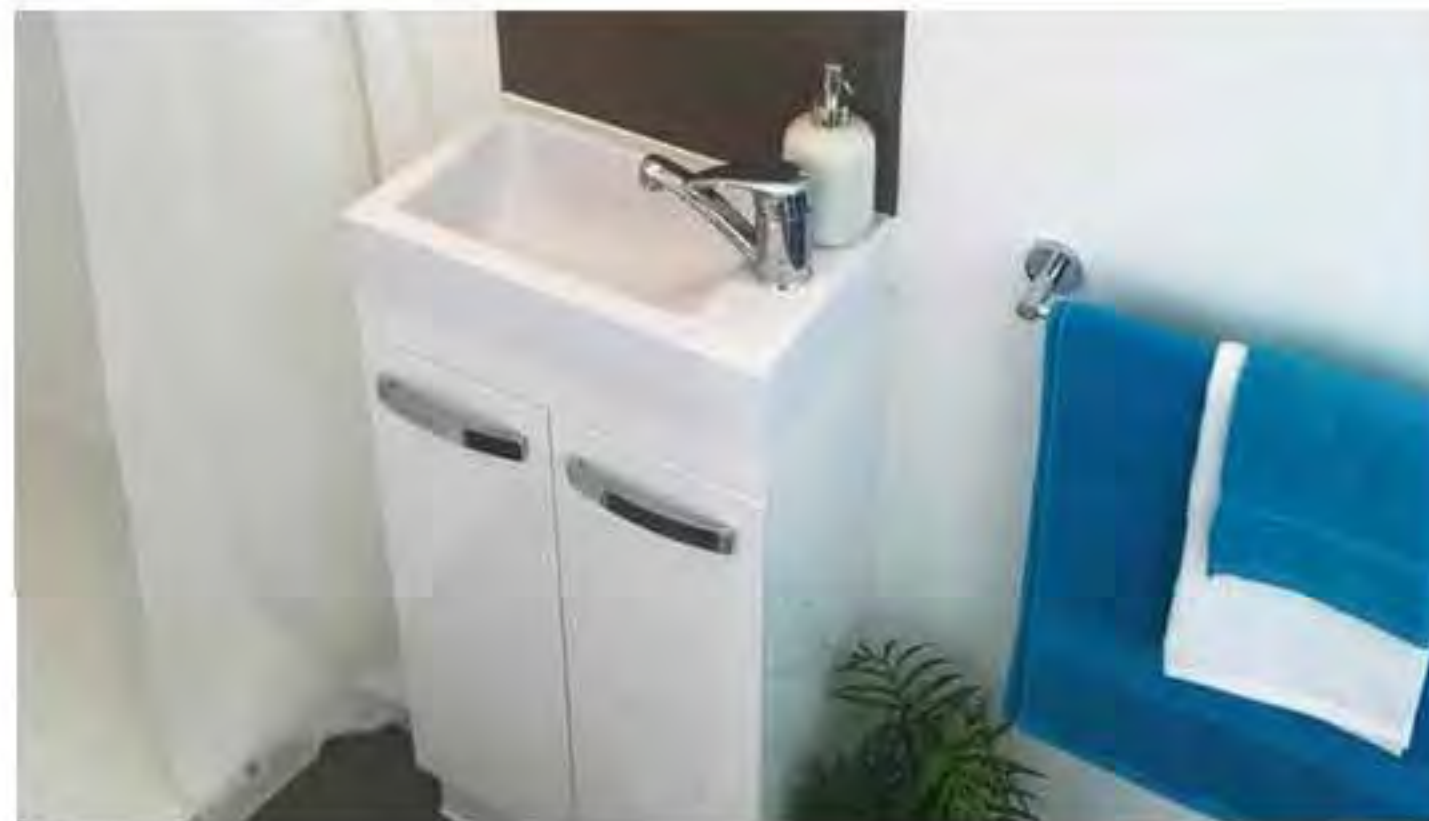
Work flow



Pack and load



Setup script





More design options

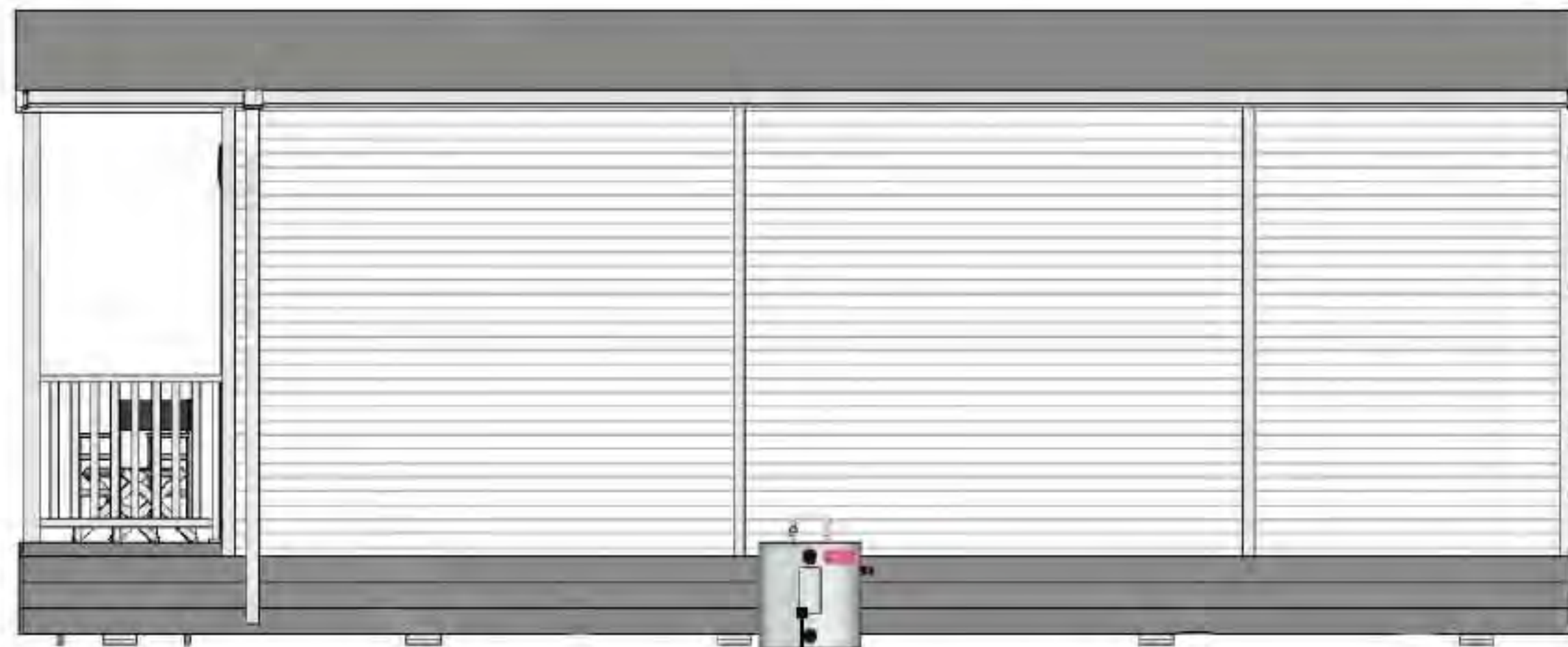


Foldable House 735



Elevation plan

True blue



Foldable House 735

Product description

Area :27.43m²

Size :7.95mx3.45m

Deck :1.2mx3.45m



FLOOR PLAN

True blue

Foldable House 735



True blue



Foldable House 806

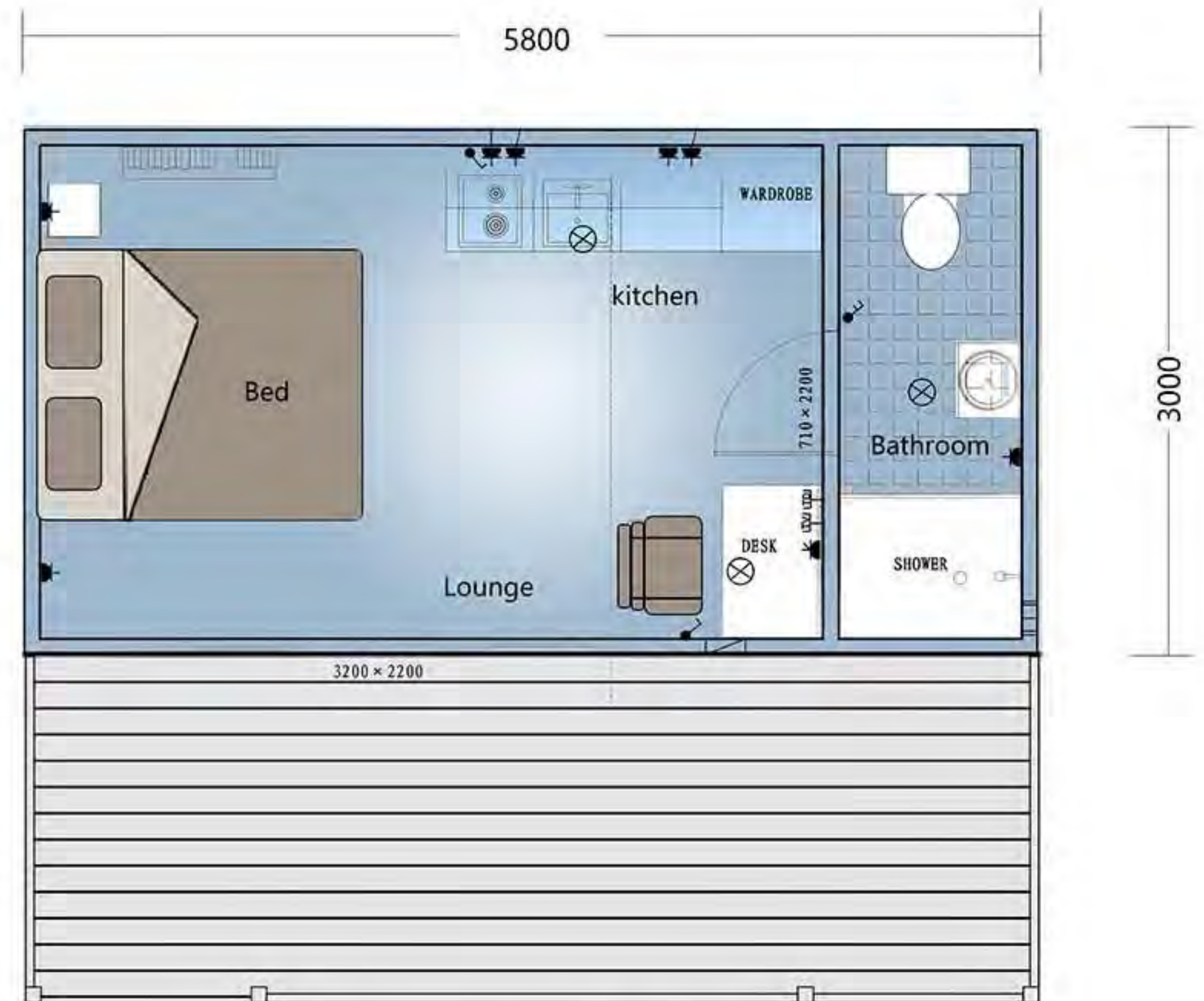




Foldable House 806

Product description

Area :17.4m ²
Size :5.8mx3m
Deck :5.8mx2m



FLOOR PLAN

Foldable House 806





Foldable House 929



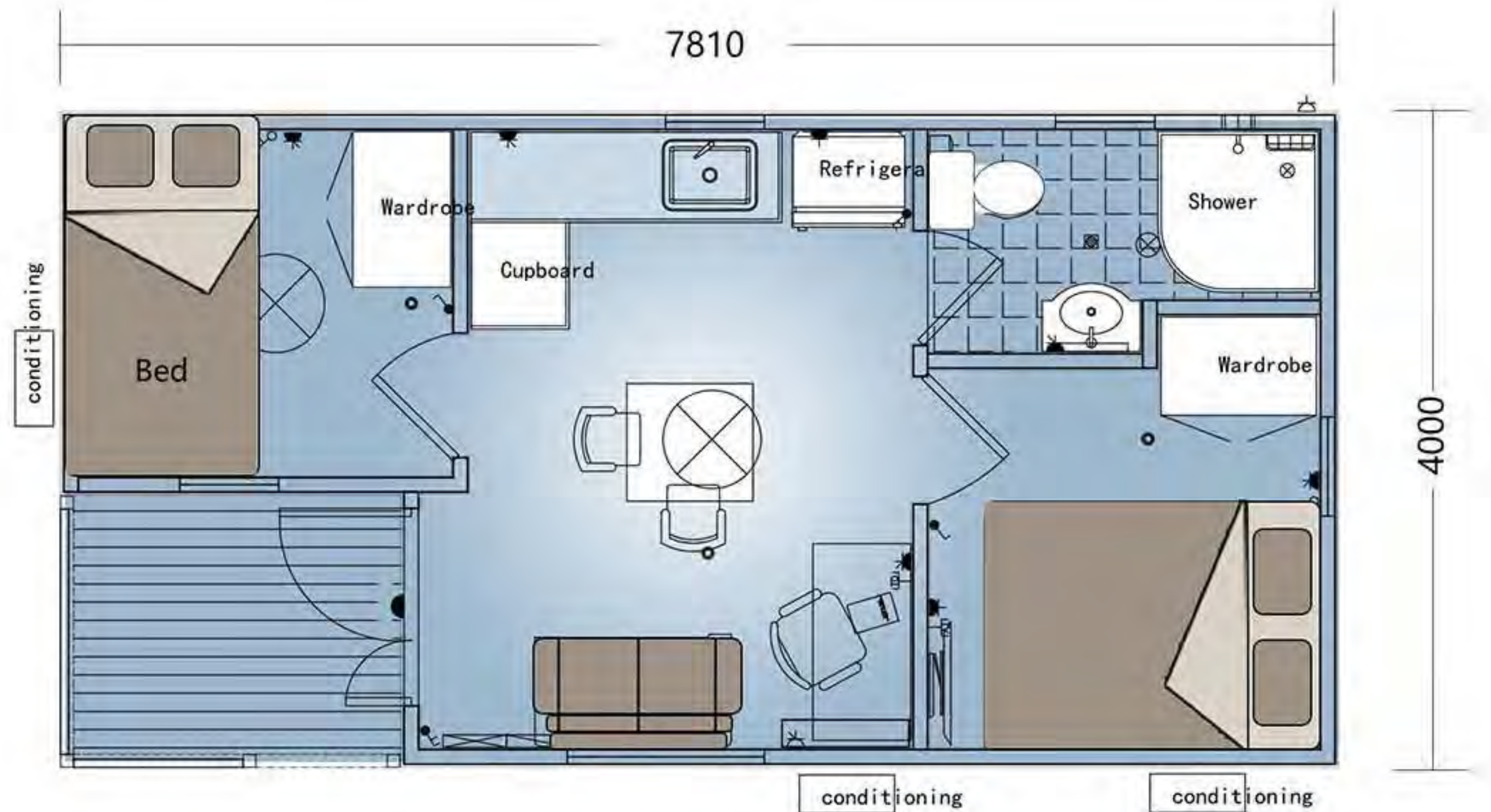
Foldable House 929

Product description

Area :31.24m²

Size :7.81mx4m

True blue

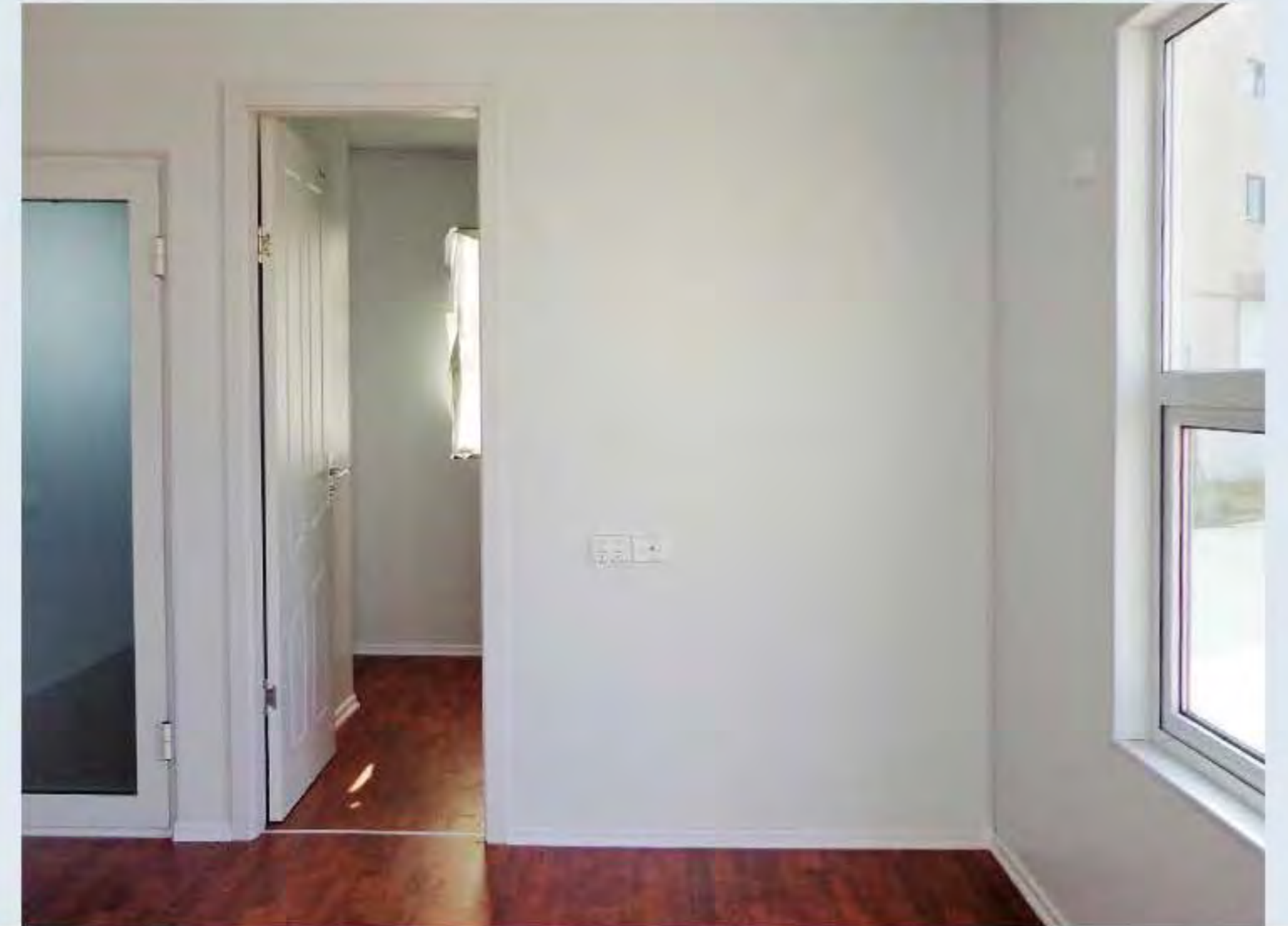
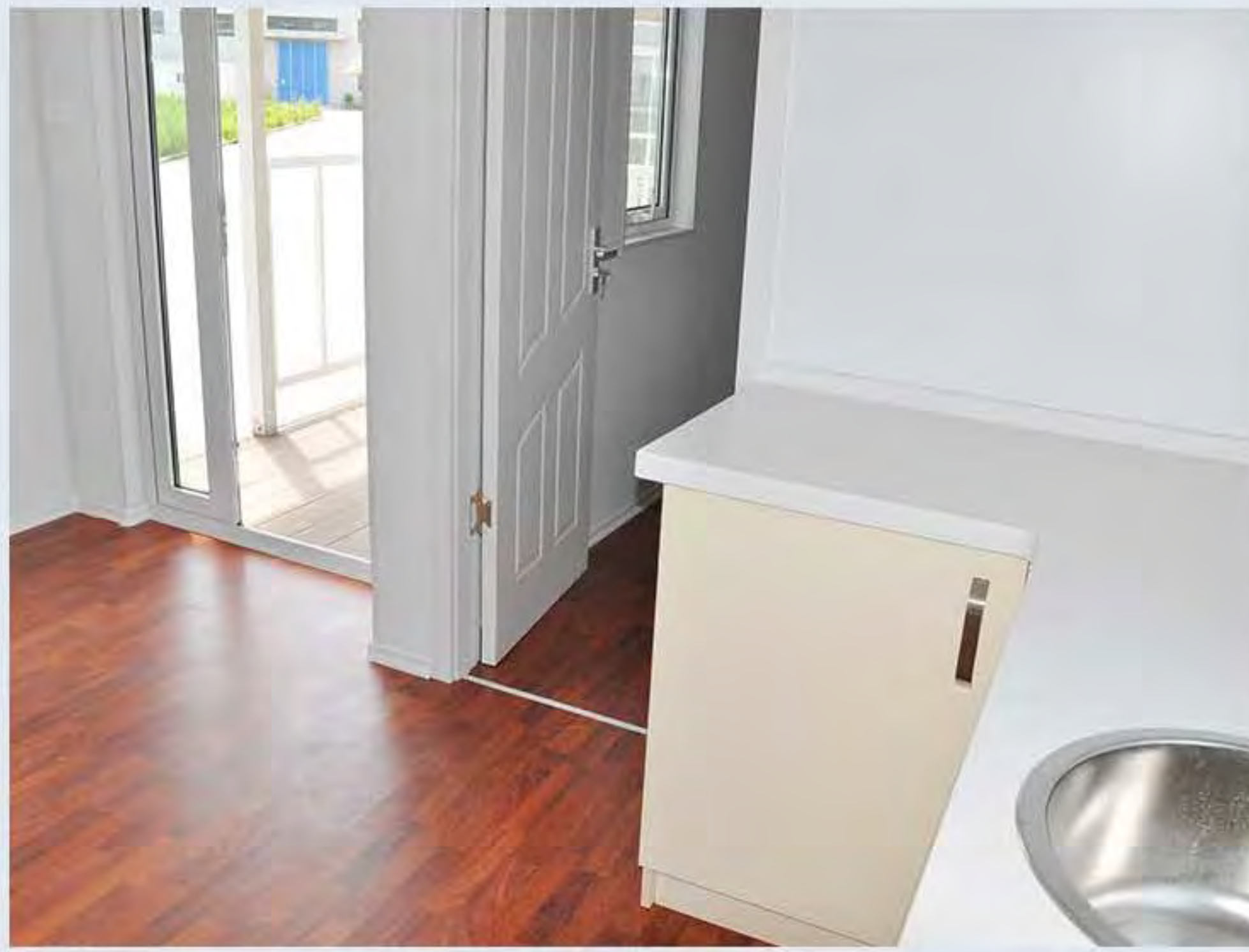


FLOOR PLAN



Indoor display

- lounge
- Bed
- kichen
- Bath





Foldable House 929



Foldable House 939



Foldable House 939

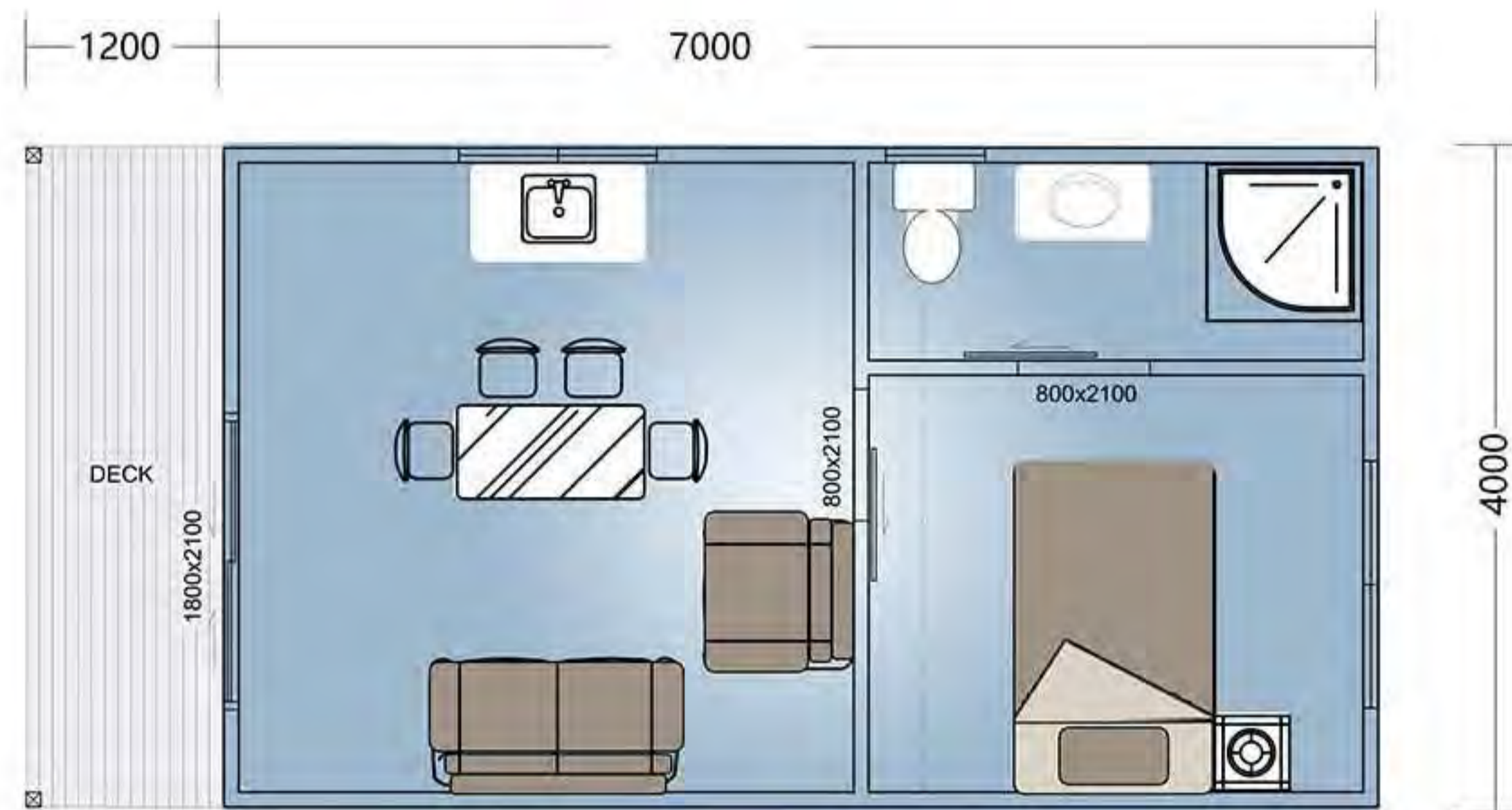
Product description

Area :28m²

Size :7mx4m

Deck :1.2mx4m

True blue



FLOOR PLAN



Foldable House 939



Foldable House 819



Foldable House 819



Foldable House 819

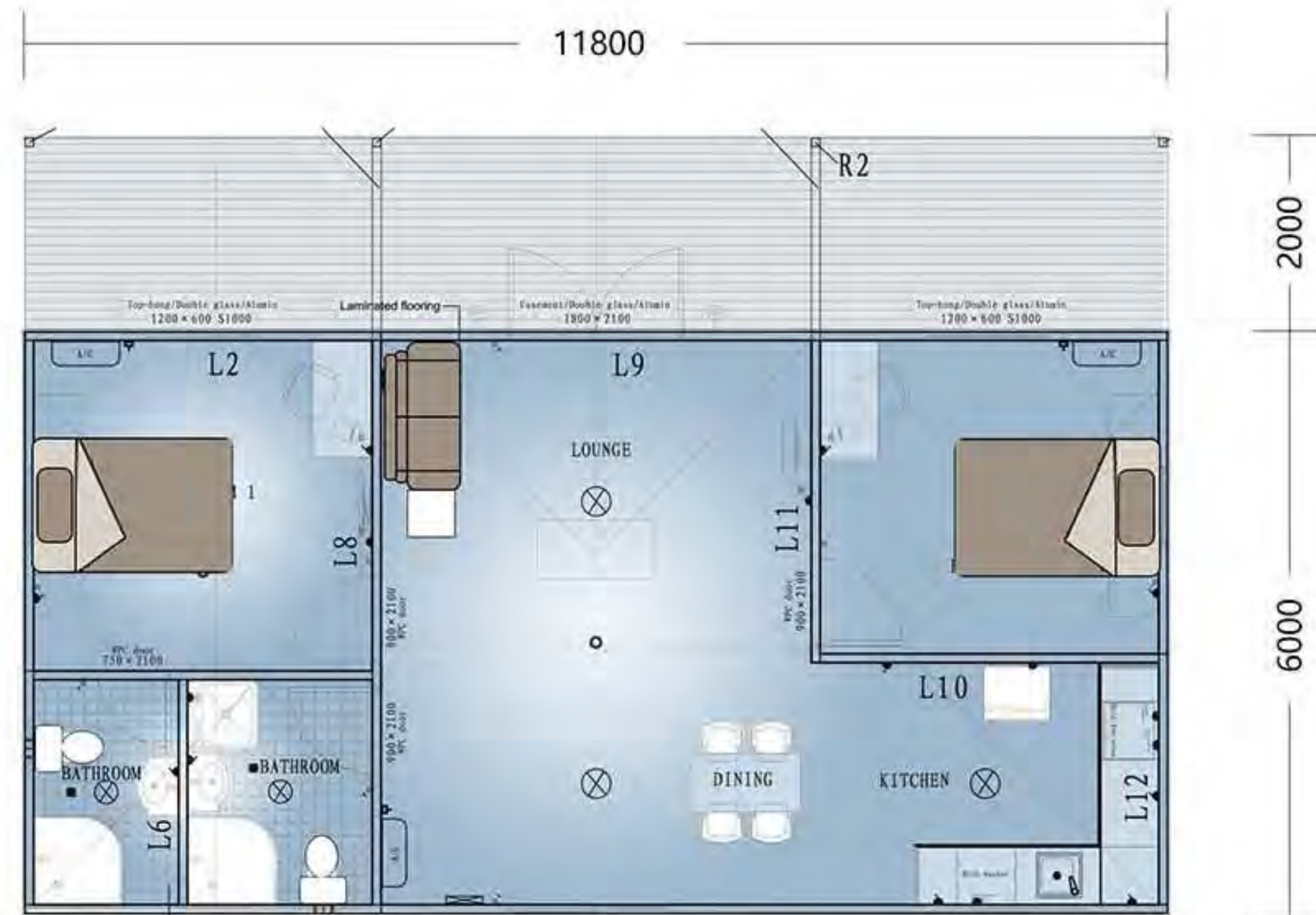
Product description

Area :70.8m²

Size :11.8mx8m

Deck :11.8mx2m

True blue



FLOOR PLAN

Foldable House 802





Foldable House 802

Product description

Area :36.6m²

Size :10.8mx3.4m



FLOOR PLAN

Foldable House 802



Foldable House 713

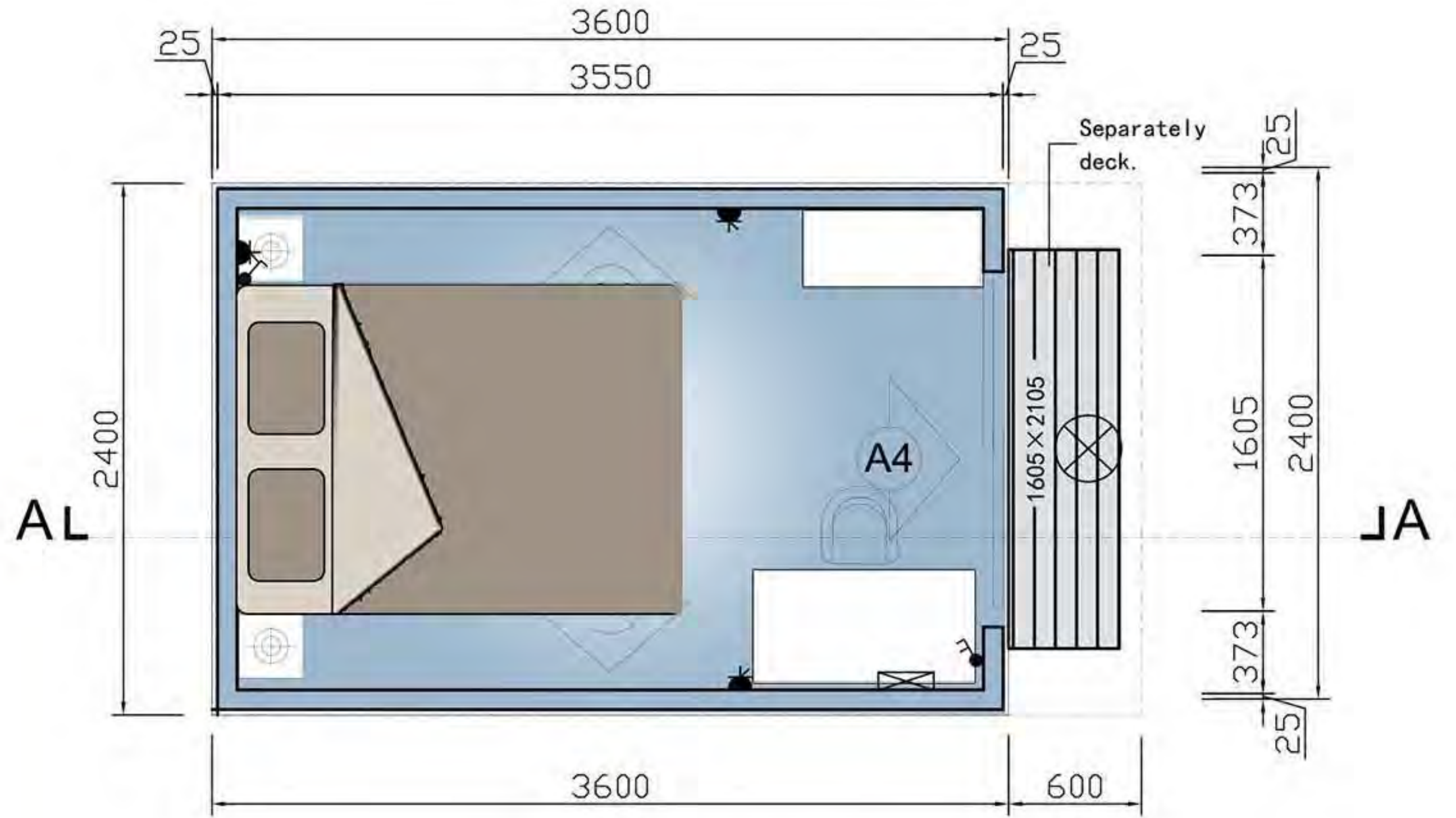




Foldable House 713

Product description

Area :8.64m ²
Size :3.6mx2.4m



FLOOR PLAN

Foldable House 713





Foldable House 52



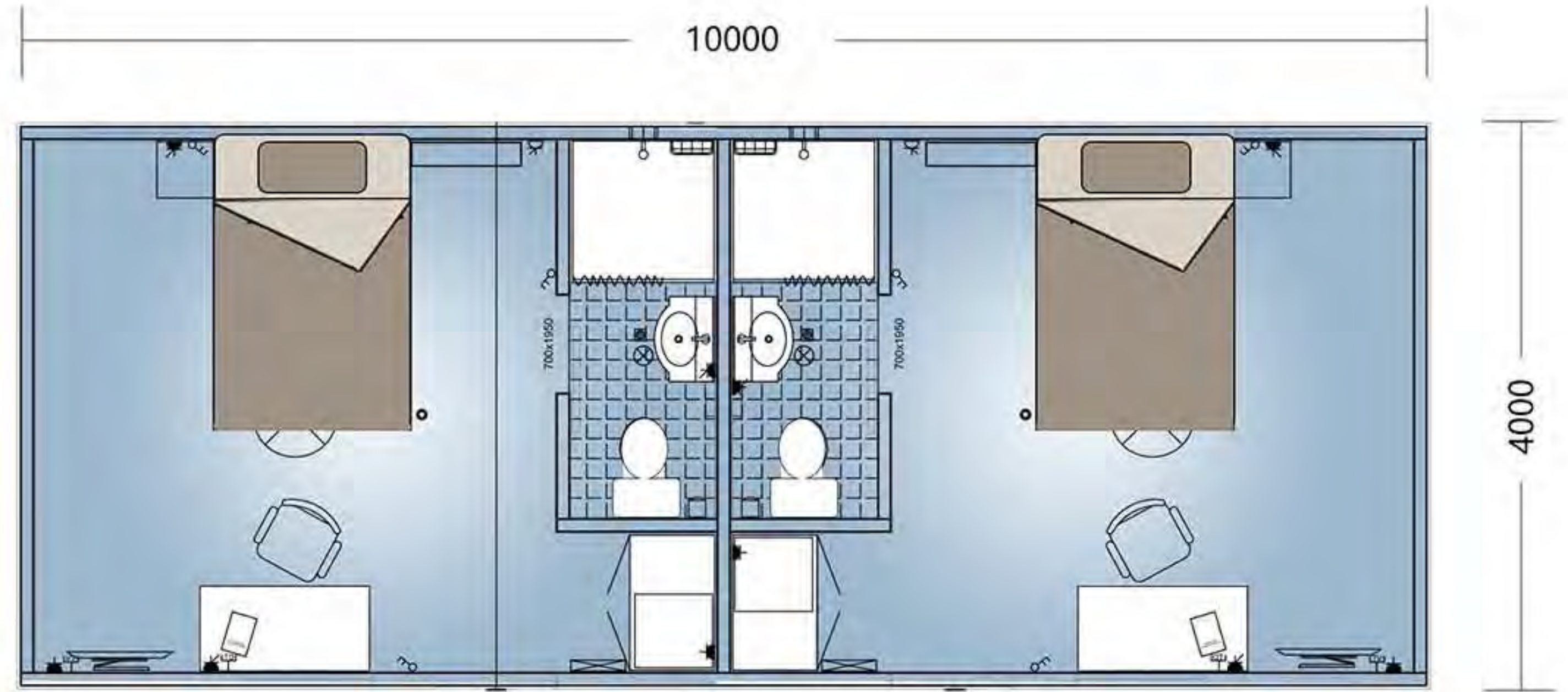


Foldable House 52

Product description

Area :40m²

Size :10mx4m



FLOOR PLAN



Foldable House 152



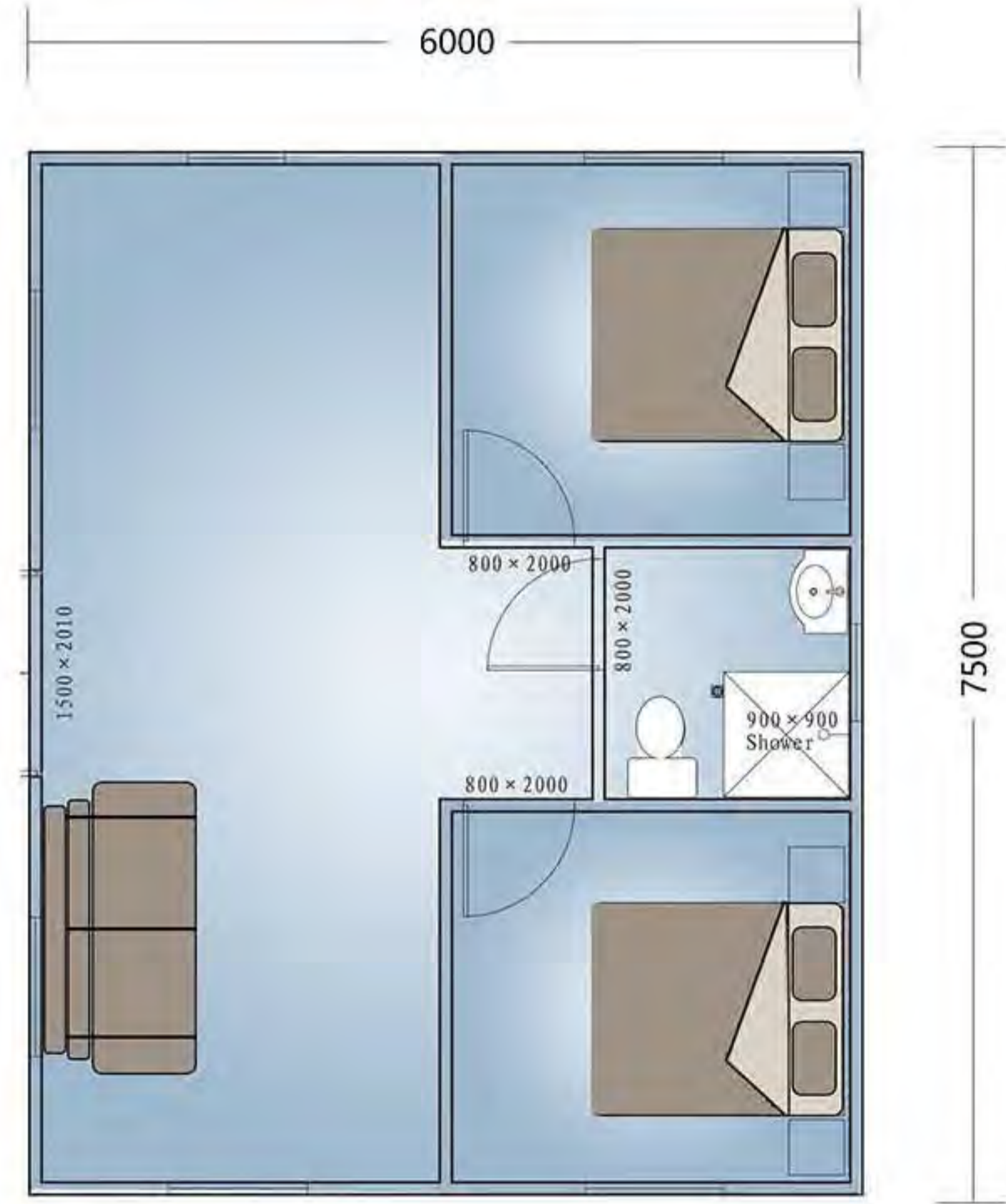


Foldable House 152

Product description

Area :45m²

Size :6mx7.5m



FLOOR PLAN

Foldable House 705



True blue

Foldable House 705

Product description

Area :30.24m²

Size :8.4mx3.6m



FLOOR PLAN

Foldable House MH4094



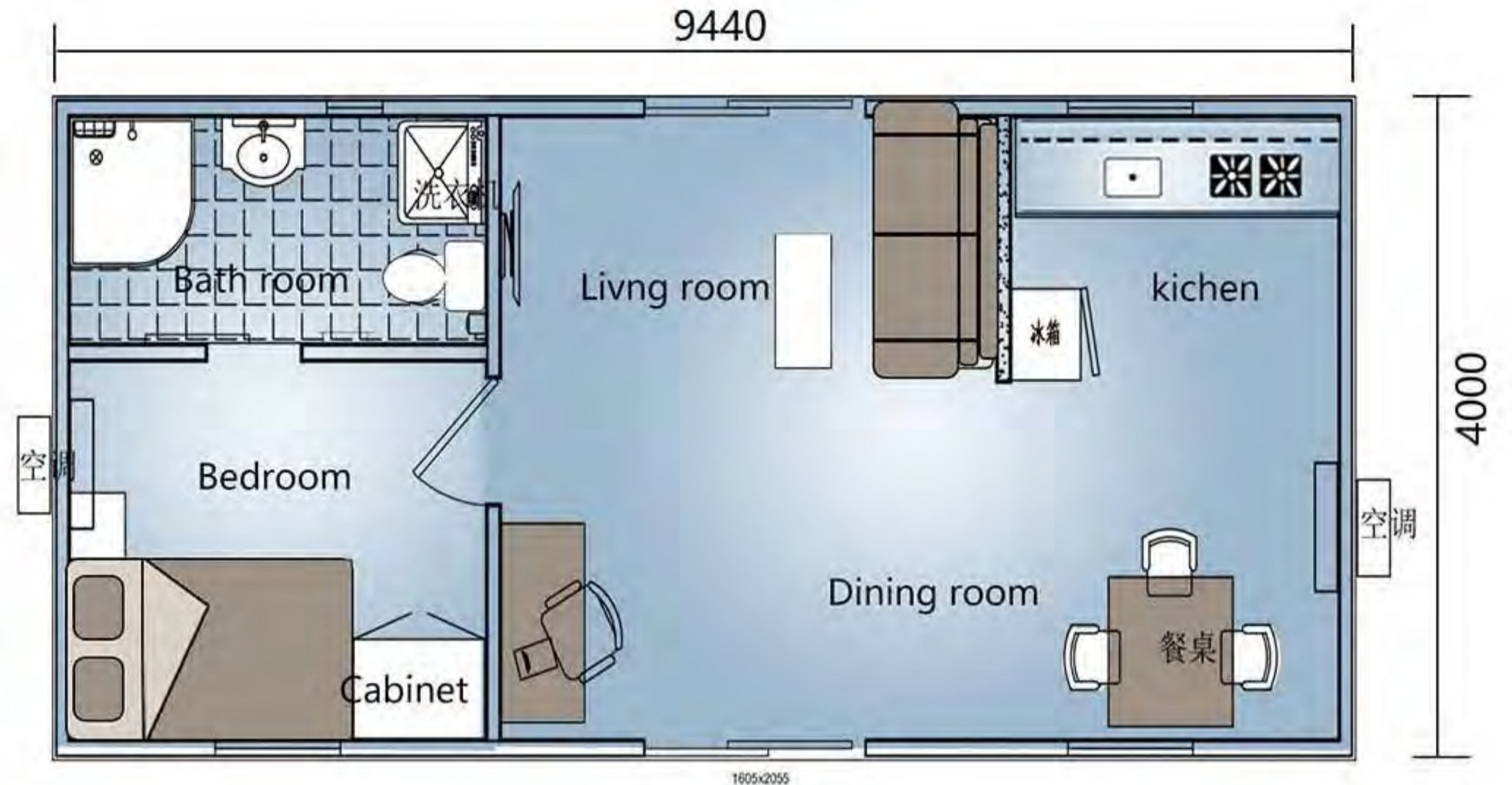


Foldable House MH4094

Product description

Area :37.6m²

Size :9.44mx4m



FLOOR PLAN

Foldable House 2130

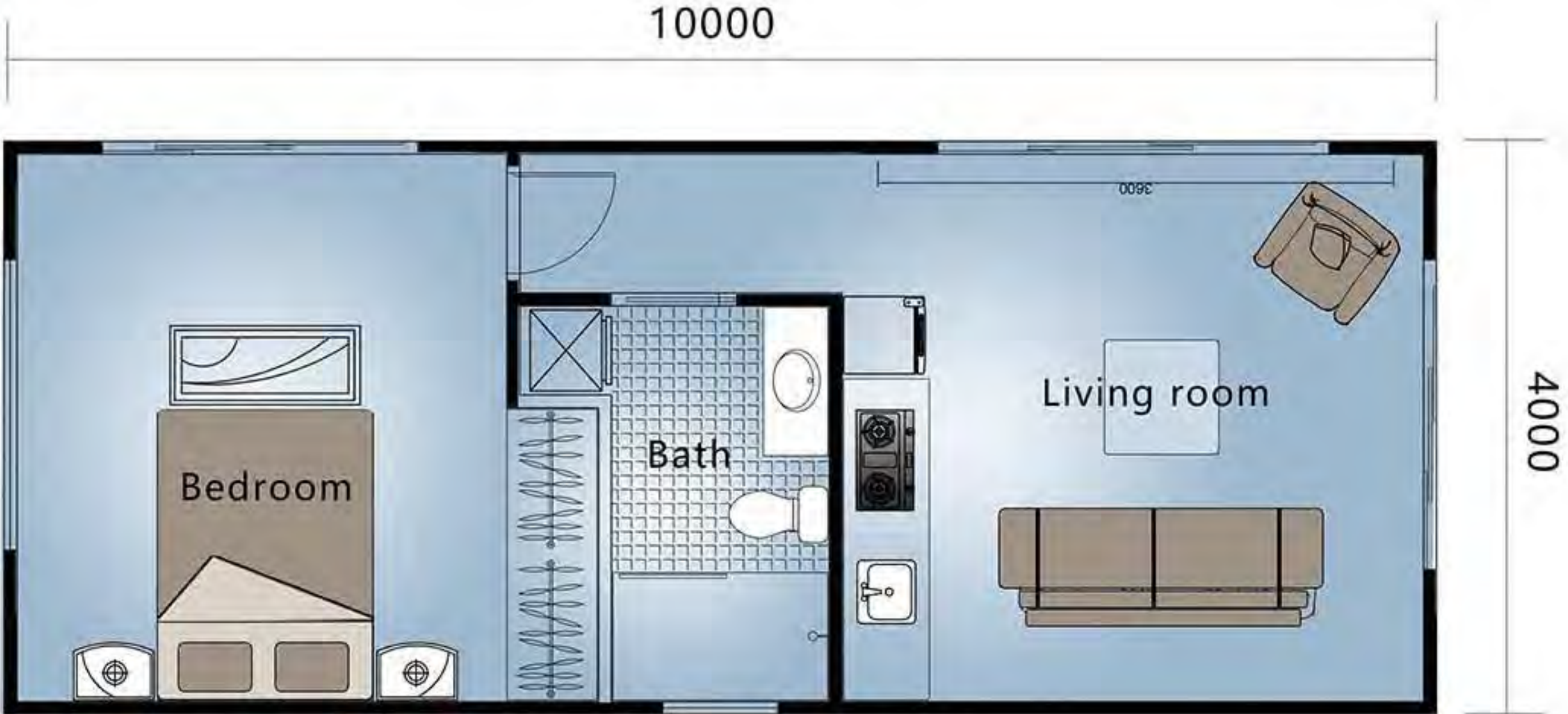




Foldable House 2117&2130

Product description

Area :40m ²
Size :10mx4m



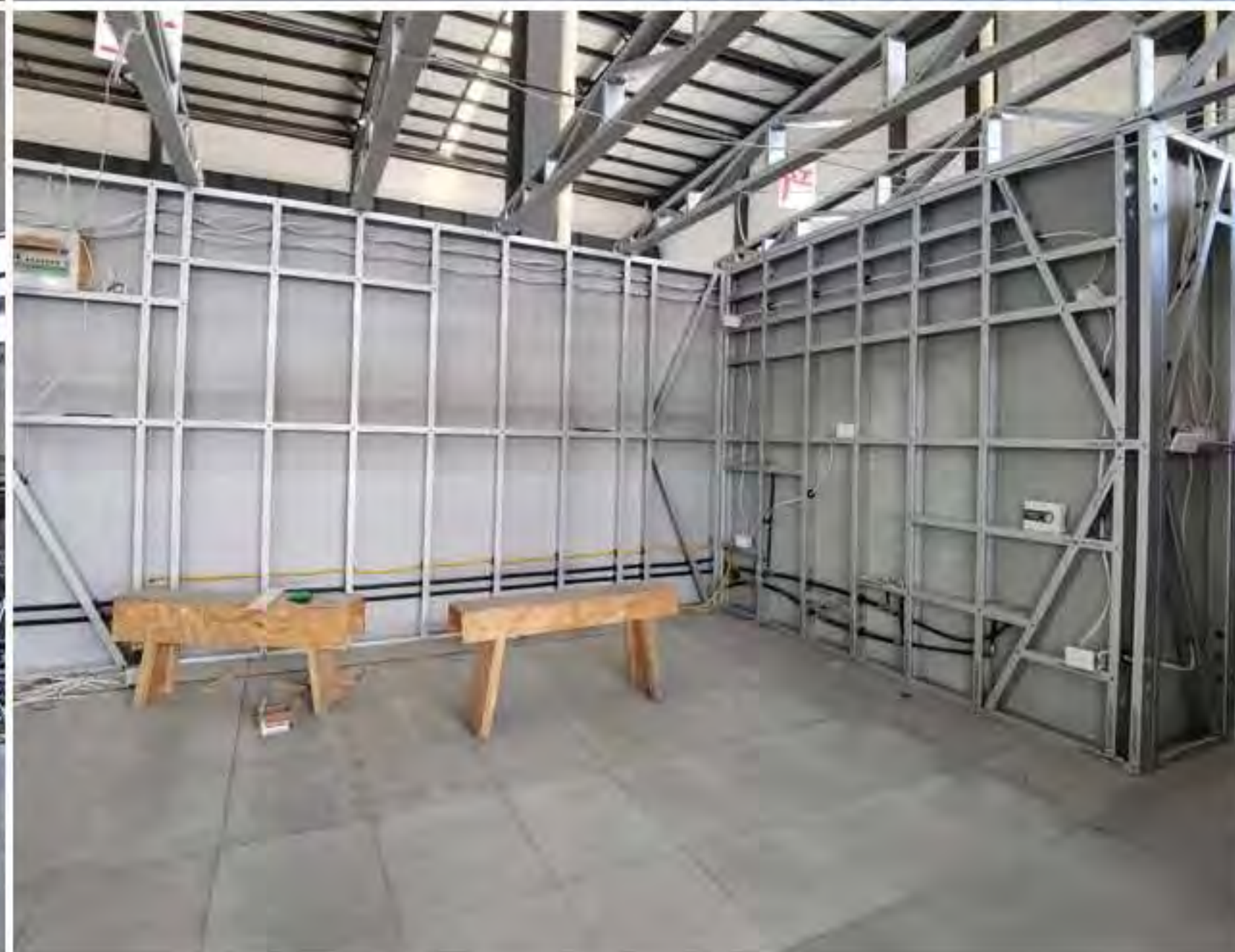
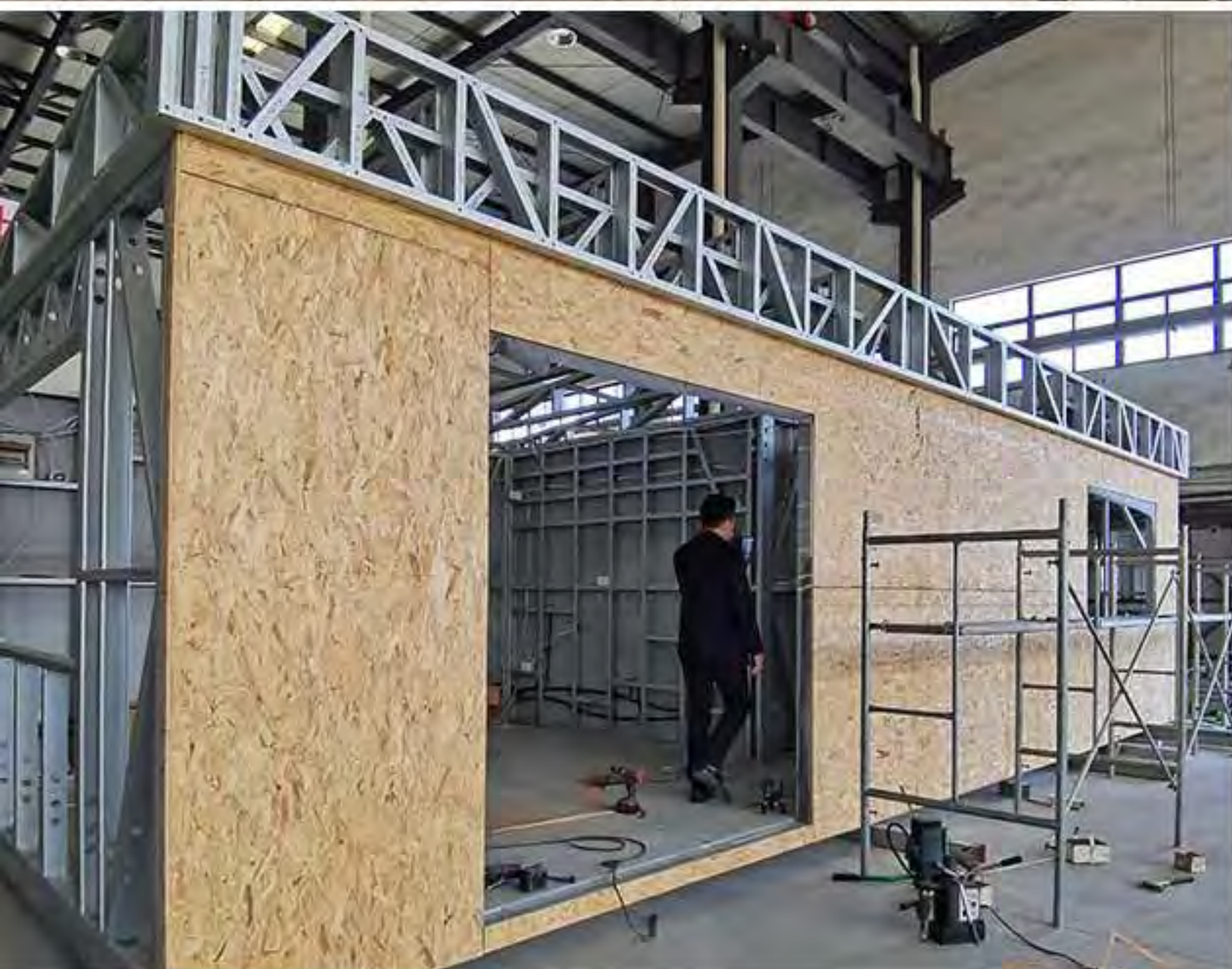
FLOOR PLAN

Foldable House 2117&2130









Foldable House 2222







Foldable House 2222

Product description

Size :6.4x10m
Area :64m ²
Deck :30m ²



FLOOR PLAN

