





ARCHITECTURE FROM FUTURE,
WAITING FUTURE YOU.

True blue



BUILD STANDARD

PRODUCT INTRODUCTION

1.

WIND PRESSURE UP TO GRADE 9

When the external doors and Windows are normally closed, there is no damage under the action of wind pressure. The load-bearing construction of high-strength columns, beams and walls further resists the influence of wind pressure and vibration.

2.

ANTICORROSION ANTI-INSECT

The exterior aluminum alloy material has great corrosion resistance. After special treatment, the material is airtight and can prevent mosquitoes, insects and termites. The service life is as long as 50 years.

3.

FIREPROOF AND WATERPROOF

The wall is made of waterproof coil and waterproof material, and the watertight performance can reach level 6 strong wind and rainstorm. The wall is made of high flame retardant sheet to increase the ability of fire and waterproof.

4.

THERMAL INSULATION UP TO GRADE 8

Warm in winter and cool in summer, comfortable and energy saving, the combination of a variety of materials is used to form a thermal insulation construction system to solve the double problem of thermal insulation and thermal insulation.

5.

SOUND INSULATION UP TO 45 DECIBELS

Double glazing and sound insulation materials are adopted to meet the national standard "Green Building Evaluation Standard" GB50378, aiming at providing a quiet indoor living environment for residents.

6.

GUARD AGAINST THEFT ANTIFREEZE

Air tightness up to 8, steel structure frame, high-strength aluminum body, reinforced door lock security, Enjoy the natural beauty of the outside while maintaining privacy.

STRUCTURE ANALYZE

Smart theme control light strip

Warm design of small living room

Smart security combination lock

270-degree viewing bedroom

High-tech explosion-proof glass

Smart viewing sunroof

Pitched roof

360-degree invincible double-view balcony



AI INTELLIGENCE
SYSTEM
cabin



11

7

3

2

9

6

13

STANDARD FUNCTION

- 1 Smart control panel
- 2 Integrated sound system
- 3 Lantern belt
- 4 Ambient light strip
- 5 Simple bar

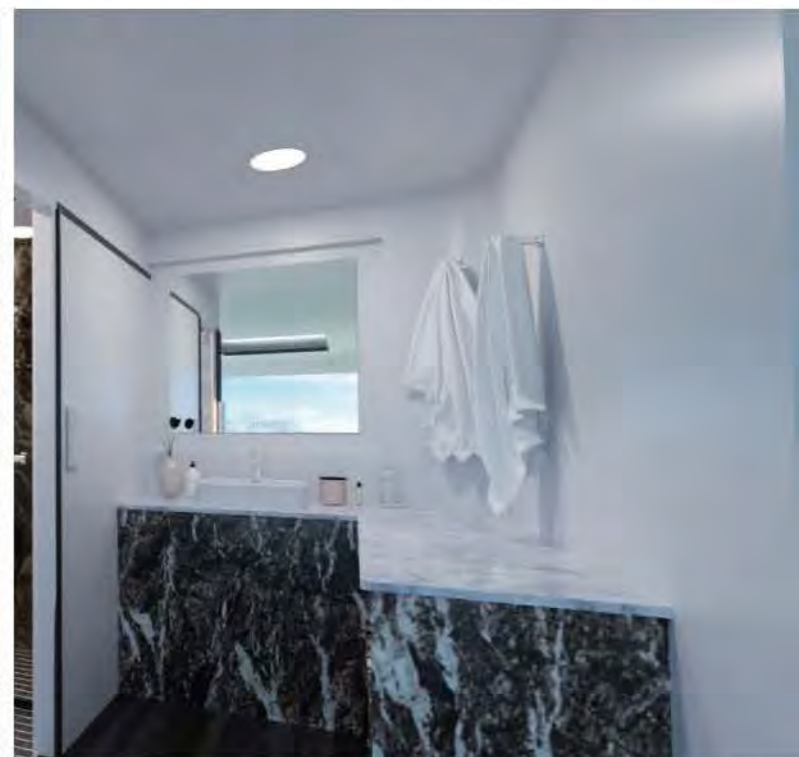
- 6 Air conditioner
- 7 Surface floodlight strip
- 8 Sash lighting belt
- 9 Automatic curtain
- 10 Fresh air



OPTIONAL FUNCTION

- 11 Panoramic electric atomized glass
- 13 Skylight (with curtain)

- 12 Electric floor heating
- 14 Automatic projection screen



AI INTELLIGENCE SYSTEM

Provide the overall solution of intelligent integrated equipment.



The whole house smart home system, mobile phone APP can be controlled remotely.

Traditional guest room hardware intelligent upgrade can only AI customer service, help the hotel to reduce costs and increase efficiency, improve guest experience.





A system to solve hotel communication and enablement problems, Unified management background, convenient and fast

Regularly help the hotel intelligent collection of data, for the hotel to continue to optimize the way of operation and maintenance to provide data support. Background automatic calculation of total revenue, cost, gross profit, financial more worry.





STARRY SKY SERIES **K30**

K30: 长(L):5.85 M 宽(W):3M 高(H):3.1M P:35



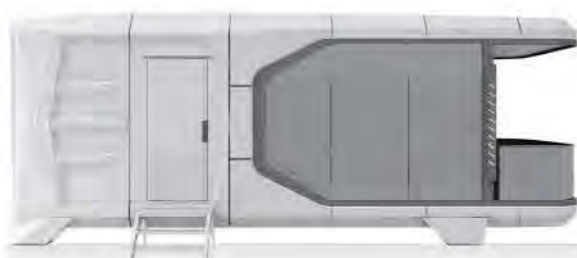
STARRY SKY SERIES **K50**

K50: 长(L):8.5 M 宽(W):3.3M 高(H):3.3M P:37



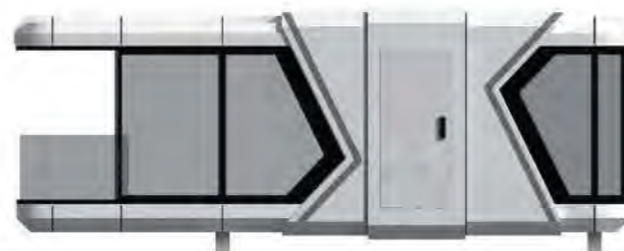
STARRY SKY SERIES **K70**

K70: 长(L):11.5 M 宽(W):3.3M 高(H):3.3M P:39



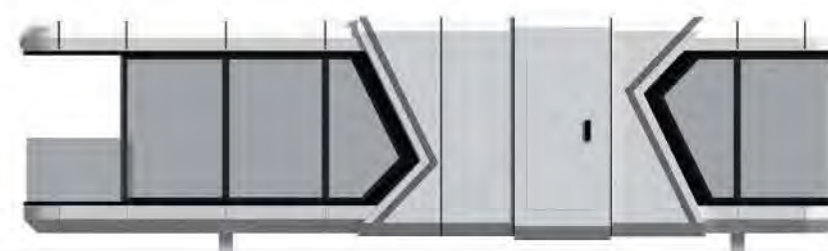
STARSHIP SERIES **T50**

T50: 长(L):8.5 M 宽(W):3.3M 高(H):3.3M P:41



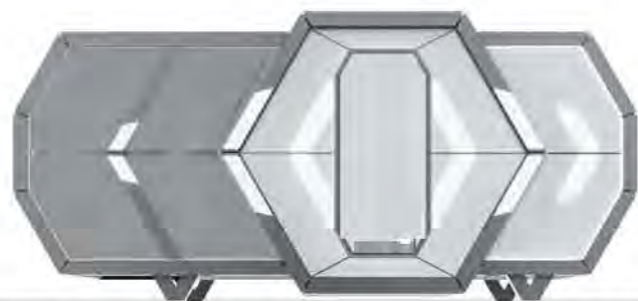
STARSHIP SERIES **X50**

X50: 长(L):8.5 M 宽(W):3.3M 高(H):3.3M P:43



STARSHIP SERIES **X70**

X70: 长(L):11.5 M 宽(W):3.3M 高(H):3.3M P:45



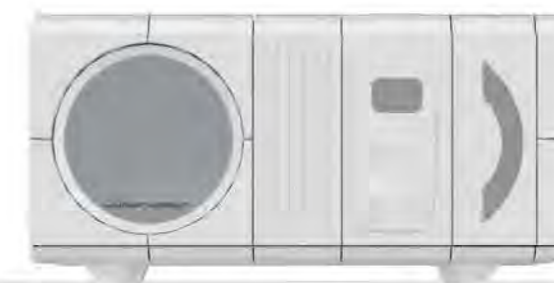
NEBULAE SERIES **C30**

C30: 长(L):6.6 M 宽(W):3M 高(H):3.1M P:47



CONSTELLATION **M50**

M50: 长(L):8 M 宽(W):3.3M 高(H):3.2M P:49



STAR BLUE SERIES **M30**

M30: 长(L):6.3 M 宽(W):3M 高(H):3.3M P:51



NEBULAE SERIES **N50**

N50: 长(L):8.5 M 宽(W):3.3M 高(H):3.3M P:53



CONSTELLATION **Z30**

Z30: 长(L):7M 宽(W):3M 高(H):3.3M



STAR MAP SERIES **Y70**

Y70: 长(L):11.5 M 宽(W):3.3M 高(H):3.3M

PRODUCT
CATALOGUE

True blue



STAR MAP SERIES

Y50

Y70: 长(L):8.5 M 宽(W):3.3M 高(H):3.3M



STAR SERIES

E50

E50: 长(L):5.8 M 宽(W):2.15M 高(H):2.5M

P:55



STAR SERIES

E30

E30: 长(L):3.85 M 宽(W):2.15M 高(H):2.5M P:56



STAR SERIES

E70

E70: 长(L):11.5 M 宽(W):2.15M 高(H):2.5M

P:57



STAR SERIES

D70

E30: 长(L):3.85 M 宽(W):2.15M 高(H):2.5M

P:58

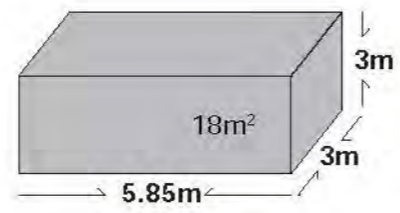
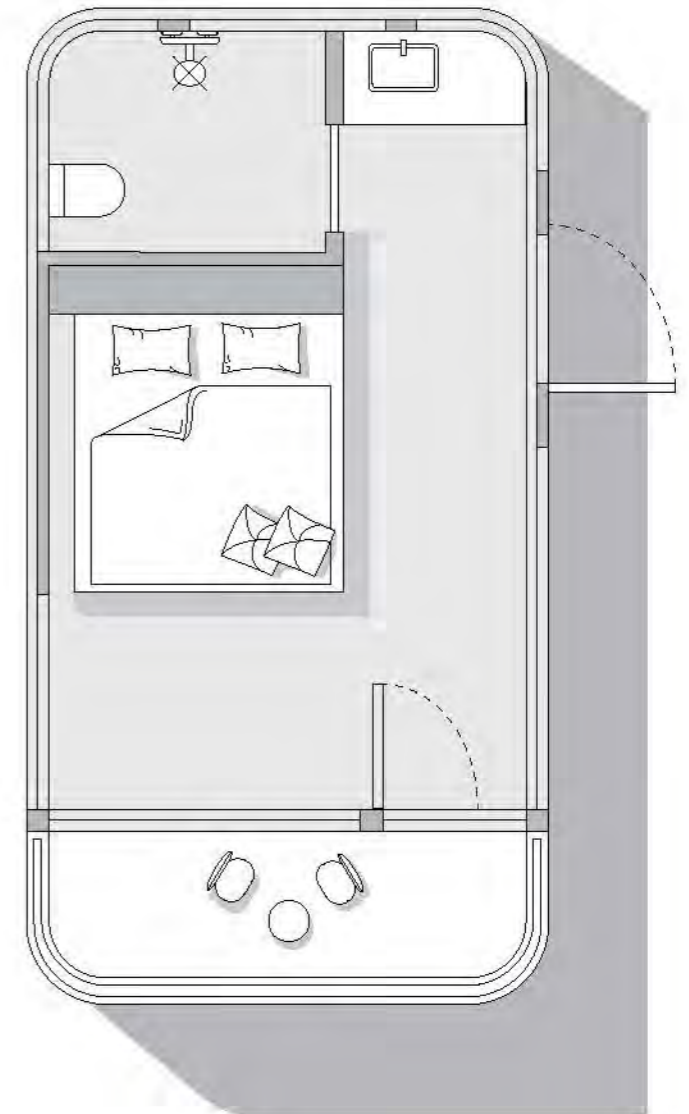
Domestic version



Export edition



K30





MAIN STRUCTURE : Thickened steel frame, aluminum exterior panels, polyurethane insulation layer, panoramic wall curtain glass (6+12+6 insulating glass), aluminum doors and Windows, intelligent access control, foot support.

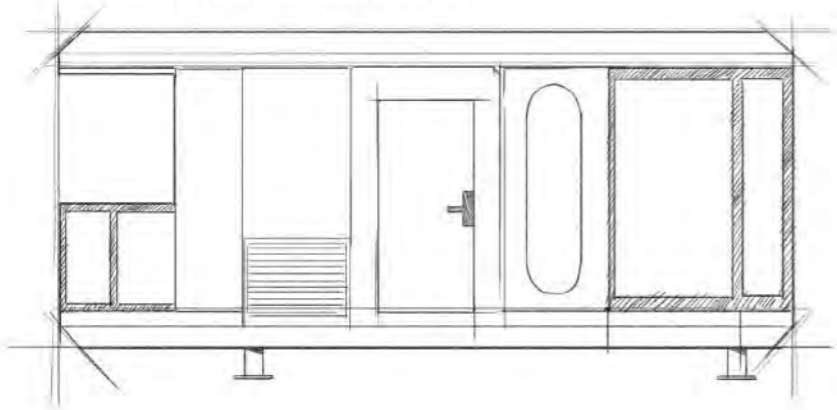
INTERNAL STRUCTURE : Bamboo charcoal fiberboard wall, advanced waterproof composite wood floor, indoor and outdoor multi-color warm light, electric curtain, large skylight, the whole house intelligent control system, brand socket panel.

SANITARY WARE : Glass side sliding door, smart toilet, water heater, shower, brand basin, brand faucet.

MAIN EQUIPMENT : Gree central air conditioning, water heater, bath ba wind heating multi-in-one integrated bath ba.

MATCHING : Electric floor heating, water pipe antifreeze, projector, fire smoke alarm, starry roof.

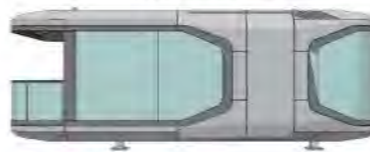
PRIMARY MANUSCRIPT



R&D GENERATION



UPGRADE 2



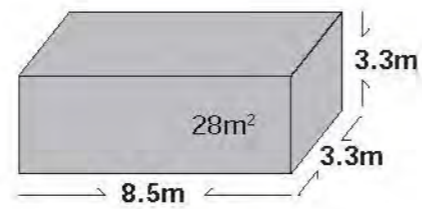
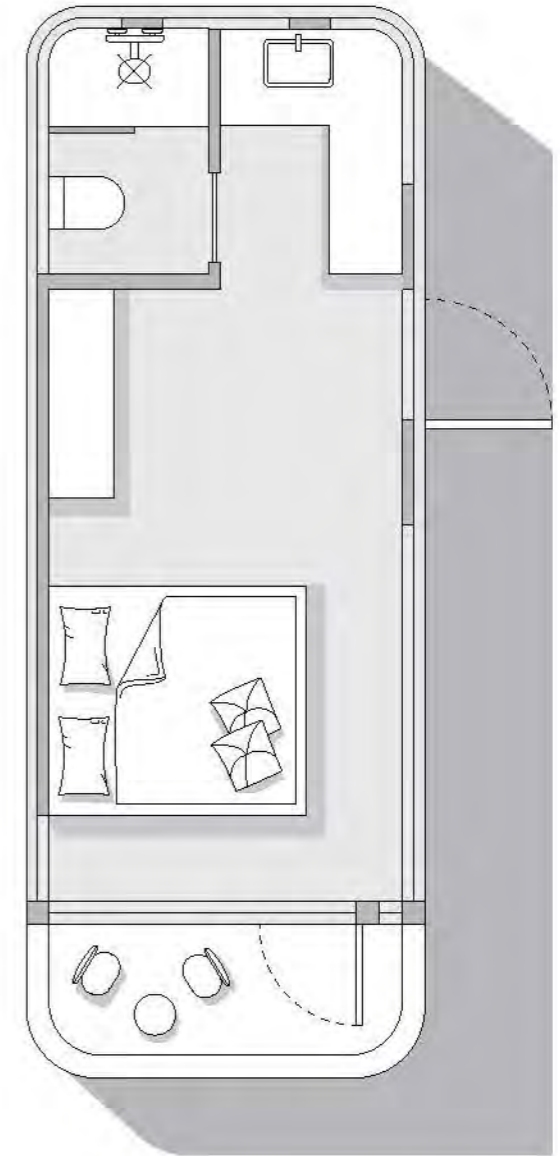
NEW THIRD GENERATION



Domestic version

Export edition

K50





MAIN STRUCTURE : Thickened steel frame, aluminum exterior panels, polyurethane insulation layer, panoramic wall curtain glass (6+12+6 insulating glass), aluminum doors and Windows, intelligent access control, foot support.

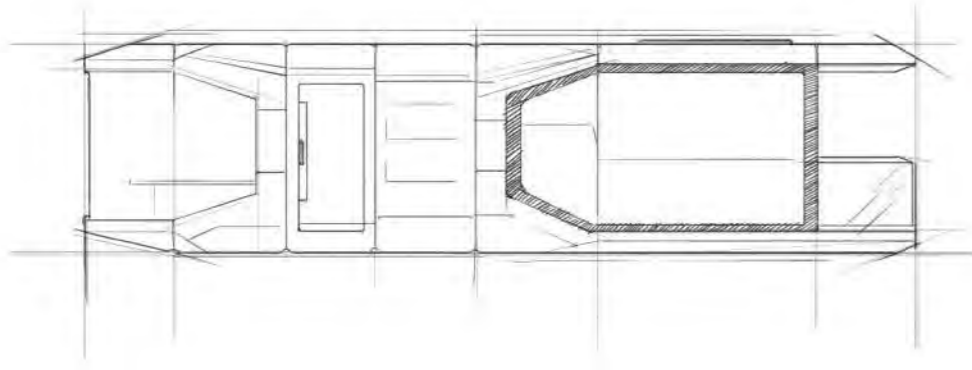
INTERNAL STRUCTURE : Bamboo charcoal fiberboard wall, advanced waterproof composite wood floor, indoor and outdoor multi-color warm light, electric curtain, large skylight, the whole house intelligent control system, brand socket panel.

SANITARY WARE : Glass side sliding door, smart toilet, water heater, shower, brand basin, brand faucet.

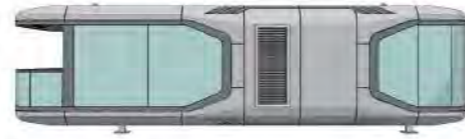
MAIN EQUIPMENT : Gree central air conditioning, water heater, bath ba wind heating multi-in-one integrated bath ba.

MATCHING : Electric floor heating, water pipe antifreeze, projector, fire smoke alarm, starry roof.

PRIMARY MANUSCRIPT



R&D GENERATION



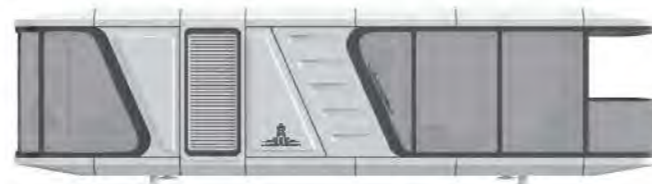
UPGRADE 2



NEW THIRD GENERATION

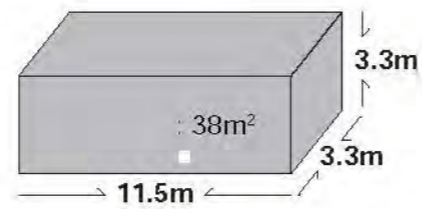
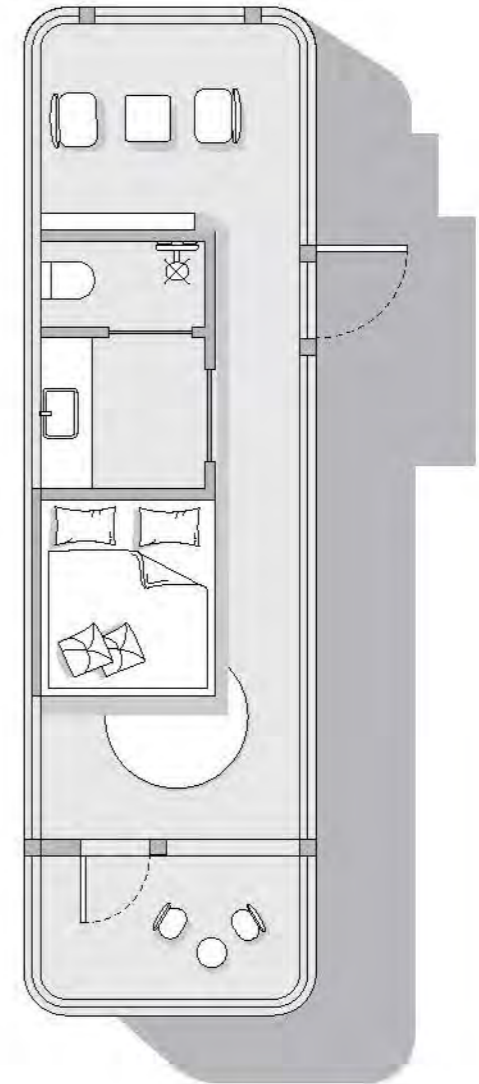


Domestic version



Export edition

K70



MAIN STRUCTURE :Thickened steel frame, aluminum exterior panels, polyurethane insulation layer, panoramic wall curtain glass (6+12+6 insulating glass), aluminum doors and Windows, intelligent access control, foot support.

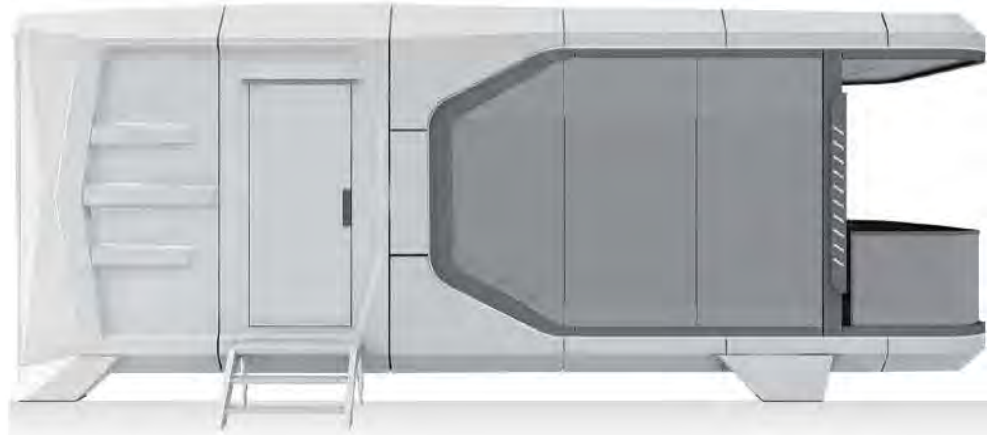
INTERNAL STRUCTURE:Bamboo charcoal fiberboard wall, advanced waterproof composite wood floor, indoor and outdoor multi-color warm light, electric curtain, large skylight, the whole house intelligent control system, brand socket panel.

SANITARY WARE :Glass side sliding door, smart toilet, water heater, shower, brand basin, brand faucet.

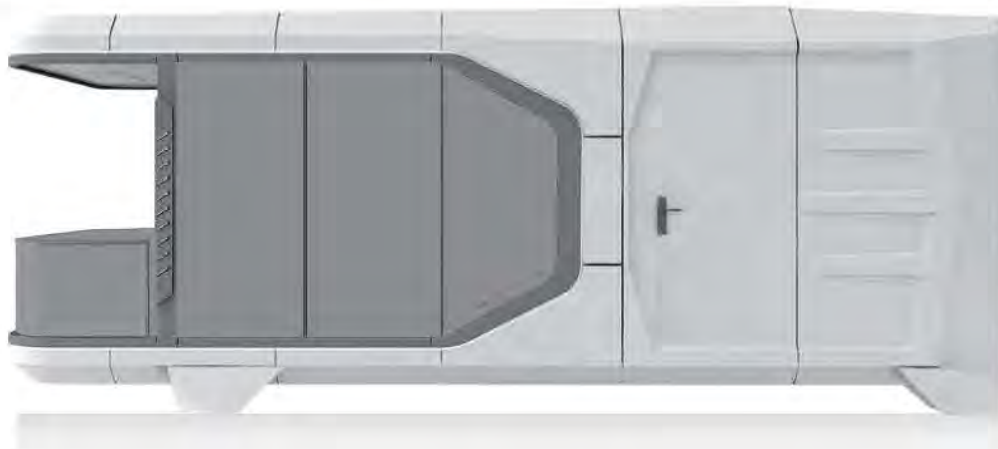
MAIN EQUIPMENT :Gree central air conditioning, water heater, bath ba wind heating multi-in-one integrated bath ba.

MATCHING :Electric floor heating, water pipe antifreeze, projector, fire smoke alarm, starry roof.

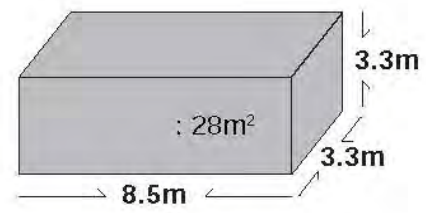
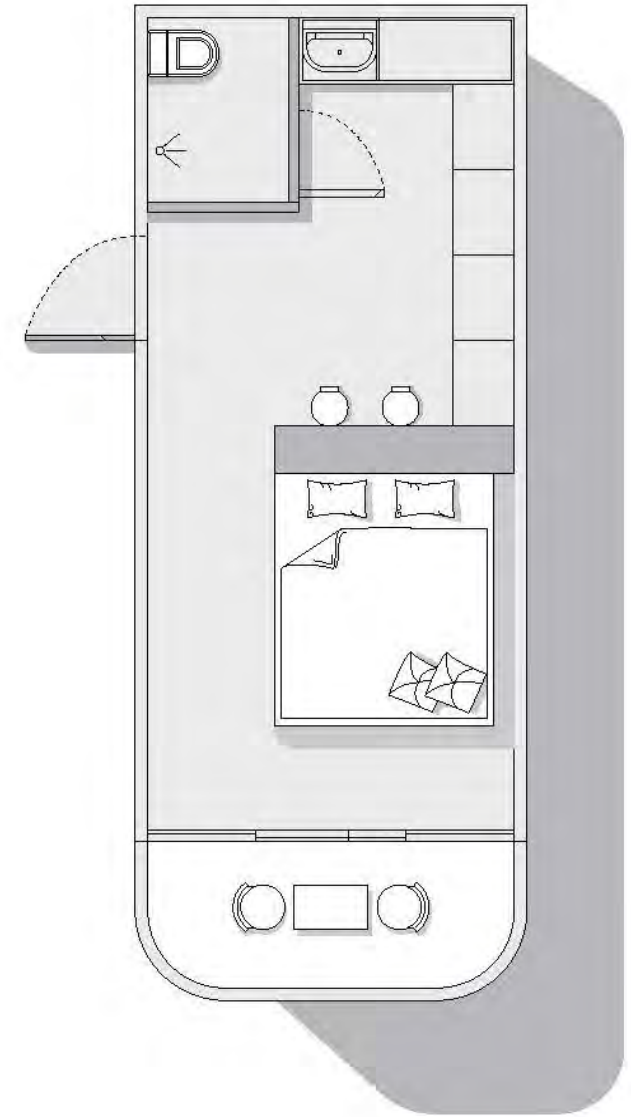
Domestic version



Export edition



T50





MAIN STRUCTURE :Thickened steel frame, aluminum exterior panels, polyurethane insulation layer, panoramic wall-curtain glass (6+12+6 insulating glass), aluminum doors and Windows, intelligent access control, foot support.

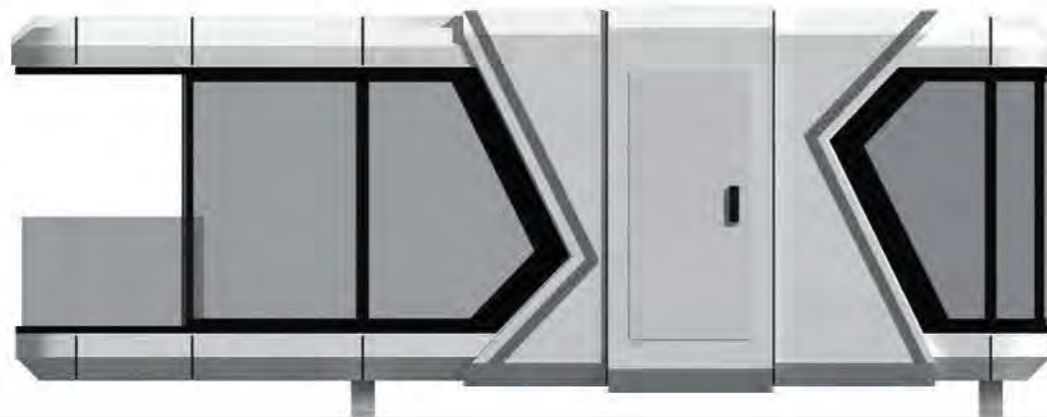
INTERNAL STRUCTURE :Bamboo charcoal fiberboard wall, advanced waterproof composite wood floor, indoor and outdoor multi-color warm light, electric curtain, large skylight, the whole house intelligent control system, brand socket panel.

SANITARY WARE :Glass side sliding door, smart toilet, water heater, shower, brand basin, brand faucet.

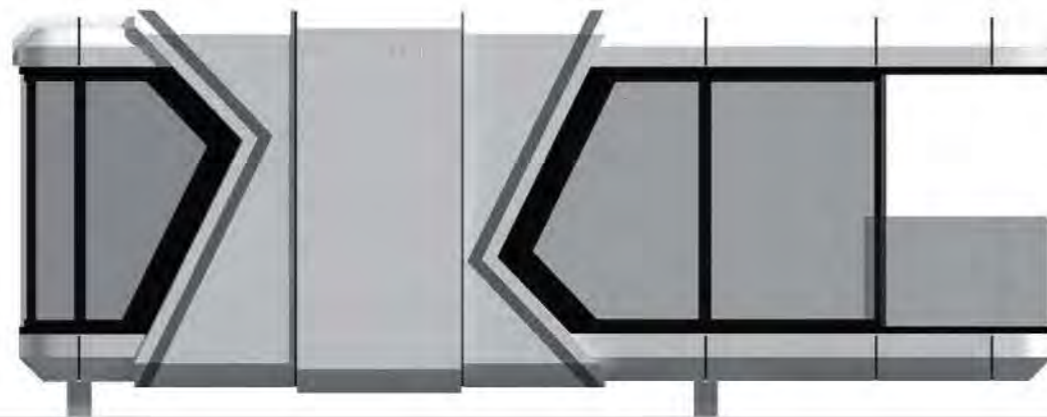
MAIN EQUIPMENT :Gree central air conditioning, water heater, bathba wind heating multi-in-one integrated bath ba .

MATCHING :Electric floor heating, water pipe antifreeze, projector, fire smoke alarm, starry roof.

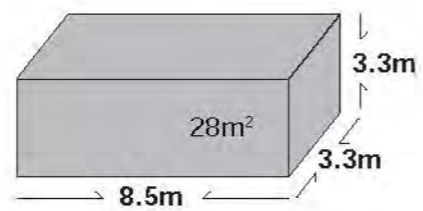
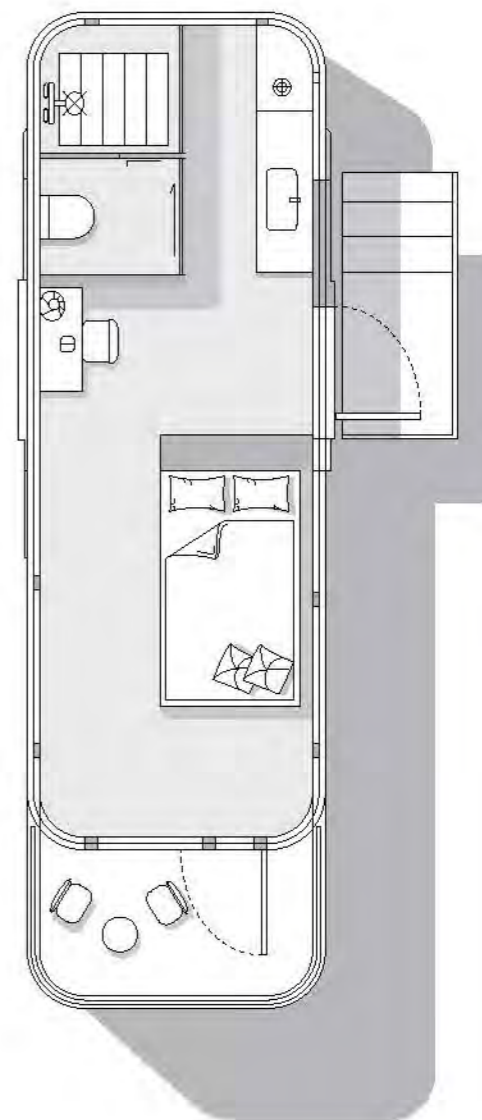
国内版 / Domestic version



Export edition



X50





MAIN STRUCTURE :Thickened steel frame, aluminum exterior panels, polyurethane insulation layer, panoramic wall curtain glass (6+12+6insulating glass), aluminum doors and Windows, intelligent access control, foot support.

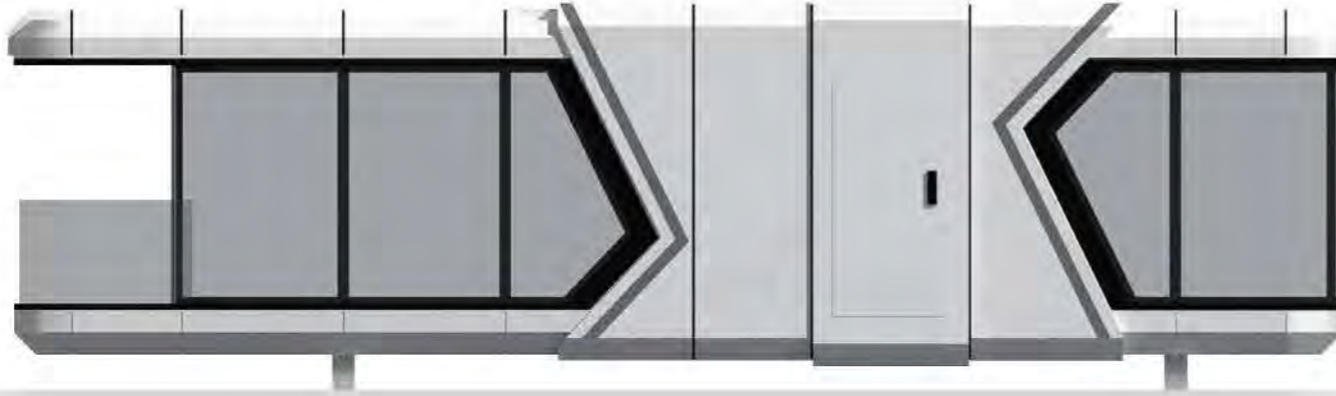
INTERNAL STRUCTURE:Bamboo charcoal fiberboard wall, advanced waterproof composite wood floor, indoor and outdoor multi-color warm light, electric curtain, large skylight, the whole house intelligent control system, brand socket panel.

SANITARY WARE :Glass side sliding door, smart toilet, water heater, shower, brand basin, brand faucet.

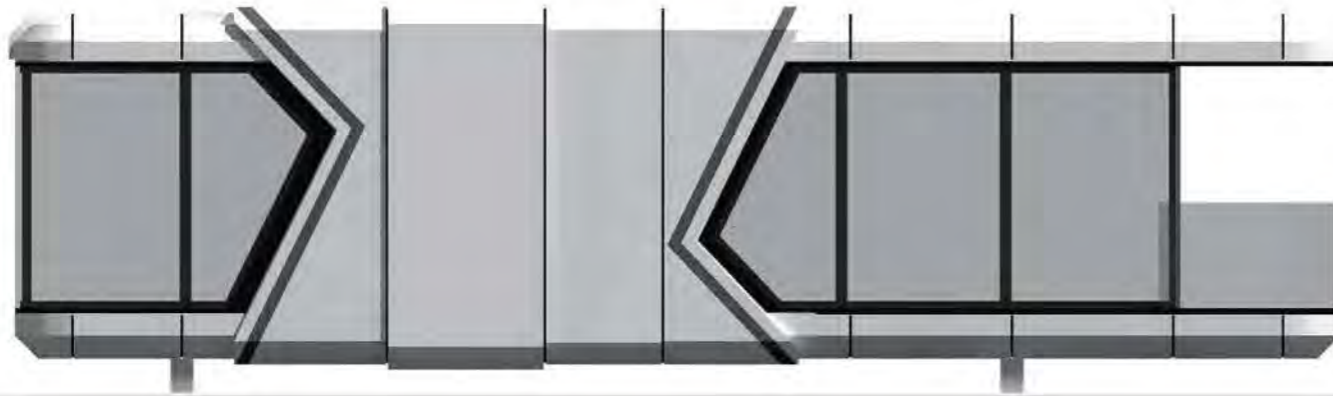
MAIN EQUIPMENT :Gree central air conditioning, water heater, bath ba wind heating multi-in-one integrated bath ba.

MATCHING :Electric floor heating, water pipe antifreeze, projector, fire smoke alarm, starry roof.

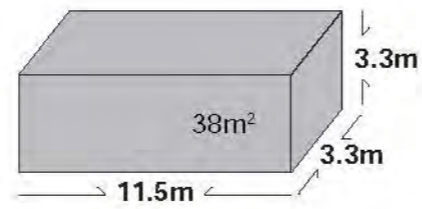
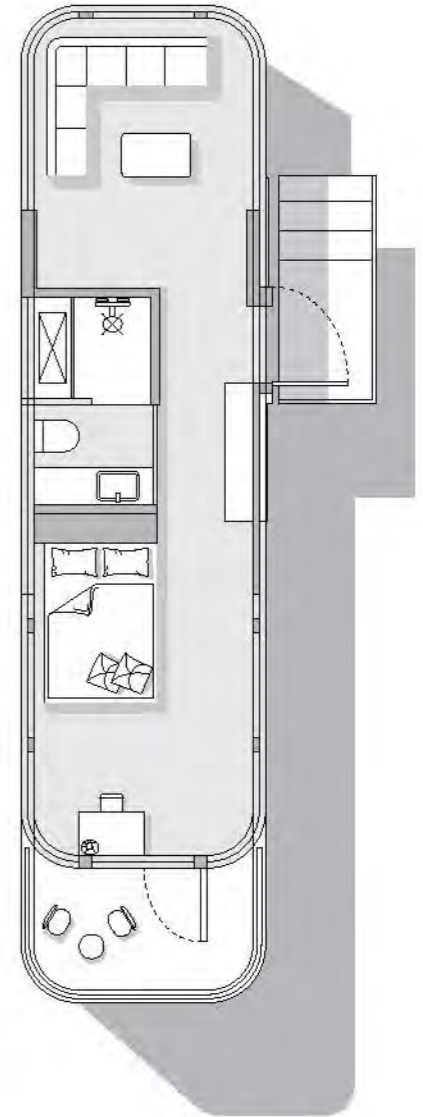
Domestic version



出口版 / Export edition



X70





MAIN STRUCTURE : Thickened steel frame, aluminum exterior panels, polyurethane insulation layer, panoramic wall curtain glass (6+12+6 insulating glass), aluminum doors and Windows, intelligent access control, foot support.

INTERNAL STRUCTURE: Bamboo charcoal fiberboard wall, advanced waterproof composite wood floor, indoor and outdoor multi-color warm light, electric curtain, large skylight, the whole house intelligent control system, brand socket panel.

SANITARY WARE : Glass side sliding door, smart toilet, water heater, shower, brand basin, brand faucet.

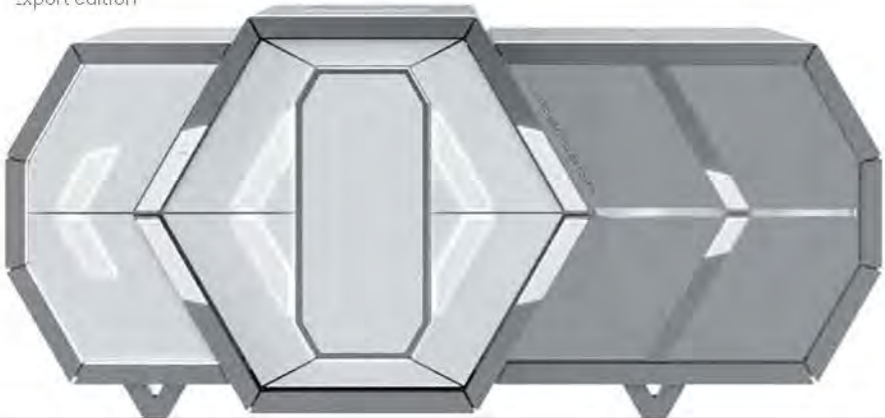
MAIN EQUIPMENT : Gree central air conditioning, water heater, bath ba wind heating multi-in-one integrated bath ba.

MATCHING : Electric floor heating, water pipe antifreeze, projector, fire smoke alarm, starry roof.

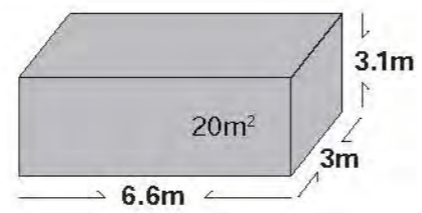
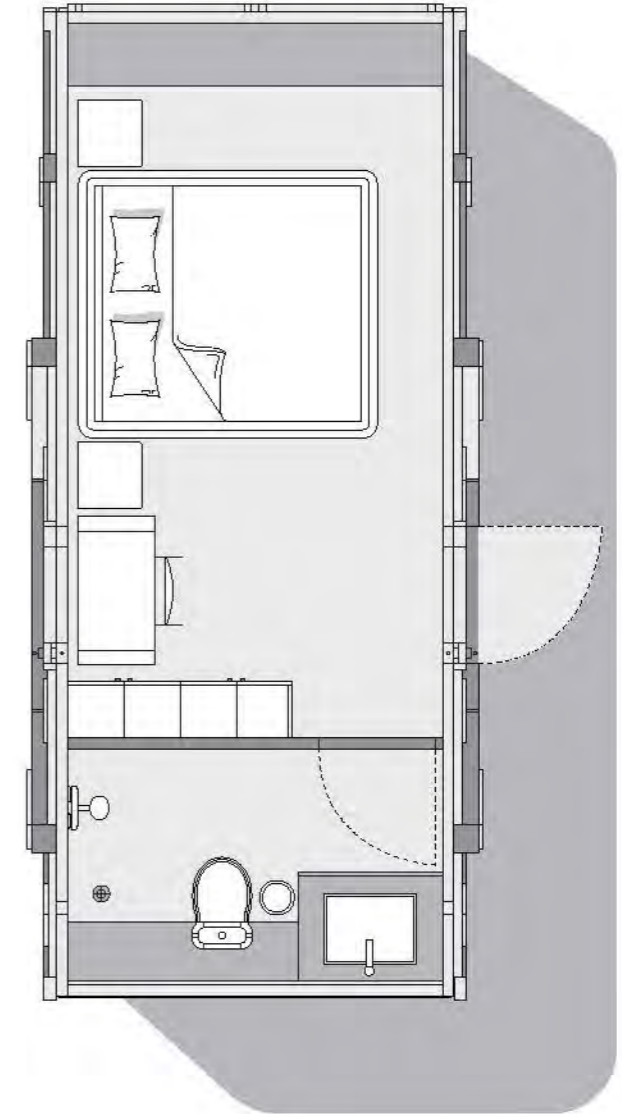
Domestic version

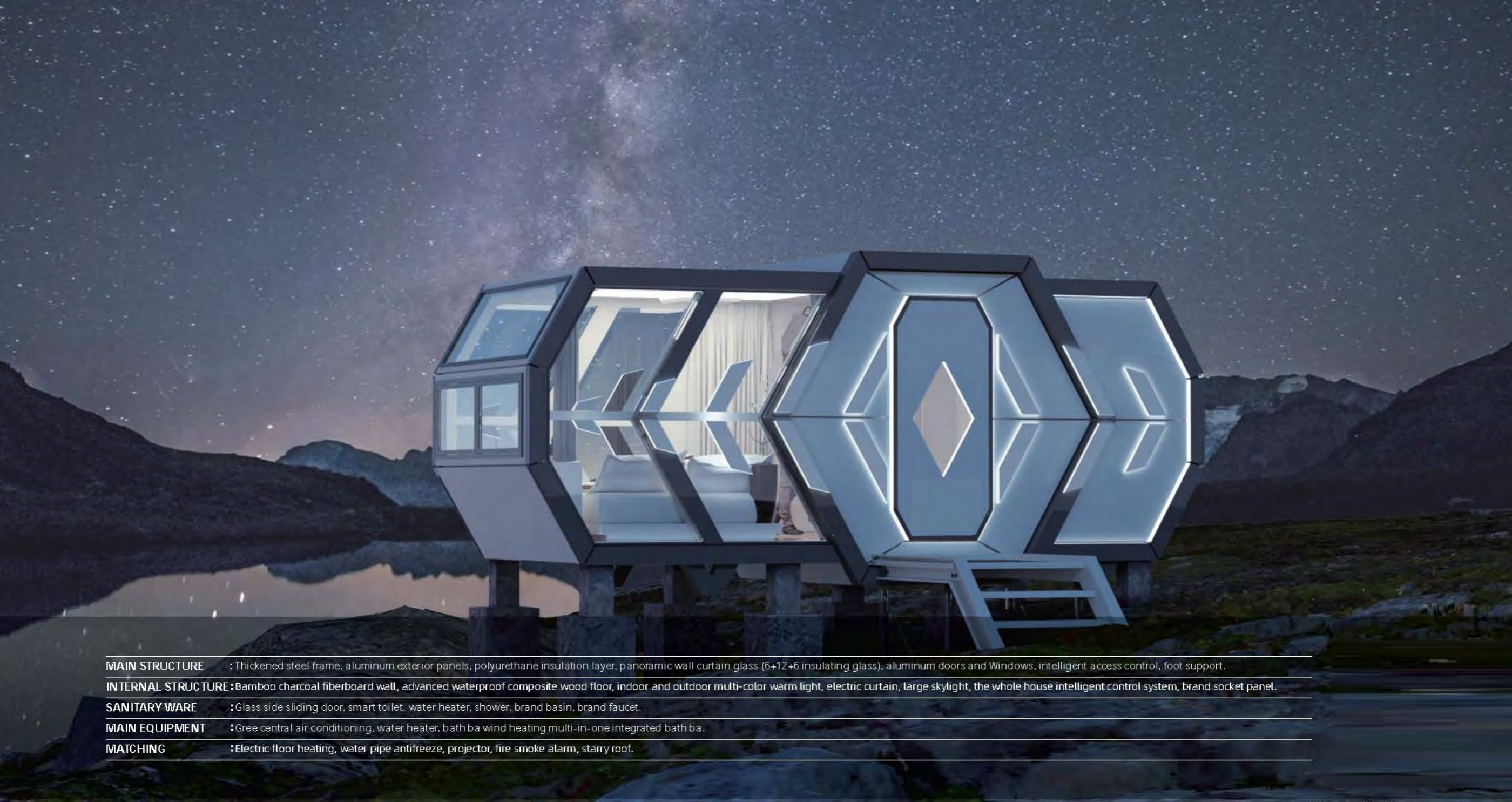


Export edition



C30





MAIN STRUCTURE : Thickened steel frame, aluminum exterior panels, polyurethane insulation layer, panoramic wall curtain glass (6+12+6 insulating glass), aluminum doors and Windows, intelligent access control, foot support.

INTERNAL STRUCTURE : Bamboo charcoal fiberboard wall, advanced waterproof composite wood floor, indoor and outdoor multi-color warm light, electric curtain, large skylight, the whole house intelligent control system, brand socket panel.

SANITARY WARE : Glass side sliding door, smart toilet, water heater, shower, brand basin, brand faucet.

MAIN EQUIPMENT : Gree central air conditioning, water heater, bath ba wind heating multi-in-one integrated bath ba.

MATCHING : Electric floor heating, water pipe antifreeze, projector, fire smoke alarm, starry roof.

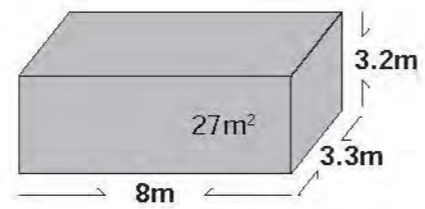
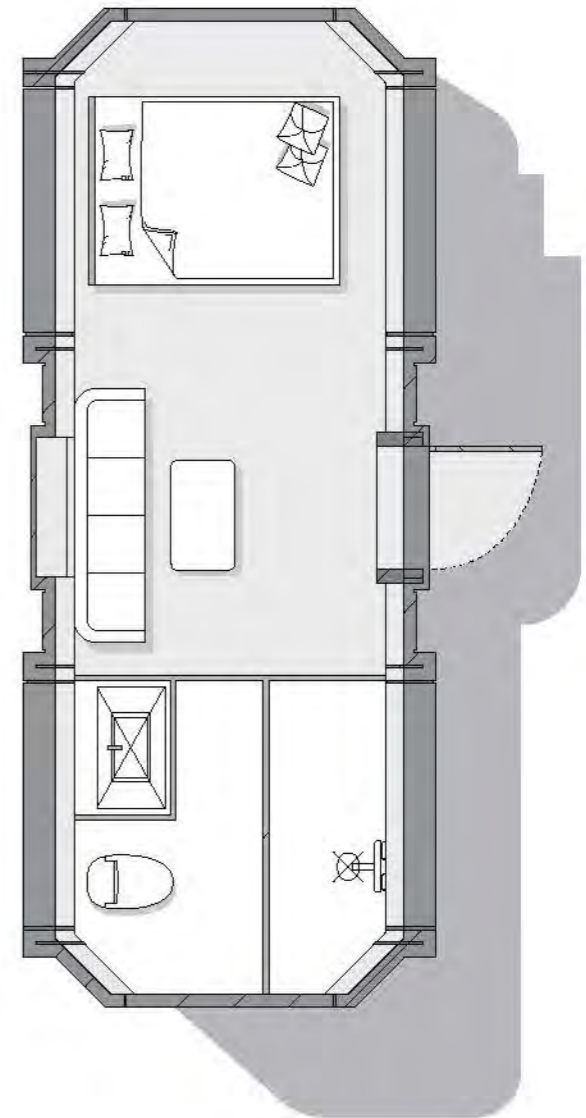
Domestic version



Export edition



M50





- MAIN STRUCTURE** : Thickened steel frame, aluminum exterior panels, polyurethane insulation layer, panoramic wall curtain glass (6+12+6 insulating glass), aluminum doors and Windows, intelligent access control, foot support.
- INTERNAL STRUCTURE** : Bamboo charcoal fiberboard wall, advanced waterproof composite wood floor, indoor and outdoor multi-color warm light, electric curtain, large skylight, the whole house intelligent control system, brand socket panel.
- SANITARY WARE** : Glass side sliding door, smart toilet, water heater, shower, brand basin, brand faucet.
- MAIN EQUIPMENT** : Gree central air conditioning, water heater, bath ba wind heating multi-in-one integrated bath ba.
- MATCHING** : Electric floor heating, water pipe antifreeze, projector, fire smoke alarm, starry roof.

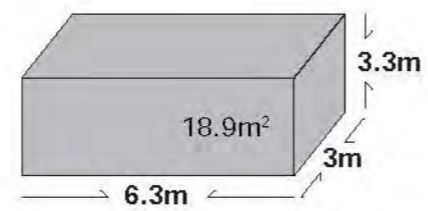
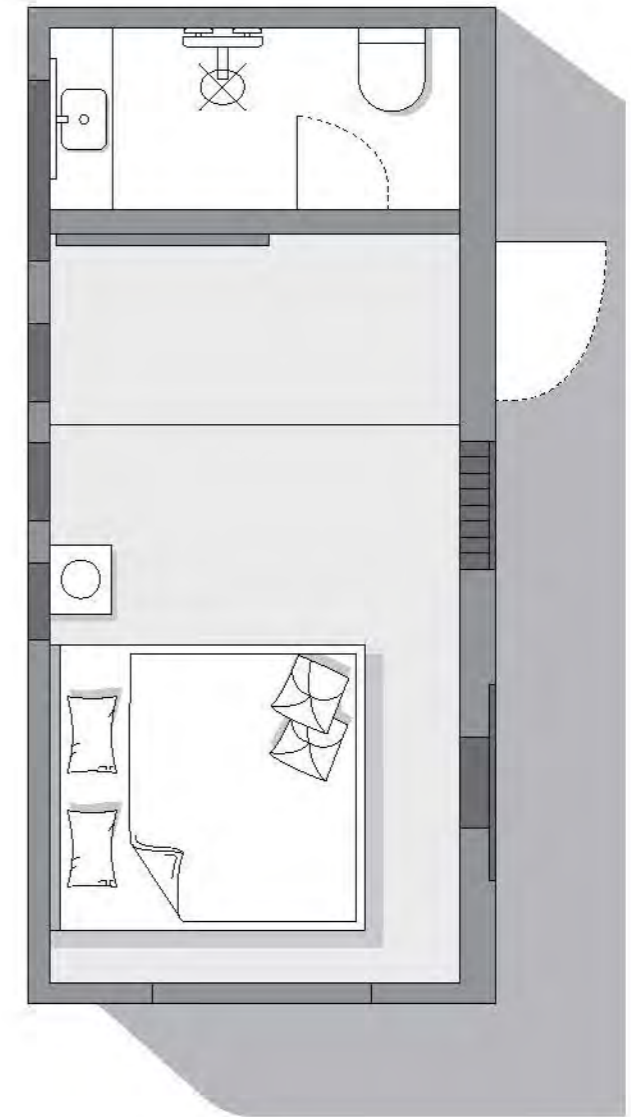
Domestic version



Export edition



M30





MAIN STRUCTURE : Thickened steel frame, aluminum exterior panels, polyurethane insulation layer, panoramic wall curtain glass (6+12+6 insulating glass), aluminum doors and Windows, intelligent access control, foot support.

INTERNAL STRUCTURE : Bamboo charcoal fiberboard wall, advanced waterproof composite wood floor, indoor and outdoor multi-color warm light, electric curtain, large skylight, the whole house intelligent control system, brand socket panel.

SANITARY WARE : Glass side sliding door, smart toilet, water heater, shower, brand basin, brand faucet.

MAIN EQUIPMENT : Gree central air conditioning, water heater, bath ba wind heating multi-in-one integrated bath ba.

MATCHING : Electric floor heating, water pipe antifreeze, projector, fire smoke alarm, starry roof.

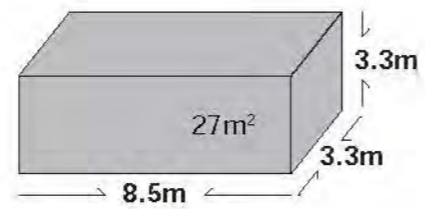
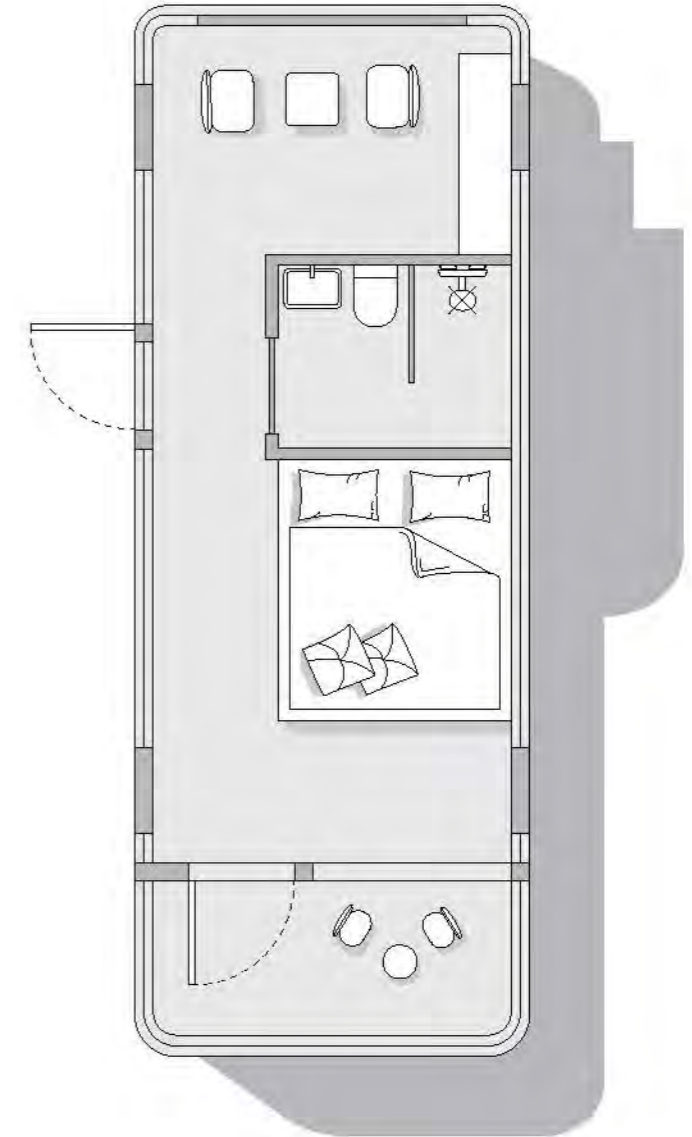
Domestic version



Export edition

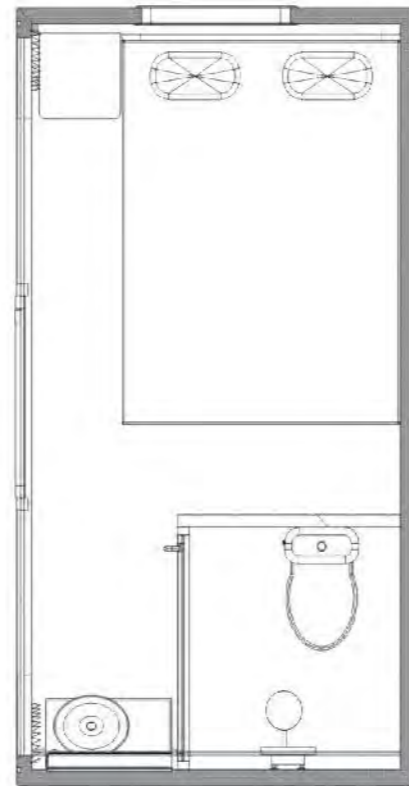


N50

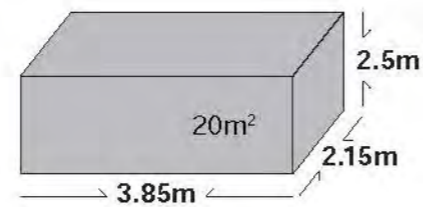




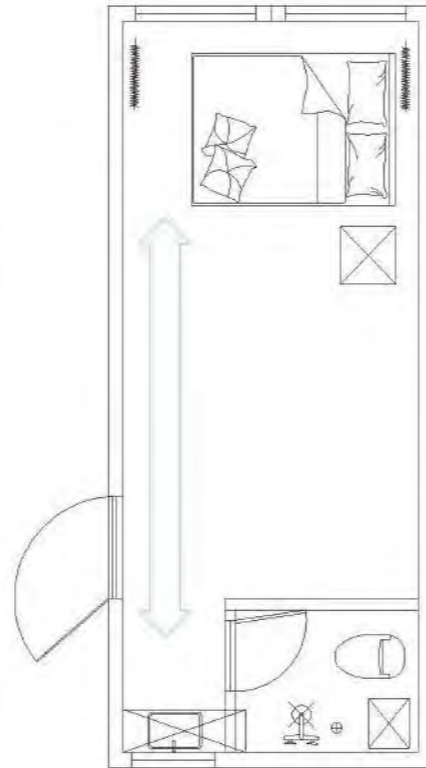
MAIN STRUCTURE	: Thickened steel frame, aluminum exterior panels, polyurethane insulation layer, panoramic wall curtain glass (6+12+6 insulating glass), aluminum doors and Windows, intelligent access control, foot support.
INTERNAL STRUCTURE	: Bamboo charcoal fiberboard wall, advanced waterproof composite wood floor, indoor and outdoor multi-color warm light, electric curtain, large skylight, the whole house intelligent control system, brand socket panel.
SANITARY WARE	: Glass side-sliding door, smart toilet, water heater, shower, brand basin, brand faucet.
MAIN EQUIPMENT	: Gree central air conditioning, water heater, bath ba wind heating multi-in-one integrated bath ba.
MATCHING	: Electric floor heating, water pipe antifreeze, projector, fire smoke alarm, starry roof.



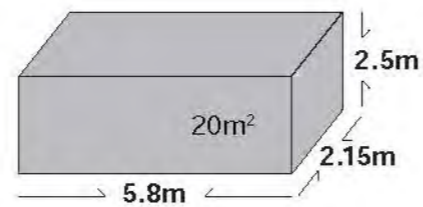
E30



MAIN STRUCTURE	: Thickened steel frame, aluminum exterior panels, polyurethane insulation layer, panoramic wall curtain glass (6+12+6 insulating glass), aluminum doors and Windows, intelligent access control, foot support.
INTERNAL STRUCTURE	: Bamboo charcoal fiberboard wall, advanced waterproof composite wood floor, indoor and outdoor multi-color warm light, electric curtain, large skylight, the whole house intelligent control system, brand socket panel.
SANITARY WARE	: Glass side sliding door, smart toilet, water heater, shower, brand basin, brand faucet.
MAIN EQUIPMENT	: Gree central air conditioning, water heater, bath ba wind heating multi-in-one integrated bath ba.
MATCHING	: Electric floor heating, water pipe antifreeze, projector, fire smoke alarm, starry roof.



E50



MAIN STRUCTURE : Thickened steel frame, aluminum exterior panels, polyurethane insulation layer, panoramic wall curtain glass (6+12+6 insulating glass), aluminum doors and Windows, intelligent access control, foot support.

INTERNAL STRUCTURE : Bamboo charcoal fiberboard wall, advanced waterproof composite wood floor, indoor and outdoor multi-color warm light, electric curtain, large skylight, the whole house intelligent control system, brand socket panel.

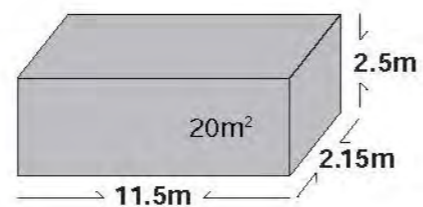
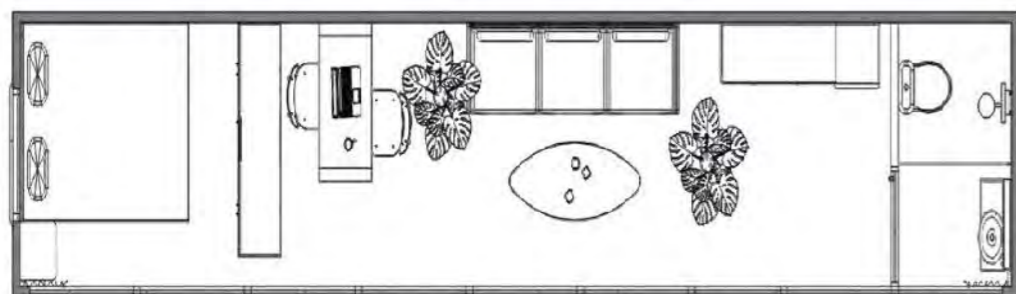
SANITARY WARE : Glass side sliding door, smart toilet, water heater, shower, brand basin, brand faucet.

MAIN EQUIPMENT : Gree central air conditioning, water heater, bath ba wind heating multi-in-one integrated bath ba.

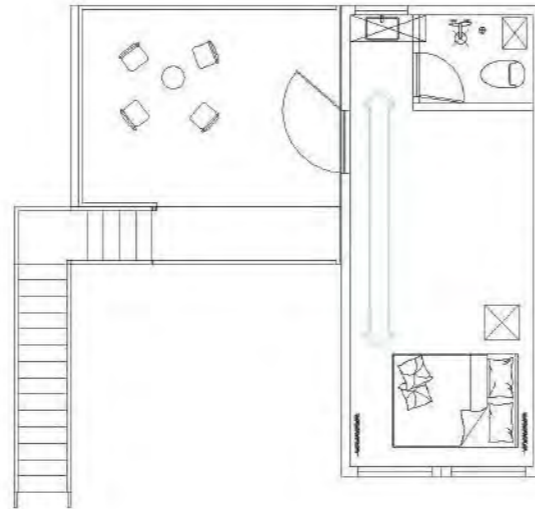
MATCHING : Electric floor heating, water pipe antifreeze, projector, fire smoke alarm, stary roof.



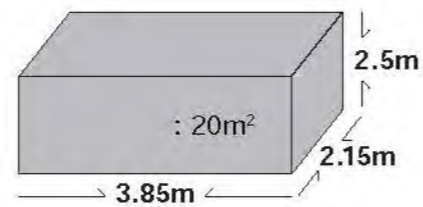
E70



MAIN STRUCTURE	: Thickened steel frame, aluminum exterior panels, polyurethane insulation layer, panoramic wall curtain glass (6+12+6 insulating glass), aluminum doors and Windows, intelligent access control, foot support.
INTERNAL STRUCTURE	: Bamboo charcoal fiberboard wall, advanced waterproof composite wood floor, indoor and outdoor multi-color warm light, electric curtain, large skylight, the whole house intelligent control system, brand socket panel.
SANITARY WARE	: Glass side sliding door, smart toilet, water heater, shower, brand basin, brand faucet.
MAIN EQUIPMENT	: Gree central air conditioning, water heater, bath ba wind heating multi-in-one integrated bath ba.
MATCHING	: Electric floor heating, water pipe antifreeze, projector, fire smoke alarm, starry roof.



D70



MAIN STRUCTURE	: Thickened steel frame, aluminum exterior panels, polyurethane insulation layer, panoramic wall curtain glass (6+12+6 insulating glass), aluminum doors and Windows, intelligent access control, foot support.
INTERNAL STRUCTURE	: Bamboo charcoal fiberboard wall, advanced waterproof composite wood floor, indoor and outdoor multi-color warm light, electric curtain, large skylight, the whole house intelligent control system, brand socket panel.
SANITARY WARE	: Glass side sliding door, smart toilet, water heater, shower, brand basin, brand faucet.
MAIN EQUIPMENT	: Gree central air conditioning, water heater, bath ba wind heating multi-in-one integrated bath ba.
MATCHING	: Electric floor heating, water pipe antifreeze, projector, fire smoke alarm, starry roof.

**INTERNAL
CONFIGURATION**





USAGE SCENARIO



BEAUTIFUL RURAL LUXURY RESORT

ONE

Demolition and construction is environmentally friendly and convenient, and it is the only choice for holding various theme activities, outdoor camping and accommodation activities, and outdoor equipment exhibitions.

CULTURAL AND TOURISM COMPLEX AND FOREST HEALTH VALLEY

TWO

The future tank adapt to a variety of terrain environment, convenient transportation. It provides a more superior choice for the development of cultural tourism and health care industry.

URBAN RENEWAL SPACE AND CITIZEN STATION

THREE

It has a small area and strong practicality, and can replace some public facilities in urban construction, such as blood donation points, public toilets, and citizen stations.



SMART TOURISM SHARING CAMPING SITE

FOUR

Group building development, travel to study and research, travel camping, enhance the sense of experience, enjoy the intimate contact with nature at ease.

ECOLOGICAL RESORT HOTEL

FIVE

The resort hotel introduces the future cabin, which not only absorbs the eye and drains, but also saves time, land area and engineering cost.

EDUCATION OF MEDICAL, HEALTH CARE RETIREMENT

SIX

In terms of education and medical care and health care for the elderly, it provides convenient stations, intelligent equipment to assist education and medical care, and the design is more humane.

17

CAMP SCHEME



**ONE-STOP HIGH-END
CAMP SOLUTION**

ONE-STOP SERVICE



True blue



JILIN FOREST SLOW VALLEY TOURIST RESORT

ONE-STOP SERVICE



HUBEI SUIZHOU MOONLIGHT SEA FISHING FIRE CAMPING



KNIFE RABBIT SEA IN YULIN,
SHAANXI PROVINCE



SIHONG COUNTY LIUSHAN LAKE SCENIC SPOT



SICHUAN LIANGSHAN
JINHUI FARM



TONGJIAJIANG TOURIST RESORT, TONGHUA, JILIN

ONE-STOP SERVICE





ONE-STOP SERVICE



20 | 运输方式 | MODE OF TRANSPORT
LUBAN CABIN

备注

安装产品前，客户需按照我司产品标准基础水电图纸，完成给水、给电、排污管线及承重基础的现场工程。在我司技术员的指导下，精准落位到设计的安装点位，接通水电后，完成通水通电测试，交由客户验收。

1

The standard truck is 17.5m long semi-trailer, 3m transport width, transport height no more than 4.2m, can be free to pass the national highway.

2

After the goods arrive at the site, the customer needs to contact the local crane service. Our technical team will arrive at the site in advance for guidance. Lifting weight of 5 to 10 tons, it is recommended to use not less than 25 tons of crane loading and unloading.



SIMPLE SCHEME

The space capsule is placed naked on the frame box, fixed on the frame box with binding tape, binding tape and product contact area padding rubber and felt, the frame box on both sides of the baffle if the distance from the product is too close to place felt, the bottom of the product should be triangular wooden block, and finally cover tarpaulin and net for two times.



CONVENTIONAL SCHEME

The space capsule is placed naked on the frame box, fixed on the frame box with binding tape, binding tape and product contact area padding rubber and felt, the frame box on both sides of the baffle if the distance from the product is too close to place felt, the bottom of the product should be triangular wooden block, and finally cover tarpaulin and net for two times.



HIGH-END SCHEME

When customizing iron frame packing boxes or wooden frame packing boxes, reserve lifting points when wrapping the goods. Do not lift the outer packing directly. When the space capsule is packed, the bottom should be fixed with the bottom support of the packing case, and the forklift fork loading hole (similar to the pallet) is reserved.



SIGNING CEREMONY



SERVED MORE THAN 60+ COUNTRIES

60+

SERVICE CUSTOMERS AS MANY AS 170+

370+

COOPERATIVE
BRAND



COOPERATION PARTNER