

Chassis & Steering			
Front Suspension Type	Mcperson Independent Suspension		
Rear Suspension Type	Trailing arm dependent suspension		
Body Type	Unitary construction body		
Brake System & Wheels			
Front Brake Type	Disc Brake		
Rear Brake Type	Drum Brake		
Parking Brake Type	Hand Brake		
Tyre Size	155/65R13		
Wheel Hub Type	Aluminium alloy		
Safety Configuration & Driving Assistance			
Lock Brake System	ABS		
Brake Assist System	Vacuum Hydraulic Type		
Rear View Camera	●	●	●
Safety Belt	Front/ Rear		
Bumper	Front/ Rear		
Anti-collision Buffer	●	●	●
Side Impact Beam	●	●	●
Danger Alarm	●	●	●
Hand Brake Power Off	●	●	●
Auto Power Off Fully Charge	●	●	●
Overvoltage Protection	●	●	●
Undervoltage Protection	●	●	●
Over current Protection	●	●	●
Overheat Protection	●	●	●
Charging Leakage Protection	●	●	●
Output Short Circuit Protection	●	●	●
Warning Horn	●	●	●
Electric Power Window	●	●	●
Rearview Mirror	●	●	●
Central Lock	●	●	●
Remote Key	●	●	●

Interior Collocation			
Front Seats Headrest	●	●	●
Inner Mirror	●	●	●
Read Lamp	●	●	●
High Speed/Low Speed Mode	●	●	●
Steering Wheel Material	ABS		
LCD Panel	3.5 In	3.5 In	3.5 In
Real-time Status	●	●	●
Seat Material	Fabric Seat		
Front Seats Adjustable	●	●	●
Rear Seats Removable	●	●	●
Big Angle Door Open	●	●	●
Warm Air Glass Defrosting	●	●	●
Sun Shield	●	●	●
Cup Holder	●	●	●
Lamp Configuration			
Daytime Running Lamps	●	●	●
Steering Lamp	●	●	●
Headlamp Adjustment	●	●	●
Clearance Lamp	●	●	●
Combination Headlight	●	●	●
Combination Tail Lamp	●	●	●
Light Combination Switch	●	●	●
Reversing Light	●	●	●
Multimedia & Air-conditioning			
Multimedia Touch Screen	9 Inch	9 Inch	9 Inch
Local Video Player	●	●	●
Local Music Player	●	●	●
Radio	●	●	●
Phone Charging Interface	●	●	●
Bluetooth Music/ Phone	●	●	●
Mobile Internet	●	●	●
Mobile Wifi	●	●	●
12V External Power Supply	●	●	●
Multilingual Menu Operation	●	●	●
Air-conditioning	●	●	●



## Electric Car Picture



Front



Front-left



Side



Side



Rear



Rear-left

## Electric Car Picture



Cockpit



Instrument



Gear Switch



Front Seats



Rear Seats



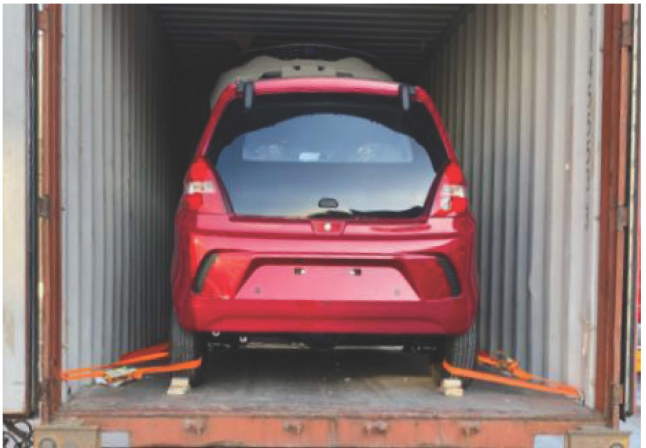
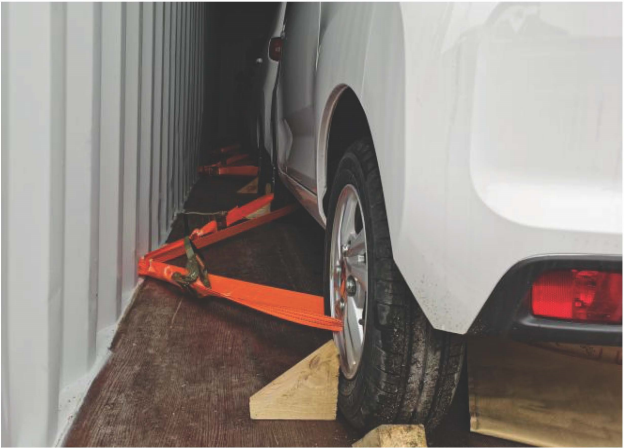
Trunk

## Electric Car Package and Container Loading Solution

LCL (Less Than Container Load)			
<b>Package Size:</b>	3600*1800*1800mm	<b>Gross Weight:</b>	1000 kgs
<b>Package Way</b>	Fixed inside steel frame, then covered with plywood.		



Full Container Loading			
<b>20 ft container</b>	2 pc	<b>40 ft container</b>	4 pcs
<b>Package Way</b>	Fixed by steel frame, then fixed on the container ground with nylon tap		



# NUGGET



# NUGGET

## Electric Car Quotation

**Description: RHD High Speed Electric Car**

**Model: EQ-340**

**2024**

Model	Economic Version	Honour Version	Top Version
Vehicle Body Size L*W*H (mm)	3390*1650*1595		
Wheel Base (mm)	2275		
Wheel Track (mm)	1450/1450		
Climbing Capacity (%)	≤30	≤30	≤30
Ground Clearance (mm)	150		
Maximum Speed (km/h)	100 km/h		
Maximum Traveling Range ( km )	138 KM	175 KM	332 KM
Driver Position	Right Hand Steering		
NO.of Seats	Four seats/ Five doors		
Location of Charging Port	Front Grille,Built in Type		
<b>FOB PRICE</b>			
<b>FOB QINGDAO</b>	<b>US\$9,500.00</b>	<b>US\$10,500.00</b>	<b>US\$11,500.00</b>
<b>Motor Information</b>			
Motor Power (KW)	29 KW	29 KW	29 KW
Motor Type	AC Motor		
Driving Type	FWD		
Peak Torque (N.m)	110 N.m	110 N.m	115 N.m
<b>Battery Information</b>			
Battery Type	Lithium iron phosphate	Lithium iron phosphate	Lithium iron phosphate
Battery Capacity	10.36 KWH	15 KWH	24.3 KWH
Number of Battery	1	1	1
Battery Lifetime(DOD80%)	1600-1800	1600-1800	1600-1800
Normal Charge Times (hr)	6-8	6-8	6-8
Input Voltage (VAC)	220±15%		
<b>Gearbox</b>			
Gear Number	4 (E/D/N/R)		
Gearbox Type	Fixed Gear Ratio		