

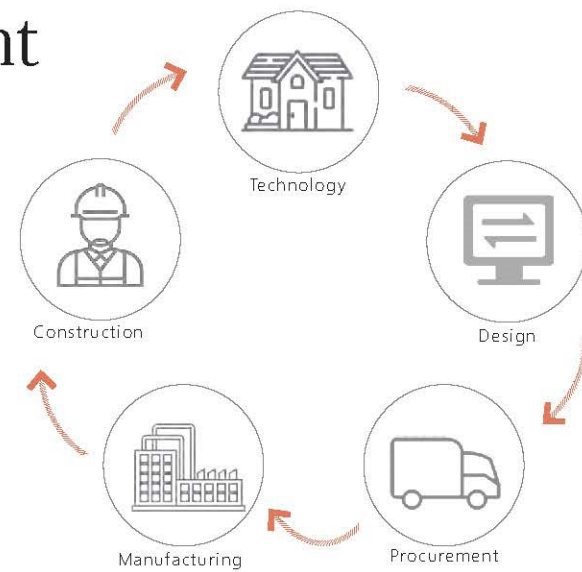


*True Blue*





# Our Approach is Different



## 1. Vertically Integrated

We are fully integrated, providing end-to-end building services as a single partner, with robust technology systems connecting

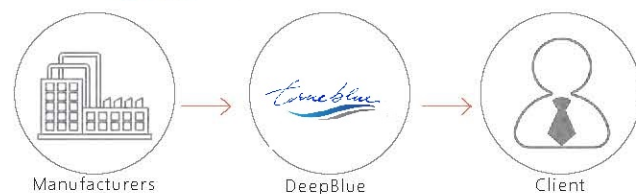
## 2. Cost-effective Supply Chain

We have built a Cost-effective supply chain of curated, high-quality products, eliminating middlemen and passing on the savings directly to our customers.

Without *time blue*



With *time blue*



## 3. Professional factory

Our factory is professional and efficient, offering greater precision, higher productivity, and more quality control.



### Benefits

Increased Labor Productivity

Improved Jobsite Efficiency

Less Waste

Quality Control

Highly Skilled Workforce

Advanced Technology

# Integrated Services

*time blue* is an end-to-end building services provider. As a full-service partner for developers and architects, we can provide everything you need to deliver the highest quality building projects.



## Light steel framing

*time blue* is developing a catalog of light steel framing products, representing the next generation of high performance building technology. Designed for residential and commercial building projects, *time blue* light steel framing solution includes structural engineering, manufacturing and supply of building materials package, meet the requirements of various building projects.



## Kitchen & Bath

*time blue* offers elegant kitchen and bath solutions, a thoughtfully curated catalog of products from sleek faucets and sinks to custom cabinets and countertops that combine functional ease with sophisticated, timeless design.



## Finish Items

Floor to ceiling, inside and out, *time blue* provide the highest quality materials for every aspect of your interior and exterior finish needs. Across every product category in our curated catalog of finish items, we are able to offer extremely competitive pricing, thanks to our ability to aggregate demand for all of our clients and projects.



# Virtual Design and Construction (VDC)

we believe in an integrated and collaborative project delivery approach, utilizing the Virtual Design and Construction (VDC) process and Building Information Modeling (BIM) as Lean tools to deliver a safe, cost-effective, timely, and complete project. Deepblue is unique in that we create a Single Source of Truth Model (SSTM) for each of our projects, populated by BIM information as early as the Civil, Structural and Landscaping phases. This ensures complete co-ordination at the earliest stages and prevents costly schedule disruptions. Through a transparent, collaborative approach, we can lower the costs of project delivery while increasing efficiency and profitability for our partners.

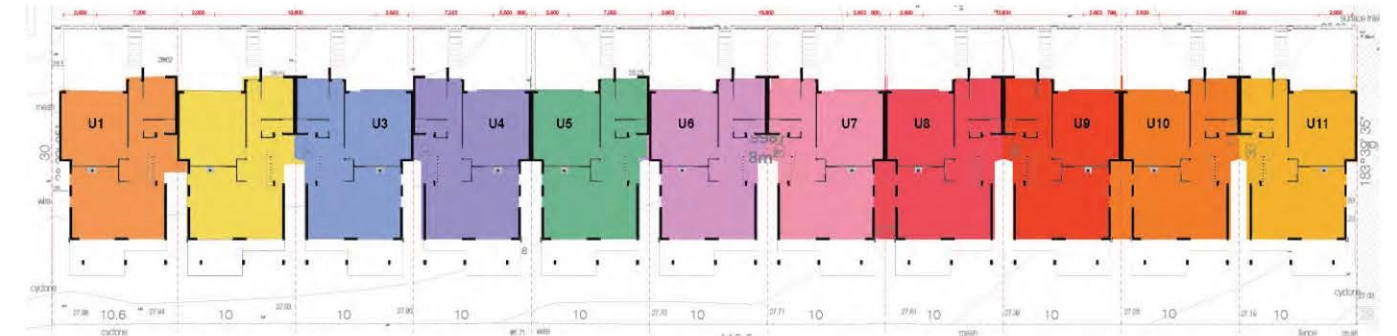
Our five main goals are:

1. Use BIM to Virtually construct the building in its entirety - Enable Clash Detection.
2. Create a Collaborative Environment based on a Common Platform – Reduce RFI's.
3. Manage Change - Minimize Schedule Impacts.
4. Manage Construction Documents – Reduce Costs.
5. Minimize Risk Exposure – Increase Safety.



# Block Scheduling

we have developed a scheduling system internally known as the "Block Schedule" to allow us to maintain trade flow, minimize crew sizes, and identify with certainty the end date of the project. Our project team will work closely with all trades to develop a 5-day work plan, sequencing workflow to produce a predictable production rate with known manpower while days 6 and 7 are used to adjust to stay on schedule.



Key goals of our Block Schedule approach include: building in its entirety - Enable Clash Detection

Prevent schedule disruption and sub-trade bottlenecks through dynamic scheduling

Create predictable outcomes by basing production rates on known man-power

Maximize productivity by continuous communication on a common platform with all trades



# Light Steel Framed Multifamily

Our construction team’s deep experience across a wide variety of markets, combined with our unique approach means that we can provide greater assurance and transparency from feasibility and design all the way through project completion.



## Brisbane Project

53 units 3-story townhouses in Brisbane  
 Nestled in the vibrant, leafy, exclusive riverside suburb of Bulimba, this boutique address comprises 53 spacious 3 beds, two or 3 baths, 2 or 3 storey freehold terrace homes, all with multiple baths and powder room, private balconies, courtyards and secure private garages.

Project info	
Light Steel Frame System	53sets 3storeyes Townhouses
Brisbane, Australia	Over 10000sqm



## Kirrawee Project

9 luxury townhouses in Kirrawee  
 Introducing Kirrawee's newest development, 9 luxury townhouses. The stylish lifestyle which boasts an easy living, security, and convenience. This project offers three-bedroom townhouses. This development is set to be the future of easy-care living.

Project info	
Light Steel Frame System	9 sets luxury townhouses
Kirrawee, Australia	1073 sqm



## Grace House

10 townhouses and villas in Sydney  
 Positioned at Sydney, a brand-new row of boutique, elegantly designed terraces. Spread across two spacious levels, with growing and multi-generational families in mind, this designer home has been finished to exacting standards to provide the quintessential urban retreat.

Project info	
Light Steel Frame System	10 townhouses and villas
Sydney, Australia	1994 sqm





## Jordan Spring

11 townhouses in Jordan spring

Sat in Jordan Spring near a lake. When you stand in such a big opening balcony, you will be surrounded by nature. Deepblue light steel system kept both design aesthetic and strength of structure, and effectively protected the house from getting damp.

### Project info

Light Steel Frame System	11 townhouses
Australia	Over 12000sqm



## Belle House

Belle house is located on a mountain, with the complex foundation and structure. It is almost impossible to achieve using timber frame or concrete. But we did it, Deepblue converted it to steel design and optimized our plan, saving an estimated 4-6 weeks on the structural element of the build. The customer initially wanted the area in concrete but couldn't find a solution. Finally Deepblue worked it.

### Project info

Light Steel Frame System	1 set luxury villa
Sydney, Australia	450 sqm



## Maldives Project

Resort project in Maldives

This resort project in Maldives, consists of hotels, function houses, etc. Deepblue Smarthouse Prefabricated steel framing is quickly becoming the preferred building method among the world's leading owner/developers and construction firms.

### Project info

Light Steel Frame System	Hotel project
Maldives	711 sqm



## Villawood

200 townhouses in Villawood

Located in Villawood, your 2-stories house has an open living room, a guest bedroom and access to the backyard, you'll find more rooms upstairs.

Deepblue light steel system helps you find an economic and fast way to build such a large project.

### Project info

Light Steel Frame System	200 townhouses
Australia	Over 50000sqm



## Bazzurro House

Luxury villa-Bazzurro House in Uruguay

A luxury villa, located in Uruguay was designed by local famous architect. Deepblue light steel system supplied a strong support for the freedom of design. High ceiling, large span, big windows all can be achieved by our system.

### Project info

Light Steel Frame System	1 set luxury Villa
Uruguay	350 sqm



## Giorgetti House

The Giorgetti House is the perfect house design, big on space even when placed on a 'not so big' block. With a range of upstairs floor plans, this home will cater to your needs, whether you want a hotel-style master suite to chill out in or an extra bedroom to give your family room to grow.

### Project info

Light Steel Frame System	1 set villa
Uruguay	263 sqm





## Gandario House-E3 & E4

This light steel villa house has a new modern design,, two floors with bedroom, kitchen, bathroom, and living room. Comfortable living environment, suitable for family living and home stay. Reasonable space design ensures high room utilization, providing a comfortable and convenient living environment.

### Project info

Light Steel Frame System	2 sets luxury Villas
Uruguay	224 & 241 sqm



## Eolo House

The villa was built halfway up a mountain, and the foundation of the villa was supported by a chassis. The space between the chassis and the hillside formed a room that could be used as a garage, enough to accommodate 3 cars. The ground floor has 2 bedrooms with 2 bathrooms, 1 living room, 1 kitchen, and a large gazebo.

### Project info

Light Steel Frame System	1 set luxury Villa
Uruguay	260 sqm



## Olivos House

The Olivos House is the perfect house design, big on space even when placed on a 'not so big' block. With a range of upstairs floor plans, this home will cater to your needs, whether you want a hotel-style master suite to chill out in or an extra bedroom to give your family room to grow. Flexible floor plans with multiple layout options to suit your family.

### Project info

Light Steel Frame System	Hotel project
Uruguay	228 sqm



## M16 Malaparte House

The simple design makes the whole house look very modern and blend in with its surroundings. The ground floor configuration can meet all your daily needs, having 2 bedrooms with 2 bathrooms, 1 living room, 1 kitchen and a garage. The second floor is 2 bed room with 2 bathrooms and 2 large open air balcony.

### Project info

Light Steel Frame System	1 set luxury Villa
Uruguay	170 sqm



## Sun Rafael House

Luxury villa-Sun.rafael.house in Uruguay

The simple design makes the whole house look very modern and blend in with its surroundings.

With five oversized bedrooms and, there's room for the extended family to stay over.

### Project info

Light Steel Frame System	1 set luxury Villa
Uruguay	222 sqm



## Lopez House

The Lopez House is a natural retreat within a block home design. The open plan living areas create a sense of space and light, and the second story gives the family a secluded place to unwind.

Designed fit perfectly on a wide narrow lot, Enjoy time to yourself in the dedicated second-floor leisure spaces

### Project info

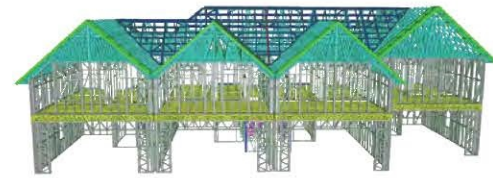
Light Steel Frame System	1 set villa
Uruguay	245 sqm





## Ascot Townhouse

Comprising a total of four townhouses, this project offers a collective living space of 382 sqm, providing an optimal balance of comfort and sophistication. DeepBlue, a trusted name in the industry, ensures the highest standards of design and construction.



### Project info

Light Steel Frame System	4 units townhouses
Ascot UK	382 sqm

## Saint Lucia Villa

Experience luxury at its finest with the Saint Lucia Villa—a harmonious blend of sophistication and functionality. This meticulously designed residence spans 310 square meters across two floors. The ground floor, covering 125 square meters, features a spacious living area, a well-appointed kitchen, and a bedroom with an attached bathroom.



### Project info

Light Steel Frame System	1 set luxury Villa
Saint Lucia	310 sqm

## Sydney House

The Sydney House offering a total of 385.6 Sqm of living space. The ground floor spans 215.6 Sqm, hosting a spacious living area, a state-of-the-art kitchen, and multiple bedrooms and baths. The first floor, covering 170 Sqm, is dedicated to additional bedrooms and bathrooms, ensuring ample privacy and comfort for all residents.



### Project info

Light Steel Frame System	1 set luxury Villa
Sydney, Australia	385.6 sqm

## Preston TownHouse

Introducing DeepBlue's Preston Townhouse – a premier residential development located in the heart of Australia. Comprising seven sets of three-floor townhouses, this meticulously designed project spans an impressive 1091 square meters, offering a harmonious blend of contemporary architecture and functional living spaces.



### Project info

Light Steel Frame System	4 units 3 floors Townhouses
Preston, Australia	1091 sqm

## Pakenham Townhouse

DeepBlue Smarthouse presents a sophisticated residential project in Melbourne, Australia, spanning 2387 square meters. The nine contemporary townhouses, spread across three floors, seamlessly blend modern design with functional living in the vibrant city.



### Project info

Light Steel Frame System	9 units 3 floors Townhouses
Australia Melbourne	2387 sqm

## Dalhart House

Featuring 4 bedrooms, 1 spacious living area, 1 fully equipped kitchen, 3 well-appointed bathrooms, and a convenient garage, the Dalhart House offers a harmonious blend of comfort and style. The project is scheduled for completion in June 2023 by DEEP BLUE.



### Project info

Light Steel Frame System	One-story mansion
Dalhart TX,USA	347 sqm



## Cider Box

Name:Cider Box Tiny House

Total area: 27.58sqm

External size: 2.35\*7.4m

Internal size: 2.08\*7.05m

Total weight: 3.5 tons

Hight: < 4m

### Project info

Light Steel Frame System

Germany

2 Bedroom Tiny House

27.58 sqm



## Orlando

Name: Orlando Tiny House

Total area: 25.22sqm

External size: 2.35\*7.4m

Internal size: 2.08\*7.05m

Total weight: 3.5 tons

Hight: < 4m

### Project info

Light Steel Frame System

Australia

1 Bedroom Tiny House

25.22 sqm



## Odessy

Name:Odessy Tiny House

Total area: 26.42sqm

External size: 2.35\*7.4m

Internal size: 2.08\*6.48m

Total weight: 3.5 tons

Hight: < 4m

### Project info

Light Steel Frame System

New Zealand

1 Bedroom Tiny House

26.42 sqm



## Florida

Name: Florida Tiny House

Total area: 27.1sqm

External size: 2.35\*7.4m

Internal size: 2.08\*6.4m

Total weight:3.5 tons

Hight: < 4m

### Project info

Light Steel Frame System

New Zealand

3 Bedroom Tiny House

27.1 sqm



## Shangri-La

Name:Shangri-La Tiny House

Total area: 24.33sqm

External size: 2.35\*7.4m

Internal size: 2.08\*7.05m

Total weight: 3.5 tons

Hight: < 4m

### Project info

Light Steel Frame System

Australia

2 Bedroom Tiny House

24.33 sqm



## Lecco

Name: Lecco Tiny House

Total area: 28sqm

External size: 2.35\*7.4m

Internal size: 2.1\*7m

Total weight: 4.2 tons

Hight: < 4.2m

### Project info

Light Steel Frame System

Australia

2 Bedroom Tiny House

28 sqm





## Foldable House Phoenix House

Name: Phoenix House  
Size: 11.56×5.2m  
Area: 60.1sqm  
Deck area: 35sqm

### Project info

Light Steel Frame System  
Australia  
Foldable House  
60.1 sqm



## Foldable House 802

Model: Zenith House  
Size: 3.4x10.8m  
Area: 36.6sqm

### Project info

Light Steel Frame System  
USA  
Foldable House  
36.6 sqm



## Foldable House 806

Model: Hollie House  
Size: 5.8x3m  
Area: 17.4sqm  
Deck: 11.6sqm

### Project info

Light Steel Frame System  
Australia  
Foldable House  
17.4 sqm



## Foldable House 2117

Model: Vincent House  
Size : 10x4m  
Area : 40sqm

### Project info

Light Steel Frame System  
New Zealand  
Foldable House  
40sqm



## Foldable House 2222

Model: Vera House  
Size : 10x6.4m  
Area : 64sqm  
Deck area: 30sqm

### Project info

Light Steel Frame System  
Australia  
Foldable House  
64 sqm



## Foldable House 735

Model: Lucas House  
Size : 3.45x7.95m  
Area: 27.43sqm  
Deck: 4.14sqm

### Project info

Light Steel Frame System  
Australia  
Foldable House  
27.43 sqm

