

True Blue

CHAIN AUTO
ASSEMBLY



SCOLECITE FUEL CAR FACTORY

Welding
Line



Assembly
Line



Painting
Line





RUIYUE AUTOMOTIVE PARTS FACTORY



造型 Modelling				模具 Stamping die 								
	创意设计 creative design	数字化 digitization	油泥制作 clay model	冲压SE分析 Press SE analyze	3D 设计 3D design	CAE 分析 CAE analysis	CNC 编程 CNC program	2D 设计 2D design				
工程 Engineering							夹具及自动化 Jig&Automation 					
	总布置 General layout	车身 Auto body	饰件 Trim	底盘 Chassis	电器 Electric appliance	CAE仿真 CAE simulation	焊接SE分析 Welding SE analysis	3D 设计 3D design	3D 仿真 3D simulation	电气设计 Electrical design	2D 设计 2D design	
							检具 Check fixture					



Pickup SUV CKD assembly line



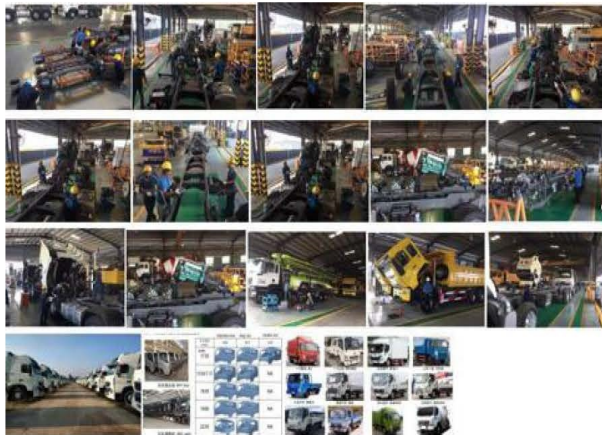
Saloon, Pickup/SUV CKD assembly Line



Electric Buses line in Mongolia



Heavy trucks SKD production line



City Buses CKD assembly line



Saloon and SUV SKD Line



AUE Dubai Electric Car Plant SKD Assembly Line



Now, Some chain auto factory project is being build: Rwanda, Zambia, Kazakhstan....,

Relevant background information: Due to the continuous improvement of Chinese automobile technology and fierce market competition, many famous brands of automobiles in developed countries have closed down and left the Chinese market, including Japan's Suzuki, Mitsubishi, Mazda, France's Lejo, Citroen, and South Korea's Hyundai Motor.

Our Group Next Step Plan:

With the support of the Chinese government's China-Africa Belt and Road strategy, the blessing of the China Africa Fund, and the experience of previous successful projects, we will speed up the layout of overseas chain automobile factories, and the next target market: **the northern market, the East African market, the South Asian and Southeast Asian markets, the Latin American market, the European market.**



EV-Q2



Basic Info	Diemensions	3840×1742×1545
	Power Type	Pure Electric Driving
	Top Speed	130km/h
	Top Range	300-400km
Motor and Battery	Transmission	EV single gear
	Motor Model	PMSM
	Max. Power	55-80kw
	Max. Torque	120-160N.m
	Battery Type	Lithium iron phosphate
Other	Battery Capacity	30-40Kwh
	Airbags	Dual
	ABS	with
	ESC	-
	Parking Radar	with
	Central Screen	with
	A/C	Manual
Phone Interactive Function	with	

EV- TANGOO 05



Basic Info	Diemensions	4572x1825x1496
	Power Type	Pure Electric Driving
	Top Speed	150km/h
	Top Range	400km
	Transmission	EV single gear
Motor and Battery	Motor Model	PMSM
	Max. Power	120kw
	Max. Torque	250N.m
	Battery Type	Tenary Lithium
	Battery Capacity	5.4 Kwh
Other	Airbags	Dual
	ABS	with
	ESC	with
	Parking Radar	with
	Central Screen	optional
	A/C	manual
	Phone Interactive Function	optional



EV-A06



Basic Info	Dimensions	4965* 1920* 1520
	Power Type	Pure Electric Driving
	Top Speed	150-170km/h
	Top Range	550-630km
	Transmission	EV single gear
Motor and Battery	Motor Model	PMSM
	Max. Power	135-160-180-340kw
	Max. Torque	225-300-534N.m
	Battery Type	Ternary Lithium
	Battery Capacity	63-71Kwh
Other	Airbags	Front Dual+Curtain Airbag
	ABS	with
	ESC	with
	Parking Radar	with
	Central Screen	14.6" touch LCD
	A/C	Auto
	Phone Interactive Function	with



EV-YOUNG



Basic Info	Diemensions	3740 * 1655 * 1550
	Power Type	Pure Electric Driving
	Top Speed	100km/h
	Top Range	402km
Motor and Battery	Transmission	EV single gear
	Motor Model	PMSM
	Max. Power	35kw
	Max. Torque	125N.m
	Battery Type	Lithium iron phosphate battery
Other	Battery Capacity	35.544kwh
	Airbags	Front Dual
	ABS	with
	ESC	with
	Parking Radar	with
	Central Screen	10" touch LCD
	A/C	Electric
Phone Interactive Function	with	

EV-Z03



Basic Info	Dimensions	4602* 1900* 1645
	Power Type	Pure Electric Driving
	Top Speed	150-170km/h
	Top Range	550-630km
	Transmission	EV single gear
Motor and Battery	Motor Model	PMSM
	Max. Power	135-160kw
	Max. Torque	225 N.m
	Battery Type	Lithium iron phosphate battery
	Battery Capacity	55-64-76kwh
Other	Airbags	Front Dual
	ABS	with
	ESC	with
	Parking Radar	with
	Central Screen	14.6" touch LCD
	A/C	Auto
	Phone Interactive Function	with

ELECTRIC SOLAR CAR

Electric Solar Car S3



Basic Info	Dimensions	3068*1498*1513
	Power Type	Electric Solar Driving
	Top Speed	90 km/h
	Top Range	251/351km
Motor and Battery	Transmission	EV single gear
	Motor Model	PMSM
	Max. Power	25kw
	Max. Torque	110N.m
	Battery Type	Lithium iron phosphate battery
Solar power system	Battery Capacity	20-28Kwh
	Solar type	Flexible monocrystalline silicon
	Solar panel power (W)	300
	Controller type	MPPT
	Output voltage (V)	96V
	LIGHT FOR 6-8 HOURS	increase 30-50km range

ELECTRIC SOLAR CAR

Electric Solar Car
S8



Basic Info	Dimensions	3998*1630*1520
	Power Type	Electric Solar Driving
	Top Speed	100 km/h
	Top Range	300/400 km
Motor and Battery	Transmission	EV single gear
	Motor Model	PMSM
	Max. Power	29kw
	Max. Torque	132N.m
Solar power system	Battery Type	Lithium iron phosphate battery
	Battery Capacity	23-28.8kwh
	Solar type	Flexible monocrystalline silicon
	Solar panel power (W)	300
	Controller type	MPPT
	Output voltage (V)	96V
	LIGHT FOR 6-8 HOURS	increase 30-50km range

ELECTRIC VAN

EV- HIACE VAN



Length/Width/Height (mm)	4900/5330x1700x2050/2250	Driving Motor	PMSM,50/80(rated/Max. power)
Wheelbase (mm)	2890	Battery	Li (LiFePO4) 49.87kwh
Gross weight/Curb weight (kg)	3450/2050, 11-15seats	speed	100km/h
Chassis	Monocoque body	range	200-250km

ELECTRIC VAN

Electric Van



Length/Width/Height (mm)	5100x1685x1998	Driving Motor	PMSM,30/60(rated/Max. power)
Wheelbase (mm)	3280	Battery	Li (LiFePO4) 38.7kwh
Curb weight (kg)	1630, 11-14seats	speed	100km/h
Chassis	Monocoque body	range	200km

ELECTRIC TRUCK

Electric Truck



NEW CHAPTER-VEHICLE PROJECT COOPERATION

◇ Management Support

◇ Technology Support

◇ Sale Market Support



Automobile technologies have improved greatly in China in the last decade. Auto output was over 26 million units in 2013, while domestic demand is only about 8 million units. This huge discrepancy between supply and demand opens up the market of setting up oversea auto assembly plants by domestic manufacturers. Chinese government encourages Chinese enterprises to open up oversea markets and to increase oversea investments by offering favorable policies since China has been the first auto manufacturer in the world. The board of directors of our group has made a strategic decision of building up 10 more auto factories throughout the world in the future.

Up to now, in Africa, three auto assembly plants have been arranged, which were located in east Africa, West Africa and North Africa respectively. Our investment of each factory was up to 1 to 2 million USD, which will be invested into the projects step by step. At the same time, China Development Bank and China Import & Export bank have showed interest in our business plans, which is a boost in confidence for us to carry on with our projects. If you are looking for a chance to invest in auto manufacturing or related areas, then don't miss it!

We invest technologies and equipment, while our partners provide lands, workshops, funds, management and marketing.

- 1. Offering you an easy and quick approach to entering automobile industry**
- 2. Assembling vehicles using KD parts to save cost.**
- 3. Our professional team prepares architectural design and assembly design based on the end products our partners choose.**
- 4. Our engineers provide job training and technical service on site.**
- 5. Quality control system makes sure vehicles come off our assembly lines get universal quality**



Customized Design Assembly Line

Manual



Slow



Economic



Semi-Auto



Faster



Expensive



Fully Automatic



Fastest



Sky-High



Completely Built Units

CBU



Semi-knocked-down parts. Car bodies are unpainted. Engines, gearboxes, axles and other components are supplied as individual units for assembly

SKD I



Semi-knocked-down parts. Car body is fully painted and glazed.
Engines, gearboxes, axles and other components are supplied as individual units for assembly

SKD II



Complete knocked-down. All materials are supplied loosely for final welding and final assembly, or raw body shell and all other parts are supplied loose and not assembled

CKD



SKD

Painting

Assembly

Inspection

CKD

Welding

Painting

Assembly

Inspection

**Over
1 Million
USD**

FUNDS

**Over
15,000 m²**

LANDS

**Over
30%**

**Tax gap between
CBU and KD**

**Market
channels**

**Car-sale channels or workshop for re-manufacturing
second-hand cars, or other car related businesses**

Note: We propose starting from trading first, then move to assembly plant later in our cooperation if your company doesn't meet above conditions

Tariff Gap

Import tariff gap between KD and CBU would be totally translated to profit.

Competitive

Auto technologies in China have improved greatly in the last decade.

Cheap

Components and parts from China are much cheaper than western counterparts

After-sale Service

Easier access to spare parts and technologies than selling CBU

Low Initial Investment

Starting from SKD with only assembly line for only 1 million USD

Assembly Line Share Solutions

Line A



Mini Truck≤5T



SUV



Pickup

Welding Line 1

Welding Line 2 Share

Painting Line Share

Assembling Line Share

Testing Line Share

Assembly Finished

Line B



Coach/City Bus



Dump Truck

Welding Line 3

Welding Line 4

Painting Line Share

Assembling Line Share

Testing Line Share

Assembly Finished

Line C



Sedan



Van



SUV

Welding Line 5

Welding Line 6

Welding Line 7

Painting Line Share

Assembling Line Share

Testing Line Share

Assembly Finished

HISTORY

Plant in operation



NORTH KOREA

2008

SYRIA

2009

OVERSEAS ASSEMBLY PLANT

Plant in operation



EGYPT

2010

VIETNAM

2011

OVERSEAS ASSEMBLY PLANT

Plant in operation



GHANA

2012



NIGERIA

2013

OVERSEAS ASSEMBLY PLANT

Plant in operation



ANGOLA

2014

Togo

2015

2014
|
2018



Mozambique



Mongolia



Pakistan

2019

Brazil

Under Construction

THE
FUTURE

India, Bangladesh, Philippines, Egypt, Algeria,
Ethiopia, Sri Lanka, Cote d'Ivoire, Congo.....



Factory Management



Build Chain 4S Store

Contact us for more about:

1. Design of Factory Production Line,
2. Equipment Supply of Auto Production Line,
3. Technology Support, Guidance and Transfer of the Auto Assembling & Production,
4. Staff Training,
5. Automobile Production Management.

List of Oversea Auto Assembly Plant :

- 1, Syria A & B auto plant;
- 2, Ghana MKC Auto Co., Ltd;
- 3, Nigeria Auto Manufacture Co., Ltd;
- 4, Eastern Africa Vehicle Co., Ltd;
- 5, Pakistan Topsun Motor Co., Ltd;
- 6, East Africa Auto Co., Ltd;
- 7, Latin RWM Auto Co., Ltd;
- 8, Mongolia Taye Auto Co. Ltd;

True Blue

The logo for 'True Blue' features the words 'True Blue' in a blue, cursive script font. Below the text is a stylized blue wave graphic with a white shadow underneath.

Thank You