

# FOLDABLE CONTAINER HOUSE

One-stop supplier of prefabricated buildings

- Folding container
- Flat-pack container
- Detachable container
- Expandable container
- Supporting products



**EVERYTHING  
UNDER THE SUN**

Trading Internationally since 1980



# Products

Container house is a kind of modular house, consisting of light steel frame and thermal insulation material. As a new type of energy conservation and environment protection house which is easy and convenient to install.

With the advantages of folding, light weight, durable and taking less time to assemble and disassemble, foldable container house have a wide range of application, could be used as office, dormitory, shop, news stall, temp headquarter, grocery shop, school, hospital, toilet, temporary building for disaster-resistance rescue, etc



Efficient and Convenient



High Comfort



High Security



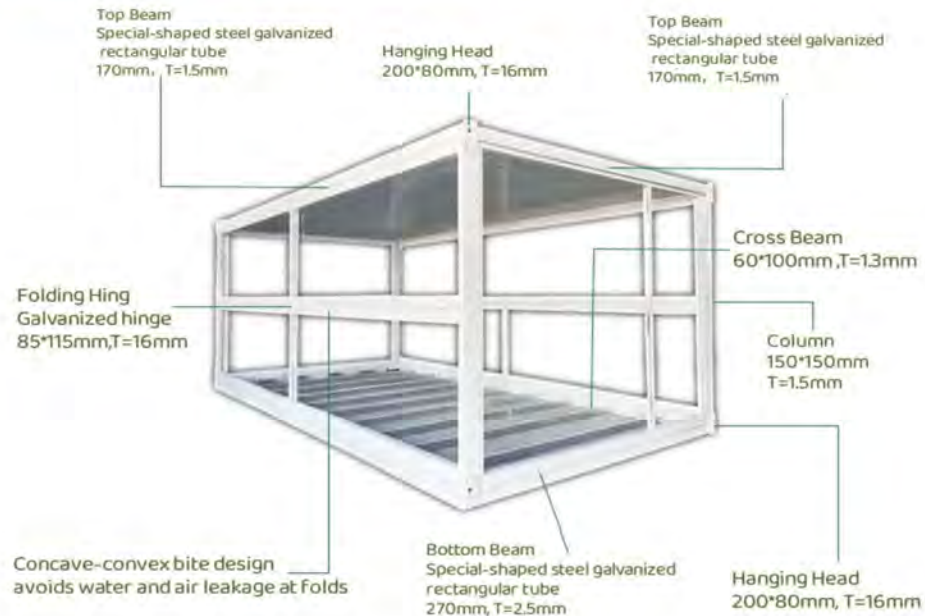
High Durability

# Foldable Container House



**EVERYTHING  
UNDER THE SUN**

**Folding container size: 5800mm\*2500mm\*2560mm**



Only 3 Minutes

- ◆ Easy Installation, 3 Steps 2 People + 3 Minutes = 1 House
- ◆ Saving Man-Hour: Only One Crane or Forklift And Two Assistants Needed
- ◆ Only Flat And Firm Ground Needed Not Necessary To Do Foundation





The height of the base is 27 cm, the width of the top beam is 17 cm, and the width of the column is 15 cm

The dead weight of the folding frame is 650kg, the special-shaped material at the bottom of the folding box is full 2.5 thickness, the column and the special-shaped pipe of the top beam are all formed by high-frequency welding equipment in one time, mutual interlocking, multi-sided force, and enhance the strength.



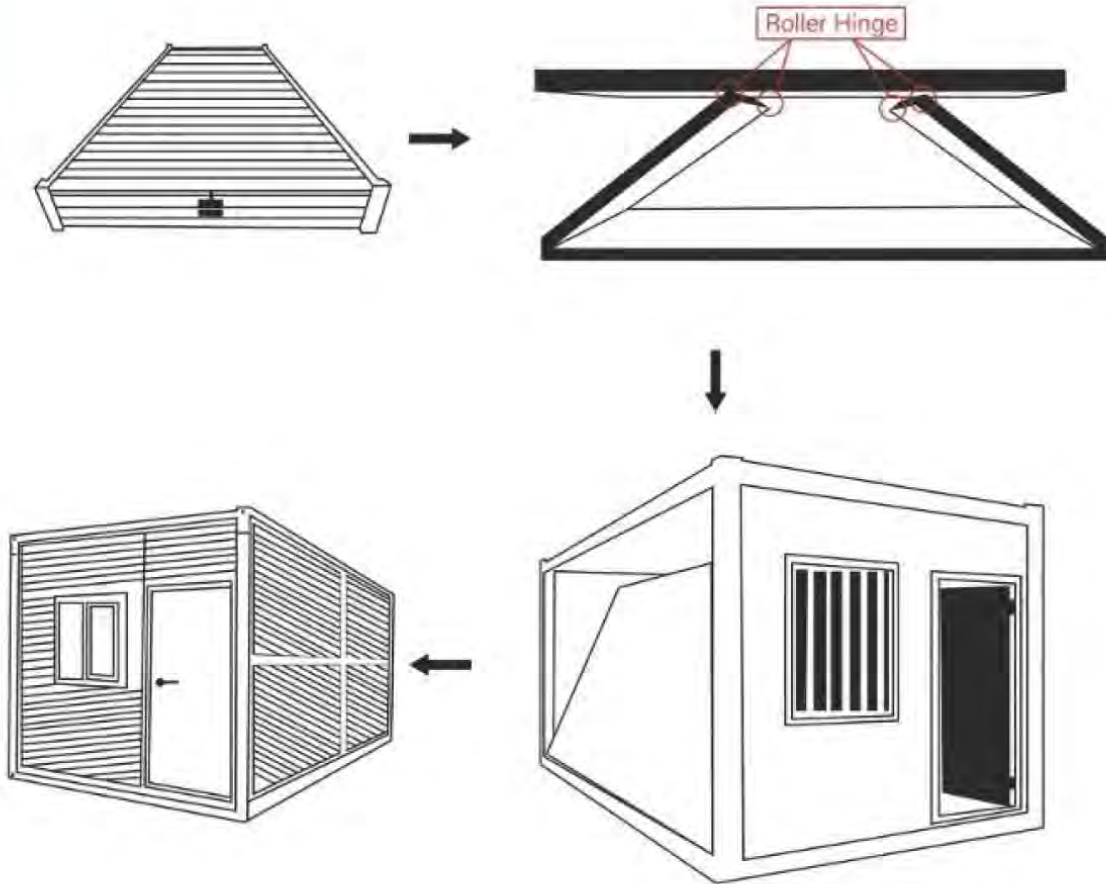
— **Heat insulation rock wool  
color steel composite  
sandwich panel (side wall)**

**0.326mm color steel plate / 50mm /  
65kg / m<sup>3</sup> rock wool**

— **Grade A fireproof glass  
magnesium plate**

**15mm**

# Flat Pack Folding Container House

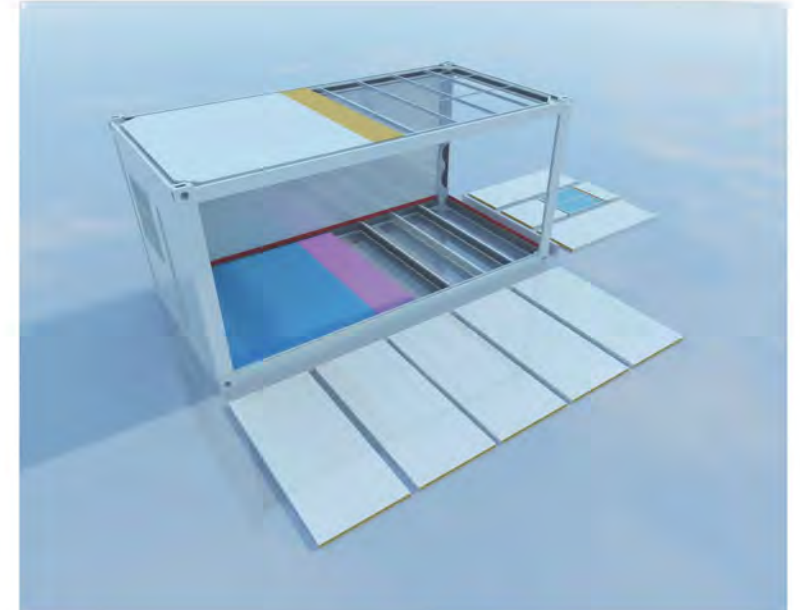
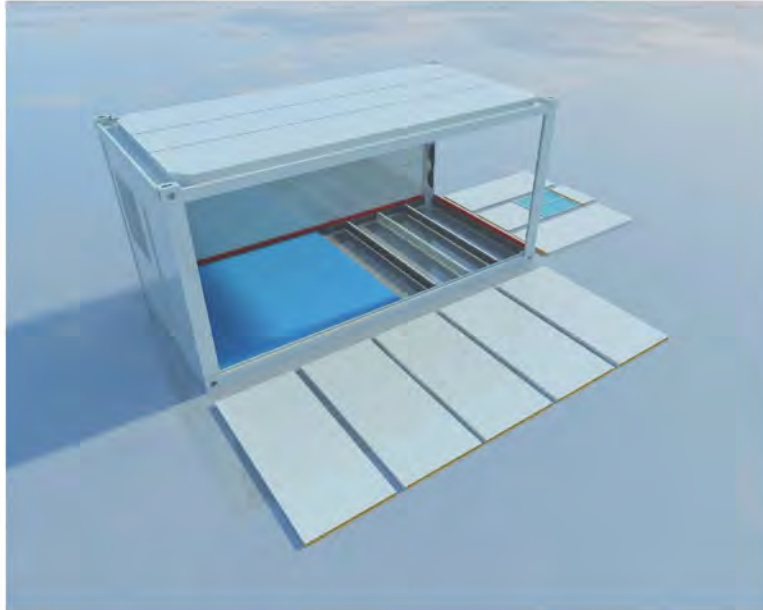
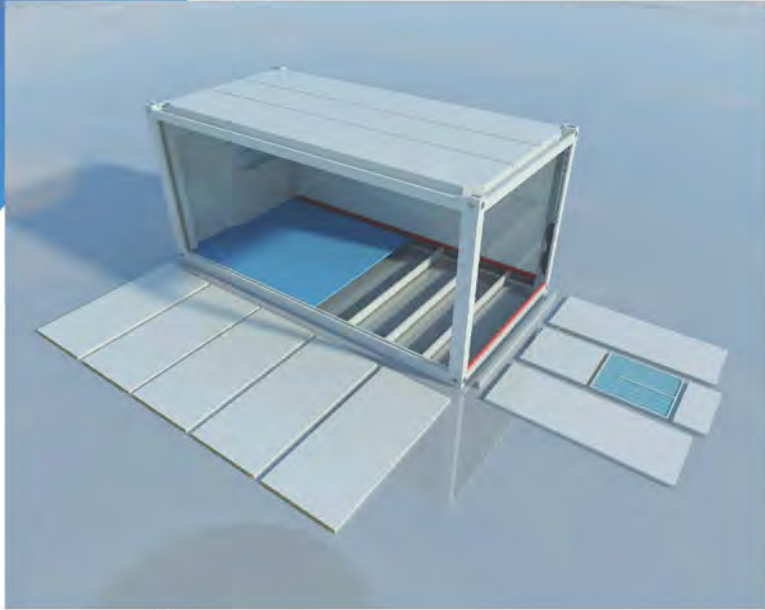


Only 3 Minutes

- ◆ Easy Installation, 3 Steps 2 People + 3 Minutes = 1 House
- ◆ Saving Man-Hour: Only One Crane or Forklift And Two Assistants Needed
- ◆ Only Flat And Firm Ground Needed  
Not Necessary To Do Foundation

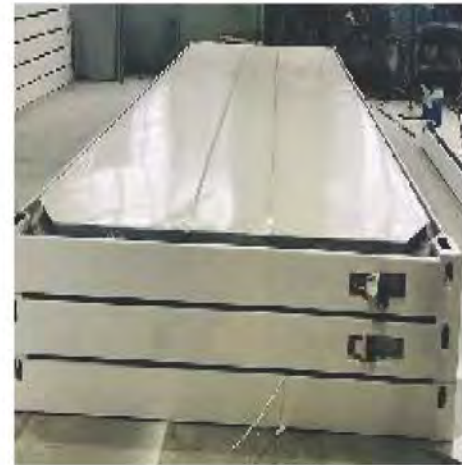
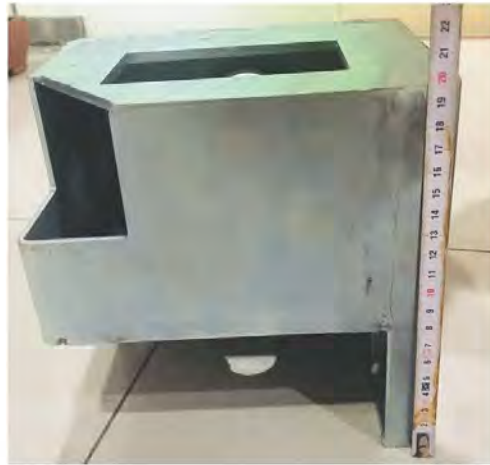
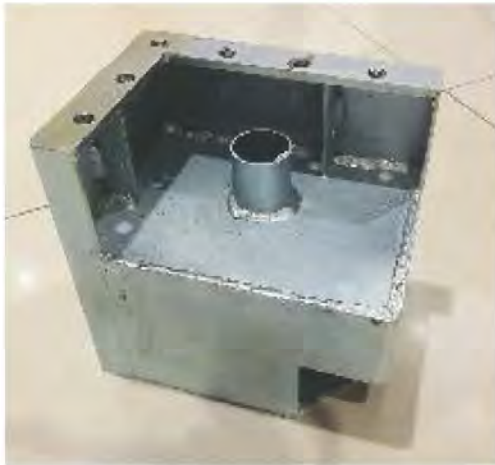
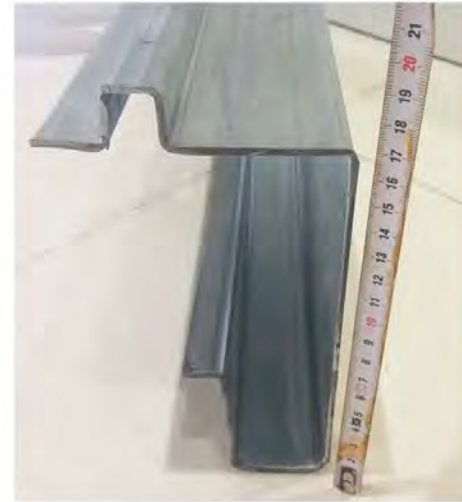


# Flat Pack Container House



The flat pack container house is a steel frame structure, and the steel is made of cold-formed galvanized material. The structure consists of top frame components, corner column systems, and bottom components. Each system module is manufactured in the factory and assembled on-site

Based on the standard box as the basic unit, it can be freely combined horizontally or vertically in various forms like building blocks. It can be stacked in three layers, with flexible space and prefabricated functions, achieving diversified functions.

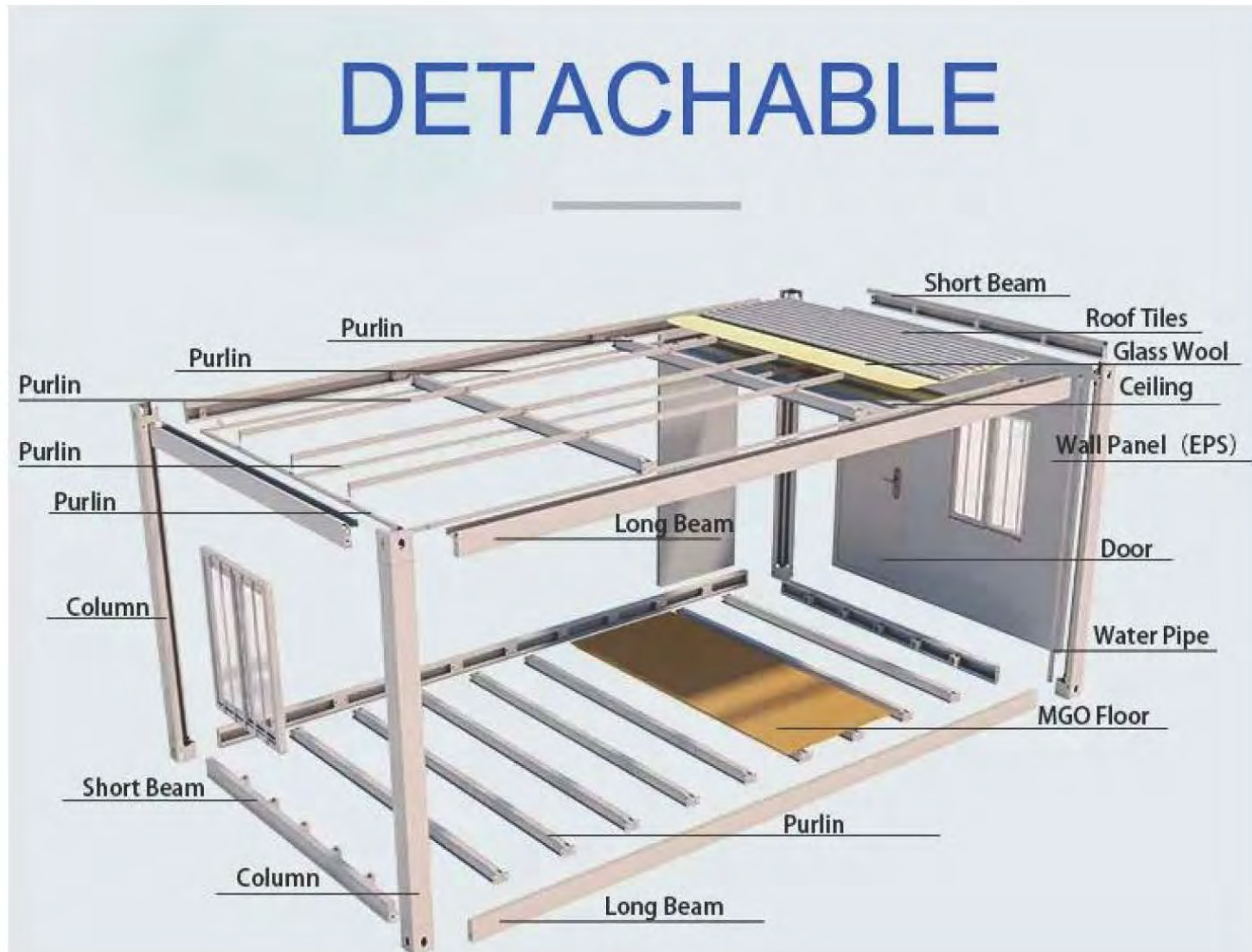


Column with built-in screws: 150 × 210 galvanized anisotropic steel  
The lower beam is a interlocking stepped structure: 170 × 2690 galvanized special shaped steel  
Upper beam with built-in drainage structure: 180 × 5630 galvanized special shaped steel  
Upper and lower corners: 5.0 thick hot-dip galvanized electroplating process, all laser cutting, accurate



# Detachable Container House

## DETACHABLE



# Advantage of Container House

---

## Quick installation

It can be quickly installed and disassembled, or it can be moved after assembly, which is convenient and fast, disassembled and recyclable, no construction waste is generated, environmentally friendly and durable

## Flexible combination

It can be used as a single container, can be combined into a large open space, and can be stacked up to 3 layers.

## Complete supporting facilities

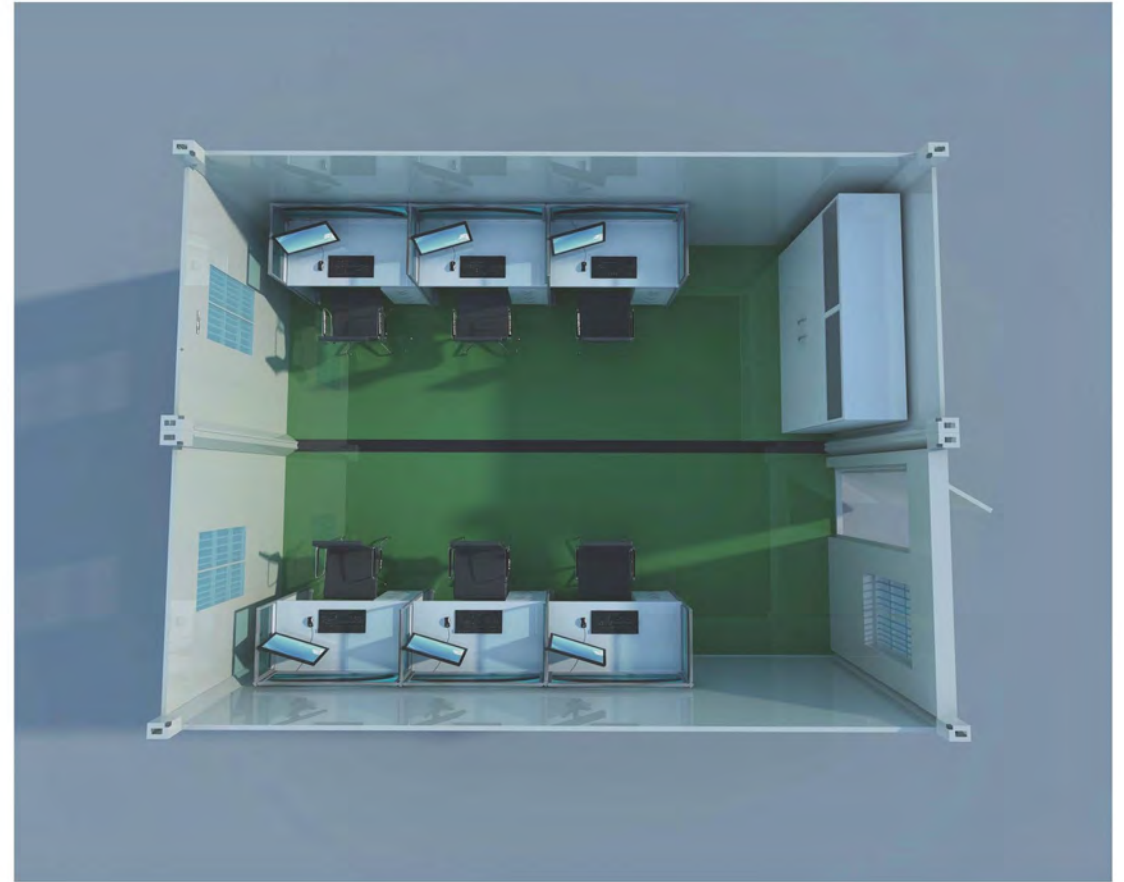
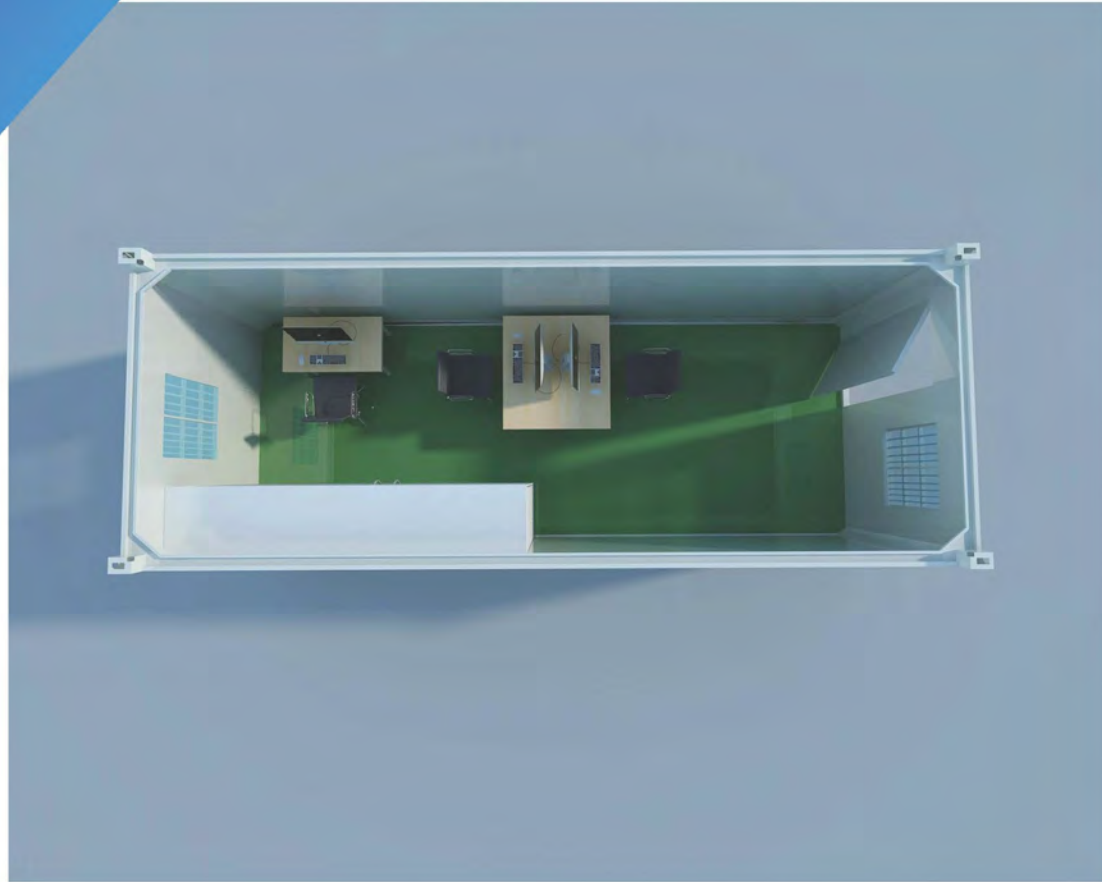
The modular design can be matched with accessories of different shapes. Roofs, corridors, stairs, glass curtain walls, balconies, kitchens and bathrooms, etc. can be flexibly combined according to needs, and the appearance and interior can be decorated according to needs.

## Safe and durable

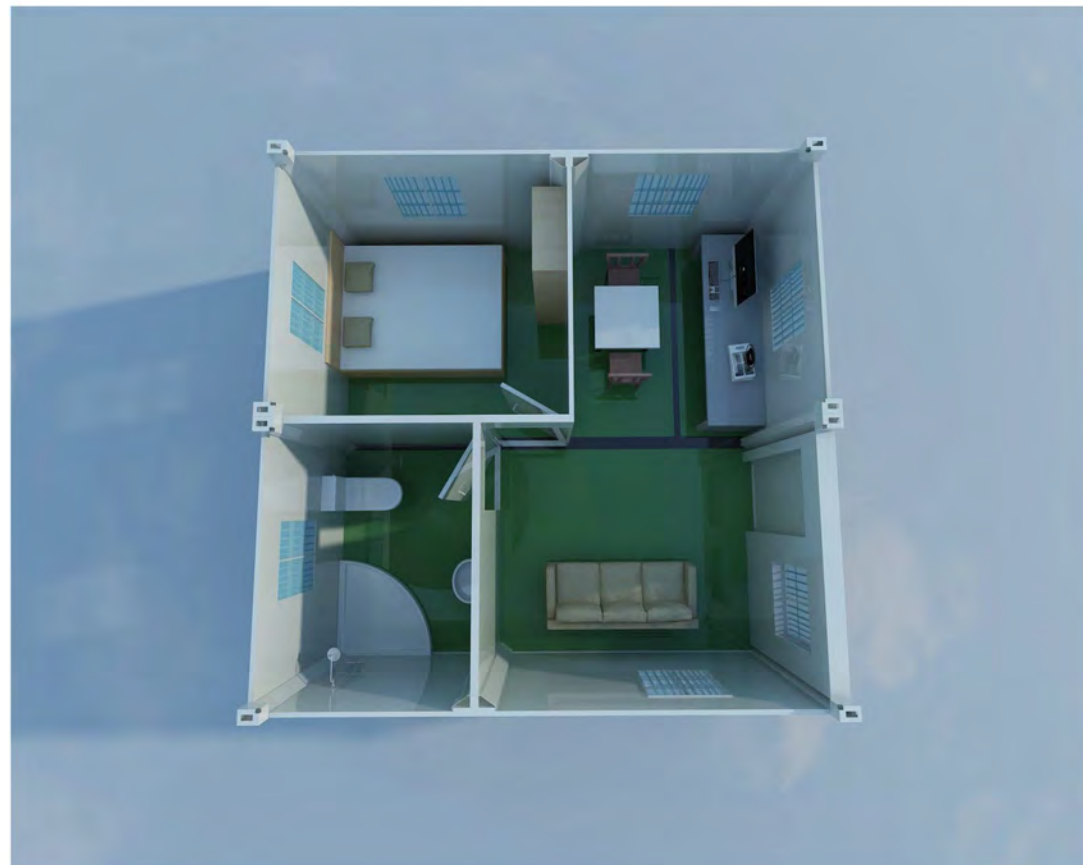
Reinforced structure, the box is fireproof and thermally insulated, safe and durable, fireproof, windproof and earthquakeproof, with a service life of more than 15 years, earthquake resistance intensity of 8 degrees, and wind resistance of 11 degrees.



# Office

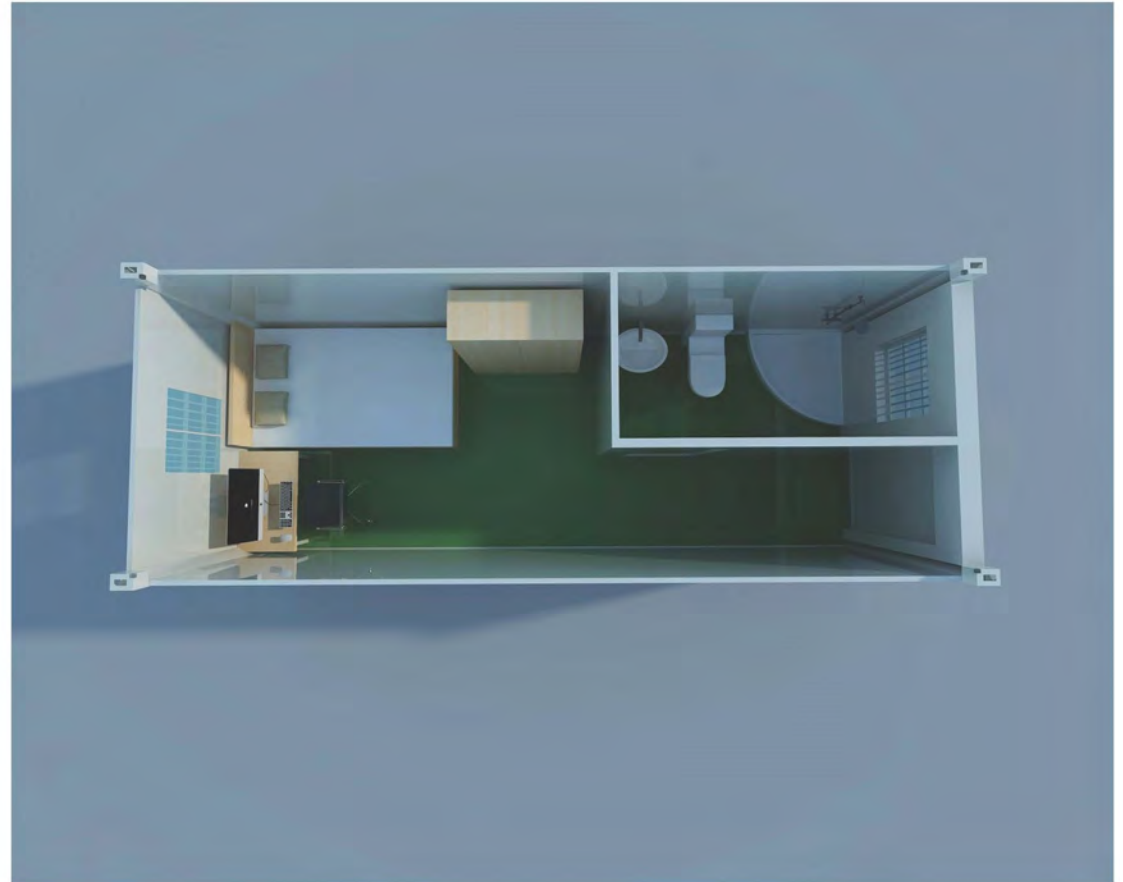


# House

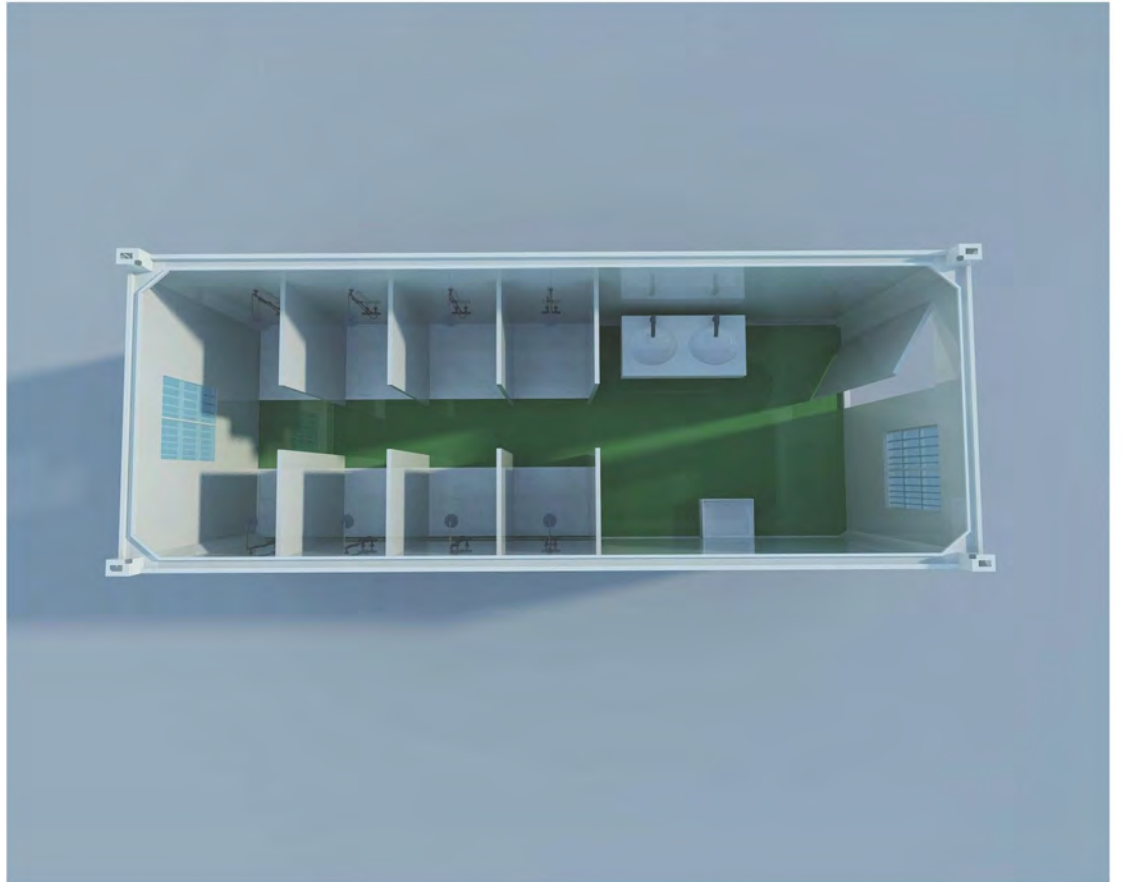
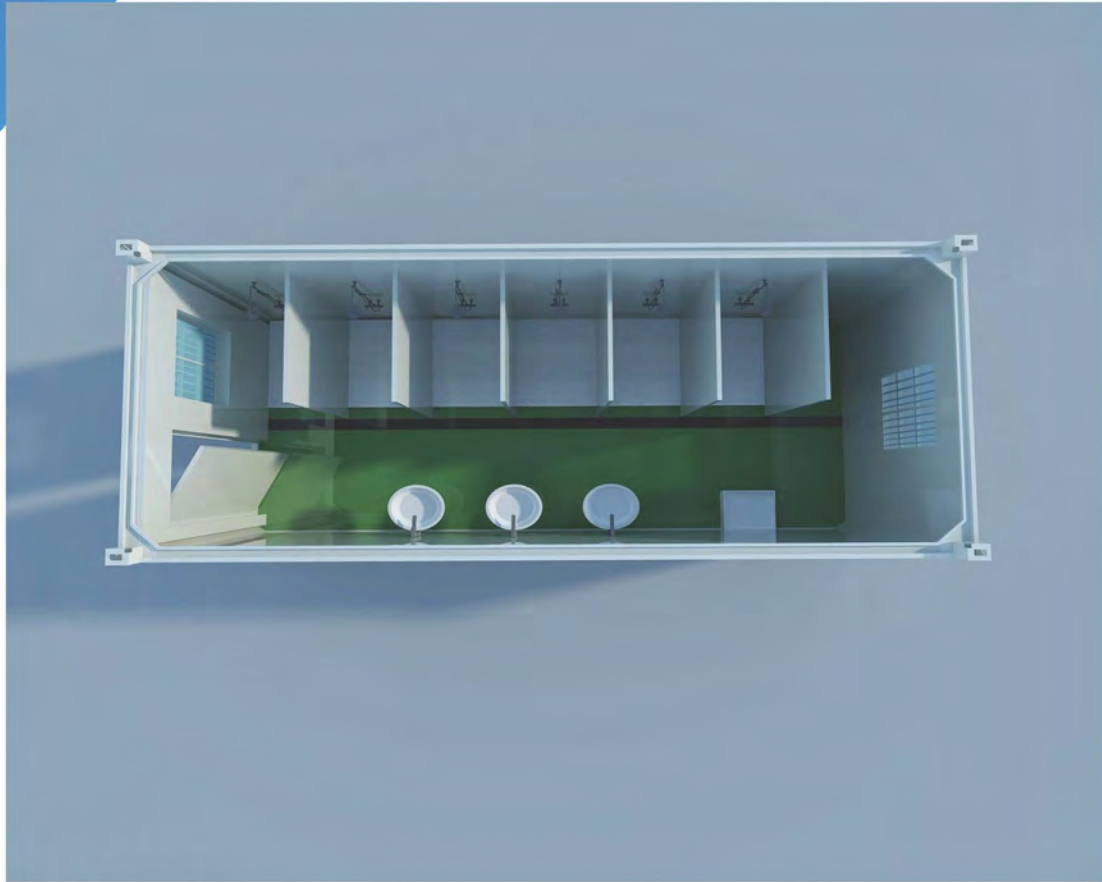




# House/Dormitory

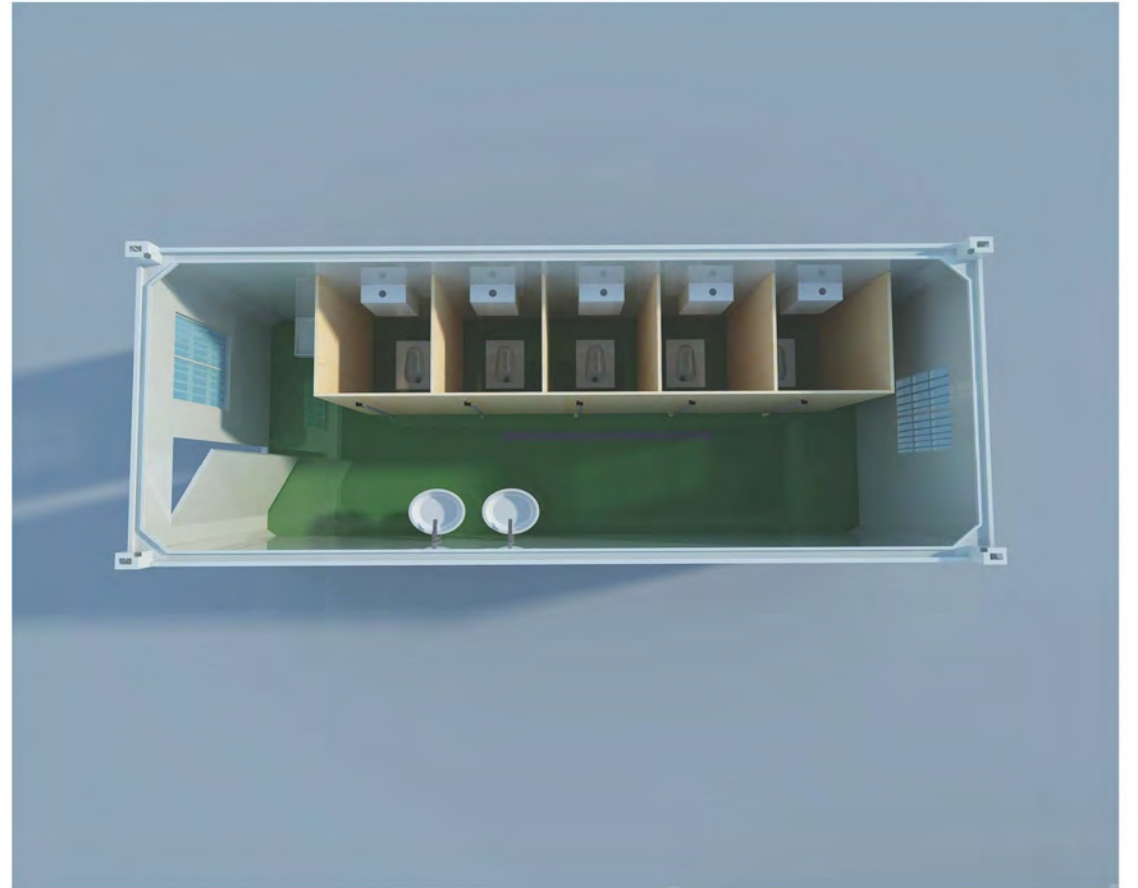
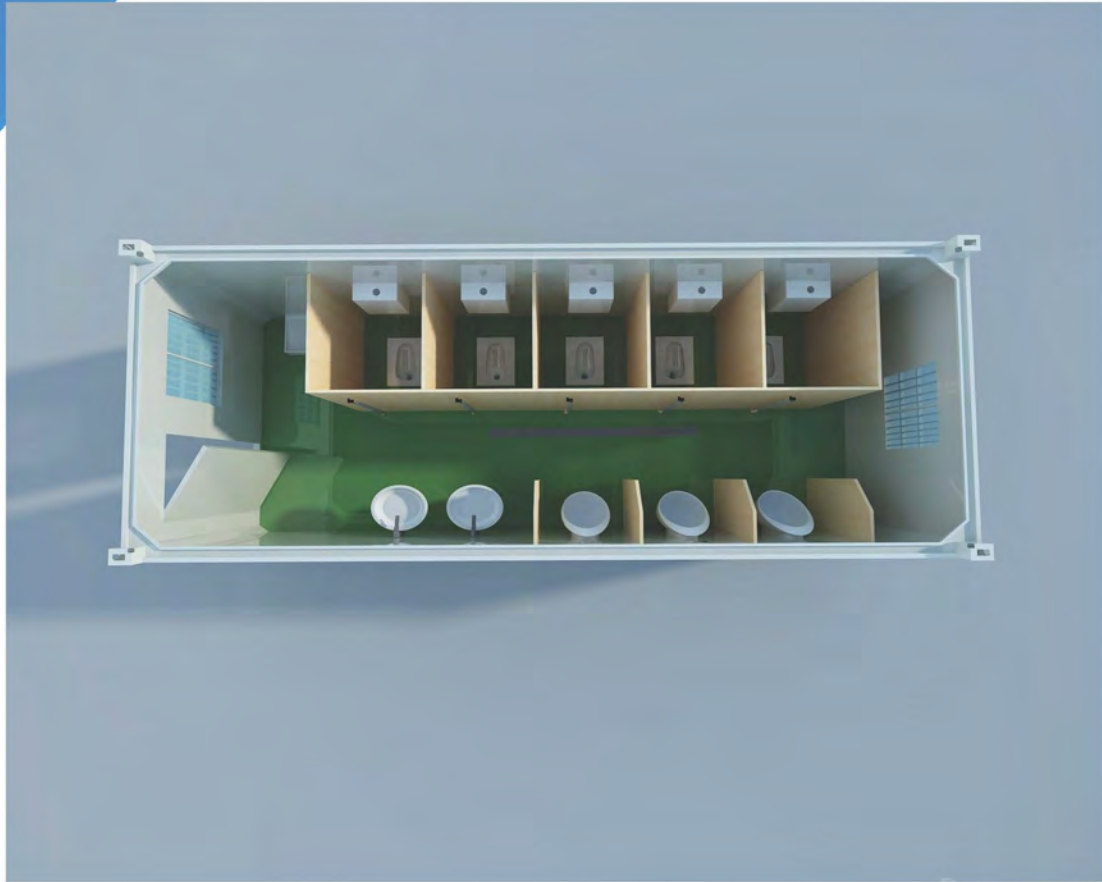


# Bathroom





# Toilet



# Toilet





# Application







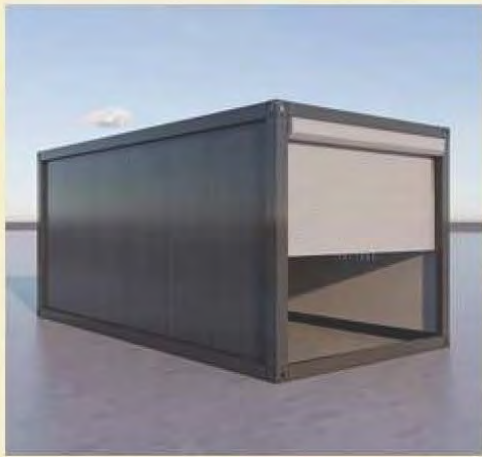


















# Project Case

**1. China Construction First  
Flat pack Container project Department**



**2. Flat Pack Container Project Department  
of China Railway 17 Metallurgical Group  
Co. LTD**



### 3. Packing Container Project Department of China Railway 22 Bureau Group Co., LTD





## 4. Beijing sub-center road bridge project



#### 4. China Railway 14 Bureau integrated housing project

