

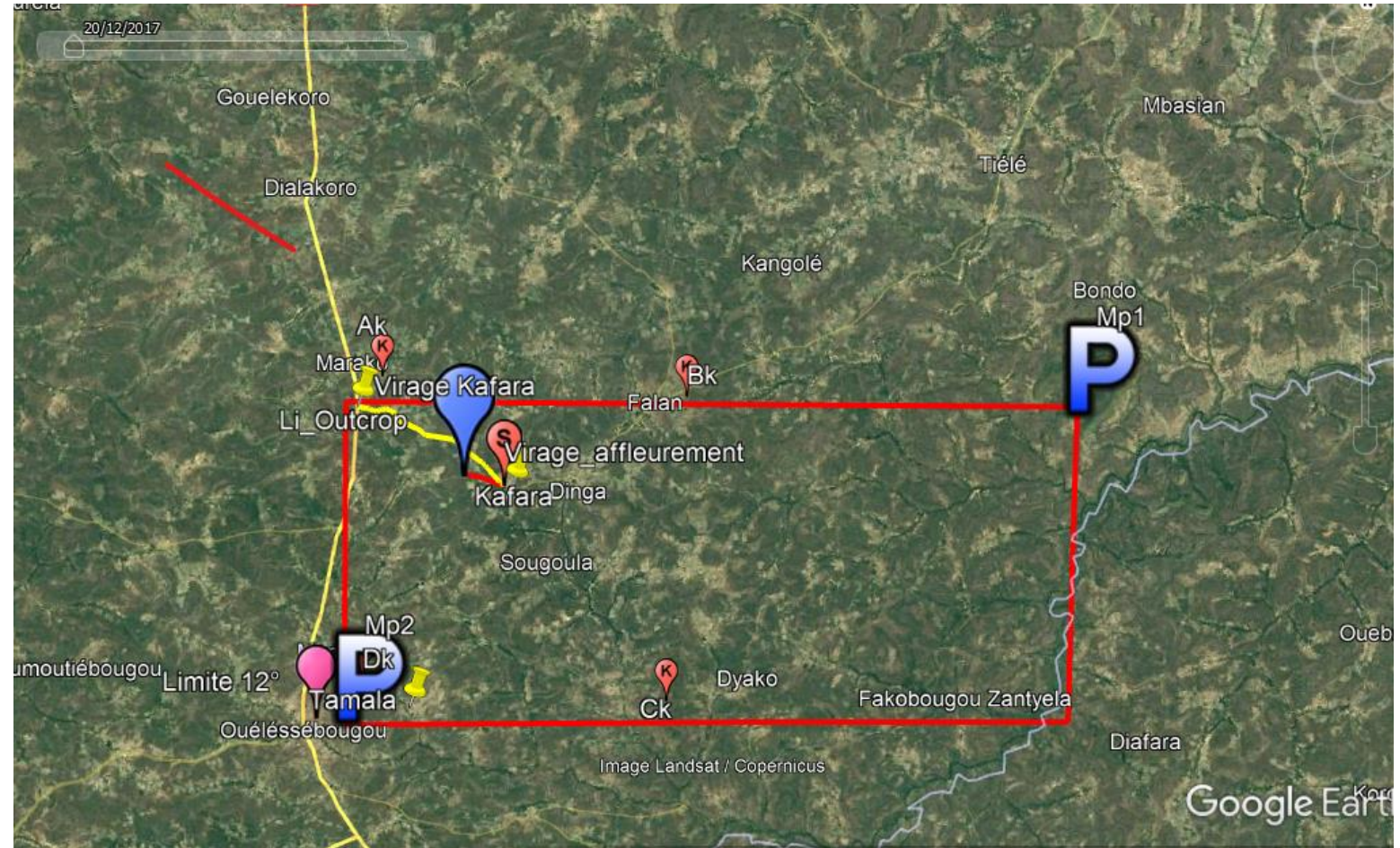
Report on Lithium project in Mali

Indices Promotion Project

Mission report

Geochemical prospecting campaign and geological mapping

lithiums Zone
of the 02
licenses area
Donkorona
and Kafara



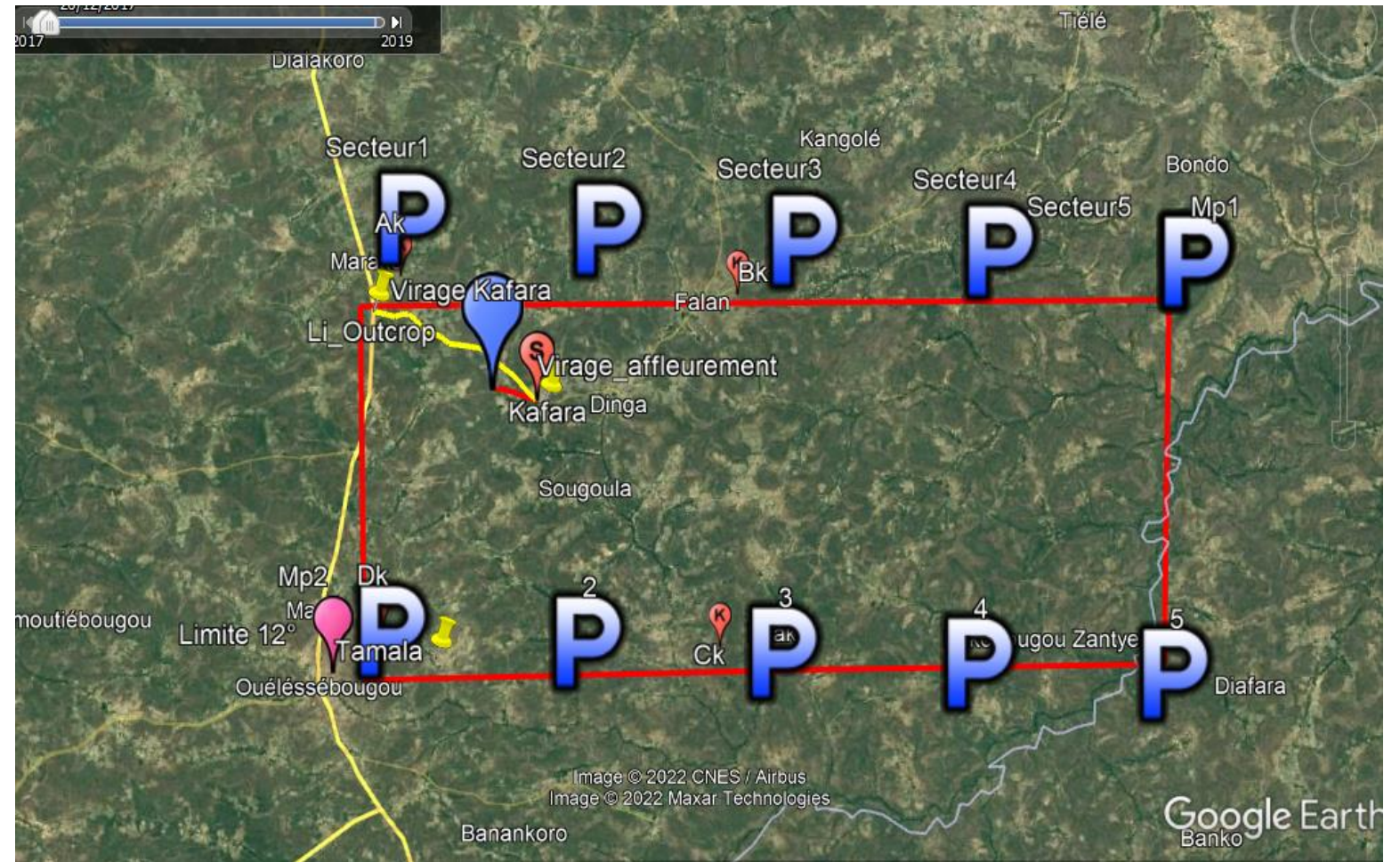
Performance

- The 1994-1997 campaign included the topographic maps of Bamako West and Bamako East, the South East and South West parts of which were studied by the Baoulé Bafing project financed by Japan.
- This campaign covers part of the 1/200,000 topographic map of Bamako East. Its objective is the mining inventory and the geological mapping of this zone which had been interpreted as granite.
- The studies carried out concern geomorphological and geochemical surveys (MThis campaign covers part of the 1/200,000 topographic map of Bamako East. Its objective is the mining inventory and the geological mapping of this zone which had been interpreted as granite.ille 500m x 200m) and geological.
- all the samples taken underwent physical preparation in the field. Analyzes for gold and multi-elements (chromium, cobalt copper, lithium, manganese, nickel lead and zinc) were carried out at the PDRM laboratory in Bamako.
- The results will make it possible to attract national and foreign investors for the development of mining industries, the exploitation of which increases the share of the mining sector in the GDP.
- the work area of the present campaign is located 80km south of Bamako and is located in the heart of Djitoumou in the Ouéléssébougou sub-prefecture. It is located between 2 sectors previously studied by the Baoulé-Bafing project financed by Japan

Lithium

Lithium has a maximum of 142 ppm and a minimum of 2 ppm, The only abnormality is 5 ppm, the probable abnormality is 10 ppm, and the sure abnormality is 18ppm,

- An anomaly of 142 ppm in gravelly soil is observed throughout the area in the sector (Donkorona and Kafara at 1,800 km from N'Korobougou,
- An anomaly of 22 ppm in a silty soil is located 100 m north of Tamala lithologically these anomalies are located in the volcano-sedimentary.

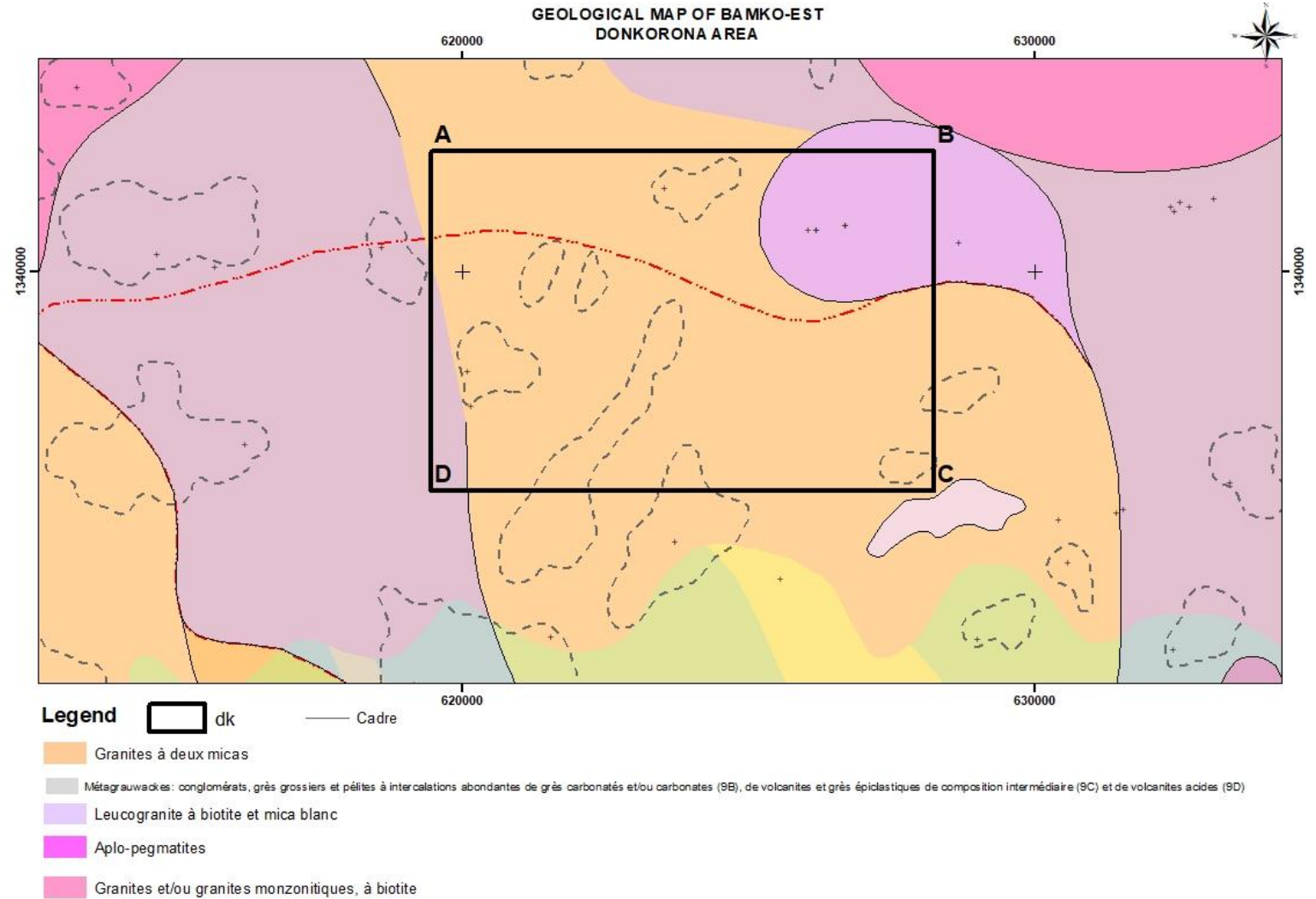


Kafara granite

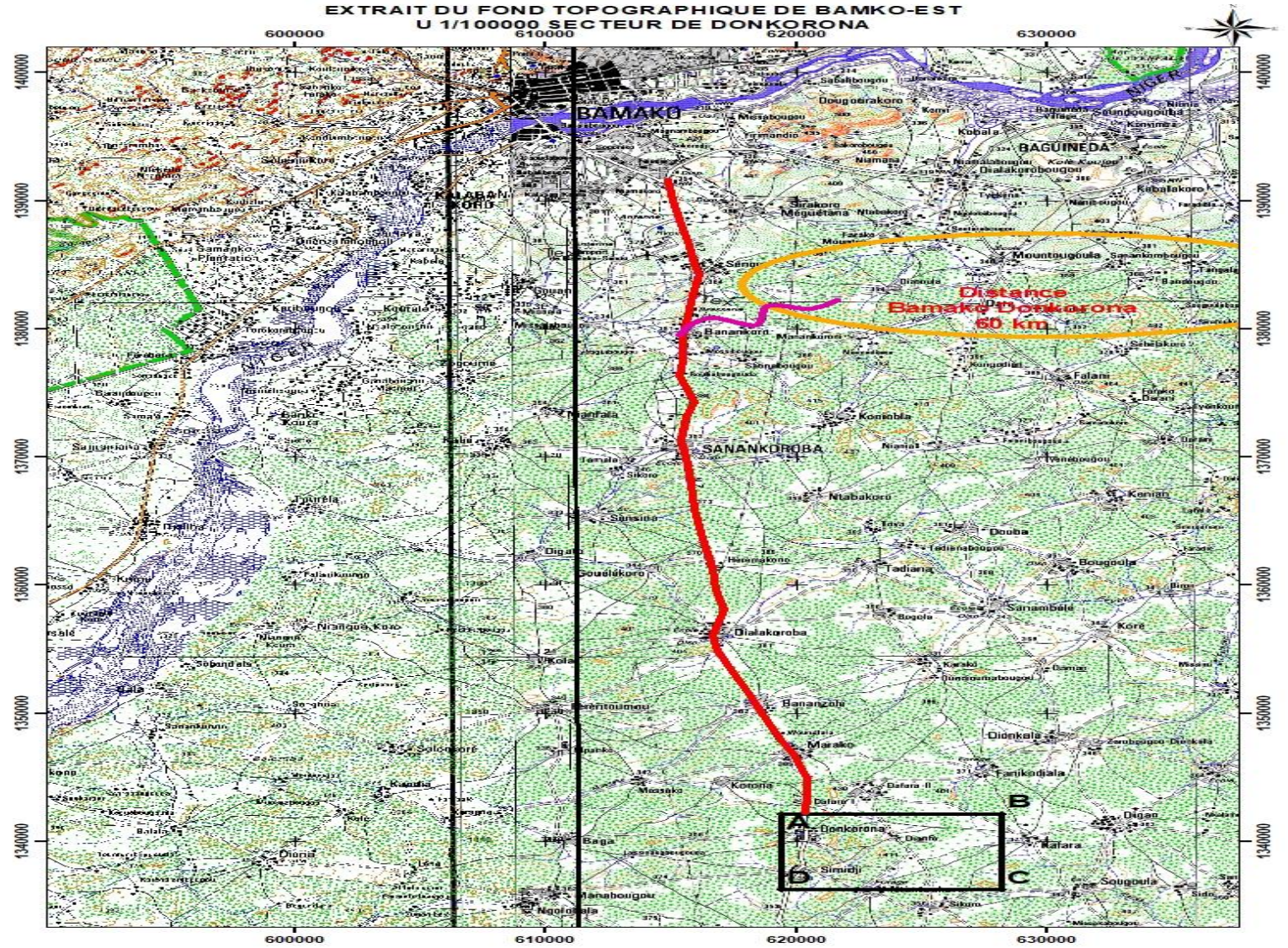
It is an unoriented porphyritic granite, composed mainly of plagioclase phenocrysts, few quartz, potassium feldspar and biotites.

This granite is affected by:

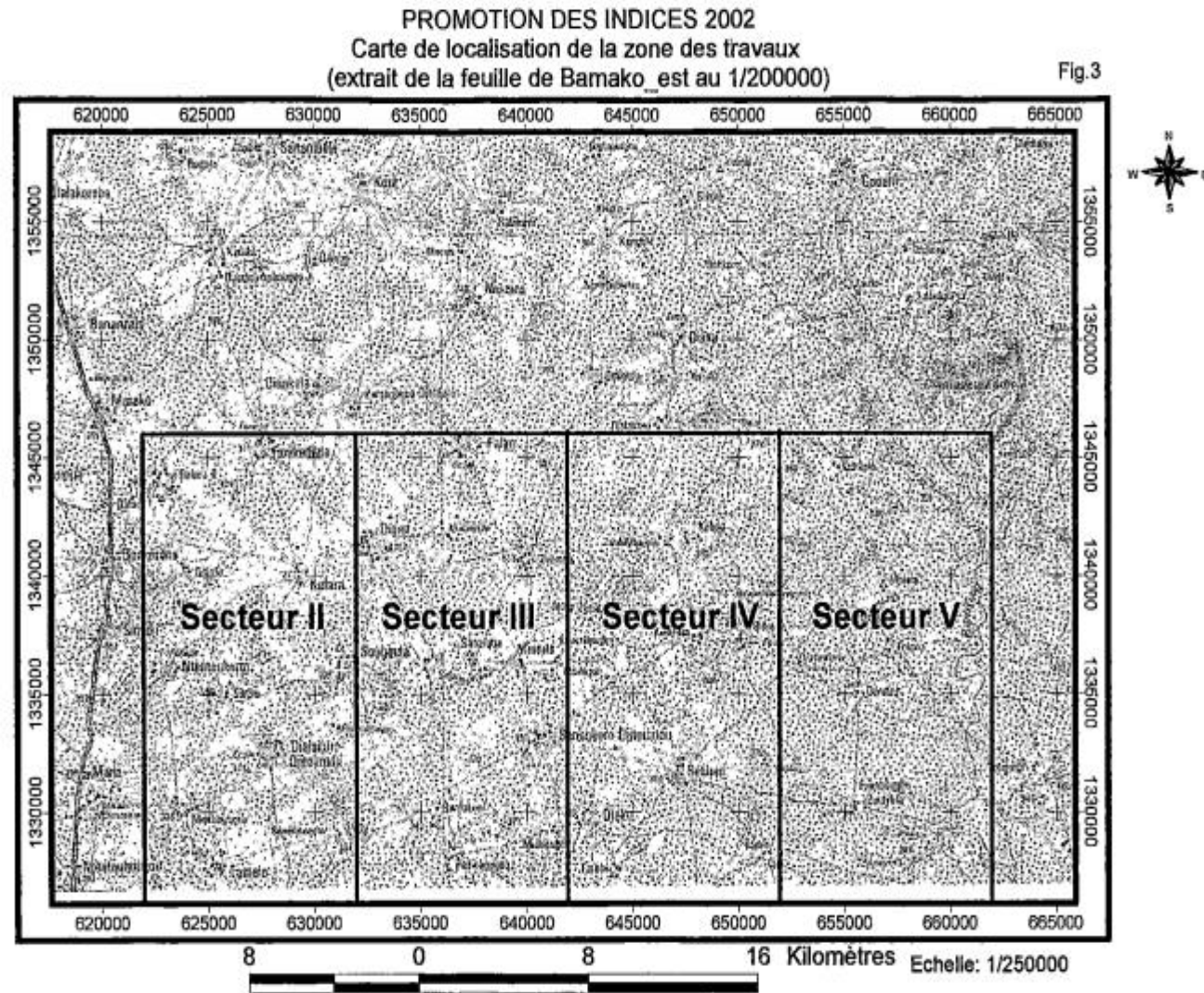
- Three (o3) sinistral strike-slip faults with a direction varying between N-74° and N-90° and a dip varying between 70° and 80° towards the North,
- two (o2) dextral strike-slip faults with a N direction of 40° each with a subvertical dip of 80° to 90°



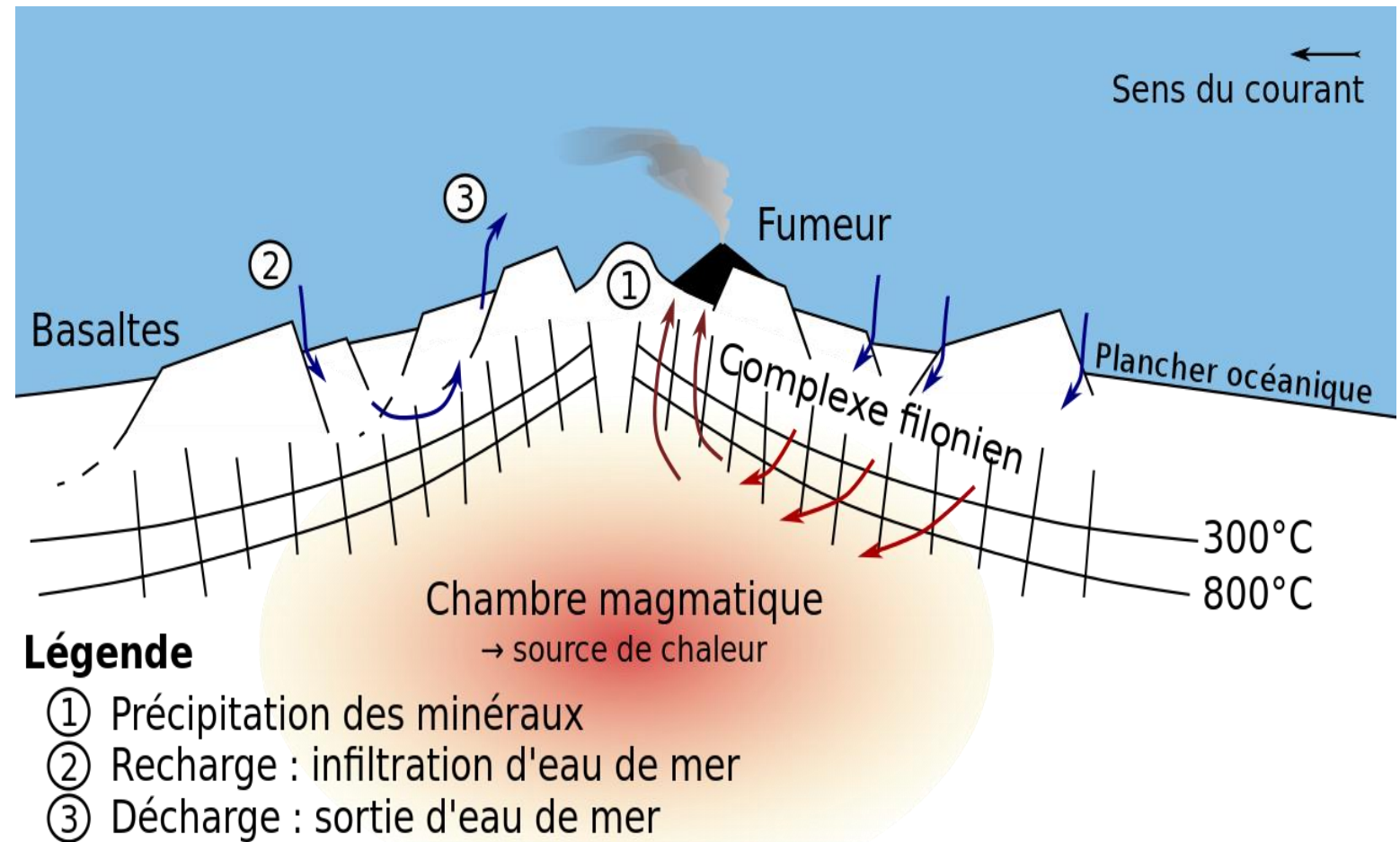
Road from Bamako to the Licenses about 80 km.



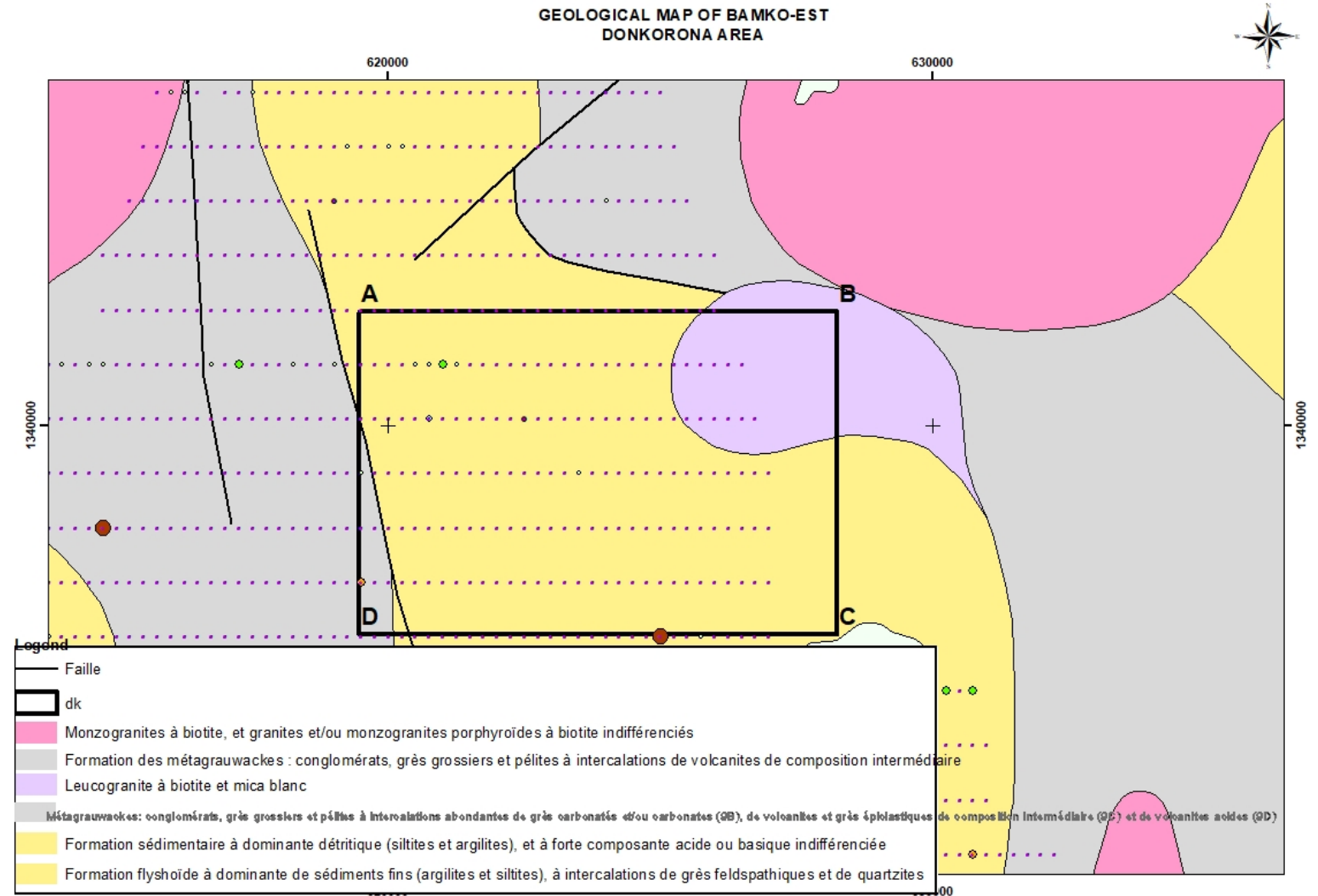
Lithium association in the ore zone
Granite or granodiorite
These are rocks with very altered fine textures, reddish, without grains of quartz, potassium feldspars, and ferromagnesian (biotite, muscovite, hornblende ..) These formations were encountered in the wells of sectors II, III, IV and v.



Process of filon complex formation during the magmatism.



The work of this campaign has made it possible to establish a geological map



Informations on the area of Donkorona

APPLICATION FORM FOR MINING INVESTMENT

NAME OF COMPANY	la Société DJANGO MINES-SARL la Société DJOUM-SARL
ADDRESS OF COMPANY	BAMAKO, Badialan II, Kasse Keïta Street
NAME OF PROPERTY	DONKORONA
SIZE OF PROPERTY (SQ.KM)	51 sq-Km
TYPE OF COMMODITY	Lithium (Li)
LOCATION	BAMAKO-EST
LICENCE TYPE	EXPLORATION LICENSES
STATUS OF EXPLORATION	SURFACE,
INVESTMENT PROPOSAL(GIVE DETAILS)	PURCHASE
LOCATION MAP ATTACHED	ATTACH

License of the area

MINISTERE DES MINES

SECRETARIAT GENERAL

REPUBLIQUE DU MALI
UN PEUPLE - UN BUT - UNE FOI

ARRETE N°2017-³⁸²⁹/MM-SG DU 14 NOV. 2017

MODIFIANT L'ARRETE N°2017-2616/MM-SG DU 08 AOÛT 2017 PORTANT ATTRIBUTION D'UN PERMIS DE RECHERCHE LITHIUM ET DES SUBSTANCES MINERALES DU GROUPE 4 A LA SOCIETE DIANGO MINES SARL A DONKORONA (CERCLE DE KATI).

LE MINISTRE DES MINES,

- Vu la Constitution ;
- Vu la Loi n°2012-015 du 27 février 2012 portant Code Minier en République du Mali ;
- Vu le Décret n°2012-311/P-RM du 21 juin 2012, modifié fixant les conditions et les modalités d'application de la Loi n°2012-015 du 27 Février 2012 ;
- Vu le Décret n°2017-0320/P-RM du 11 avril 2017, portant nomination des membres du Gouvernement ;
- Vu le Décret n°2012-490/P-RM du 07 septembre 2012, portant approbation de la convention type pour la prospection, la recherche et l'exploitation des substances minérales ;
- Vu l'Arrêté n°2017-2616/MM-SG du 08 août 2017 portant attribution d'un permis de recherche d'or et des substances minérales du groupe 2 à la Société DIANGO MINES SARL à Donkorona (Cercle de Kati);

ARRETE :

ARTICLE 1^{ER} : l'article 2 de l'Arrêté n°2017-2616/MM-SG du 08 août 2017 susvisé est modifié : en ce qui concerne la superficie ainsi qu'il suit :

Au lieu de :

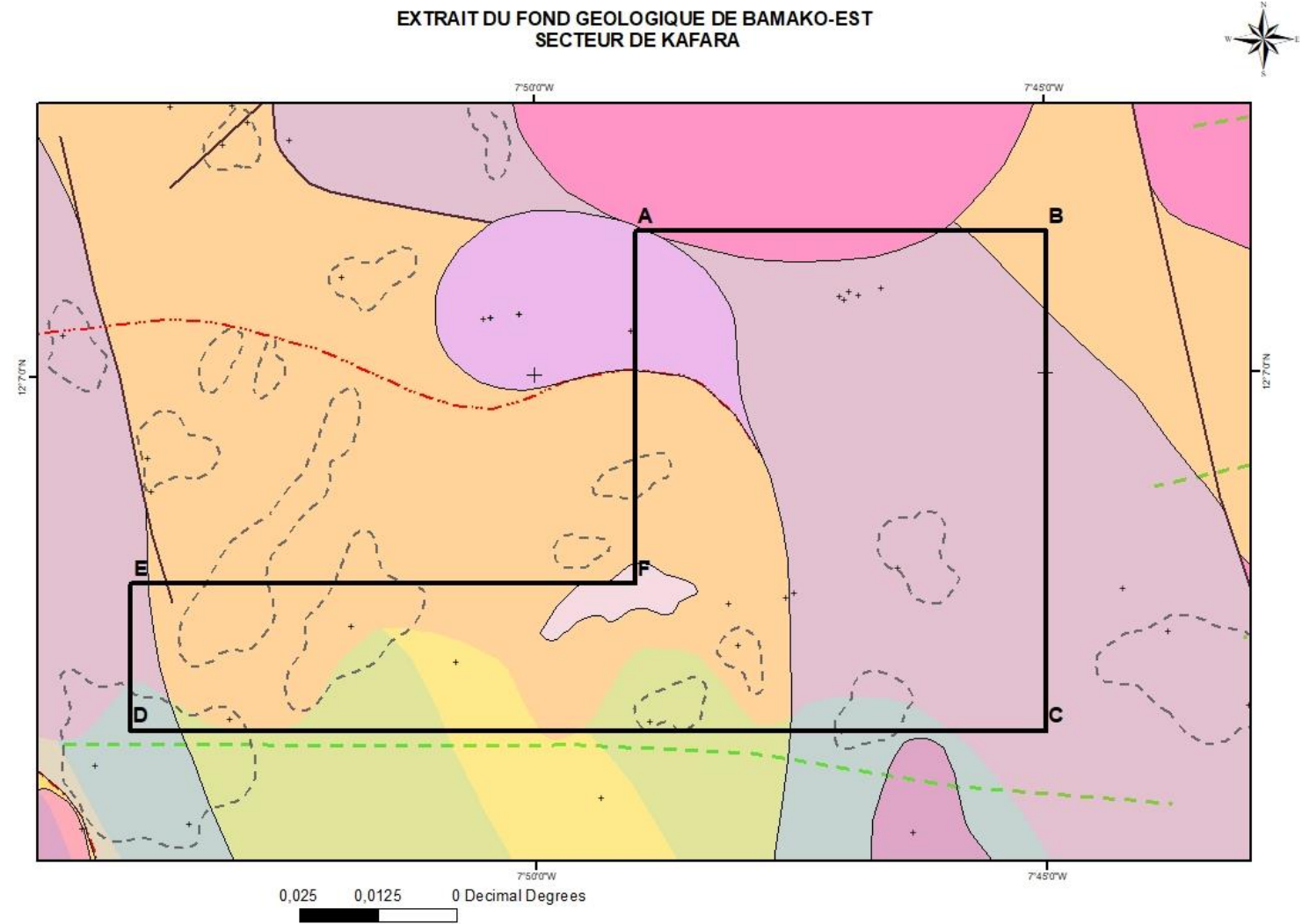
Superficie : 25 km²

Lire :

Superficie : 52 km².

ARTICLE 2 : Les autres dispositions de l'Arrêté restent inchangées.

Geological map of Kafara, there are several outcrop on the perimeter.



Conclusion

The work of the present campaign has made it possible to establish a geological map that is more precise than the old maps which only show granites in the whole of the work area. The geological survey revealed an alternation of sedimentary volcano and rarely outcropping granites. Laterite covers almost the entire study area

The granites encountered are of two types: oriented granites and syn tectonic granites and postectonic equant granites. East-west faults have been observed in the equant granites.