

Solar TITAN 130 Specifications and Status Description

Two Solar TITAN 130 gas turbine generator sets, with each turbine having:

- **Rated power output:** 15 MW
- **Electrical efficiency:** 31%
- **Complete simple cycle package** (all auxiliary systems included)

At rated operating conditions per unit:

- **Coke oven gas consumption:** 8,600 Nm³/h
- **Exhaust gas flow rate:** 179,283 kg/h
- **Exhaust gas temperature:** 499°C
- **Exhaust gas calorific value:** ≈570 kJ/kg



Overall photo of the gas turbine



Gas Turbine Housing Condition

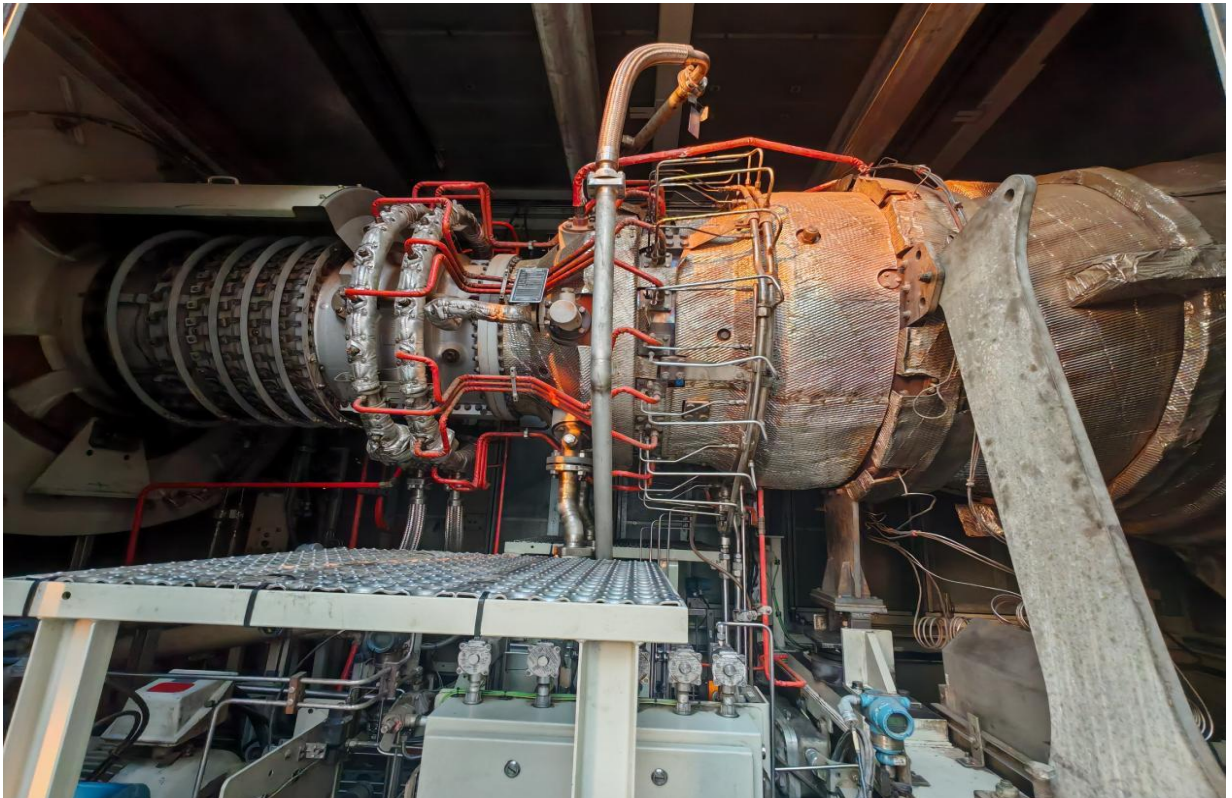


ABB Generator Set



Gas Turbine Introduction

TITAN130 Coke Oven Gas Unit

- **Rated Power Output:** 15,000 kW
- **Compressor:** 14-stage (with 6 adjustable stages)
- **Turbine Configuration:** 3-stage
- **Engine Version:** 20501AXI
- **Rotor Speed:** 11,197 rpm (50 Hz)

Operational History

- **Commissioning Date:** June 2017
- **Shutdown Date:** April 14, 2025 (due to normal shutdown of upstream coke oven production line)
- **Total Operating Hours:** 39,430 hours
- **Start-up Count:** 303 times

- **Maintenance Protocol:** Regular maintenance performed per Solar's Operation Manual during operation period, with equipment functioning properly

Current Status

- The TITAN130 unit is currently maintained by the original operating team.
- Unit condition remains excellent.
- All auxiliary power generation equipment is complete and fully operational.

