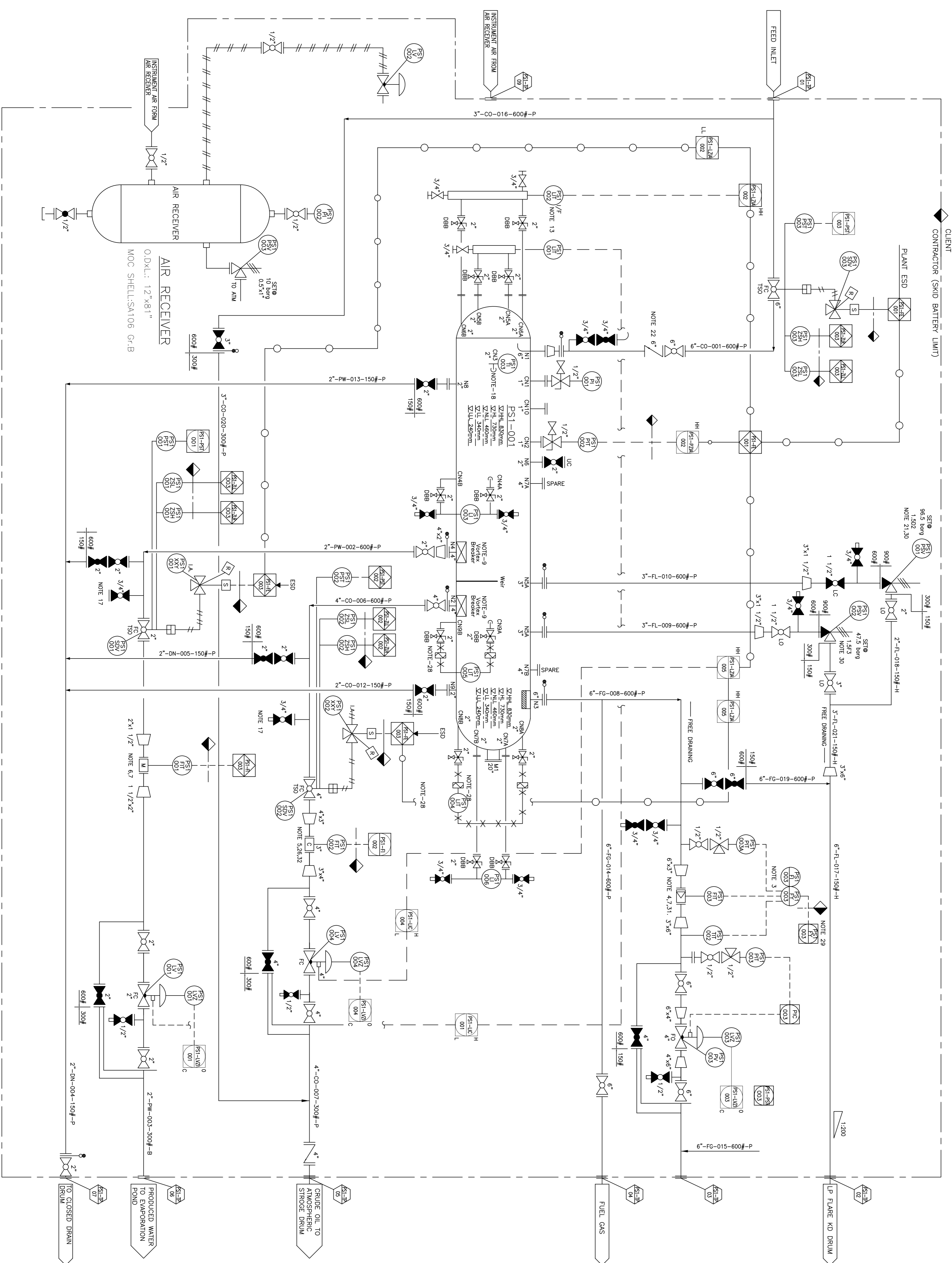


PRODUCTION SEPARATOR

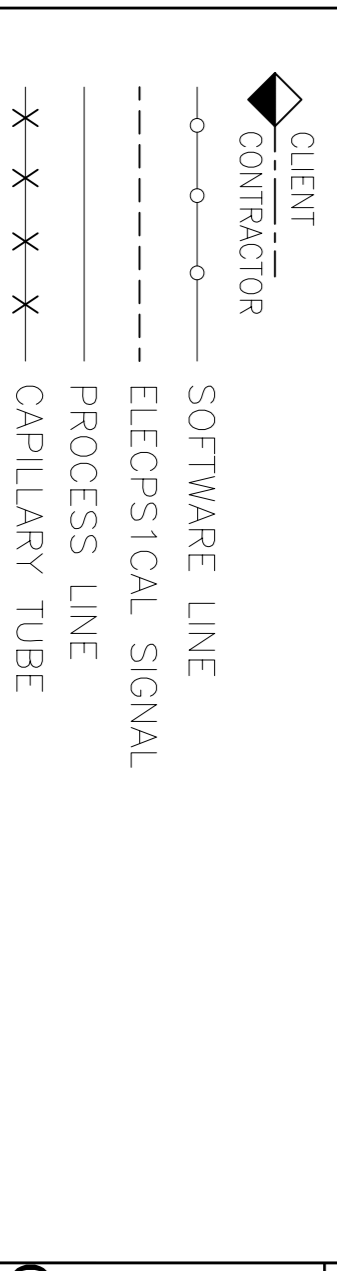
O.P./O.I.: 7 barg/35°C
 D.P./D.I.: 96.5/FV barg/82°C
 I.D.K.L.: 60" x 240"
 MOC SHELL: SA516 Gr.70 NACE



NOTES:-

1. FLOWMETERS :
 VORTEX TYPE FLOW METER. (EMERSON)
 CORIOLIS FLOW METER. (EMERSON MICRO MOTION)
 MAGNETIC TYPE FLOW METER. (EMERSON)
2. EMERGENCY SHUTDOWN VALVES:
 ESDV-FEED INLET : 6" (FLOWSERVE ACTUATOR)
 ESDV-OIL OUTLET : 4" (FLOWSERVE ACTUATOR)
 ESDV-PRODUCED WATER OUTLET : 2" (FLOWSERVE ACTUATOR)
3. CONTROL VALVES :
 PCV-GAS-003 : 4" (FISHER MAKE)
 LCV-PW-001 : 2" (FISHER MAKE)
 LCV-OIL-004 : 4" (FISHER MAKE)
4. PRESSURE AND TEMPERATURE COMPENSATION.
5. PRESSURE SAFETY VALVE (FARIS / BLISS ANAND MAKE)
 PSV-001 @ 96.5 BAR(g) 3"900#x2"300#
 PSV-002 @ 47.5 BAR(g) 3"900#x3"300#
6. UPSTREAM/DOWNSTREAM RUN 10ND/SND.
7. EACH SEPARATORS SHALL BE PROVIDED AS SKID-MOUNTED UNIT COMPLETE WITH ON SKID PIPING VALVES FITTINGS AND INSTRUMENT
8. MATERIAL IN SOUR SERVICES SHALL BE IN ACCORDANCE WITH NACE MR-0175
9. MANWAY PROVIDED OF 20".
10. THIS LEVEL TRANSMITTER MEASURES INTERFACE LEVEL BETWEEN TWO LIQUID LEVELS IN LIGHT LIQUID AND HEAVY LIQUID
11. ALL CONTROL VALVE SHALL BE PROVIDED WITH RELEVANT BLOCK, BY-PASS AND DRAIN VALVES.
12. THE MAXIMUM SOUND PRESSURE LEVEL EMITTED BY EACH SEPARATOR PACKAGE SHALL NOT EXCEED A SOUND PRESSURE LEVEL OF 85dB (A) AT DISTANCE OF 1 METER FROM THE EQUIPMENT BOUNDARY.
13. FOR SAMPLING IN THE HORIZONTAL LENGTH OF PIPE.
14. NORMAL LIQUID LEVEL IS INTERFACE LEVEL.
15. VALVE TAGGING.
 PRODUCTION SEPARATOR.
 PS-001 PS1.
 INS TYPE FIT.
 SR. NO 001
 SIMILARLY FOR PS-002 TO PS-006 TO BE FOLLOWED
16. VESSEL INLET NOZZLE SHALL BE FITTED WITH ANSI 600 WAFER TYPE CHECK VALVE.
17. ALL INSTRUMENT AND VALVE SHALL BE WIRED TO ON SKID JOB.
18. ALL INSTRUMENT AND VALVE SHALL BE PROVIDED WITH INDICATOR.
19. SIDE MOUNTED RADAR TYPE INSTRUMENT IN INTERFACE COMPARTMENT.
20. REMOTE SEAL TYPE D.P TRANSMITTER WITH CAPILLARY AND FLUSH RINC.
21. INDICATION OF COMPENSATION FLOW.
22. PSV MATING FLANGE WILL BE 900# AND 300#.
23. VORTEX AND CORIOLIS FLOWMETER MATING FLANGE IS OF 900#.
24. DATA RELEVANT TO FEED FLOWRATE MAD CHARACTERISTICS ARE THE FOLLOWING @ 50 PSIG/ 50 DEG:
 GAS FEED FLOWRATE : (0.6-9) MMSCTD
 OIL FEED FLOWRATE : 1000-10000 BBL/D
 WATER FEED FLOWRATE : 300-3000 BBL/D
 GAS DENSITY : 4.3 kg/m³
 GAS VISCOSITY : 0.012 cP
 OIL DENSITY : 830 kg/m³
 OIL VISCOSITY : 4 cP
 WATER DENSITY : 1100 kg/m³
 WATER VISCOSITY : 0.35 cP
 TURNDOWN : 10%

LEGEND:-



PIPING AND INSTRUMENTATION DIAGRAM
 PRODUCTION SEPARATOR (PS1-001)
 CAPACITY RATING UP TO 10000 BOPD