

RESIDENTIAL HOUSING

ECONOMIC FLATPACK CONTAINER HOUSE

1



Economic Flatpack Container House is a kind of modular house, could be combined into multiple and multilayer as customer requirement.

Standard Specification

Size	20ft' or Customized
Main Frame	Light steel structure
Insulation	EPS/ PU/ Glasswool/ Rockwool sandwich panel
Floor	Plywood/ Cement board with PVC /Wooden flooring
Door	Sandwich panel door/ Steel Wooden door/ Steel door
Window	Plastic steel window/ Aluminium alloy window/ Safety window and etc.

RESIDENTIAL HOUSING

SHIPPING CONTAINER HOUSE

2



Standard Specification

Size	20ft' and 40ft'
Main Frame	Shipping Container
Internal Wall	Sandwich panel/ Light steel keel system
Floor	Shipping container floor/ Cement floor with PVC/ Wooden flooring
Door	Wooden door/ Steel Door
Window	Plastic steel window/ Aluminium alloy window/ Safety window and ect.



RESIDENTIAL HOUSING

MODULAR HOTEL

3



WAREHOUSE

INTEGRATED FOLDING STORAGE CONTAINER

1

Integrated folding storage container is widely used for house moving, family storage, emergency situation, warehouse and so on. It looks like a kind of foldable container which is made of steel materials and galvanized steel sheet. Double steel doors are convenient.



Standard Specification	
Size	10ft', 12ft', 16ft', 19ft'
Surface	Painted or powder Coated
Floor	Plywood
Wall	Steel Frame with galvanized Steel Sheet
Door	Steel double door
Roof	Corrugated or Flat Steel Sheet

Advantage:

1. Solid and durable.
2. Foldable structure for quick and efficient transportation or storage.
3. Low cost.
4. Can be installed and uninstalled quickly without damage.



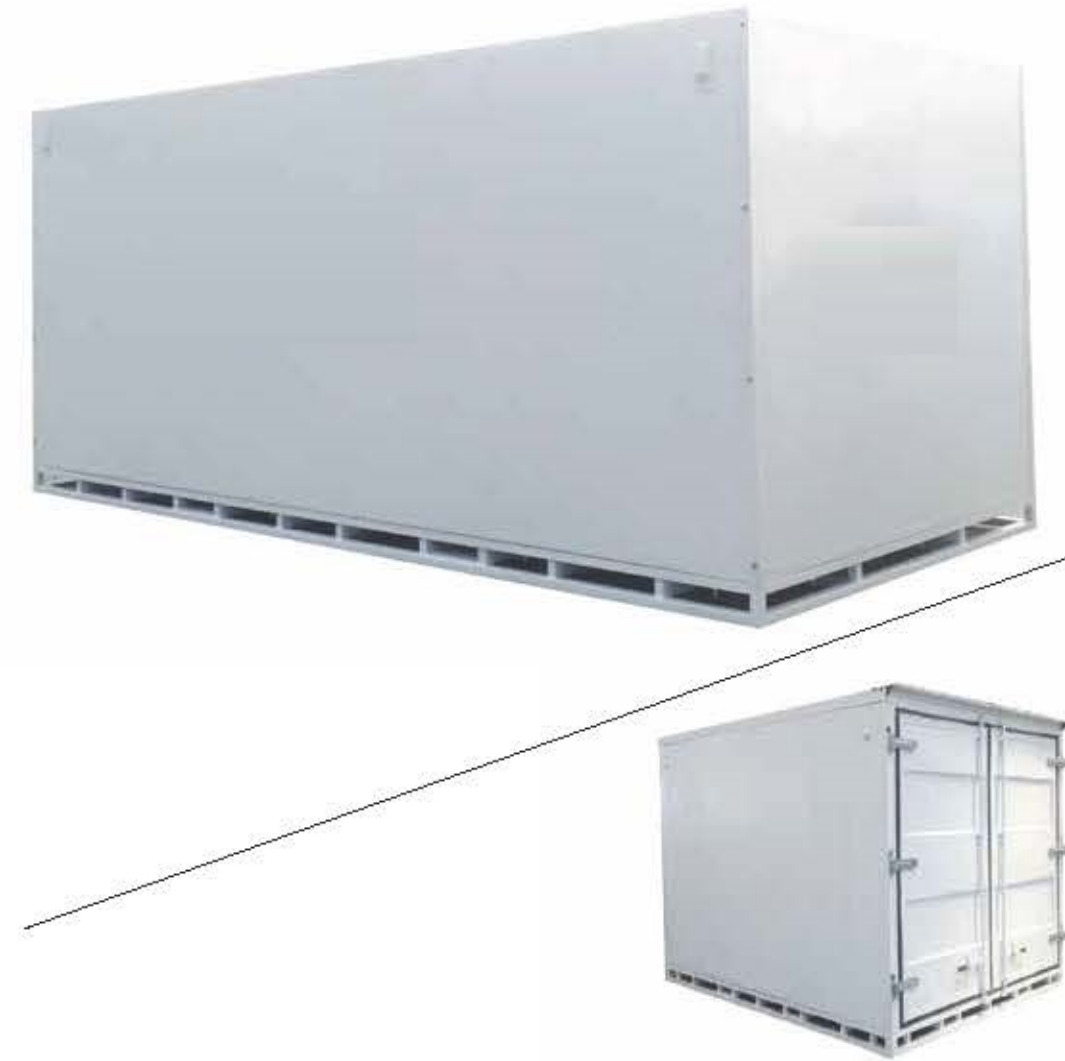
WAREHOUSE

SPLIT FOLDING STORAGE CONTAINER

2



Split folding storage container is foldable, man-portable, low-cost and can be quickly installed or uninstalled without damage. They are efficient used for goods transportation or storage.



Standard Specification

Size	10ft' 12ft' 16ft' 19ft'
Surface	Painted or powder Coated
Floor	Plywood or Riffled Floor
Wall	Steel Frame with galvanized steel sheet/ sandwich panel
Door	Steel double door
Roof	Corrugated or Flat Steel Sheet

EXHIBITION HALL

HYDRAULIC SHOWROOM

1



Standard Specification

Size	20ft' or 40ft'
Main Frame	Shipping Container
Power system	Hydraulic system
Floor & Wing	Aluminium checkered plates
Ceiling	Aluminium plate
Other accessories	LED lights, electric box, switch, socket, awning.

EQUIPMENT CONTAINER

1



Standard Specification

Size	20ft', 40ft' or customized
Main Frame	Light Steel Structure or Shipping Container Frame
Wall	Steel Frame with corrugated steel Sheet
Floor	Plywood, cement, ruffled plate
Door	Steel double door
Roof	Corrugated steel Sheet

INSULATION MATERIAL

1

Polyurethane Product Specifications

项 目 Item	指 标 Norm	分 类 Classification	类 型 Type			
			I		II	
密度 Density(kg/m ³)		不小于	30	30	30	30
压缩性能 屈服点时或形变 10% 时的压缩应力 KPa Compression Performance: compressive stress at the yield point or in the case of 10% of deformation		不小于	100	100	100	150
导热系数 Thermal Conductivity(W/m·K)		不大于	0.022	0.027	0.022	0.027
尺寸稳定性 Dimensional Stability(70°C、48h)(%)		不大于	5	5	5	5
水蒸气透湿系数 Water Vapor Permeability (23±2)°C (0% 至 85%RH)(ng/Pa·m·s)		不大于	6.5		6.5	
吸水率 Absorption(%)		不大于	4		4	
燃烧性 Flammability	垂直燃烧法 Vertical Burning	平均燃烧时间 Average Burning Time(s)	不大于		30	
		平均燃烧高度 Average Height of Burning (mm)	不大于		250	
	水平燃烧法 Horizontal Burning	平均燃烧时间 Average Burning Time(s)	不大于		90	
		平均燃烧高度 Average Height of Burning (mm)	不大于		50	

EPS 产品技术指标 Specifications of EPS Product

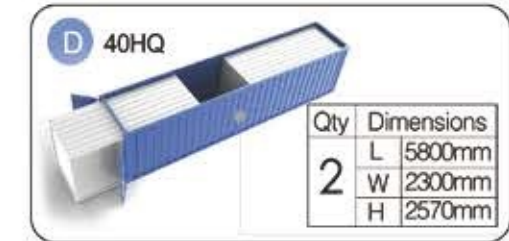
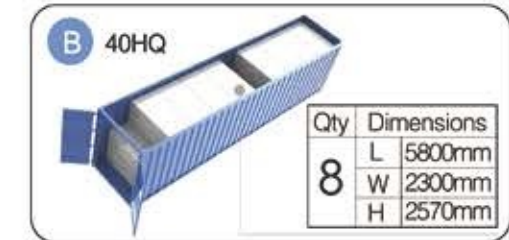
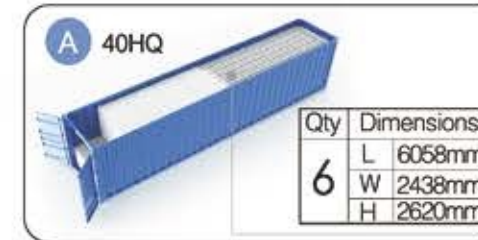
项 目 Item	单 位 Unit	性能指标 Performance Specification				
			I	II	III	
表面密度 Apparent Density	不小于	kg/m ²	15	20	30	
压缩强度 即在 10% 形变下的压缩应力 Compressive Strength (Compressive Stress in the case of 10% of deformation)	不小于	kPa	60	100	150	
导热系数 Thermal Conductivity	不大于	W/(m·K)	0.041	0.041	0.041	
70°C 48h 后尺寸变化率 Dimensional Stability after 48 hours at 70°C	不大于	%	5	5	5	
水蒸气透湿系数 Water Vapor Permeability	不大于	(ng/Pa·m·s)	9.5	4.5	4.5	
吸水率 Absorption(%)	不大于	%	6	4	2	
熔结① Melting Notal	断裂弯曲负荷 Breaking Load	不小于	N	15	25	25
	弯曲变形 Flexural Deformation	不小于	mm	20	20	20
氧指数② Oxygen Index(OI)	不小于	%	30	30	30	

岩棉板的物理性能指标 Physical Property Index of Rockwool

密度 Density	极限偏差 Limit Deviation(%)			导热系数 Thermal Conductivity W/ (m·K) [平均温度 Average Temperature (70±5)°C]	有机物含量 Organic Matter Content(%)	不燃性 Incombustibility	最高使用温度 Max.Temperature (°C)
	优等品 High-class Product	一等品 First-class Product	合格品 Qualified Product				
80				≤ 0.044			400
100	± 10	± 15	± 20	<0.46	≤ 0.4	A 级 Grade A	600
120							
150							
160				≤ 0.048			

PACKING AND SHIPPING

2



Fully assembled model



Note:
For ease of transportation, we produce container houses based on regular way of marine transportation. Shipping method will be determined by the order conditions.

HOUSING FACILITIES

1



Light



Steel door



Steel Wooden door



Plastic steel window



Aluminum window



Exhaust fan



Stairs



Toilet partition



Solar panel



Wall air conditioner



Cabinet air conditioner



Hand basin



Hand basin



Sink



Sitting toilet



Squatting toilet



Urinal



Shower room



Shower base



Wardrobe

ENGINEERING PROJECT

CONTAINER OFFICE BUILDING

1



Three floor container office building was built in 2014. Main frame is made up of 15 sets container frame, total height is 10.52m and area is 828.9m². This building has three layer office, one large conference room, five small conference rooms and toilets.



ENGINEERING PROJECT

CONTAINER HOUSE IN SOUTH AFRICA

2

This project was built in South Africa in 2010. We provide design, production processing and installation guide for more than 100sets container houses.



ENGINEERING PROJECT

20'FT SHIPPING CONTAINER HOUSE IN NEW ZEALAND

3



ENGINEERING EXHIBITION

40'FT SHIPPING CONTAINER HOUSE IN AUSTRALIA

4



ENGINEERING PROJECT

DATA CENTER IN VANUATU

5



Data center in vanuatu was built in 2013, monomer floor area is 245m². There are generators, UPS system, central air conditioner, cable tray and other facilities in. It can support all the internal computer equipments working normal operation more than 36 hours without any external power supply.

Data center was the only place can get in touch with outside in vanuatu storm in 2015, it saved hundreds of lives and became one of the reconstruction base.



ENGINEERING PROJECT

HAINAN YIBO GARDEN CONTAINER VILLA PROJECT

6

Hainan Yibo Garden Container villa project was constructed in 2012, its area is 240 square meters, inner with 5 single sea-view room and double-layer transparent reception hall.

The originality of the double-layer villa's mould is from Chinese traditional Eight Diagrams, the main frame adopt joint shipping container house and light steel structure, with real stone paint, wooden plastic panel, glass curtain wall and so on, create a new kind of classical and modern perfect combination villa.



QINGDAO INTERNATIONAL HORTICULTURAL EXPOSITION

7

Qingdao international horticultural was built in 2014. Main frame of this two-layer building is 48 sets of customized containers frame, total area is about 1440 square meters.



ENGINEERING PROJECT

CONTAINER COFFEE SHOPS IN IRAQ

8



Container coffee shops in Iraq were built in 2012 and 2013. Each size of the unit shop is 11800mm x 4600mm x 2500mm. Storage room, air conditioner, refrigerator, coffee machines, tables, chairs and etc. are equipped with the house.

ENGINEERING PROJECT

CONTAINER CARPORT

9

Galvanized steel sandwich panel is the insulation of container carport, electric shutter and rifled plate floor are equipped with it. Container carport is economic, fast installation, movable, and etc. Normal size is 6055mm x 4810mm x 2570mm, it could be customized.



ENGINEERING PROJECT

DORMITORY FOR MINES IN AUSTRALIA

10

Dormitory for mines in Australia was built in 2013, modular size for each house is 14m x 3.5m x 3m. Main frame is light steel structure, insulation material is glasswool, fireproof plasterboard is used for interior wall to make sure everything is full compliance with Australian standards. Lateral corrugated wall appearance designing is modern.



ENGINEERING PROJECT

CAMP IN BURKINA FASO

11



Camp in burkina faso contains 95 sets of 20ft' flatpack container houses. There are employee dining room, dormitory, public washroom, office and clinics. The camp has complete facilities containing bathroom, water system and electric system. We provide design, manufacture and help installation, offering a full array of services to customers.



ALUMINUM ROLLING SHUTTER DOOR

Advantage

Durability: double aluminum slab, corrosion resistance, stable structure, strong windproof system, reliable operation, dustproof, anti-cut.

Exquisite appearance: soft colors, elegant style, is the best choice for car, villas, commercial buildings, plant modernization.

Quick installation: no need to change the building's structure, installation is simple and quick.

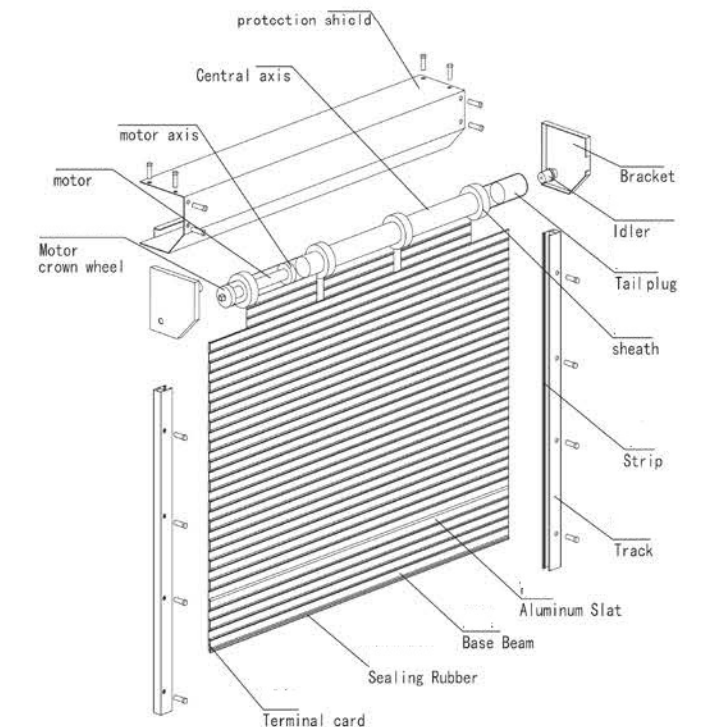
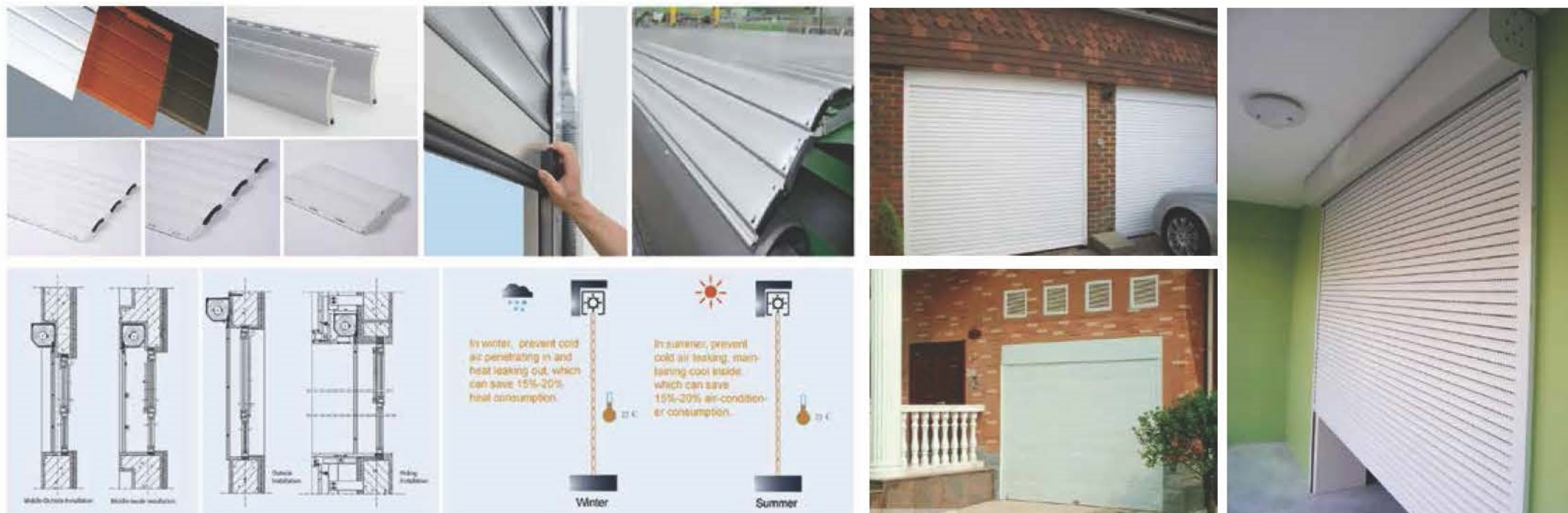
Space saving: shutter open way saves top space, prevents dirt, rain or other debris coming.

Safety and Noiseless: remote, manual, zipper control and etc. It is safe, fast and no noise.



Standard Specification

Material	55 Type (0.5mm-1.0mm) 77 Type (0.7mm-1.0mm) 100 Type (1.2mm)
Wind Load	70km/h
Control way	Remote control/Manual/Mobile phone/ Network
Voltage/Frequency	230V/50HZ, 120V/60HZ, 380V/50HZ
Specification	W:3m x H:3m
Lifting speed	0.15m/s



AUSTRALIAN STYLE DOOR

Australian shop roller door could be open and closed easily even if children because of the unique balance system. The door body has a very good balance in any position, and quiet any time. Australian shop roller door is widely used in shops and shopping malls.

Advantage

1. Novel appearance, beautiful and generous, highperspectivity, a variety of colors can be customized.
2. Environmental for the Unique mute equipment designand
3. Superior sealing performance.
4. Cost-effective.



Standard Specification

Material	Color steel sheet
Wind Load	70km/h
Control way	Manual
Voltage/Frequency	230V/50HZ, 120V/60HZ
Specification	W:3.5m X H:3.5m
Thickness	0.4mm-0.6mm



WINDPROOF DOOR

The windproof door curtain plate is made of high strength galvanized plate, and they have the advantages of high strength, good rigidity and firm structure.

|Advantage|

- ◆ Quick installation, convenient assembly, which can be taken inside and outside with a variety of installation, make full use of the space on the top of it.
- ◆ Electric, manual, remote control and etc.
- ◆ It can solve the problem of the difficulty of installing a slope or a corner, applicable to any construction field.
- ◆ The wind resistance is strong: there is a wind resistant hook in the guide rail, which ensures that the curtain plate does not deviate from the guide rail in the strong wind.
- ◆ Superior performance: anti pry, dust, noise, rain, heat preservation, wind sand.



Standard Specification

Material	Steel sheet
Wind Load	100km/h
Control way	Remote control/Button/Manual/ Mobile phone/Network
Voltage/Frequency	230V/50HZ, 120V/60HZ
Specification	W:8m X H:8m
Thickness	1.0mm-1.2mm

INDUSTRIAL SECTIONAL DOOR

Industrial sectional door is a new type of automatic door which is widely used in large warehouses, factories and logistics centers.

[Advantage]

- ◆ Installation space is small, suitable for all space.
- ◆ Remote control, high degree of automation.
- ◆ It is not easy to fade, a variety of colors available.



Standard Specification

Material	Color steel plate+PU/Aluminum plate+PU/Aluminum alloy+PU
Wind Load	110km/h
Control way	Remote control/Button/Manual/Mobile phone/Network
Voltage/Frequency	230V/50HZ, 380V/50HZ
Specification	W:6m X H:6m
Type	40 Anti Pinch Hand
Thickness	42mm
Substrate thickness	0.4mm-0.8mm
Lifting speed	0.25m/s



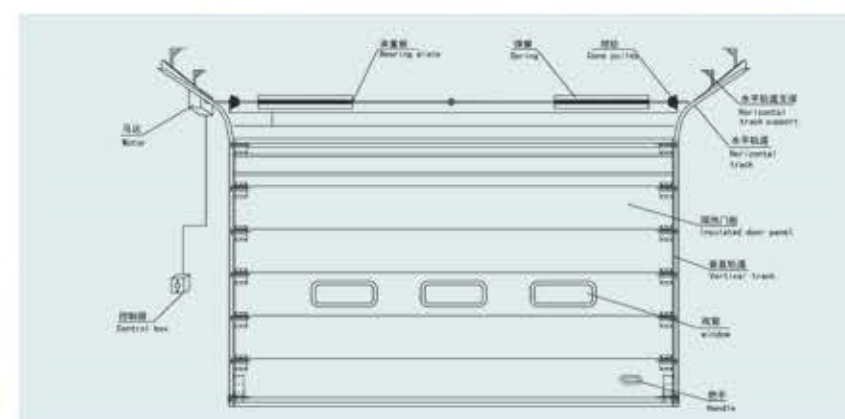
{ Vertical Lifting Industrial sectional door }



{ High Lifting Industrial section Door }



{ Standard Lifting Industrial section Door }



PERSPECTIVE SECTIONAL DOOR

Industrial perspective sectional doors are widely used in car sales, cleaning and service stations, as well as any building needs better lighting or visibility of commercial buildings.

|Advantage|

- ◆ The door frame is made of aluminum alloy by the method of positive polarity polishing;
- ◆ Floor board can choose industrial door, aluminum plate or other metal plate;
- ◆ Perspective lift door for the building to create a better lighting effect and more bright working environment.



HARD TURBINE OF RAPID DOOR

The utility model relates to hard turbine of quickly door which is a novel metal industrial door with the advantages of environmental protection, energy saving, sealing, high efficiency, wind resistance, durability and theft prevention.

Advantage

- ◆ Door body with a unique thermal insulation structure design, with good insulation, light, strong, high speed and etc.
- ◆ Easy to use and operate, high reliability, beautiful appearance.
- ◆ Low maintenance cost.
- ◆ Control system is with the new DSP chip as the core, could use without obstacles more than 150 thousand times a year.



Standard Specification

Material	Color steel plate+PU/Stainless steel+PU Aluminum plate+PU/Aluminum alloy+PU
Wind Load	110km/h
Control way	Buttons, remote controls, infrared rays, rader, pull ropes, geomagnetism
Specification	230V/50HZ, 380V/50HZ
Opening Speed	0.6-1.5m/s
Closing Speed	0.6m/s

FLEXIBLE LIFTING DOOR

Flexible Lifting Door is high performance wind-resistance high speed door, which is widely used in buildings of large dimension and span.

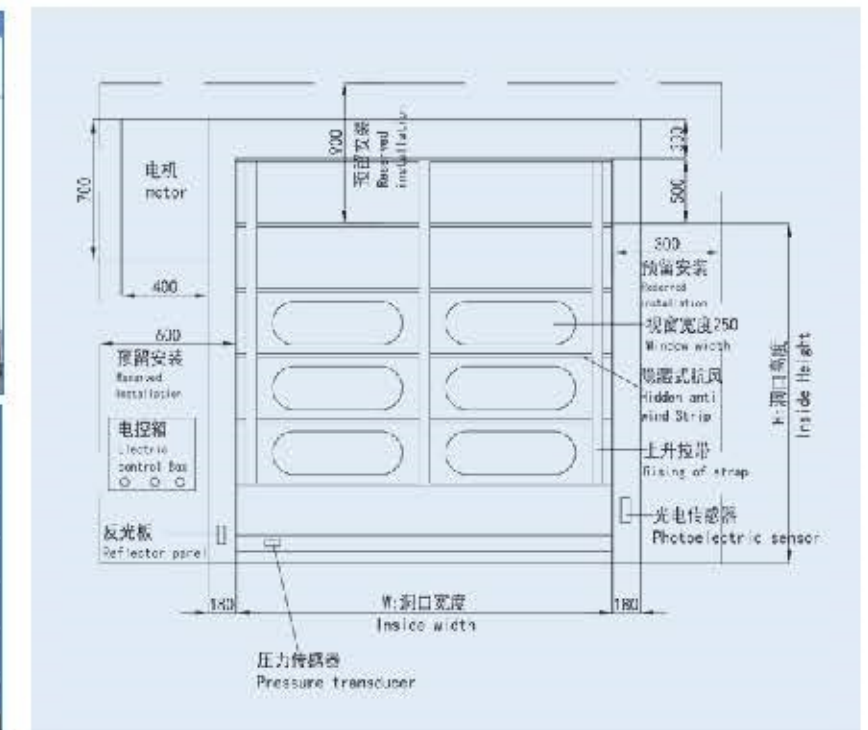
Advantage

- ◆ Suitable for door opening sizes against wind pressure positive or negative $<65\text{kg/㎡}$.
- ◆ Door curtain is made by sectional type curtain, which is filled with high density polyester fiber(1.0mm thick), transparent PVC window (1.5mm thick).
- ◆ Portal frame structure made by 2mm thick high-quality corrosion of cold rolled steel plate, color painting spray, in compact appearance, beautiful and durable.
- ◆ Control box: IP55 box is compatible with all kinds of protection devices, which can be used to control the PLC, and the overall safety of the vehicle and goods by using the digital program; blackout manual rocker, can be easily opened or closed.
- ◆ Running speed: Switch speed in 0.6m/s; Manual operation by pull shaft(optional) and manual rocker in case of power failure.



Standard Specification

Material	PVC polyester mesh belt fabric
Wind Load	150km/h
Control way	Remote control/Manual
Voltage/Frequency	230V/50HZ 380V/60HZ
Specification	W:12m x H:12m



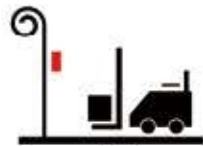
HIGH-SPEED ROLL-UP DOOR

High-speed roll-up door is widely used in food, medicine, electronic, printing and other industries. It adopts integral design, hidden volume open mode; It has the advantages of insulation, moisture, dust, insect proof and sound insulation. In particular, the opening speed can reach 2.5 meters per second, which ensures the effective use of isolation and frequent access.



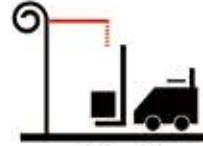
Standard Specification

Material	PVC polyester mesh belt fabric
Wind Load	120km/h
Control way	Automatic/Remote control/ Manual/Magnetic pull rope
Voltage/Frequency	230V/50HZ 380V/50HZ
Specification	W:4m X H:4m
Opening Speed	0.6-2.5m/s
Closing Speed	0.6m/s



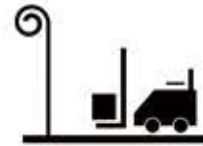
Push Button

Standard Push Button for separate control of both operation directions.



Pull Switch

Pull switch with plastic pull cord, horizontal or vertical fitting possible.



Induction Loops

2-channel plug-in print suitable for two separate induction loops, supplied with loop cable.



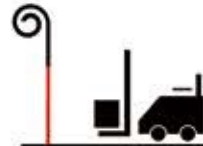
Linkage

By activating the two door linkage, can provide good insulation against air convection.



Radar

Radar movement and presence detection.



Sensor

Sensor installed around 2-3 meters front of the door, with sensor controlled door opening operation



Remote Control

4-button transmitter for remote control in both operational directions.



Open Degree

Door opening height can be adjusted by the passing vehicle



INDUSTRIAL SLIDING DOOR

Industrial sliding door is one of hangar doors to adapt to the civil aviation hangar, military, helicopter hangar, dock and other large hangar door needs. Automatic industrial sliding doors are used as aircraft parking garages, aircraft, aircraft assembly room, laboratory rocket production base, arsenal, shipyards and other functions. Xinguangzheng Industrial doors are used in the Beijing xijiao hangar hangar, Beijing military region Y - 10 downtime hangar, Niger military hangar and many other important hangar projects all over the world.



Standard Specification

- ◆ Custom made size and various operating system can meet special needs of the project.
- ◆ Door frame is made by special steel profile, door panel is with insulation which make the whole door system strong, good windproof, insulated and corrosion resistant.
- ◆ PLC control system is available, man-machine interaction operating interface could be set to control door location and status all the time.
- ◆ Door is equipped with sound and light warning, pneumatic safety along, linkage protection and many other security features, which can effectively ensure the safety in the process of use.
- ◆ The driving part adopts frequency control which makes opening and closing in low noise and smooth operation.
- ◆ Special skylight, chanel door, snow melting system and etc are available according to customer requirements.



Standard Specification

Material	Steel frame + Color steel sheet/Steel frame + Glass
Wind Load	160km/h
Control way	Remote control/Manual
Voltage/Frequency	230V/50HZ, 380V/50HZ
Specification	W:350m x H:26m
Opening Speed	0.06-0.25m/s



MULTI SEGMENT SECTIONAL LIFTING DOOR



Multi segment sectional lifting door is composed of six parts: door body system, track system, counter weight system, sealing system, open door machine system and drive system.

Door plate is high strength and multiple linkage. Manual or electric control are for your choice.

Normal multi - stage lift door adopts counterweight balance. The counterweight is guided, safe and reliable, low failure rate. The special large and super large multi section lifting door adopts the field power balance mode which saves the space occupied by the counterweight effectively.



FOLDING DOOR

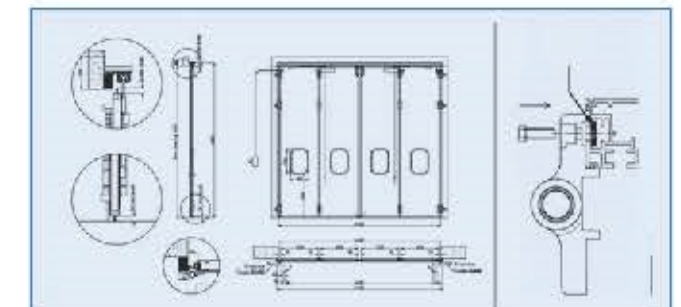
| Structure and advantage |

1. Electric folding door with new type crank arm opening machine and control box is more powerful and excellent performance.
2. Flexible mode of operation. Manual and electric control is easily switched.
3. Electrical control delay protection device is equipped, remote Control system could be custom made.
4. Three ethylene propylene seal and special bottom end sealing tops are equipped for longer service life.
5. Airbag protection is available to ensure any people or car passing safety.
6. Door frame is high-quality steel or aluminum profiles, strong and corrosion-resistant.
7. Color sandwich panel door body is strong, a variety of Windows and pressure gap on top are available to make the door better weather resistant, heat insulation, fireproof, soundproof, good sealing and etc.



Standard Specification

Material	Steel frame + EPS/Steel frame+Rock wool
Wind Load	140km/h
Control way	Remote control/Manual
Voltage/Frequency	230V/50HZ, 380V/50HZ
Specification	W50 x H6
Opening Speed	0.05m/s-0.25m/s



VERTICAL BI-FOLDING DOOR

Vertical Bi-folding Door is made of steel structure, supplemented by matched surface decoration. It can automatically open, close and lock, can remote control.

Vertical Bi-folding Door is outer folded, only takes up the upper space but no floor space. It is suitable for large span door and not enough door space on both sides or upper in the building. It is the best solution for general helicopter library and large garage door.

Because of its beautiful appearance, blendable architectural style, safe and reliable operation, low noise, vertical Bi-folding Doors are widely used in curtain structure buildings.



Standard Specification

Material	Steel steel + PU
Wind Load	150km/h
Control way	Remote control/Manual
Voltage/Frequency	230V/50HZ, 380V/50HZ
Specification	W:40m x H:10m



SUSPENDED DOOR

Suspended door is a kind of hanging door with no wheels contacting with the ground, no running track or no embedded guide rail.

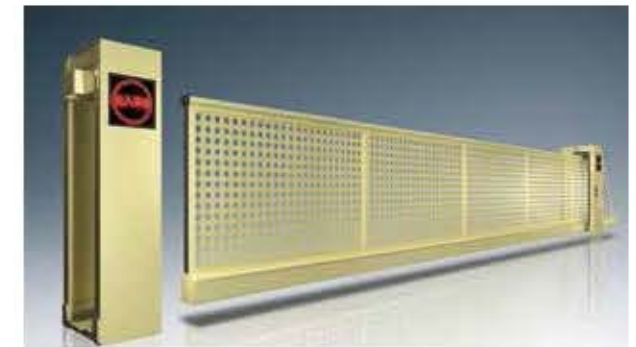
| Advantages |

1. High strength carbon steel or aluminum alloy frame is quite strong and rich colors for choice.
2. No track or wheel hanging system is running smoothly with low noise.
3. Because of no obstacle in ice and snow area, the door is especially suitable for cold regions.
4. Multiple safety protection: double infrared anti pinch protection, anti-collision, anti pinch protection belt, standard anti climbing alarm system and etc.
5. Manual operate if no power.
6. It could be easy assembled all by bolts on site.



Standard Specification

Material	Aluminum alloy/Galvanized steel
Wind Load	70km/h
Control way	Remote control/Manual
Voltage/Frequency	230V/50HZ, 230V/60HZ
Specification	W:15m x H:2m



BARRIER GATE

The gate also called car, is specially used for road vehicle travel restrictions the channel entrance management equipment. Electric gate can be implemented separately through the lifting lever of wireless remote control, can also be through the parking lot management system (i.e. IC card management system) to implement automatic state management, admission card vehicles, off, automatic charge parking fees after the release of the vehicle. The existing gate integration movement, clutch device, intelligent anti lift resistance function, return device, heating function (to ensure that the use of 40 degrees below zero in the environment), ventilation cooling system (to reduce the temperature of the motor), automatic clutch device, and anti-collision bar device. The speed of the rod varies from 0.8 seconds to 6 seconds. Length of 0-7 meters, depending on the actual channel width.

The utility model is composed of a gear box, a motor, or a hydraulic transmission mechanism, a balancing device, a case, a brake rod bracket, a brake rod, etc.

