

Main Material Introduction

1. EPS Sandwich Panel

EPS Sandwich Panel		Pictures:
<p>Wall Panel Double-side 0.2mm(0.3mm,0.4mm,0.5mm and so on)thickness color steel, 75mm EPS (8kg/m³,10kg/m³,12kg/m³ and so on)</p>		
<p>Roof Panel Double-side 0.2mm(0.3mm,0.4mm,0.5mm and so on)thickness color steel, 75mm EPS (8kg/m³,10kg/m³,12kg/m³ and so on)use eave coating for running water and snow</p>		
<p>Built-in U Steel Channel used as frame Double-side 0.2mm(0.3mm,0.4mm,0.5mm and so on) thickness color steel, 75mm EPS (8kg/m³,10kg/m³,12kg/m³ and so on), Galvanized U Channel cover the four sides</p>		
<p>Finished Panel</p>		
Advantage of EPS Sandwich Panel		
<ol style="list-style-type: none">1.Lowest Price2.Light Weight3.Good Thermal and Noise Insulation4.Water Proof and Fire Prevention5.Long Service Life6.Various thickness:50mm,75mm,100mm,150mm,200mm,210mm and so on		

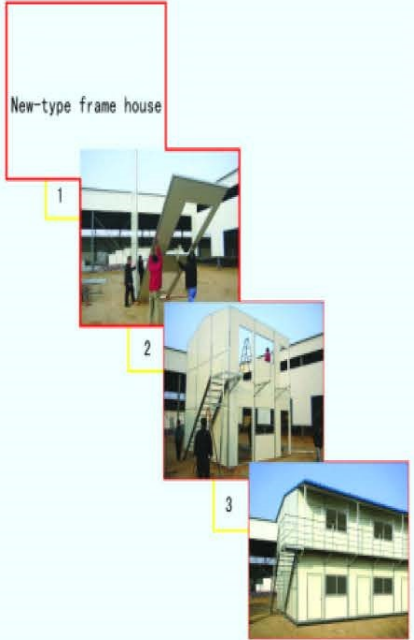
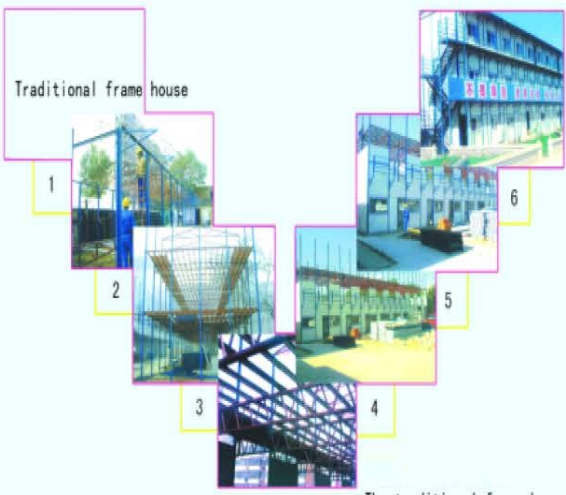
2. Rock Wool Sandwich Panel

Rock Wool Sandwich Panel	Pictures:
<p data-bbox="236 387 373 416">Wall Panel</p> <p data-bbox="236 470 512 499">Double-side color steel</p>	
<p data-bbox="236 719 373 748">Roof Panel</p> <p data-bbox="236 801 512 831">Double-side color steel</p>	
<p data-bbox="549 1061 1134 1095" style="text-align: center;">Advantages of Rock Wool Sandwich Panel</p> <ol data-bbox="236 1144 1283 1301" style="list-style-type: none"><li data-bbox="236 1144 571 1173">1. Better Fire Prevention<li data-bbox="236 1182 743 1211">2. Good Thermal and Noise Insulation<li data-bbox="236 1220 507 1249">3. Long Service Life<li data-bbox="236 1258 1283 1301">4. Various thickness: 50mm, 75mm, 100mm, 150mm, 200mm, 210mm and so on.	

3. Various Door and Window

Door	Pictures
Burglar-proof Door	 The image shows a blue, heavy-duty door with a peephole and a handle. To its right is a small, white, hexagonal structure with a blue frame and a similar blue door, illustrating the application of such a door in a secure enclosure.
Composit Board Door	 The image shows a white, vertically-ribbed composite board door. To its right is a small, white, rectangular structure with a blue roof and a white door with a window, illustrating the application of such a door in a secure enclosure.
Window	
PVC Steel Window	 The image shows two views of PVC steel windows. On the left, several white-framed windows are stacked. On the right, a window is installed in a structure, showing a view of a building and trees.
Aluminium Alloy Window	 The image shows a white-framed aluminium alloy window with a sliding mechanism, set against a light background.

The Differences Between New Design Prefab House and Traditional One:

Items	Traditional house	New Design Prefab House
<p>1.Installation and Disassembly.</p>	<p>The design and installation of traditional house is much more complex, and there are more workers needed for building. This kind of house is waste of time and worker cost.</p>	<p>New design prefab house just need simple tools. Each worker can install 30-40 square meters per day.6 workers can finish 400 square meters in 2 days. it's especially suitable for emergency project.</p>
<div style="display: flex; justify-content: space-around; align-items: flex-start;"> <div style="text-align: center;"> <p>New-type frame house</p>  <p>The new-type frame house enables a convenient and quick installation</p> </div> <div style="text-align: center;"> <p>Traditional frame house</p>  <p>The traditional frame house requires a cumbersome installation.</p> </div> </div>		

2. Thermal insulation

The wall panel thickness of traditional house is only 50mm .

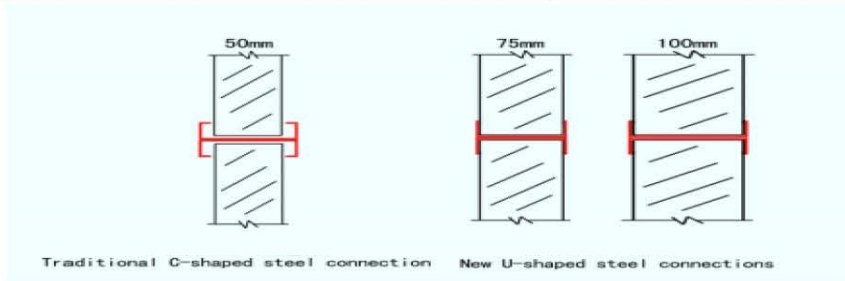
The wall panel thickness of new type prefab house can be 50mm,75mm,100mm,150mm,200mm and even more.



3. Tightness

The frame of traditional house is C channel. The joint face of C channel and composit board is so small, especially it's very difficult to determine the inner diameter of C channel. There will be a gap between C channel and composit board. Then it's not good for tightness.

The frame of new type prefab house is made of reinforced U channel. The joint face of U channel and composit board can reach 30mm.so it's good to prevent wind and rain.



4. Corrosion resistance

The frame of traditional house is made of steel ,without rust cleaning and will be used directly after painting. The material will be rusted in a short time and shorten the service life of the house.

The frame of new type prefab house and bolts are made of galvanized material which is corrosion-resistant and stainless. All of this greatly improve the service life of the house.



prototype



new type

5. Appearance

The traditional house looks complex because of batter brace and it's a little difficult to open the window.

There is no batter brace on the new type prefab house and it's very easy to open the window. It looks more clear and beautiful.



prototype



new type



1. Burma Single Layer Dormitory Project

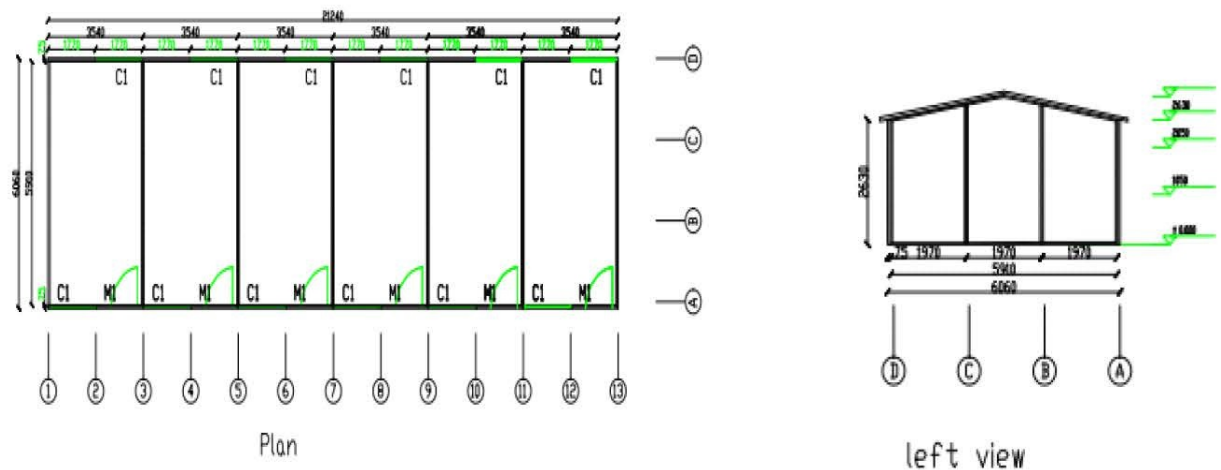
Model No.: XS-HH-01 House Size: 21240mm*6060mm*2630mm (L*W*H)

Layout : total six rooms ; each room size is :3540mm*6060mm*3210mm

Outer Picture:



CAD Drawing:



Material Details

N o.	Part Name	Material	Specification
1	External Wall	EPS Sandwich Panel	75mm thickness,0.3mm color steel,8kg/m ³
2	Interior Wall	EPS Sandwich Panel	75mm thickness,0.3mm color steel,8kg/m ³
3	Roof	EPS Sandwich Panel	75mm thickness,0.3mm color steel,8kg/m ³
4	Door	Steel security door	950mm*2000mm
5	Door	Sliding Door	
6	Window	PVC Steel Window	1687mm*1000mm
7	Packing	One 40FT HQ container can be loaded 160-200m ²	
8	Delivery Time	3-5 days	

The Advantages of This House

- 1.Safe and reliable structure
- 2.Can be used anywhere without disassembly and installation
- 3.Nice appearance
- 4.Flexible layout
- 5.Long service life

2. Saudi Arabia Double-layer Dormitory Project

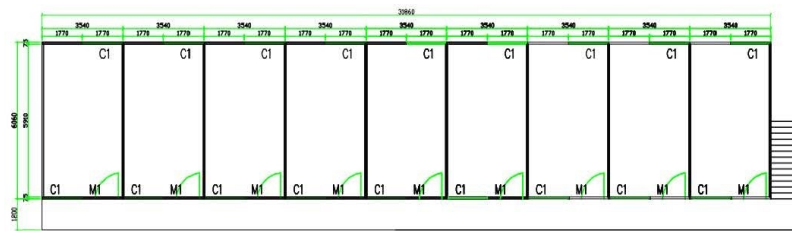
Model NO.:XS-HH-02 House Size: 31860mm*6060mm*5637mm (L*W*H)

House Inner Layout : each room size is 3540mm*6060mm*2550mm

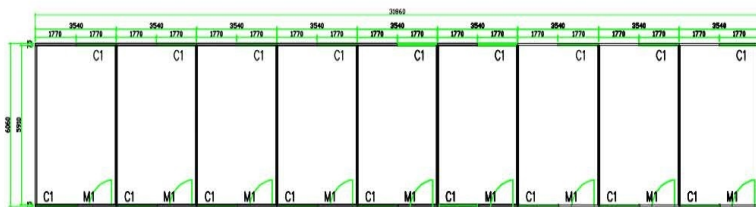
Outer Picture:



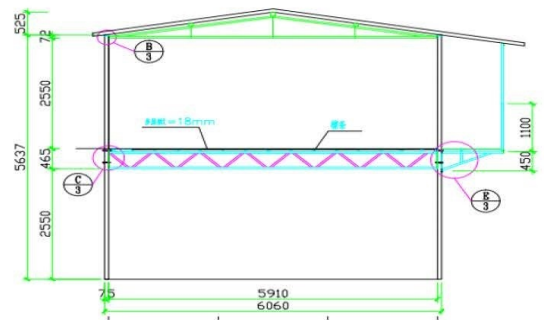
CAD Drawing:



Second floor



First floor



Material Details

No.	Part Name	Material	Specification
1	External Wall	EPS Sandwich Panel	75mm thickness,0.3mm color steel,8kg/m ³
2	Interior Wall	EPS Sandwich Panel	75mm thickness,0.3mm color steel,8kg/m ³
3	Roof	EPS Sandwich Panel	75mm thickness,0.3mm color steel,8kg/m ³
4	Door	Steel security door	950mm*2000mm
5	Door	Sliding Door	
6	Window	PVC Steel Window	1687mm*1000mm
7	Packing	One 40FT HQ container can be loaded 160-200m ²	
8	Delivery Time	3-5 days	

The Advantages of This House

- 1.Safe and reliable structure
- 2.Can be used anywhere without disassembly and installation
- 3.Nice appearance
- 4.Flexible layout
- 5.Long service life

3. Uruguay 8.72 m² Guard House Project

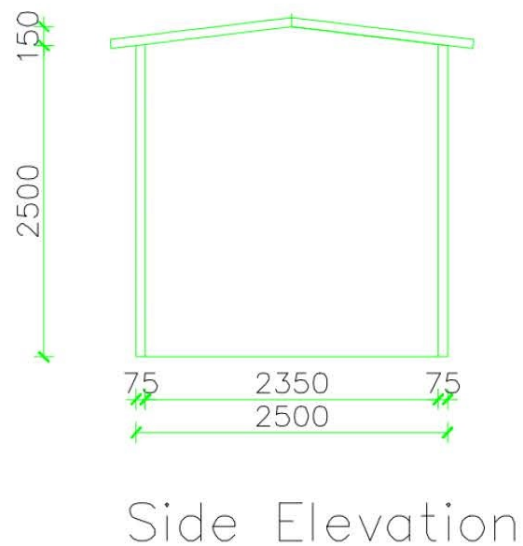
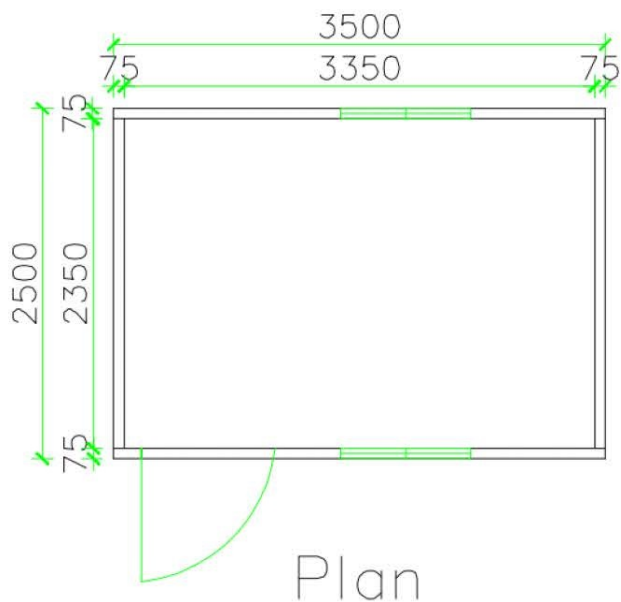
Model No.: XS-HH-0101 House Size: 2500mm*3500mm*2500mm (L*W*H)

House Inner Layout : 1 office

Outer Picture:



CAD Drawing:



Material Details

No.	Part Name	Material	Specification
1	External Wall	EPS Sandwich Panel	75mm thickness,0.3mm color steel,8kg/m ³
2	Interior Wall	EPS Sandwich Panel	75mm thickness,0.3mm color steel,8kg/m ³
3	Roof	EPS Sandwich Panel	75mm thickness,0.3mm color steel,8kg/m ³
4	Door	Steel security door	950mm*2000mm
5	Door	Sliding Door	
6	Window	PVC Steel Window	1687mm*1000mm
7	Packing	One 40FT HQ container can be loaded 160-200m ²	
8	Delivery Time	3-5 days	

The Advantages of This House

- 1.Safe and reliable structure
- 2.Can be used anywhere without disassembly and installation
- 3.Nice appearance
- 4.Flexible layout
- 5.Long service life

4. Jordan 20 m² Prefab House Project

Model No.:XS-HH-0201 House Size: 5469mm*3940mm*2630mm (L*W*H)

House Inner Layout : 1 bedrooms,1 bathroom and 1 living room

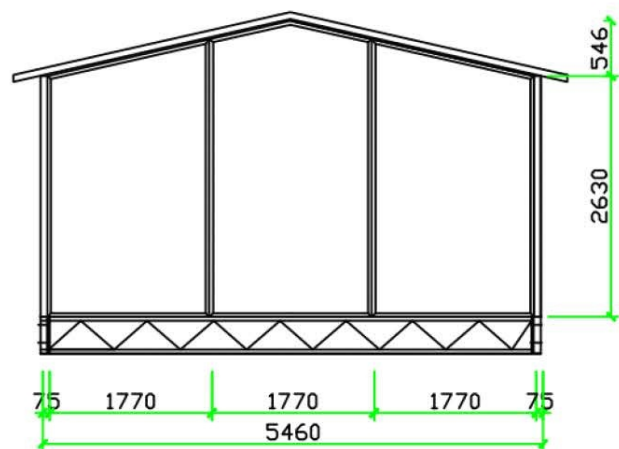
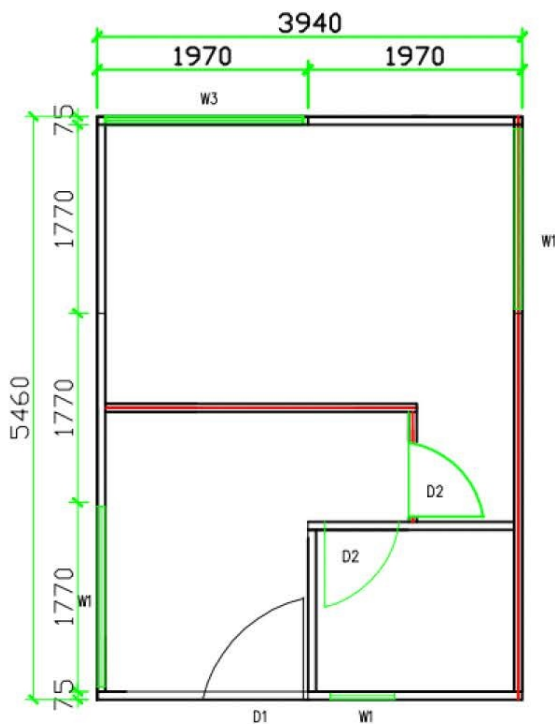
Outer Picture:



Inner Picture:



CAD Drawing:



Gable wall plan

Material Details

No.	Part Name	Material	Specification
1	External Wall	EPS Sandwich Panel	75mm thickness,0.3mm color steel,8kg/m3
2	Interior Wall	EPS Sandwich Panel	75mm thickness,0.3mm color steel,8kg/m3
3	Roof	EPS Sandwich Panel	75mm thickness,0.3mm color steel,8kg/m3
4	Door	Steel security door	950mm*2000mm
5	Door	Sliding Door	
6	Window	PVC Steel Window	1687mm*1000mm
7	Packing	One 40FT HQ container can be loaded 160-200m ²	
8	Delivery Time	3-5 days	

The Advantages of This House

- 1.Safe and reliable structure
- 2.Can be used anywhere without disassembly and installation
- 3.Nice appearance
- 4.Flexible layout
- 5.Long service life

5. Japan 30 m² Prefab House Project

Model No.:XS-HH-0301 House Size: 5000mm*4700mm*2450mm (L*W*H)

House Inner Layout : 2 bedrooms,1 bathroom and 1 living room

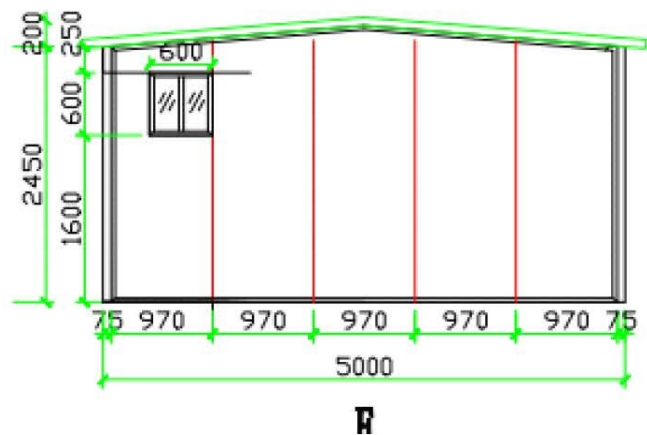
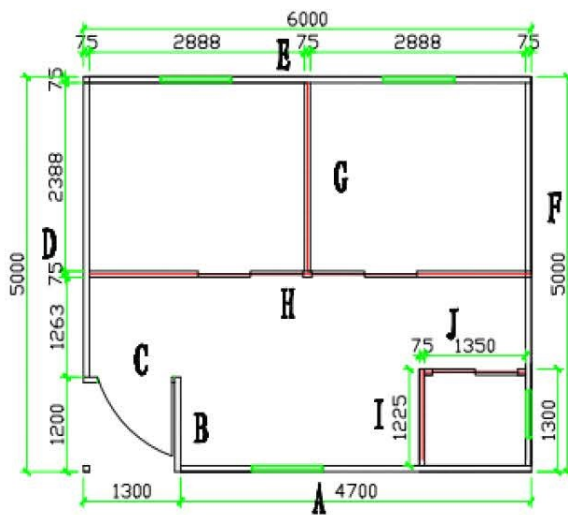
Outer Picture:



Inner Picture:



CAD Drawing:



Material Details

No.	Part Name	Material	Specification
1	External Wall	EPS Sandwich Panel	75mm thickness,0.3mm color steel,8kg/m3
2	Interior Wall	EPS Sandwich Panel	75mm thickness,0.3mm color steel,8kg/m3
3	Roof	EPS Sandwich Panel	75mm thickness,0.3mm color steel,8kg/m3
4	Door	Steel security Door	950mm*2000mm
5	Door	Sliding Door	
6	Window	PVC Steel Window	1687mm*1000mm
7	Packing	One 40FT HQ container can be loaded 160-200m ²	
8	Delivery Time	3-5 days	

The Advantages of This House

- 1.Safe and reliable structure
- 2.Can be used anywhere without disassembly and installation
- 3.Nice appearance
- 4.Flexible layout
- 5.Long service life

6. Jordan 30 m2 Prefab House Project

Model No.:XS-HH-0302 House Size: 5910mm*5460mm*2630mm (L*W*H)

House Inner Layout: 2 bedrooms,1 bathroom and 1 living room

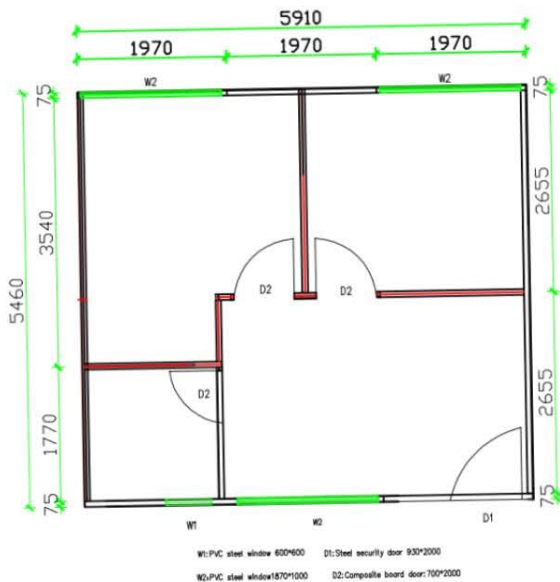
Outer Picture:



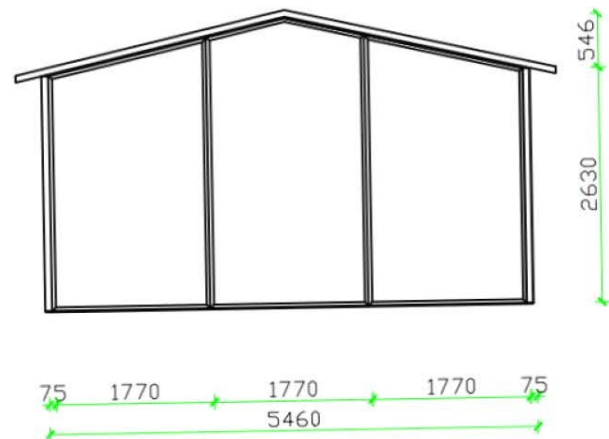
Inner Picture:



CAD Drawing:



Floor plan



Gable wall plan

Material Details

No.	Part Name	Material	Specification
1	External Wall	EPS Sandwich Panel	75mm thickness,0.3mm color steel,8kg/m ³
2	Interior Wall	EPS Sandwich Panel	75mm thickness,0.3mm color steel,8kg/m ³
3	Roof	EPS Sandwich Panel	75mm thickness,0.3mm color steel,8kg/m ³
4	Door	Steel security Door	950mm*2000mm
5	Door	Composite board Door	800mm*2000mm
6	Window	PVC Steel Window	1870mm*1000mm
7	Window	PVC Steel Window	930mm*600mm
8	Packing	One 40FT HQ container can be loaded 160-200m ²	
9	Delivery Time	3-5 days	

The Advantages of This House

- 1.Safe and reliable structure
- 2.Can be used anywhere without disassembly and installation
- 3.Earthquake proof
- 4.Flexible layout
- 5.Long service life

7. Korea 35.81 m² Prefab House Project

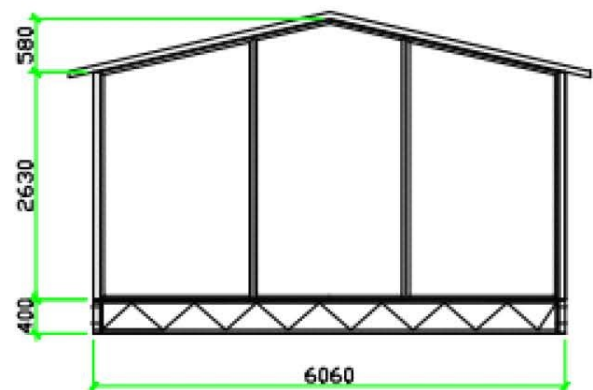
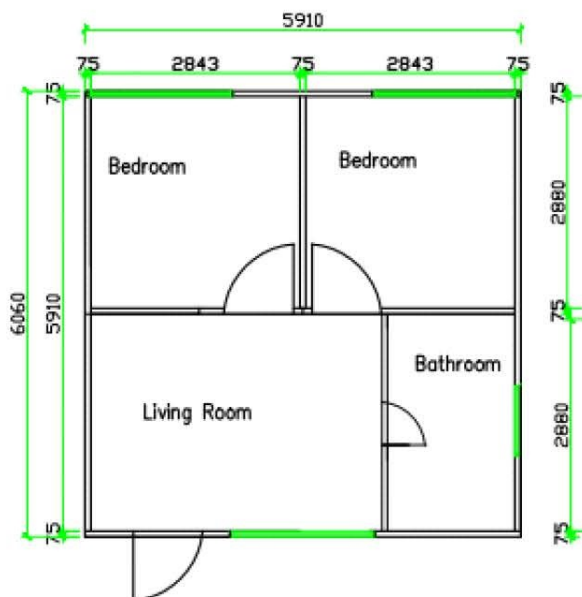
Model No.:XS-HH-0303 House Size: 5910mm*6060mm*2630mm (L*W*H)

House Inner Layout: 2 bedrooms,1 bathroom and 1 living room

Outer Picture:



CAD Drawing:



Side View

Material Details

No.	Part Name	Material	Specification
1	External Wall	EPS Sandwich Panel	75mm thickness,0.3mm color steel,8kg/m ³
2	Interior Wall	EPS Sandwich Panel	75mm thickness,0.3mm color steel,8kg/m ³
3	Roof	EPS Sandwich Panel	75mm thickness,0.3mm color steel,8kg/m ³
4	Door	Steel security Door	950mm*2000mm
5	Door	Composite board Door	800mm*2000mm
6	Window	PVC Steel Window	1870mm*1000mm
7	Window	PVC Steel Window	930mm*600mm
8	Packing	One 40FT HQ container can be loaded 160-200m ²	
9	Delivery Time	3-5 days	

The Advantages of This House

- 1.Safe and reliable structure
- 2.Can be used anywhere without disassembly and installation
- 3.Earthquake proof
- 4.Flexible layout
- 5.Long service life

8. United States 40 m² Prefab House Project

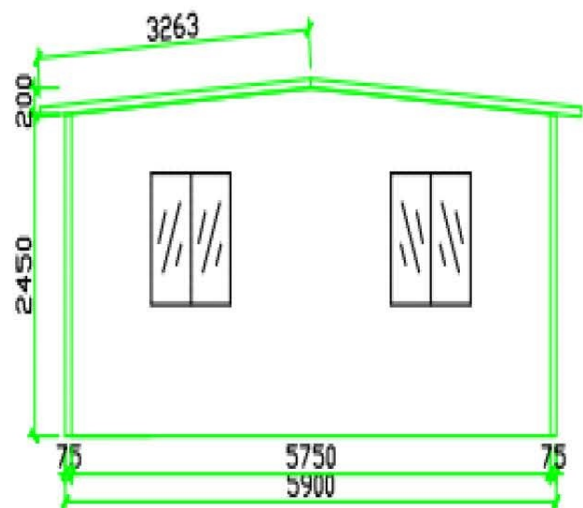
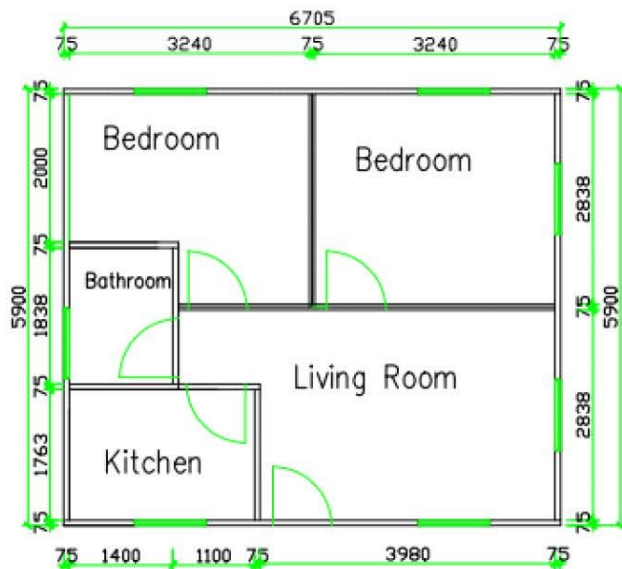
Model No.:XS-HH-0401 House Size: 6705mm*5900mm*2450mm (L*W*H)

House Inner Layout: 2 bedrooms,1 bathroom,1 kitchen and 1 living room

Outer Picture:



CAD Drawing:



Material Details

No.	Part Name	Material	Specification
1	External Wall	EPS Sandwich Panel	75mm thickness,0.3mm color steel,8kg/m ³
2	Interior Wall	EPS Sandwich Panel	75mm thickness,0.3mm color steel,8kg/m ³
3	Roof	EPS Sandwich Panel	75mm thickness,0.3mm color steel,8kg/m ³
4	Door	Steel security Door	950mm*2000mm
5	Door	Composit board Door	800mm*2000mm
6	Window	PVC Steel Window	930mm*1000mm
7	Packing	One 40FT HQ container can be loaded 160-200m ²	
8	Delivery Time	3-5 days	

The Advantages of This House

- 1.Safe and reliable structure
- 2.Can be reused for more than 10 times
- 3.Earthquake proof
- 4.Flexible layout
- 5.Long service life

9. South Africa 40m² Prefab House Project

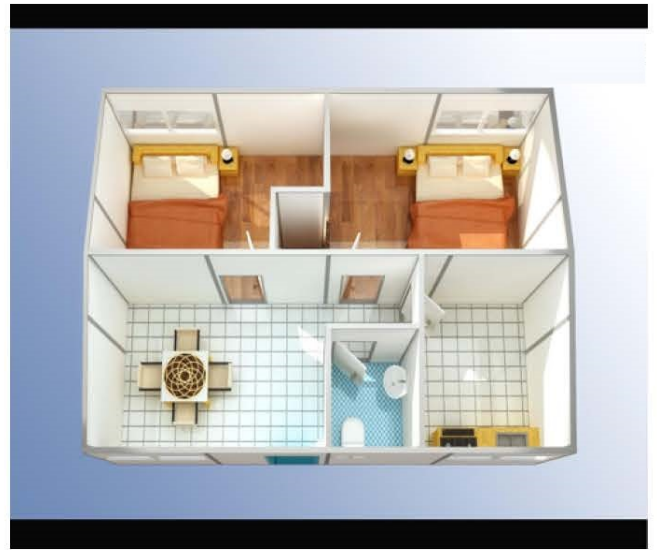
Model No.:XS-HH-0402 House Size: 7880mm*5460mm*2630mm (L*W*H)

House Inner Layout: 2 bedrooms,1 bathroom,1 kitchen and 1 living room

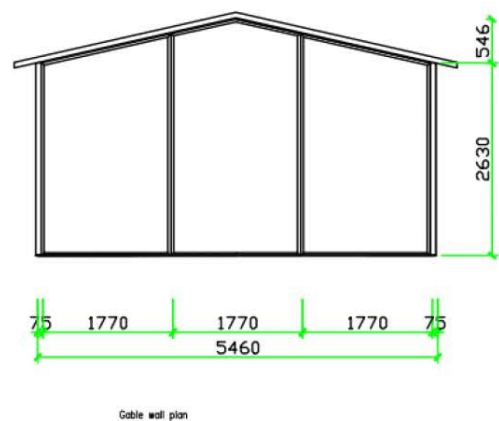
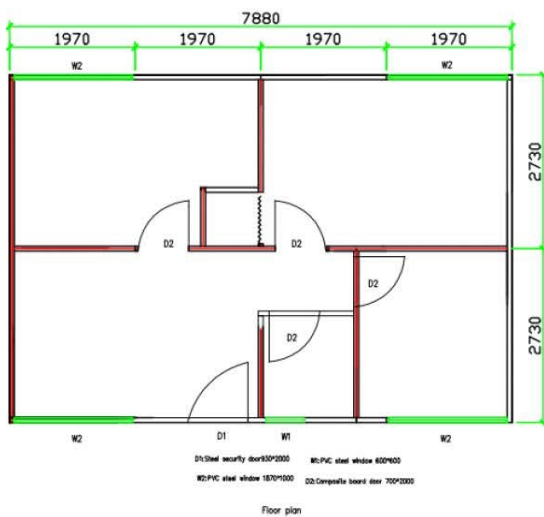
Outer Picture:



Inner Picture:



CAD Drawing:



Material Details

No.	Part Name	Material	Specification
1	External Wall	EPS Sandwich Panel	75mm thickness,0.3mm color steel,8kg/m3
2	Interior Wall	EPS Sandwich Panel	75mm thickness,0.3mm color steel,8kg/m3
3	Roof	EPS Sandwich Panel	75mm thickness,0.3mm color steel,8kg/m3
4	Door	Steel security Door	950mm*2000mm
5	Door	Composite board Door	800mm*2000mm
6	Window	PVC Steel Window	930mm*1000mm
7	Packing	One 40FT HQ container can be loaded 160-200m ²	
8	Delivery Time	3-5 days	

The Advantages of This House

- 1.Safe and reliable structure
- 2.Can be reused for more than 10 times
- 3.Earthquake proof
- 4.Flexible layout
- 5.Long service life

10. India 50 m² Prefab House Project

Model No.:XS-HH-0501 House Size: 8250mm*6060mm*2600mm (L*W*H)

House Inner Layout: 1 bedroom,1 bathroom,1 kitchen and 1 living room

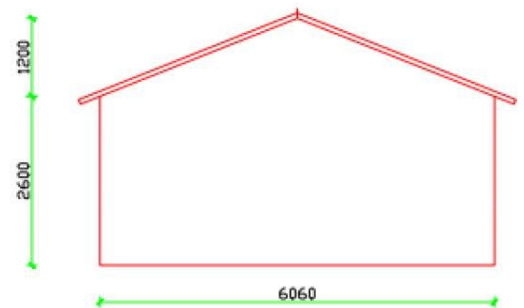
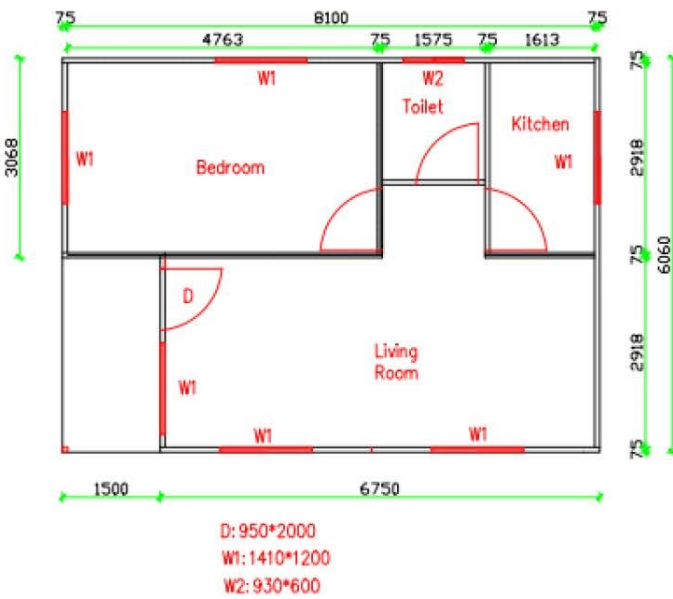
Outer Picture:



Inner Picture:



CAD Drawing:



Material Details

No.	Part Name	Material	Specification
1	External Wall	EPS Sandwich Panel	75mm thickness,0.3mm color steel,8kg/m ³
2	Interior Wall	EPS Sandwich Panel	75mm thickness,0.3mm color steel,8kg/m ³
3	Roof	EPS Sandwich Panel	75mm thickness,0.3mm color steel,8kg/m ³
4	Door	Steel security Door	950mm*2000mm
5	Door	PVC Steel Door	950mm*2000mm
6	Window	PVC Steel Window	1410mm*1200mm
7	Window	PVC Steel Window	930mm*600mm
8	Packing	One 40FT HQ container can be loaded 160-200m ²	
9	Delivery Time	3-5 days	

The Advantages of This House

- 1.Safe and reliable structure
- 2.Can be reused for more than 10 times
- 3.Earthquake proof
- 4.Flexible layout
- 5.Long service life
- 6.Fashionable Appearance

11. United States 60 m² Prefab House Project

Model No.: XS-HH-0601 House Size: 6960mm*8620mm*2500mm (L*W*H)

House Inner Layout: 2 bedrooms, 1 bathroom and 1 living room

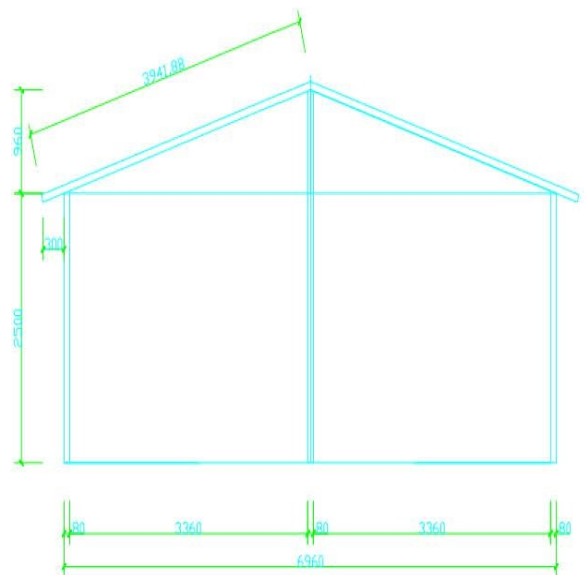
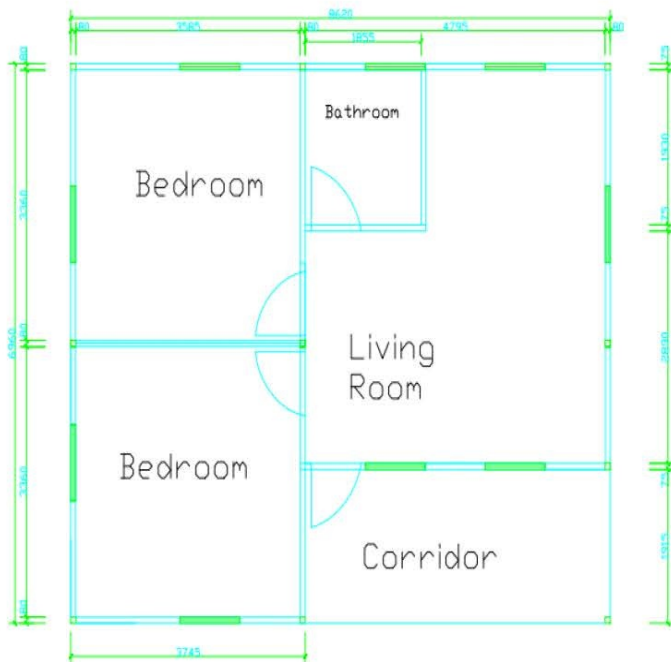
Outer Picture:



Inner Picture:



CAD Drawing:



Material Details

No.	Part Name	Material	Specification
1	External Wall	EPS Sandwich Panel	75mm thickness,0.3mm color steel,8kg/m ³
2	Interior Wall	EPS Sandwich Panel	75mm thickness,0.3mm color steel,8kg/m ³
3	Roof	EPS Sandwich Panel	75mm thickness,0.3mm color steel,8kg/m ³
4	Door	Steel security Door	950mm*2000mm
5	Door	Composite board Door	800mm*2000mm
6	Window	PVC Steel Window	1870mm*1000mm
7	Window	PVC Steel Window	930mm*6000mm
8	Packing	One 40FT HQ container can be loaded 160-200m ²	
9	Delivery Time	3-5 days	

The Advantages of This House

- 1.Safe and reliable structure
- 2.Can be used anywhere without disassembly and installation
- 3.Earthquake proof
- 4.Flexible layout
- 5.Long service life

12, Australian 60 m² house project.

Model No.:XS-HH-0602 House Size:10050mm*6080mm*2400mm (L*W*H)

House Inner Layout: 3 bedrooms,2 bathrooms,1 kitchen and 1 living room

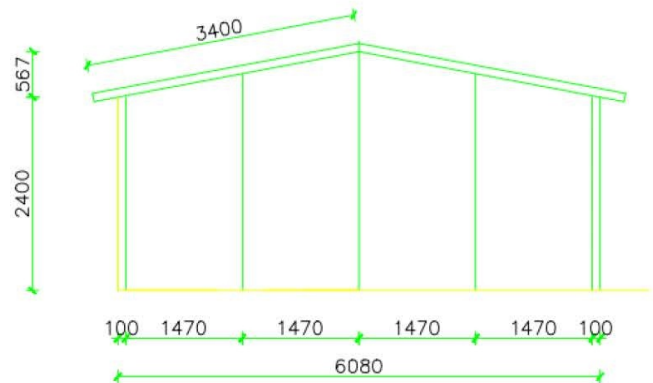
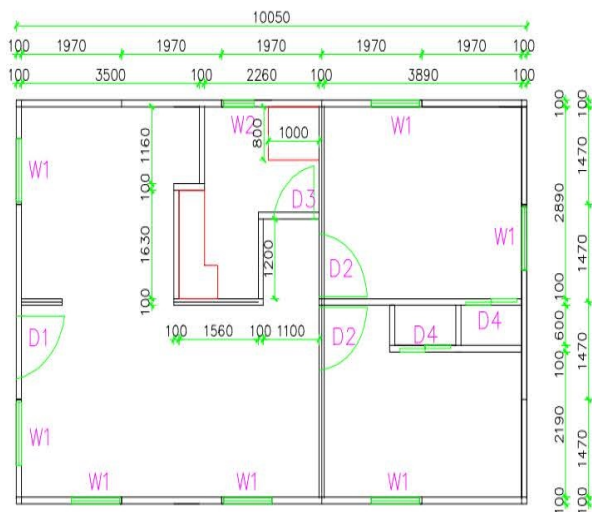
Outer Picture:



Inner Picture:



CAD Drawing:



Side Elevation

Material Details

No.	Part Name	Material	Specification
1	External Wall	EPS Sandwich Panel	75mm thickness,0.3mm color steel,8kg/m3
2	Interior Wall	EPS Sandwich Panel	75mm thickness,0.3mm color steel,8kg/m3
3	Roof	EPS Sandwich Panel	75mm thickness,0.3mm color steel,8kg/m3
4	Door	Steel security Door	950mm*2000mm
5	Door	Composite board Door	950mm*2000mm
6	Window	PVC Steel Window	1110mm*1000mm
7	Window	PVC Steel Window	930mm*600mm
8	Packing	One 40FT HQ container can be loaded 160-200m ²	
9	Delivery Time	3-5 days	

The Advantages of This House

- 1.Safe and reliable structure
- 2.Can be reused for more than 10 times
- 3.Earthquake proof
- 4.Flexible layout
- 5.Long service life
- 6.welcomed by so many customers

13. South Africa 40m2 Prefab House Project

Model No.:XS-HH-0701 House Size:885mm*8030mm*2630m m (L*W*H)

House Inner Layout: 2 bedrooms,2 bathrooms,1 kitchen and 1 living room

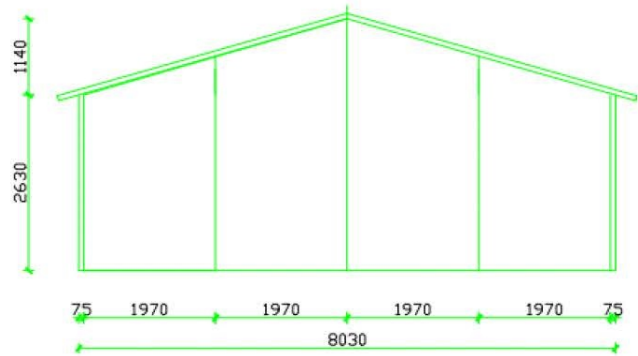
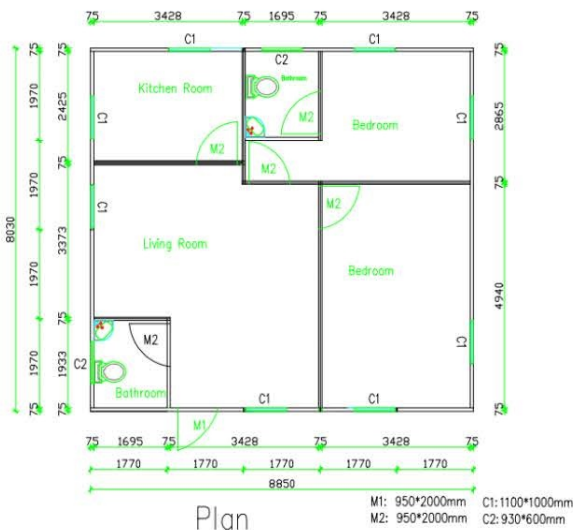
Outer Picture:



Inner Picture:



CAD Drawing:



Material Details

No.	Part Name	Material	Specification
1	External Wall	EPS Sandwich Panel	75mm thickness,0.3mm color steel,8kg/m3
2	Interior Wall	EPS Sandwich Panel	75mm thickness,0.3mm color steel,8kg/m3
3	Roof	EPS Sandwich Panel	75mm thickness,0.3mm color steel,8kg/m3
4	Door	Steel security Door	950mm*2000mm
5	Door	Composit board Door	950mm*2000mm
6	Window	PVC Steel Window	1110mm*1000mm
7	Window	PVC Steel Window	930mm*600mm
8	Packing	One 40FT HQ container can be loaded 160-200m ²	
9	Delivery Time	3-5 days	

The Advantages of This House

- 1.Safe and reliable structure
- 2.Can be reused for more than 10 times
- 3.Earthquake proof
- 4.Flexible layout
- 5.Long service life
- 6.welcomed by so many customers

14. Venezuela 71.06 m² Prefab House Project

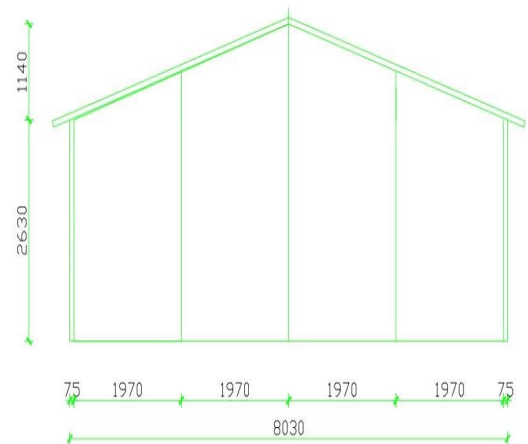
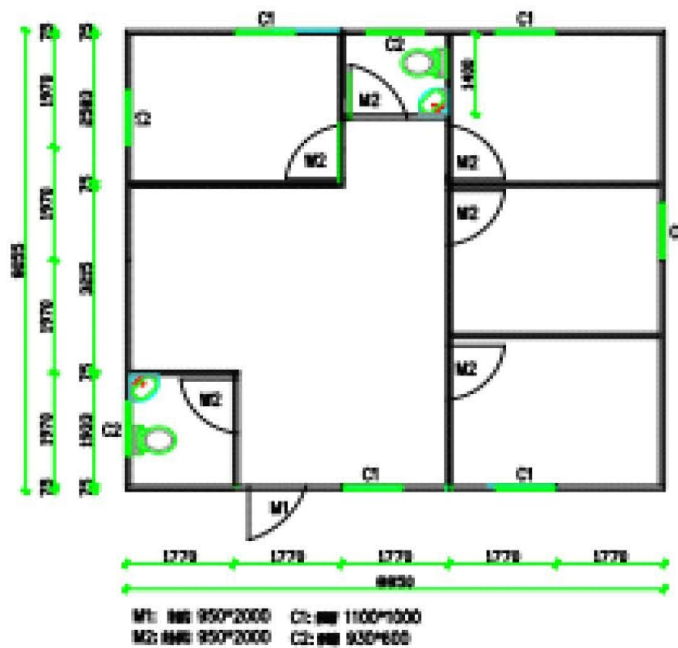
Model No.:XS-HH-0702 House Size:8850mm*8055mm*3770mm (L*W*H)

House Inner Layout: 3 bedrooms,2 bathrooms,1 kitchen and 1 living room

Outer Picture:



CAD Drawing:



Side Elevation

Material Details

No.	Part Name	Material	Specification
1	External Wall	EPS Sandwich Panel	75mm thickness,0.3mm color steel,8kg/m ³
2	Interior Wall	EPS Sandwich Panel	75mm thickness,0.3mm color steel,8kg/m ³
3	Roof	EPS Sandwich Panel	75mm thickness,0.3mm color steel,8kg/m ³
4	Door	Steel security Door	950mm*2000mm
5	Door	Composite board Door	950mm*2000mm
6	Window	PVC Steel Window	1110mm*1000mm
7	Window	PVC Steel Window	930mm*600mm
8	Packing	One 40FT HQ container can be loaded 160-200m ²	
9	Delivery Time	3-5 days	

The Advantages of This House

- 1.Safe and reliable structure
- 2.Can be reused for more than 10 times
- 3.Earthquake proof
- 4.Flexible layout
- 5.Long service life
- 6.welcomed by so many customers

15.Turkey 71.2 m2 Prefab House Project

Model No.:XS-HH-0703 House Size: 8850mm*8080mm*2400mm (L*W*H)

House Inner Layout: 2 bedroom,2 bathroom,1 kitchen and 1 living room

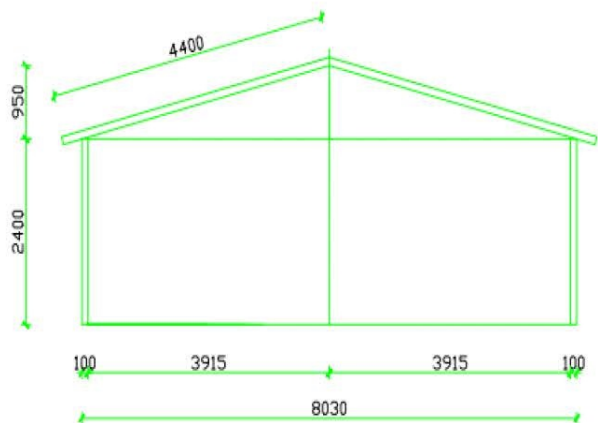
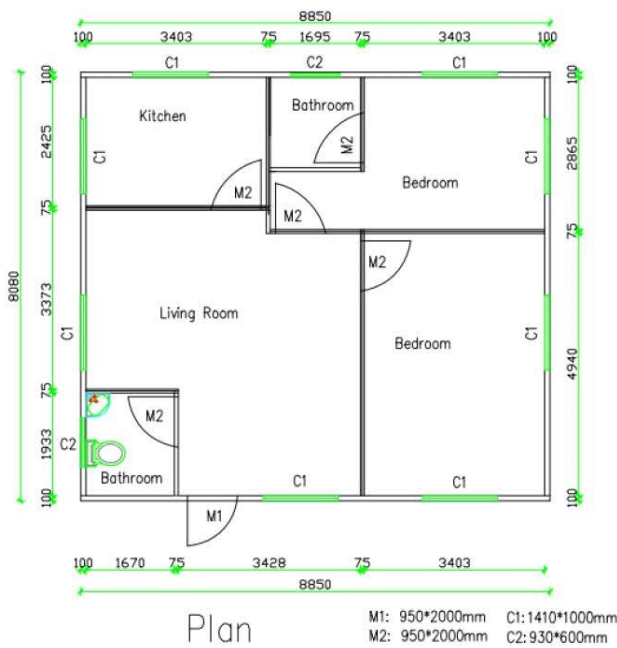
Outer Picture:



Inner Picture:



CAD Drawing:



Material Details

No.	Part Name	Material	Specification
1	External Wall	EPS Sandwich Panel	75mm thickness,0.3mm color steel,8kg/m ³
2	Interior Wall	EPS Sandwich Panel	75mm thickness,0.3mm color steel,8kg/m ³
3	Roof	EPS Sandwich Panel	75mm thickness,0.3mm color steel,8kg/m ³
4	Door	Steel security Door	950mm*2000mm
5	Door	Composite board Door	800mm*2000mm
6	Window	PVC Steel Window	1687mm*2000mm
7	Window	PVC Steel Window	1687mm*600mm
8	Window	PVC Steel Window	600mm*1200mm
9	Packing	One 40FT HQ container can be loaded 160-200m ²	
10	Delivery Time	3-5 days	

The Advantages of This House

- 1.Safe and reliable structure
- 2.Can be used anywhere without disassembly and installation
- 3.Earthquake proof
- 4.Flexible layout
- 5.Long service life

16.Australia 71.63 m² Prefab House Project

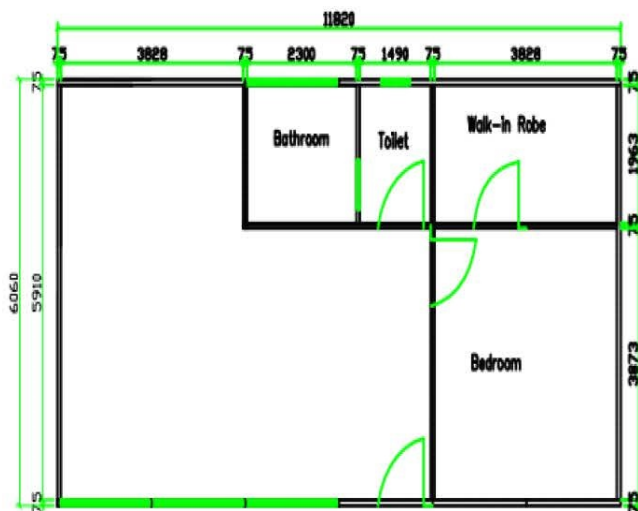
Model No.:XS-HH-0704 House Size: 11820mm*6060mm*2630mm (L*W*H)

House Inner Layout: 1 bedroom,1 bathroom, 1 toilet,1 walk-in robe and 1 living room

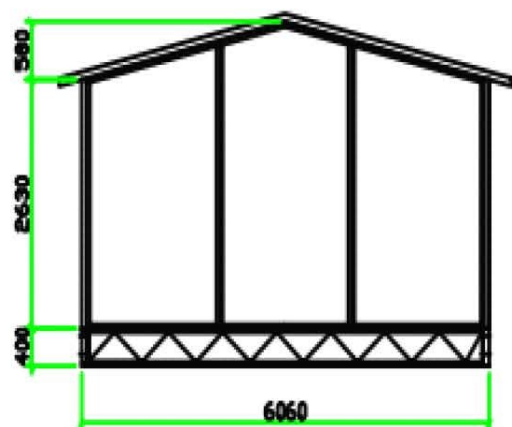
Outer Picture:



CAD Drawing:



Plan



Side View

Material Details

No.	Part Name	Material	Specification
1	External Wall	EPS Sandwich Panel	75mm thickness,0.3mm color steel,8kg/m ³
2	Interior Wall	EPS Sandwich Panel	75mm thickness,0.3mm color steel,8kg/m ³
3	Roof	EPS Sandwich Panel	75mm thickness,0.3mm color steel,8kg/m ³
4	Door	Steel security Door	950mm*2000mm
5	Door	Composite board Door	800mm*2000mm
6	Window	PVC Steel Window	1687mm*2000mm
7	Window	PVC Steel Window	1687mm*600mm
8	Window	PVC Steel Window	600mm*1200mm
9	Packing	One 40FT HQ container can be loaded 160-200m ²	
10	Delivery Time	3-5 days	

The Advantages of This House

- 1.Safe and reliable structure
- 2.Can be used anywhere without disassembly and installation
- 3.Earthquake proof
- 4.Flexible layout
- 5.Long service life

17.Canada 72.35 m2 Prefab House Project

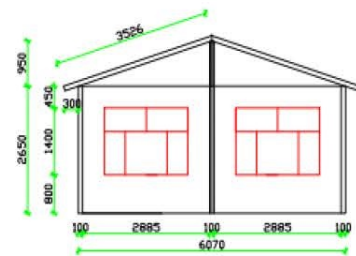
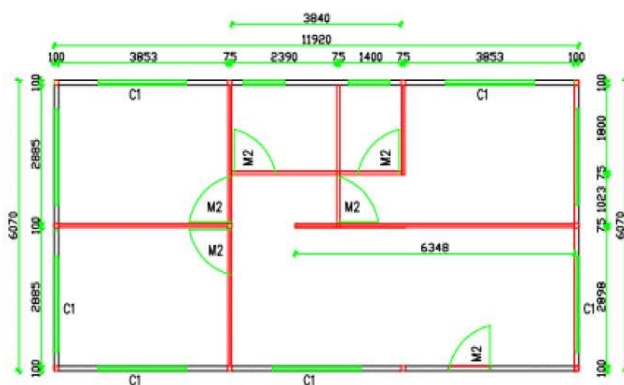
Model No.:XS-HH-0705 House Size: 11920mm*6275mm*2650mm (L*W*H)

House Inner Layout: 2 bedrooms,1 bathroom,1 storage room ,1 kitchen and dining room and 1 living room

Outer Picture:



CAD Drawing:



M1: 950*2000 C1: 1900*1400
M2: 930*2000 C2: 800*600

Material Details

No.	Part Name	Material	Specification
1	External Wall	EPS Sandwich Panel	100mm thickness,0.3mm color steel,8kg/m3
2	Interior Wall	EPS Sandwich Panel	75mm thickness,0.3mm color steel,8kg/m3
3	Roof	EPS Sandwich Panel	75mm thickness,0.3mm color steel,8kg/m3
4	Door	Steel security Door	950mm*2000mm
5	Door	Composite board Door	930mm*2000mm
6	Window	PVC Steel Window	1900mm*1400mm
7	Window	PVC Steel Window	800mm*600mm
8	Packing	One 40FT HQ container can be loaded 160-200m ²	
9	Delivery Time	3-5 days	

The Advantages of This House

- 1.Safe and reliable structure
- 2.Can be used anywhere without disassembly and installation
- 3.Earthquake proof
- 4.Flexible layout
- 5.Long service life
- 6.Beautiful appearance

18. Mozambique 75 m2 Prefab House Project

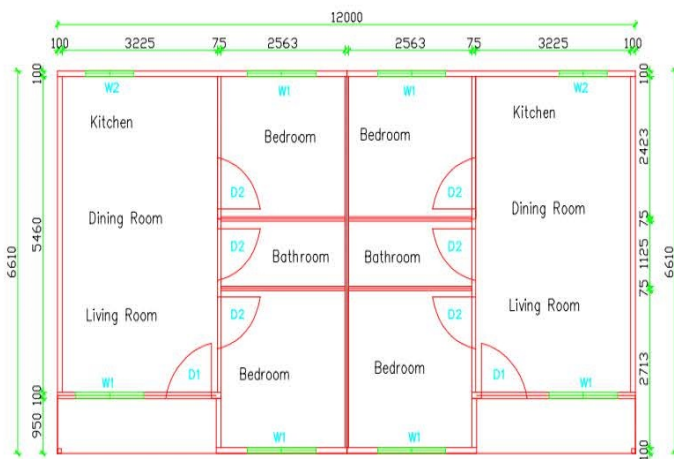
Model No.:XS-HH-0706 House Size: 12000mm*6610mm*2400mm (L*W*H)

House Inner Layout: 4 bedrooms,2 bathroom and 2 living room

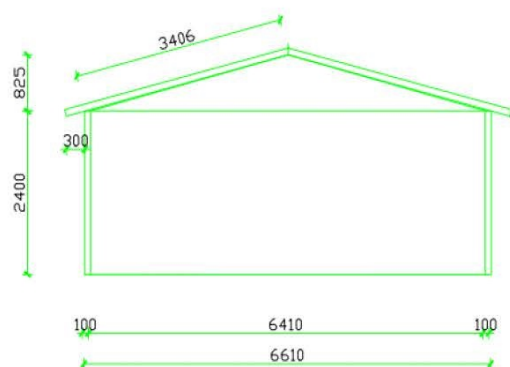
Outer Picture:



CAD Drawing:



Plan



Side Elevation

Material Details

No.	Part Name	Material	Specification
1	External Wall	EPS Sandwich Panel	75mm thickness,0.3mm color steel,8kg/m ³
2	Interior Wall	EPS Sandwich Panel	75mm thickness,0.3mm color steel,8kg/m ³
3	Roof	EPS Sandwich Panel	75mm thickness,0.3mm color steel,8kg/m ³
4	Door	Steel security Door	950mm*2000mm
5	Window	PVC Steel Window	1687mm*1000mm
6	Window	PVC Steel Window	1100mm*1000mm
7	Packing	One 40FT HQ container can be loaded 160-200m ²	
8	Delivery Time	3-5 days	

The Advantages of This House

- 1.Safe and reliable structure
- 2.Can be used anywhere without disassembly and installation
- 3.Earthquake proof
- 4.Flexible layout
- 5.Long service life
- 6.Welcomed by Turkey customers

19. Turkey 79.65 m² Prefab House Project

Model No.:XS-HH-0707 House Size: 9000mm*8850mm*2500mm (L*W*H)

House Inner Layout: 2 bedrooms,1 bathroom and 1 living room

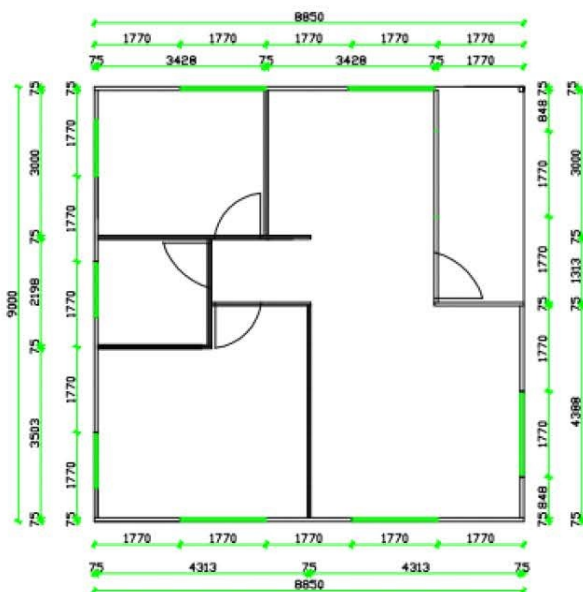
Outer Picture:



Inner Picture:



CAD Drawing:



Material Details

No.	Part Name	Material	Specification
1	External Wall	EPS Sandwich Panel	75mm thickness,0.3mm color steel,8kg/m3
2	Interior Wall	EPS Sandwich Panel	75mm thickness,0.3mm color steel,8kg/m3
3	Roof	EPS Sandwich Panel	75mm thickness,0.3mm color steel,8kg/m3
4	Door	Steel security Door	950mm*2000mm
5	Window	PVC Steel Window	1687mm*1000mm
6	Window	PVC Steel Window	1100mm*1000mm
7	Packing	One 40FT HQ container can be loaded 160-200m ²	
8	Delivery Time	3-5 days	

The Advantages of This House

- 1.Safe and reliable structure
- 2.Can be used anywhere without disassembly and installation
- 3.Earthquake proof
- 4.Flexible layout
- 5.Long service life
- 6.Welcomed by Turkey customers

20.South Africa 83.04 m² Prefab House Project

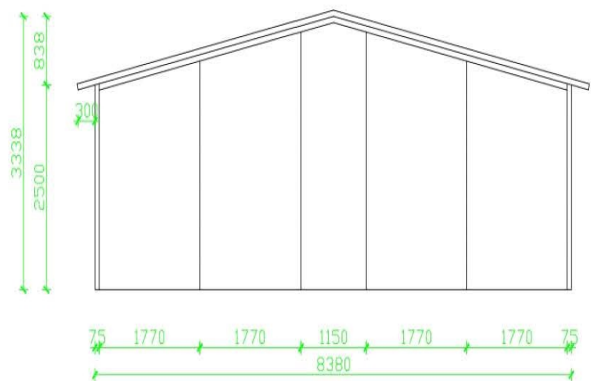
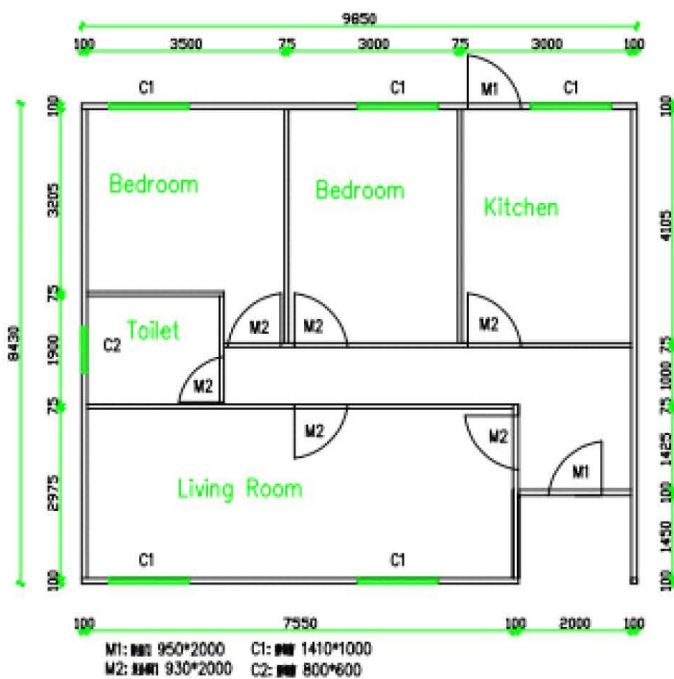
Model No.:XS-HH-0801 House Size: 9850mm*8430mm*2500mm (L*W*H)

House Inner Layout: 2 bedrooms,1 bathroom,1 kitchen and 1 living room

Outer Picture:



CAD Drawing:



Side Elevation

Material Details

No.	Part Name	Material	Specification
1	External Wall	EPS Sandwich Panel	100mm thickness,0.3mm color steel,8kg/m ³
2	Interior Wall	EPS Sandwich Panel	75mm thickness,0.3mm color steel,8kg/m ³
3	Roof	EPS Sandwich Panel	75mm thickness,0.3mm color steel,8kg/m ³
4	Door	Steel security Door	950mm*2000mm
5	Door	Composite board Door	930mm*2000mm
6	Window	PVC Steel Window	1410mm*1000mm
7	Window	PVC Steel Window	800mm*600mm
8	Packing	One 40FT HQ container can be loaded 160-200m ²	
9	Delivery Time	5-7 days	

The Advantages of This House

- 1.Safe and reliable structure
- 2.Can be used anywhere without disassembly and installation
- 3.Earthquake proof
- 4.Flexible layout
- 5.Long service life

21. South Africa 84m2 Prefab House Project

Model No.:XS-HH-0802 House Size: 12390mm*7230mm*2630mm (L*W*H)

House Inner Layout: 4 bedrooms, 2 bathroom and 2 living room

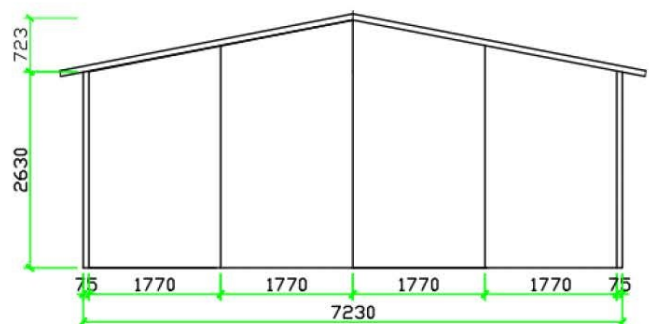
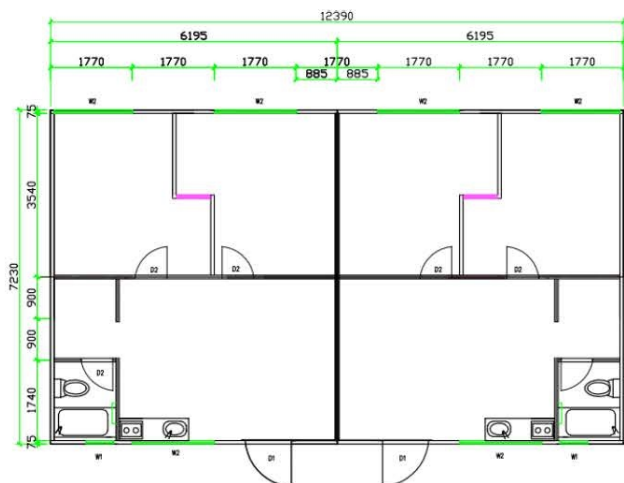
Outer Picture:



Inner Picture:



CAD Drawing:



Material Details

No.	Part Name	Material	Specification
1	External Wall	EPS Sandwich Panel	100mm thickness,0.3mm color steel,8kg/m ³
2	Interior Wall	EPS Sandwich Panel	75mm thickness,0.3mm color steel,8kg/m ³
3	Roof	EPS Sandwich Panel	75mm thickness,0.3mm color steel,8kg/m ³
4	Door	Steel security Door	950mm*2000mm
5	Door	Composite board Door	930mm*2000mm
6	Window	PVC Steel Window	1410mm*1000mm
7	Window	PVC Steel Window	800mm*600mm
8	Packing	One 40FT HQ container can be loaded 160-200m ²	
9	Delivery Time	5-7 days	

The Advantages of This House

- 1.Safe and reliable structure
- 2.Can be used anywhere without disassembly and installation
- 3.Earthquake proof
- 4.Flexible layout
- 5.Long service life

22.Chile 92.80 m² Prefab House Project

Item No.:XS-HH-0901 House Size: 14000mm*6180mm*3210mm (L*W*H)

House Inner Layout: 2 bedrooms,1 bathroom and 1 living room

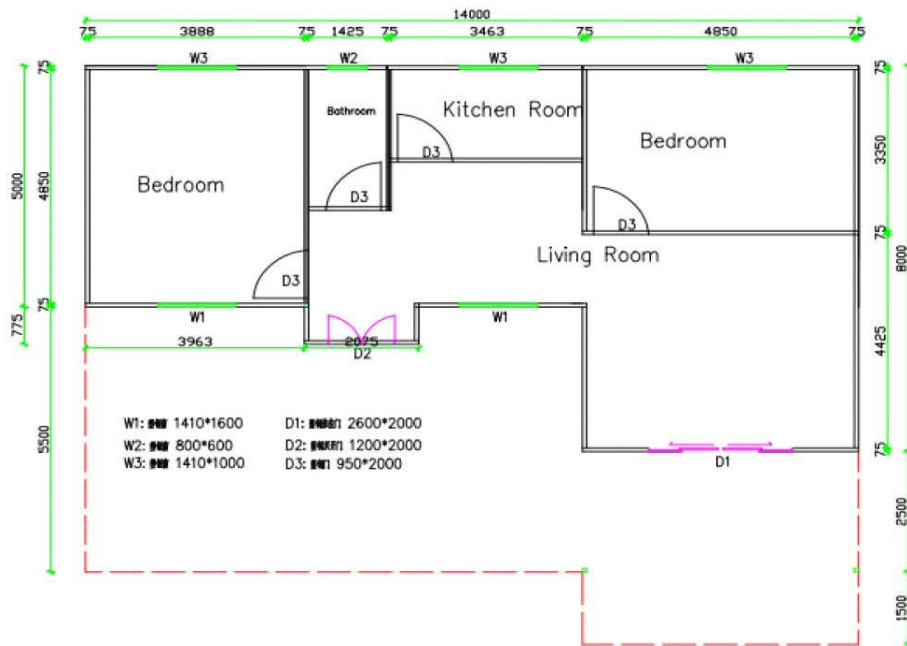
Outer Picture:



Inner Picture:



CAD Drawing:



Material Details

No.	Part Name	Material	Specification
1	External Wall	EPS Sandwich Panel	75mm thickness,0.3mm color steel,8kg/m ³
2	Interior Wall	EPS Sandwich Panel	75mm thickness,0.3mm color steel,8kg/m ³
3	Roof	EPS Sandwich Panel	75mm thickness,0.3mm color steel,8kg/m ³
4	Double Door	Aluminum Alloy	1200mm*2000mm
5	Sliding Door	PVC Steel Door	950mm*2000mm
6	Inner Door		
6	Window	PVC Steel Window	1870mm*1000mm
7	Window	PVC Steel Window	930mm*600mm
8	Packing	One 40FT HQ container can be loaded 160-200m ²	
9	Delivery Time	5-7 days	

The Advantages of This House

- 1.Safe and reliable structure
- 2.Can be used anywhere without disassembly and installation
- 3.Earthquake proof
- 4.Flexible layout
- 5.Long service life

23.India 95.58 m2 Prefab House Project



Material Details

No.	Part Name	Material	Specification
1	External Wall	EPS Sandwich Panel	75mm thickness,0.3mm color steel,8kg/m3
2	Interior Wall	EPS Sandwich Panel	75mm thickness,0.3mm color steel,8kg/m3
3	Roof	EPS Sandwich Panel	75mm thickness,0.3mm color steel,8kg/m3
4	Door	Steel security Door	950mm*2000mm
5	Door	Composite board Door	950mm*2000mm

The Advantages of This House

1.Safe and reliable structure

2.Can be used anywhere without disassembly and installation

3.Earthquake proof

4.Flexible layout

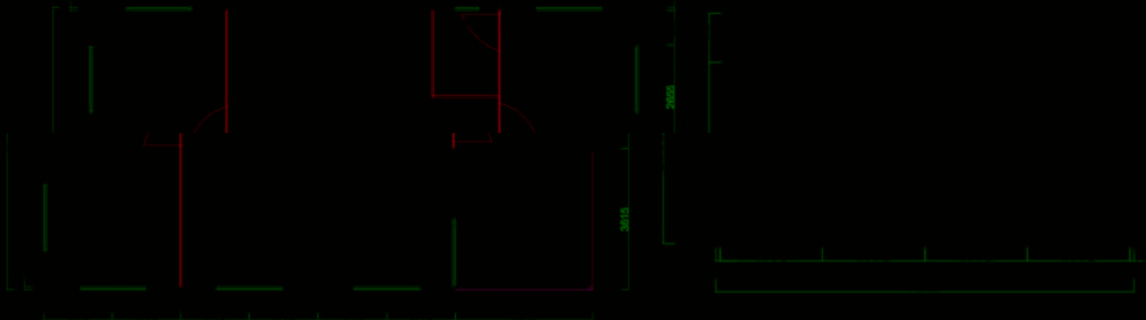
5.Long service life

24. India 100 m2 Prefab House Project

Item No.:XS-HH-1001 House Size:14160mm*7230mm*2600mm (L*W*H)

House Inner Layout: 2 bedrooms,1 bathroom and 1 living room

Outer Picture:



25. Malaysia 200m2 Prefab House Project

Item No.:XS-HH-2001 House Size:10620mm*9000mm*2600mm (L*W*H)

House Inner Layout: 4 bedrooms,4 bathroom 4 kitchen and 4 living room

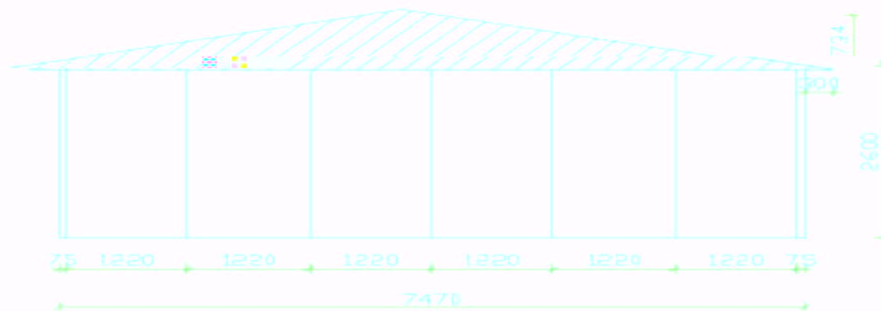
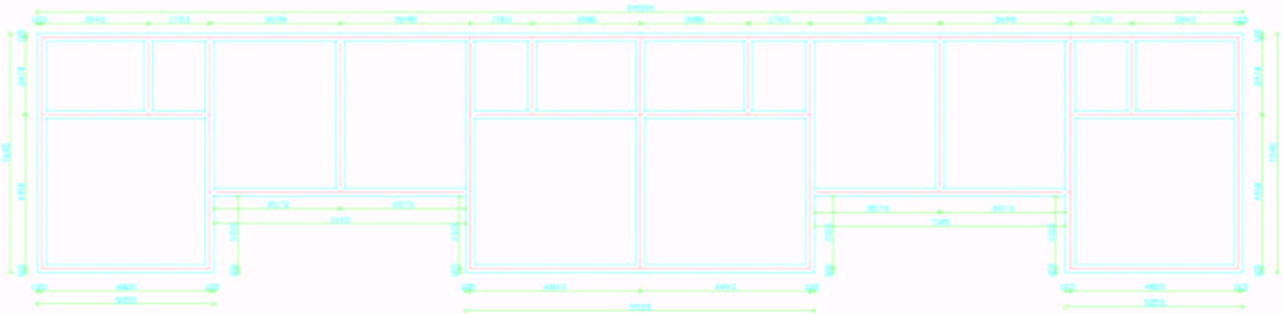
Outer Picture:



Inner Picture:



CAD Drawing:



Material Details

No.	Part Name	Material	Specification
1	External Wall	EPS Sandwich Panel	75mm thickness,0.3mm color steel,8kg/m3
2	Interior Wall	EPS Sandwich Panel	75mm thickness,0.3mm color steel,8kg/m3
3	Roof	EPS Sandwich Panel	75mm thickness,0.3mm color steel,8kg/m3
4	Door	Steel security Door	950mm*2000mm
5	Door	Composite board Door	950mm*2000mm
6	Window	PVC Steel Window	1410mm*1000mm
7	Window	PVC Steel Window	930mm*600mm
8	Packing	One 40FT HQ container can be loaded 160-200m ²	
9	Delivery Time	3-5 days	

The Advantages of This House

1.Safe and reliable structure

2.Can be used anywhere without disassembly and installation

PREFAB HOUSE



ASIAN DRAGON

International Corporation

What is Foam Cement House

House body parts:

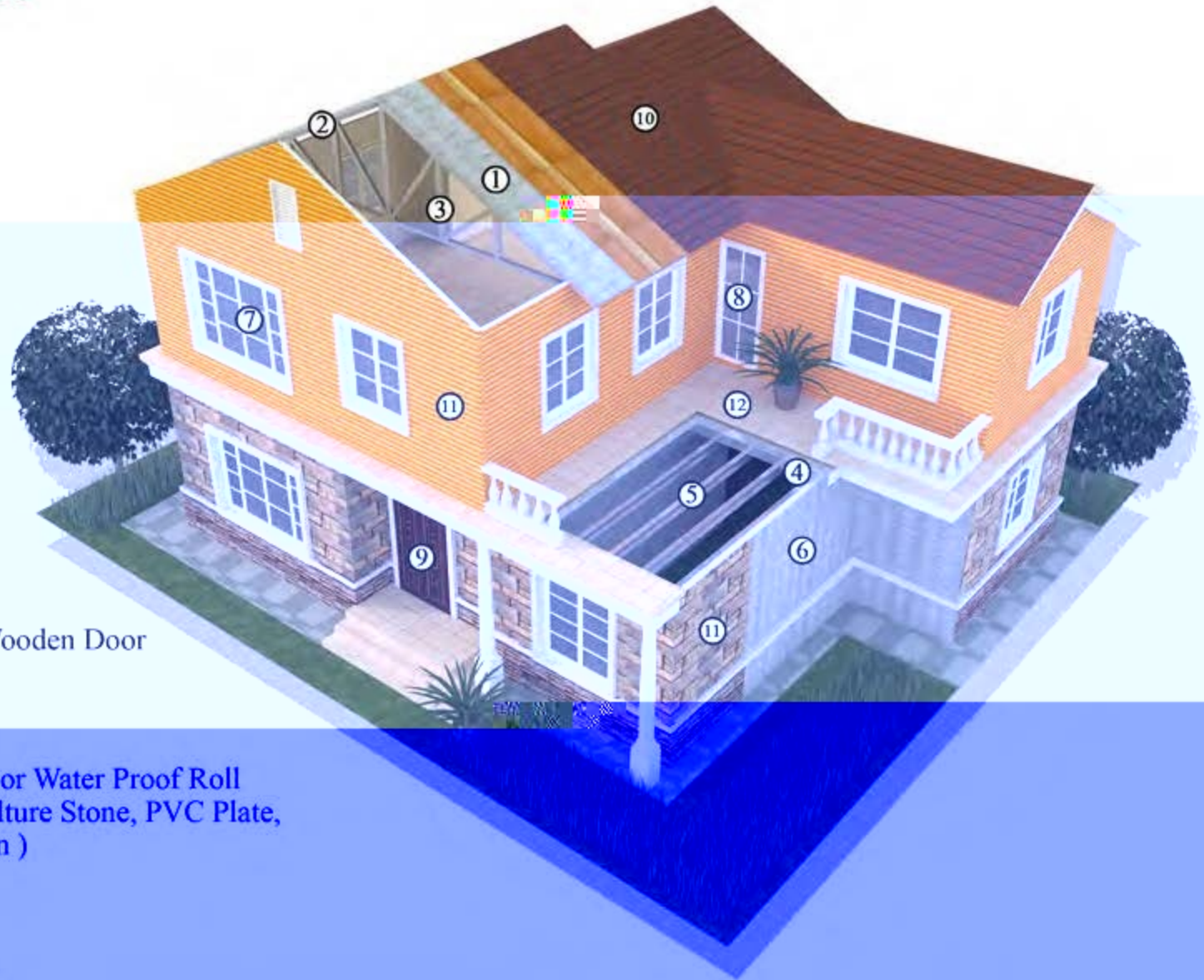
1. Roof Panel: foam cement board
2. Purline: hot galvanized steel
3. A-Beam: hot galvanized steel
4. Floor Support Panel: foam cement board
5. Truss Support Floor : H steel
6. Wall Panel: foam cement board

Windows and doors:

7. Window: PVC, Aluminum Alloy or Broken Bridge Aluminum Window with single, double, triplex glass
8. Door: PVC, Aluminum or Wooden Door
9. Main Entrance Door: Steel Security or Wooden Door

House decoration:

10. Water Proof Materials: Asphalt Shingle or Water Proof Roll
11. External Wall Decoration Materials: Culture Stone, PVC Plate, or Latex Painting (Colors can be chosen)
12. Ceramic tile



House Materials Introduction:

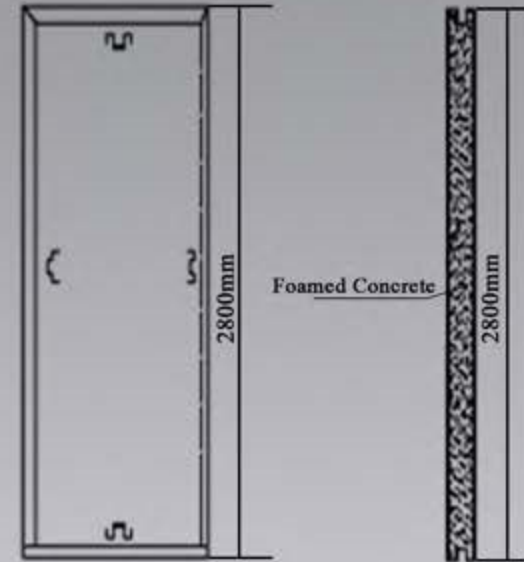
1-A. Foam cement board structure:

Two coats:
fiber cement board
with thickness of
standard 6mm and 8mm,
with options of 10mm and 12mm

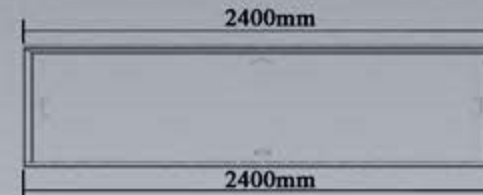
Middle core:
foamed concrete

Built-in steel structure:
hot galvanized steel with
thickness of 1.0mm, 1.2mm,
1.5mm or 1.7mm

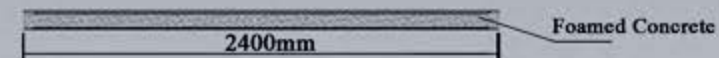
We can make special size & shape as per your requests if large quantity.



- SPEC for Wall Panel
1. 2800mm(H)*600mm(W)*70mm(T)
 2. 2800mm(H)*600mm(W)*90mm(T)
 3. 2800mm(H)*600mm(W)*115mm(T)
 4. 2800mm(H)*600mm(W)*140mm(T)



- SPEC for Roof Panel
1. 2400mm(H)*600mm(W)*70mm(T)
 2. 2400mm(H)*600mm(W)*90mm(T)
 3. 2400mm(H)*600mm(W)*115mm(T)
 4. 2400mm(H)*600mm(W)*140mm(T)



House Materials Introduction:

1-B. Foam cement board structure:

Holes on the male part



Male



Top Channel for putting in the ring beam (square tube)

Hooks on the female part



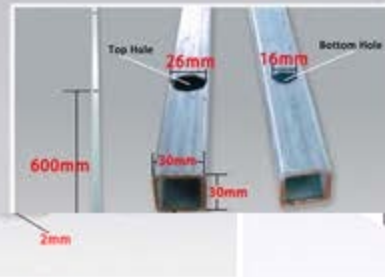
Female

2800mm

600mm

90mm

The female and male parts can connect with each other very tightly plus the hooks and holes sticking into each other.



Square tube for the steel basement



Bottom Channel for putting onto the steel basement

House Materials Introduction:

2. Manufacturing process

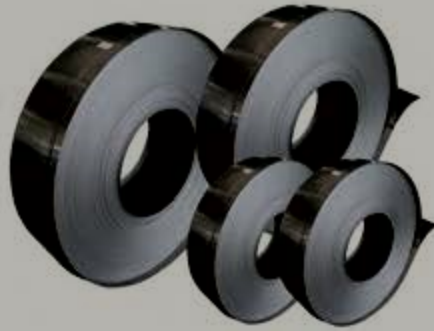


House Materials Introduction:

3. Quality control:

A. Raw materials inspect

Hot galvanized steel for steel frame



昌乐山水水泥有限公司出厂水泥检验报告

检验日期	检验地点	检验项目	检验结果	检验结论
2024年11月15日	昌乐山水	抗压强度	42.0	合格
		抗折强度	7.0	合格
		安定性	合格	合格
		凝结时间	合格	合格
		细度	合格	合格
		游离氧化钙	合格	合格
		三氧化硫	合格	合格
		氯离子	合格	合格
		碱含量	合格	合格
		烧失量	合格	合格
		标准稠度用水量	合格	合格
		泌水率	合格	合格
		初凝时间	合格	合格
		终凝时间	合格	合格

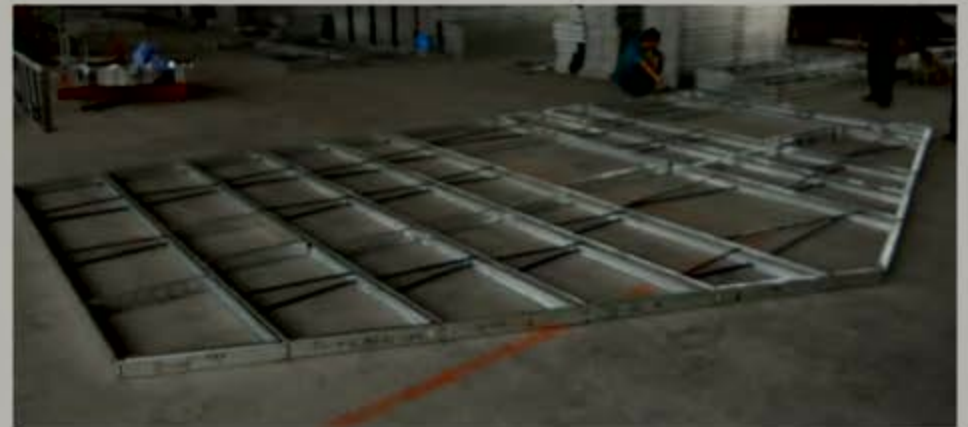
检验员: 王强
日期: 2024年11月15日

Test report for cement



Fiber cement board for two coats

B. Semi-finished product inspect



House Materials Introduction:

C. Finished product inspect



House Advantages:

1. Life Span: More than 50 years
2. Fire Proof: A1 Level
3. Thermal Conductivity: 0.1035 W/m.K
4. Thermal Resistance: 0.869 m²·K/W
5. Snow Resistance: Snow pressure 8.219 KN/m²
6. Earthquake Resistance: Up to Richter 8 or as required
7. Sound Insulation: 40 dB
8. Wind Load: Wind speed 180 km/h
9. Wall Shock Resistance: 500 KG concentrated force
10. Built-in Wire Conduit: Electric wire conduit inside of the panels

Packing & Loading:



Projects



Projects



Projects



Projects



Bedroom



Living Room



Our Partners & Clients

