

CFM56-3C-1
ESN 860199
MINI PACK

February 2020

Table of Content:

1. Engine Summary
2. LLP List
3. AD Status
4. NIS
5. QEC List
6. Accessory List
7. No PMA/No DER Statement
8. Power Rating Statement
9. BSI Report

1. Engine Summary

Engine Type: CFM56-3C-1

Engine Serial Number: 860199

Time Since New: 42,599

Cycles Since New: 23,115

TSPRSV: 27,063

CSLPRSV: 15,589

TSLSV: 27,063

CSLSV: 15,589

Engine Cycles Remaining - Cat C: 1,013

EGTHDM - Cat B: 0°C

Last Operator: UTair

2. LLP Status



CFM56-3C-1 TIME LIMITED PARTS RECORDS



ENG HOURS (TSN): 42689
ENG CYCLES (CSN): 23116
EFFECTIVE DATE: 17.05.2019

ENG HOUR: 15536
ENG CYCLE: 7527

ENGINE SERIAL NUMBER: 860199

CURRENT THRUST 22.1 kN

ENG EDS JIN	PART DESCRIPTION	PART NUMBER	SERIAL NUMBER	CSN	CYCLES USED ON		CYCLES USED ON		CYCLES USED ON		LIFE LIMIT		LIFE LIMIT		LIFE LIMIT		CYCLES AVAILABLE		CYCLES AVAILABLE		CYCLES AVAILABLE	
					CAT. A	CAT. B	CAT. C	CAT. 2C	CAT. 7B24	CAT. A	CAT. B	CAT. C	CAT. 2C	CAT. 7B24	CAT. A	CAT. B	CAT. C	CAT. 2C	CAT. 7B24	CAT. A	CAT. B	CAT. C
211	BOOSTER SPOOL	335-009-306-0	DB082272	23116	0	23116	0	0	0	0	30000	30000	30000	30000	2149	1784	1440	6884	6884	6884		
213	STAGE 1 FAN DISK	335-014-511-0	DB081988	23116	0	23116	0	0	0	0	30000	30000	30000	30000	6884	6884	6884	6884	6884	6884		
221	FAN SHAFT	335-006-414-0	DB143053	23116	0	23116	0	0	0	0	30000	30000	30000	30000	6884	6884	6884	6884	6884	6884		
312	HPCR SHAFT	1275M37P01	GWNC3876	18577	0	7527	0	0	0	0	20000	20000	20000	20000	1423	1423	1423	1423	1423	1423		
313	STAGE 1-2 SPOOL	1569M66G02	GWNC0309	13870	6343	7527	0	0	0	11050	20000	20000	20000	20000	6130	6130	6130	6130	6130	6130		
314	STAGE 3 HPC DISK	1590M59P01	GWND00EA	18987	0	7527	0	0	0	11460	20000	20000	20000	20000	1013	1013	1013	1013	1013	1013		1013
315	STAGE 4-9 SPOOL	1588M89G03	GWNGE5CL	11418	3891	7527	0	0	0	0	20000	20000	20000	20000	8562	8562	8562	8562	8562	8562		
316	HPC AIR SEAL	1319M25P02	GFF59MFA	15710	8183	7527	0	0	0	0	18000	18000	18000	18000	3453	3108	2590	6779	6779	6779		
521	FWD HPT SHAFT	1385M90P04	GWNCJ147	12563	0	7527	0	0	0	5036	20000	17000	20000	20000	5416	5322	6262	6262	6262	6262		
522	HPT AIR SEAL	1282M72P05	XAE34895	11418	3891	7527	0	0	0	0	20000	15800	15100	20000	6581	5199	4968	4968	4968	4968		
525	REAR HPT SHAFT	1864M91P02	TMT1H674	17923	10396	7527	0	0	0	0	20000	20000	20000	20000	4188	3874	2077	2077	2077	2077		
542	STAGE 1 LPT DISK	301-331-126-0	BB286566	23116	0	23116	0	0	0	0	25000	25000	25000	25000	1884	1884	1884	1884	1884	1884		
543	STAGE 2 LPT DISK	301-331-227-0	BB286603	23116	0	23116	0	0	0	0	25000	25000	25000	25000	1884	1884	1884	1884	1884	1884		
544	STAGE 3 LPT DISK	301-331-322-0	BB107727	23116	0	23116	0	0	0	0	25000	25000	25000	25000	1884	1884	1884	1884	1884	1884		
545	STAGE 4 LPT DISK	301-331-429-0	BA975631	23116	0	23116	0	0	0	0	25000	25000	25000	25000	1884	1884	1884	1884	1884	1884		
546	LPT CONC SUPPORT	305-056-116-0	DB142432	23116	0	23116	0	0	0	0	25000	25000	25000	25000	1884	1884	1884	1884	1884	1884		
551	LPT SHAFT	301-330-067-0	LA069432	23116	0	23116	0	0	0	0	30000	30000	30000	30000	6884	6884	6884	6884	6884	6884		
552	LPT STUB SHAFT	301-330-826-0	DA727751	23116	0	23116	0	0	0	0	25000	25000	25000	25000	1884	1884	1884	1884	1884	1884		

REF.: ENGINE SHOP MANUAL 05-11-00 TIME LIMITS REV. 57 FROM 15 JAN 2018

LOWEST LIMITS:
1) CAT. A, B, C: 1013 CYCLES AVAILABLE DUE TO LIFE EXPIRY OF STAGE 3 HPC DISK

DATE OF ISSUE: 17.05.2019

Prepared by: Dina Davletshina
Title: Specialist Powerplant group of Engineering Department
Sign:

Approved by: Roman Filipchenko
Title: Power Plant Dept Engineer
Sign:

3. AD Status



**AIRWORTHINESS DIRECTIVES
STATUS ENGINE**

Aircraft: CFM56-3C-1
 P/N: 860199
 S/N:
 Position:
 BI weekly: 15.May.2019
 Index: 42699:36
 DATE: 23116
 TSN:
 CSN:

AD	Eff. Date	Subject	Paragraph	Reference Document	Accomp. Document	Method	Type	Status	Interval	Last Accomp.	Next Accomp.	Remaining	Remarks
2000-05-22 / 0	02.06.2000	TO DETECT CRACKS IN THE SOLT HOLDERS OF HIGH PRESSURE TURBINE (HPT) FRONT ROTATING AIR SEALS.		SB72-0922/00				NOT APPLICABLE					Amendment: 39-11832 --- APPLICABILITY: CFM56-2, -2A, -2B, -3, -3B, and -3C Series Turbofan Engines EQUIPPED WITH HTP FRONT ROTATING AIR SEALS P/N 1282M7P03 S/N'S LISTED IN SB 78-92 2 DTD NOVEMBER 12, 1999
2000-15-01 / 0	02.10.2000	TO PREVENT FUEL LEAKAGE FROM BETWEEN THE FUEL PUMP FILTER COVER AND GEAR HOUSING						NOT APPLICABLE					Amendment: 39-11830 --- APPLICABILITY: CFM56-2, -2A, -2B, -3, -3B, -3C, -5, -5A, -5B, -5C Series Turbofan Engines.
2001-04-06 / 0	04.04.2001	TO PREVENT FAN DISK FAILURE		SB72-0854/05				NOT APPLICABLE					Amendment: 39-11830 --- APPLICABILITY: CFM56-2, -2A, -2B, -3, -3B, -3C, -5, -5A, -5B, -5C Series Turbofan Engines.
2001-11-05 / 0	11.06.2001	TO PREVENT BEARING FAILURE, NO.4 BEARING, P/N 305-355-717-0 THAT HAS A S/N LISTED IN TABLE 1 OF THIS AD INSTALLED.		SB72-A0965/00-S B72-A0966/00				NOT APPLICABLE					Amendment: 35-12245 --- APPLICABILITY: CFM56-2, -2A, -2B, -3, -3B, -3C, -5, -5A, -5B, -5C Series Turbofan Engines.
2002-13-03/-3B1/-3C-1 / 0	01.08.2002	TO PREVENT CRITICAL LIFE-LIMITED ROTATING ENGINE PART FAILURE.						OPEN					Amendment: 39-12790 --- APPLICABILITY: CFM5-3, -3B, -3C, -5 and -7 Series Turbofan Engines. This AD should be accomplished only during engine shop visit.
2004-10-13 / 0	24.06.2004	MAIN FUEL PUMP, CONVERSION FROM BRONZE BEARINGS TO ALUMINUM/BRONZE BEARINGS						NOT APPLICABLE					Amendment: 39-13543 --- APPLICABILITY: CFM5-3, -3B, -3C Series turbofan engines equipped with fuel pumps with solid bronze bearings.

2006-26-01 / 0	03.01.2007	REPLACE UNSAFE FUEL FILTERS; WESTERN FILTERS P/N S WF337661, WF337017 AND PTI TECHNOLOGIES P/N S 7595953-101, 7588133.								NOT APPLICABLE				Amendment: 39-14859 APPLICABILITY: CFM56-2 series, -3 series, -5 series and -7B turbofan engines equipped with fuel filters p/n WF337661, WF337017, 7595953-101 and 7588133 manufactured by WESTERN FILTERS and PTI TECHNOLOGIES.
2009-11-02 / 0	23.06.2009	REPLACE HPC 4-9 SPOOLS WITH P/N AND S/N SPECIFIED IN TABLE 1 OF THIS AD								NOT APPLICABLE				Amendment: 39-15912 APPLICABILITY: CFM56-2, CFM56-3, CFM56-5A, CFM56-3B, CFM56-5C AND CFM56-7B TURBOFAN ENGINES
2010-12-03 / 0	13.07.2010	PERIODIC INSPECTION OF FAN BLADES WITH 25 DEG. MILD SPAN SHROUD ON N CFM56-3B1 AND CFM56-3B2				SB/72-1067/01				NOT APPLICABLE				Amendment: 39-16324 APPLICABILITY: CFM56-3 and -3B TURBOFAN ENGINES
2013-02-02 / 0	28.01.2013	ENGINES MODIFIED BY STC SE00034EN WITH HPT DISK P/N 880026 SIN GLKBAA9307, GLKBA9335, GLKBA9404, GLKBAA9407 AND GLKBAA9409 INSTALLED								NOT APPLICABLE				Amendment: 39-17323 APPLICABILITY: CFM56-3, CFM56-3B AND CFM56-3C TURBOFAN ENGINES
2013-26-01 / 0	03.02.2014	INDEPENDENT INSPECTION OF AG8 H AND CRANKING PADD COVER				SB/72-1129/6/SE/72-0584/5; SB/72-0879/6				OPEN				Amendment: 39-17710 APPLICABILITY: CFM56-3B 1/-3C-1 and CFM56-7B SERIES TURBOFAN ENGINES
2015-18-04 / 01	20.10.2015	AGB1GB MAGNETIC CHIP DETECTOR INSPECTION				SB/72-0964/00				NOT APPLICABLE				Amendment: 39-18262 APPLICABILITY: CFM56-7B and CFM56-3 engines - PE R CFM1 FH JULY 2015 ALL AFFECTED GEAR SHAFTS WERE LOCATED AND REMOVED.

2016-14-10 / 00	09.08.2016	ENGINES MODIFIED BY STC SE00034EN WITH HPT DISK								NOT APPLICABLE										This AD applies to CFM International, S.A. CFM56-3, CFM56-3B, and CFM56-3C turbofan engines, modified by Supplemental Type Certificate SE00034EN, with a high-pressure turbine (HPT) disk, part number (P/N) 880026, serial number (S/N) GKLBAA9307, GKLBAA9335, GKLBAA9404, GKLBAA9407 or GKLBAA9409, installed. This AD supersedes AD 2013-02-02
2017-0149 / 1	30.08.2017	MAINTAIN THE ACTUATORS ABILITY TO FULLY REACH COMMAND POSITION, AND PREVENT LOTC AND REDUCE CONTROL OF THE AIRPLANE	SB/72-1169/01			1 YRD	25.Sep.2018, 42487-21H, 22998C(WO: 11201266)	25.Sep.2019	133D	REPETITIVE										
2017-14-08 / 0	18.08.2017	MAINTAIN THE ACTUATORS ABILITY TO FULLY REACH COMMAND POSITION, AND PREVENT LOTC AND REDUCE CONTROL OF THE AIRPLANE	SB/72-1169/01			1 YRD	25.Sep.2018, 42487-21H, 22998C(WO: 11201266)	25.Sep.2019	133D	REPETITIVE										
86-08-05 / 01	07.07.1986	RADIAL DRIVE SHAFT INSPECT AND REPLACE SPIROLOCK RING	SB/72-205/05							NOT APPLICABLE										Amendment: 39-5339 – --- APPLICABILITY: CFM56-3/-3B1 SERIES ENGINES
89-23-06 / 01	28.01.1998	NUMBER 3 BEARING FAILURE PREVENTION	SB/72-530/03							NOT APPLICABLE										Amendment: 39-10290 --- APPLICABILITY: CFM56-2/-3/-3B/-3C/-5 --- This Document SUPERSEDES AD 8-17-04 Rev.0
90-20-13 / 0	14.10.1990	INCORPORATION OF FAN BLADE DAMPERS	SB/72-0494/04							NOT APPLICABLE										AMENDMENT : 39-6679 --- APPLICABILITY: CFM56-3B-2/-3C-1E EQUIPPED WITH FAN BLADE P/N's 9527N99P08, 9527N99P11, 9527N99P12, 1285M39P01
91-02-10 / 00	11.02.1991	FAN SPLITTER FAIRING, FAN STAGE 1 VANE ASSEMBLY	SB/72-0450/04; SB/72-0462/03							PERFORMED BY PREV. OPERATOR										Amendment: 39-6839 --- APPLICABILITY: CFM56-3/-3B/-3C
96-18-16 / 00	09.09.1996	REIDENTIFICATION OF CFM56-3/-3B/-3C LPTR STUB SHAFTS AND CONICAL SUPPORTS	SB/72-0695/01							NOT APPLICABLE										Amendment: 39-9742 – --- APPLICABILITY: CFM56-2/-2B/-3/-3B/-3C/-5

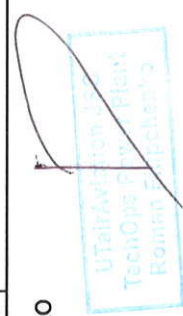
96-25-11 / 00	29.01.1997	FAN BLADES AND DISK								NOT APPLICABLE		Amendment: 39-6425 -- -- APPLICABILITY: AC B737-400 AND CFM56-3B-2/-3C-1 ENGINES -- -- SUPERSIBES AD 89-13-51/REV. 0
97-08-01 / 00	23.06.1997	TO PREVENT A LOW CYCLE FATIGUE (LCF) FAILURE OF THE FAN DISK, WHICH COULD RESULT IN AN UNCONTAINED ENGINE FAILURE								NOT APPLICABLE		Amendment 39-9889 -- -- APPLICABILITY: CFM56-3/-3B/-3C WITH FAN DISK P/N 335-014-509-0 OR P/N 335-014-511-0 INSTALLED AND CURRENTLY OR PREVIOUSLY OPERATED IN CATEGORY C RATING. -- Controlled by ESM Task 05-11
98-07-02 / 00	30.03.1998	RUBS BETWEEN THE OUTER CONE OF THE NO.3 BEARING AND HPC ROTOR				SB/72-0855/02, SB/72-0856/0				NOT APPLICABLE		Amendment: 39-10420 -- -- APPLICABILITY: CFM56-2, CFM56-3/-3B/-3C AS LISTED IN AD.
98-10-11 / 0	03.06.1998	INFLIGHT ENGINE SHUTDOWN PREVENTION				SB/72-A0861/03, SB/72-0863/01, SB/72-0865/0, SB/72-0867/0, SB/72-0873/01				NOT APPLICABLE		Amendment: 39-10523 -- -- APPLICABILITY: CFM56-3/-3B/-3C LISTED IN RELATED CFM56-3 DOCUMENT SUPERSEDES THE AD 97-25-51
98-12-32 / 0	20.07.1998	ONE TIME ECI FOR CRACKS OR GOUGES IN CERTAIN HPT ROTOR DISKS				SB/72-0843/01				NOT APPLICABLE		Amendment: 39-10585 -- -- APPLICABILITY: CFM56-2/-2A/-2B/-3B/-3C LISTED IN RELATED CFM56-3 SB
98-19-10 / 0	28.09.1998	TO PREVENT IN-FLIGHT ENGINE SHUTDOWN FROM AGB STARTER GEAR SHAFT DISINTEGRATION				SB/72-0877/3				NOT APPLICABLE		Amendment: 39-10752 -- -- APPLICABILITY: CFM56-3/-3B/-3C LISTED IN SB 72-0877

TYPE	METHOD
------	--------

Prepared by : Dina Davletshina



Revised by : Roman Filipchenko



Quality : Power Plant Department Engineer

16.05.2019

4. NIS



UTair Aviation

TO WHOM IT MAY CONCERN

ENGINE P/N : CFM56-3C-1/ S/N: 860199

Non-Accident / Incident Statement

The above mentioned ENGINE was operated by Utair Aviation since 03.11.2010 to 18.10.2019.

The engine was not involved in any accident / serious incident as per the ICAO Annex 13 Chapter, has not been immersed in salt water or otherwise exposed to corrosive agents outside normal operation; and was not obtained from nor operated by any government or state aircraft while in UTair Aviation service.

Engine accumulated Total Hours 27166 and Total Cycles 15590 as on 03.11.2019.

Engine accumulated Total Hours 42699:36 and Total Cycles 23116 as on 18.10.2019.

Date: 18.10.2019

Name: Roman Filipchenko

Title: Power Plant Department Engineer

Signature:

A handwritten signature in black ink, appearing to be 'Roman Filipchenko', written over a white background.

5. QEC List



UTair Aviation


TO WHOM IT MAY CONCERN

ENGINE P/N: CFM56-3C-1/ S/N: 860199

ENGINE QEC LIST

UNIT RECEIVED ON ENGINE			
ACCESSORY	QTY	PART NUMBER	SERIAL NUMBER
HYDRAULIC PUMP	1	66087	277944B
CSD	1	735511A	B3434
AIR STARTER	1	3505716-6	503C
START VALVE	1	3289630-2	5739
PRECOOLER CONTROL VALVE	1	3289562-6	13696
PRSOV	1	3214552-5	8142
TAI PRESSURE SWITCH	1	21SN41-52	M159
BLEED AIR CHECK VALVE	1	3202222-1	6779
HIGH STAGE VALVE	1	3214446-4	10912
BLEED AIR REGULATOR	1	107492-6	10464
TAI VALVE	1	3290662-1	960
HIGH STAGE REGULATOR	1	107484-6	4199
AC GENERATOR	1	976J498-2	ZJ12559
PRIMARY SLEEVE ASSY	1	314A1502-58	2537
TURBINE EXHAUST PLUG	1	314A1501-18	2537
FIRE DETECTOR	-	PART MISSING	PART MISSING
FIRE DETECTOR	-	PART MISSING	PART MISSING
FIRE DETECTOR	-	PART MISSING	PART MISSING
FUAL CONTROL BOX	-	PART MISSING	PART MISSING

Date: 17.May.2019

Prepared by: Dina Davletshina
Title: Specialist Power Plant Group
Engineering Department
Sign: 

Approved by: Roman Filipchenko
Title: Power Plant Department Engineer
Sign: 



6. Accessory List

BARE ENGINE COMPONENTS - Module 15: LPT Frame		P/N	S/N
Vibration Sensor Turbine Frame Bearing No5	77-31-02-01 pos -10	PRESENT	PRESENT
BARE ENGINE COMPONENTS - Module 17: AGB		P/N	S/N
Control Alternator	73-11-01-01 pos 270	44376-1	130357
AC Generator Rotor	73-11-01-01 pos 285	MISSING	MISSING
Fuel Heater Servo	79-21-02-01 pos 45	45731-1251-1	FHS10348
Main Fuel Pump	73-11-01-01 pos 500	708600-5	11302
MEC	73-11-01-01 pos 100	655038063-215	WYG86589
Lubrication Unit	79-21-01-02 pos 10	335-261-004-03	8599
Oil Scavenge Filter	79-21-01-02 pos 128	QA06961	BH74243
Fuel / Oil Exchanger	79-21-02-01 pos 10	69202-300-3	10346
QEC COMPONENTS		P/N	S/N
W1502 Wire Bundle Assembly 61-31502 (W1502)	PPBU 71-00-02 fig.18-3, 5, fig.18-4, 5, 10	61-3150242	NOT READABLE
W1508 Wire Bundle Assembly 61-31508 (W1508)	PPBU 71-00-02 fig.18-1,5, fig.18-5, 5	MISSING	MISSING
W0200 Wire Bundle Assembly 61-30200 (W0200)	PPBU 71-00-02 fig.18-2, 45	61-30200	PRESENT
AC Generator	24-11-11-01 pos 105	MISSING	MISSING
Fire Detector - Upper R/H Fan Case	26-11-11-01 pos 415	MISSING	MISSING
Fire Detector - Lower Fan Case	26-11-11-01 pos 625	MISSING	MISSING
Fire Detector - Turbine Case	26-11-11-01 pos 230	MISSING	MISSING
Hydraulic Pump	29-15-11-01 pos 70	AP15V-28	277944B
Constant Speed Drive (CSD)	24-11-11-01 pos 15	MISSING	MISSING
CSD Oil Cooler	24-11-21-01 pos 10	538551-2	3656R
CSD Cooling Oil Temp. Switch	24-11-00-02 pos 175	PRESENT	PRESENT
CSD QAD	24-11-11-01 pos 60	10-60295-15	18083
Air Starter Valve	80-11-05-01 pos 40	99193-974905-3	8211
Air pneumatic Starter	80-11-05-01 pos 45	3505716-6	503C
Bleed Air Check Valve	36-19-15-01 pos 50	3202222-1	6779
High Stage Valve	36-19-15-02 pos 60	3214446-4	10912
TAI Pressure Switch	30-21-11-01 pos 40	PRESENT	PRESENT
Bleed Air Regulator	36-11-16-01 pos 10	107492-6	10464
High Stage Regulator	36-11-86-01 pos 10	107484-6	4199
TAI Valve	30-21-11-01 pos 105	3290662-1	960
Fan Air / Precooler Control Valve	36-12-25-01 pos -5	PRESENT	PRESENT
Pressure Regulating and Shut-Off Valve	36-12-35-02 pos 20	MISSING	MISSING
Fuel Flow Transmitter	73-31-01-01 pos -5	08748/9-217-38	3326
Low Oil Pressure Switch	79-30-00-76 pos 195	21SN04-211A	X02227B
Low Oil Pressure Switch/Oil Pressure Transmitter Tubing/Hose	79-30-00-76 pos 220	PRESENT	PRESENT
Fuel Filter Differential Pressure Switch	73-34-01-01 pos 40	21SN04-209-A	X0894B
Fuel Filter Differential Pressure Switch Flexible Hoses	73-34-01-01 pos 5, 10	PRESENT	PRESENT
Fuel Flow Transmitter	73-31-01-01 pos 85	08748/9-217-38	3326
Oil Pressure Transmitter	79-30-00-76 pos 220	418-20044	9913255
Oil Filter Differential Pressure Switch	79-30-00-76 pos 480	21SN04-226A	S03552B
Oil Filter Differential Pressure Switch Tubing	79-30-00-76 pos 350, 360	PRESENT	PRESENT
Oil Quantity Transmitter	79-30-00-76 pos 610	20041-0000-03	442F
Oil Temperature Transmitter	79-30-00-76 pos 460	PRESENT	PRESENT
Exhaust Plug	78-11-01-01 pos 97	314A1501-18	2537
Exhaust Sleeve	78-11-01-01 pos 10	314A1502-58	2537
Fan Case Fitting Assy LH	71-21-01-01 pos 10	PRESENT	PRESENT
Fan Case Fitting Assy RH	71-21-01-01 pos 15	PRESENT	PRESENT
Thrust Fitting Assy LH	71-21-02-01 pos 170	PRESENT	PRESENT
Thrust Fitting Assy RH	71-21-02-01 pos 175	PRESENT	PRESENT
Hanger Fitting Assy	71-21-03-01 pos 120	PRESENT	PRESENT
Current Transformer	24-21-71-02 pos 10	941D339-1	V10889-045

Data: 23/12/2019

Prepared by:

Name: Sergey Aleksandrov

Title: Specialist of Power Plant group

Engineering Department

Signature:



7. No PMA/No DER Statement



UTair Aviation

TO WHOM IT MAY CONCERN

ENGINE P/N : CFM56-3C-1/ S/N: 860199

Non PMA/DER Statement

To the best of our knowledge, we confirm that neither PMA parts, nor DER/DOA repaired parts have been installed on exposed areas of the Engine during Utair's operation from 03.11.2010 to 18.10.2019.

Date: 18.10.2019

Name: Roman Filipchenko

Title: Power Plant Department Engineer

Signature:

A handwritten signature in blue ink is written over a blue rectangular stamp. The stamp contains the text 'UTair Aviation', 'Power Plant Department', and 'Surgut, Russia'.

8. Power Rating Statement



UTair Aviation

TO WHOM IT MAY CONCERN

ENGINE P/N: CFM56-3C-1/ S/N: 860199

Power Rating Statement

The above mentioned ENGINE was operated by Utair Aviation since 03.11.2010 to 18.10.2019.

The Engine was utilization only in B rating (22,1 KLB).

Date: 18.10.2019

Name: Roman Filipchenko

Title: Power Plant Department Engineer

Signature: 

9. BSI Report


Borescope Inspection Report / Отчет осмотра методом бороскопии

Form 29. Rev.2 Date 01.02.17

DSI-199-18

Report No / Номер отчета: 139-18	Date of Inspection / Дата осмотра 12 July 2018
Operator / Заказчик UTair	WO / Номер заказа 10813489
Location / Место: VKO	A/C registration / Регистрационный номер ВС VQ-BHZ B737-400
Engine model / Тип двигателя CFM56-3C-1	Engine S/N Серийный номер двигателя 860199 ENGINE # 2
ENGINE OPERATING HOURS 41'788 / 7'448 Наработка двигателя в часах	ENGINE OPERATING CYCLES 22'638 / 3'840 Наработка двигателя в циклах
Borescope Inspector Инспектор Mikhail Krasnov бороскопии	Used Equipment Используемое оборудование "GE MENTOR VISUAL IQ PROBE" P/N MVIQAP6130 s/n 1729A2540

Reporting Standard / Норма включения в отчет: All visible defects not attributable to shadows, geometry or fiberscope handling are reported / Указываются все видимые, незатененные дефекты, геометрия или информация со световода.
Inspection Details / Дополнительные данные осмотра: Equipment checked and initially checked-up in accordance with Equipment Instruction Manual. Оборудование проверено, включая первично в соответствии с Руководством по эксплуатации оборудования.
Calibration and sensitivity / Калибровка и чувствительность: in accordance with Instruction Manual / в соответствии с Руководством по эксплуатации.
NOTE / Примечание: Defect measurement is for one, the most significant finding per engine module regarding engine overall acceptance / Измерение дефекта произведено для одного, наиболее важного обнаружения на части двигателя, касательно общей пригодности двигателя.

FINDINGS / Обнаружения
ENGINE MODULE DESCRIPTION 1 / Название 1 части двигателя:
HPT NGV. TASK 72-001-00-01.
Module condition / Состояние части:

**HPT NGV L/E - Vanes has material with burns.
Permitted.
See pictures 1;2;3.**

**HPT NGV T/E - Vanes has missing material and
minor axial cracks.
Permitted.
See pictures 4;5;6.**

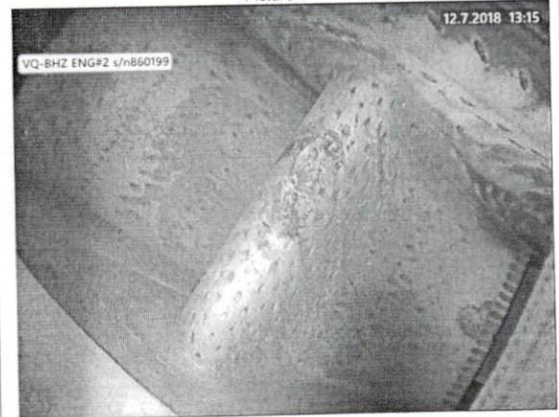
**Inspected IAW AMM TASK 72-00-00-216-157-C00
Rev.86 From: September 25/2017**

Borescope
Inspector stamp
Module Conclusion / Заключение по части:
Serviceable / Исправна

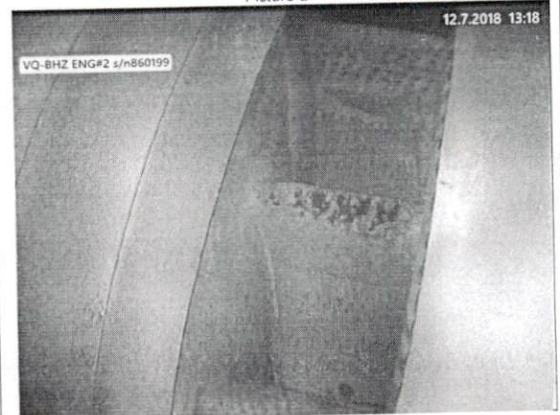
**Result In acc. AMM 72-00-00/601,
Rev.86 From: September 25/2017**

Certifying staff
stamp

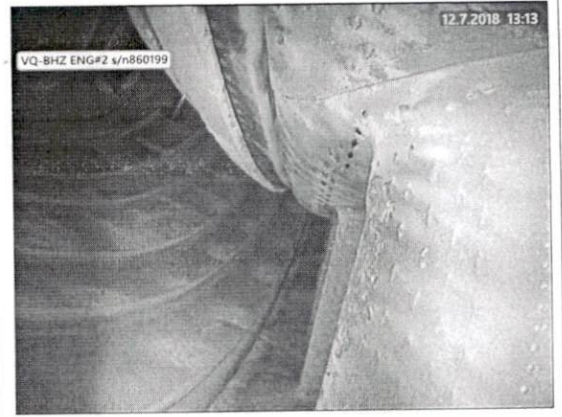
Picture 1



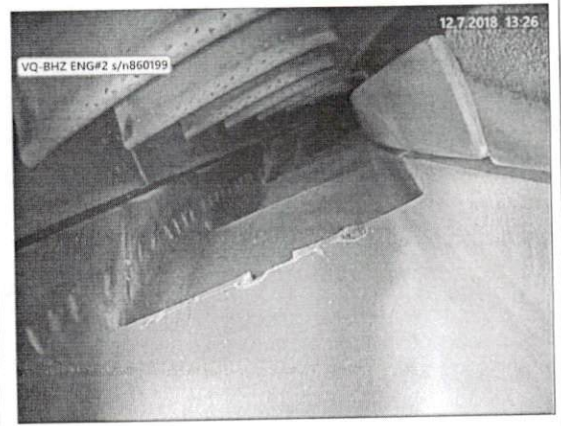
Picture 2



Picture 3



Picture 4





Picture 5







Picture 6



UTG
174
M&E

ENGINE MODULE DESCRIPTION 2 / Название 2 части двигателя: HPT Blades and Shrouds. TASK 72-001-00-01.		N/A
Module condition / Состояние части: Damages not found / Без замечаний Inspected IAW AMM TASK 72-00-00-290-801-C00; AMM TASK 72-00-00-216-026-C00. Rev.86 From: September 25/2017	 Borescope Inspector stamp	
Module Conclusion / Заключение по части: Serviceable / Исправна Result In acc. AMM 72-00-00/601, Rev.86 From: September 25/2017	 Certifying staff stamp	

You can add the required number of the blocks and increase them to describe all necessary parts
Вы можете добавлять необходимое количество блоков и их увеличивать для описания всех необходимых частей

ENGINE STATUS Состояние двигателя	<input checked="" type="checkbox"/> Serviceable Исправен	<input type="checkbox"/> Serviceable with limits Исправен с ограничениями	<input type="checkbox"/> Not Serviceable Не исправен
ENGINE LIMITATION Ограничения по двигателю			
ATTACHED DOCUMENTS Приложенные документы	<input type="checkbox"/> Video/DVD	<input checked="" type="checkbox"/> photos	<input type="checkbox"/> others
CONSUMED MAN-HOURS Затраченная трудоемкость	3 M/H		
Borescope Inspector stamp and Signature Штамп и подпись Инспектора бороскопии	 Stamp	 Signature	
Certifying Staff stamp and Signature Штамп и подпись Сертифицирующего персонала	 Stamp	 Signature	

Trainee Brylev Dmitry



Borescope Inspection Report / Отчет осмотра методом бороскопии

Form 29. Rev.2 Date 01.02.17

Report No / Номер отчета:	112-18	Date of Inspection / Дата осмотра	13 May 2018
Operator / Заказчик	UTair	WO / Номер заказа	10496322
Location / Место:	VKO	A/C registration / Регистрационный номер ВС	VQ-BHZ B737-400
Engine model / Тип двигателя	CFM56-3C-1	Engine S/N / Серийный номер двигателя	860199 ENGINE #2
ENGINE OPERATING HOURS / Нароботка двигателя в часах	41'307 / 6'967	ENGINE OPERATING CYCLES / Нароботка двигателя в циклах	22'386 / 3'588
Borescope Inspector / Инспектор бороскопии	Eduard Shigabiev	Used Equipment / Используемое оборудование	"GE MENTOR VISUAL IQ PROBE" P/N MVIQAP6130, s/n 1729A2540

Reporting Standard / Норма включения в отчет: All visible defects not attributable to shadows, geometry or fiberscope handling are reported / Указываются все видимые, незатененные дефекты, геометрия или информация со световода.

Inspection Details / Дополнительные данные осмотра: Equipment checked and initially checked-up in accordance with Equipment Instruction Manual. Оборудование проверено, включая первично в соответствии с Руководством по эксплуатации оборудования.

Calibration and sensitivity / Калибровка и чувствительность: in accordance with Instruction Manual / в соответствии с Руководством по эксплуатации.

NOTE / Примечание: Defect measurement is for one, the most significant finding per engine module regarding engine overall acceptance / Измерение дефекта произведено для одного, наиболее важного обнаружения на части двигателя, касательно общей пригодности двигателя.

FINDINGS / Обнаружения

ENGINE MODULE DESCRIPTION 1 / Название 1 части двигателя:

COMBUSTION CHAMBER TASK 72-00-00-216-160-C00

Module condition / Состояние части:

- Inner and Outer liners has axial cracks.**
Permitted.
see picture 1;2.
- Some Deflectors has minor edge burning.**
Permitted.
see picture 3.

Inspected IAW AMM 72-00-00/601,
Rev.86 From: September 25/2017



Borescope
Inspector stamp

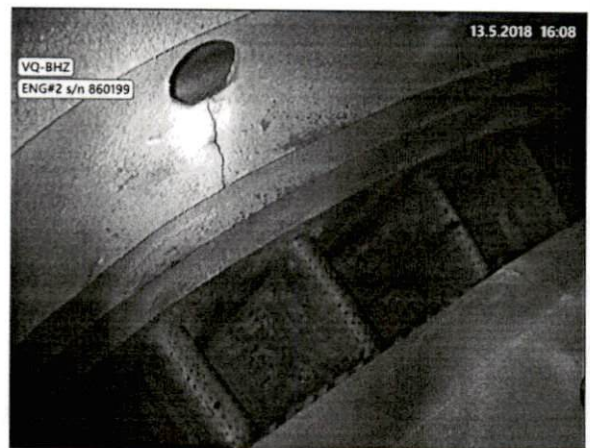
Module Conclusion / Заключение по части:

Seviseable / Исправна
Result In acc. AMM 72-00-00/601,
Rev.86 From: September 25/2017



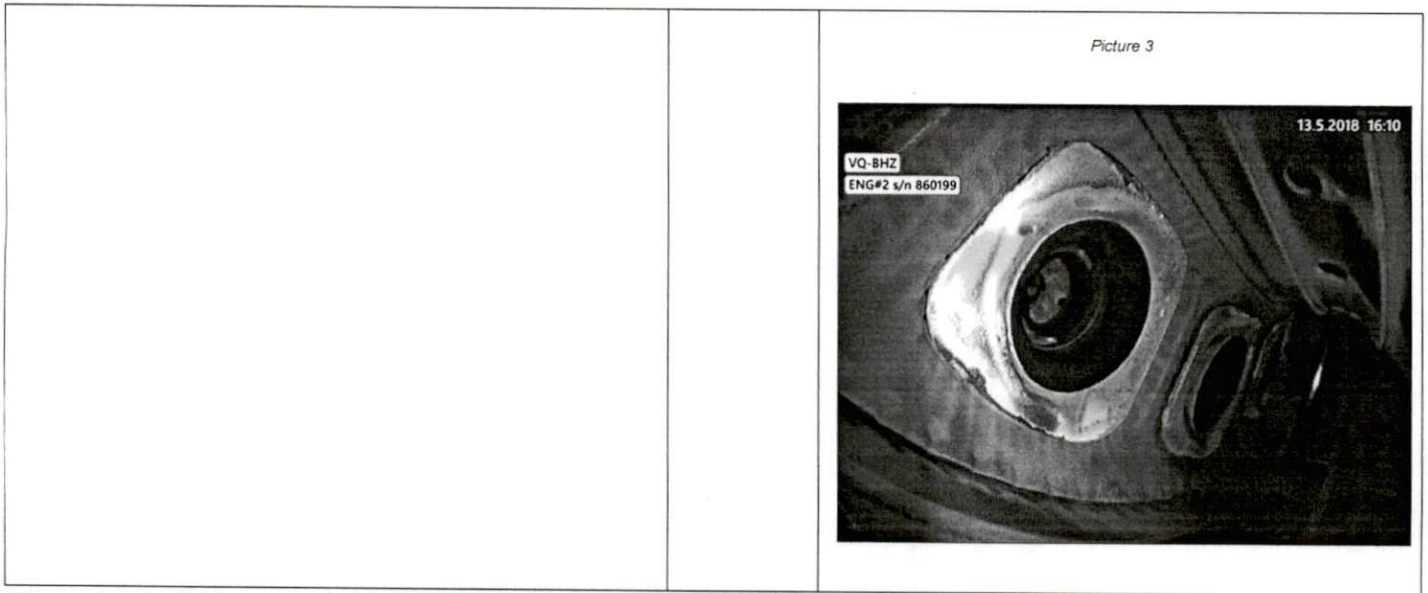
Certifying staff
stamp

Picture 1


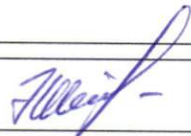




Picture 2





You can add the required number of the blocks and increase them to describe all necessary parts
 Вы можете добавлять необходимое количество блоков и их увеличивать для описания всех необходимых частей

ENGINE STATUS <i>Состояние двигателя</i>	<input checked="" type="checkbox"/> Serviceable Исправен	<input type="checkbox"/> Serviceable with limits Исправен с ограничениями	<input type="checkbox"/> Not Serviceable Не исправен
ENGINE LIMITATION <i>Ограничения по двигателю</i>			
ATTACHED DOCUMENTS <i>Приложенные документы</i>			
<input type="checkbox"/> Video/DVD		<input checked="" type="checkbox"/> photos	
<input type="checkbox"/> others			
CONSUMED MAN-HOURS <i>Затраченная трудоемкость</i>			
3 M/H			
Borescope Inspector stamp and Signature <i>Штамп и подпись Инспектора бороскопии</i>			
Certifying Staff stamp and Signature <i>Штамп и подпись Сертифицирующего персонала</i>			

Trainee Brylev Dmitry 