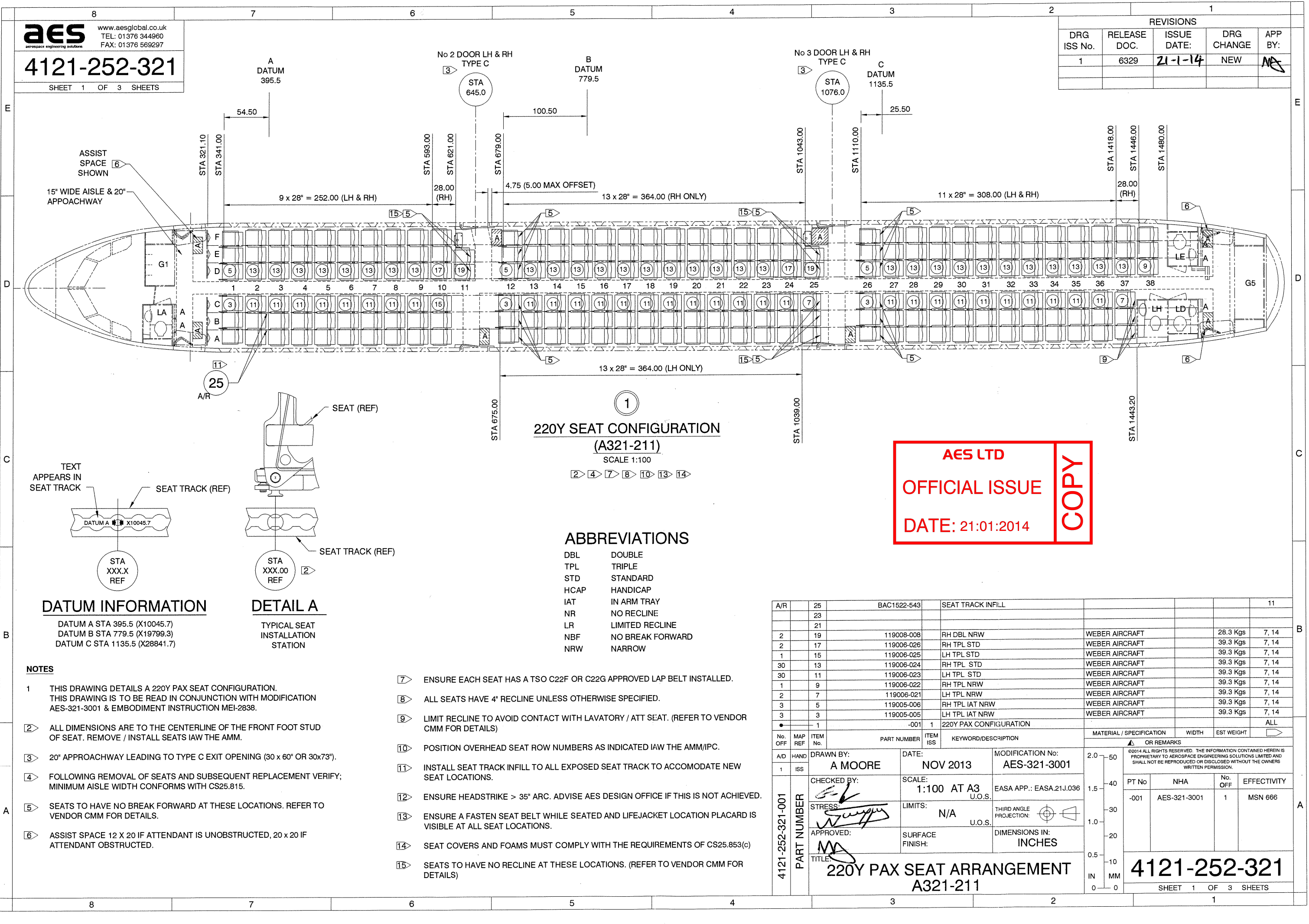


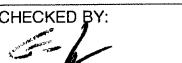
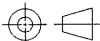
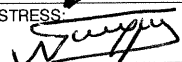
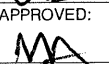
REVISIONS				
DRG ISS No.	RELEASE DOC.	ISSUE DATE:	DRG CHANGE	APP BY:
1	6329	21-1-14	NEW	MA



AES LTD
OFFICIAL ISSUE
DATE: 21:01:2014
COPY

ABBREVIATIONS

DBL	DOUBLE
TPL	TRIPLE
STD	STANDARD
HCAP	HANDICAP
IAT	IN ARM TRAY
NR	NO RECLINE
LR	LIMITED RECLINE
NBF	NO BREAK FORWARD
NRW	NARROW

A/R	25	BAC1522-543	SEAT TRACK INFILL					11	
	23								
	21								
2	19	119008-008	RH DBL NRW		WEBER AIRCRAFT		28.3 Kgs	7, 14	
2	17	119006-026	RH TPL STD		WEBER AIRCRAFT		39.3 Kgs	7, 14	
1	15	119006-025	LH TPL STD		WEBER AIRCRAFT		39.3 Kgs	7, 14	
30	13	119006-024	RH TPL STD		WEBER AIRCRAFT		39.3 Kgs	7, 14	
30	11	119006-023	LH TPL STD		WEBER AIRCRAFT		39.3 Kgs	7, 14	
1	9	119006-022	RH TPL NRW		WEBER AIRCRAFT		39.3 Kgs	7, 14	
2	7	119006-021	LH TPL NRW		WEBER AIRCRAFT		39.3 Kgs	7, 14	
3	5	119005-006	RH TPL IAT NRW		WEBER AIRCRAFT		39.3 Kgs	7, 14	
3	3	119005-005	LH TPL IAT NRW		WEBER AIRCRAFT		39.3 Kgs	7, 14	
●	1	-001	1	220Y PAX CONFIGURATION				ALL	
No. OFF	MAP REF	ITEM No.	PART NUMBER	ITEM ISS	KEYWORD/DESCRIPTION	MATERIAL / SPECIFICATION	WIDTH	EST WEIGHT	▶
⚠ OR REMARKS									
A/D	HAND	DRAWN BY:		DATE:	MODIFICATION No:		2.0 — 50		
1	ISS	A MOORE		NOV 2013	AES-321-3001		©2014 ALL RIGHTS RESERVED. THE INFORMATION CONTAINED HEREIN IS PROPRIETARY TO AEROSPACE ENGINEERING SOLUTIONS LIMITED AND SHALL NOT BE REPRODUCED OR DISCLOSED WITHOUT THE OWNERS WRITTEN PERMISSION.		
		CHECKED BY:	SCALE:	EASA APP.: EASA.21J.036		PT No			
			1:100 AT A3 U.O.S.			NHA			
		STRESS:	LIMITS:	THIRD ANGLE PROJECTION: 		No. OFF			
			N/A	U.O.S.		EFFECTIVITY			
		APPROVED:	SURFACE FINISH:	DIMENSIONS IN:		-001			
				INCHES		AES-321-3001			
		TITLE:	1						
		220Y PAX SEAT ARRANGEMENT							
		A321-211							
		MSN 666							
		4121-252-321							
		SHEET 1 OF 3 SHEETS							