

*True blue*





# PRODUCT CATEGORIES

LIGHT GAUGE STEEL FRAMING HOUSE



01

02



DETACHABLE CONTAINER HOUSE

WORKSHOP & WAREHOUSE



03

04



SANDWICH PANEL HOUSE

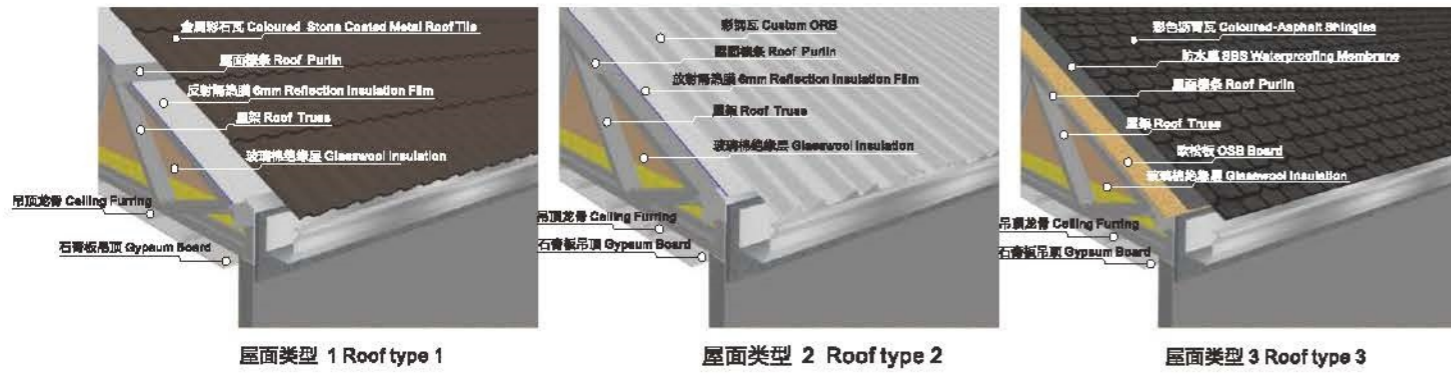




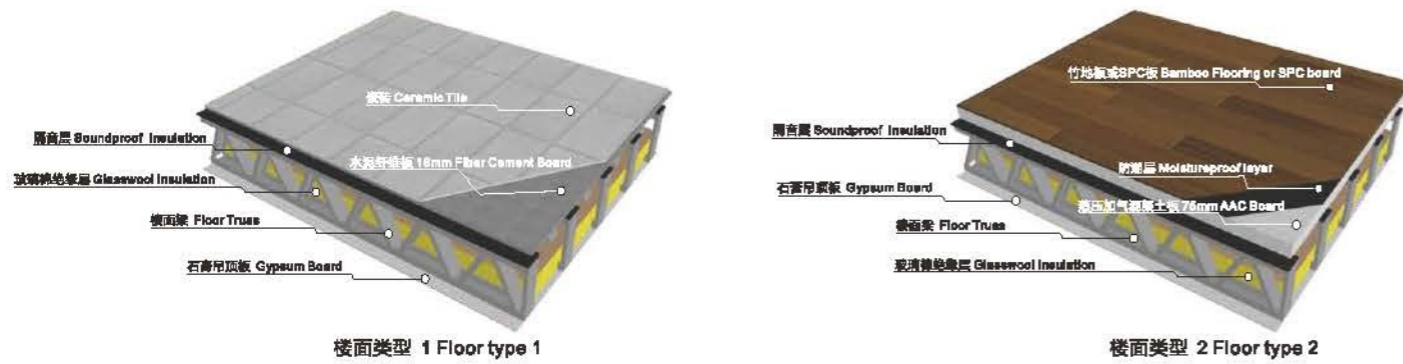
- High strength for 9 degree anti-seismic, 17 degree anti-typhoon performance.
- High prefabrication, more than 50% process are finished in the factory, comparing with traditional structure, accuracy can be within 1mm, reduce site work and cut down the construction cost.
- Hot galvanized steel framing can effectively prevent corrosion and rust. Besides, all structure are built in water-proof sandwich panel wall, no corrosion, mould, and worm damage. The life span of the structure can reach 100 years under normal circumstances.
- High strength steel makes the thickness of bearing wall greatly reduced, combined with Build-in pipes and wire, allow 20% more living area than concrete and brick house.
- By using light gauge high strength steel structure greatly reduced the weight of houses can save 50% expenses of the foundation comparing to concrete and brick house.
- Use external wall thermal insulation system makes the house "cool in summer and warm in winter".
- Many years practice and introduction of technology make the process perfect and mature technical system and stable, complete suppliers.



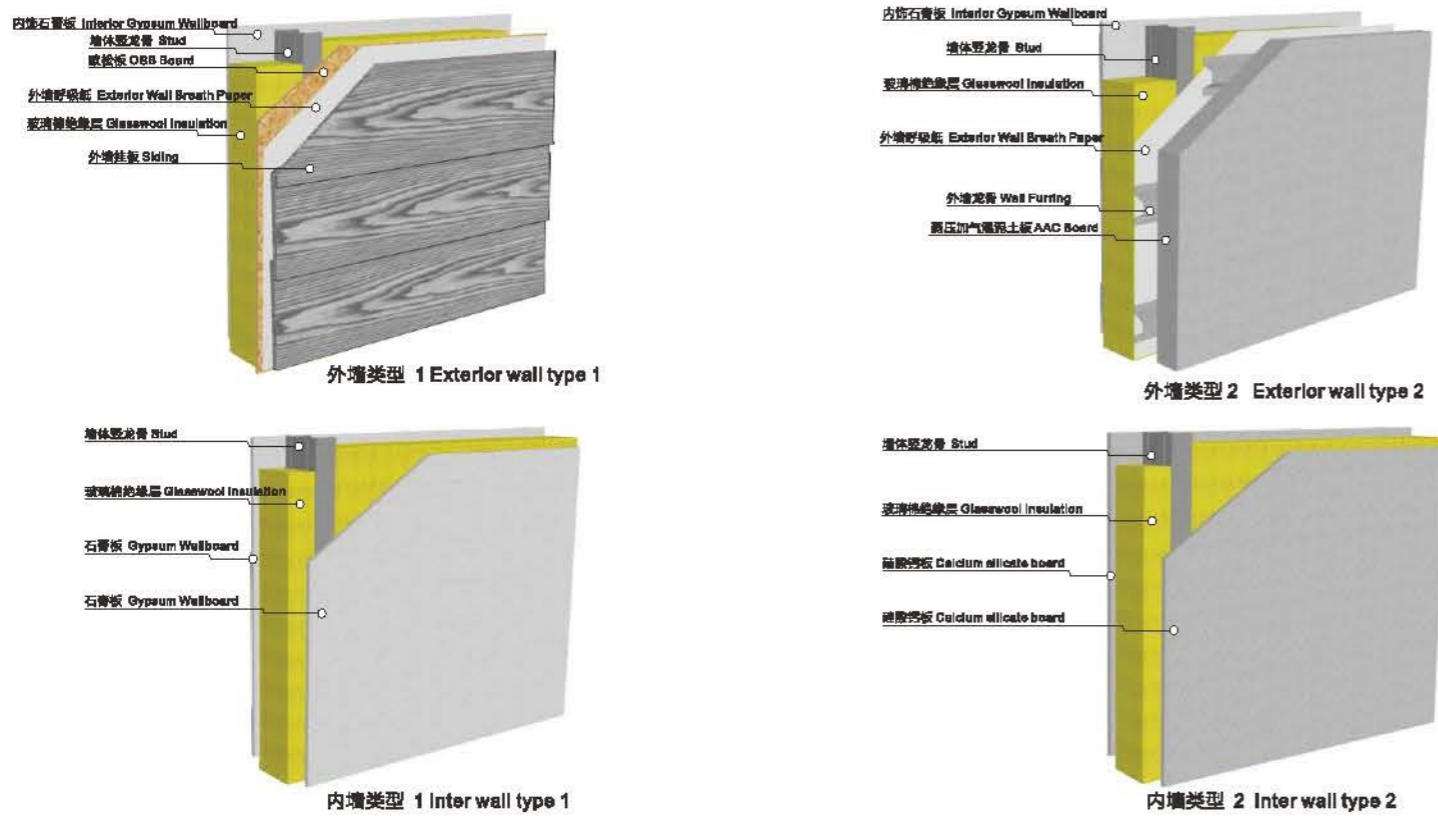
ROOF SYSTEM



楼面系统 FLOOR SYSTEM



墙面系统 WALL SYSTEM



PRE-ASSEMBLED

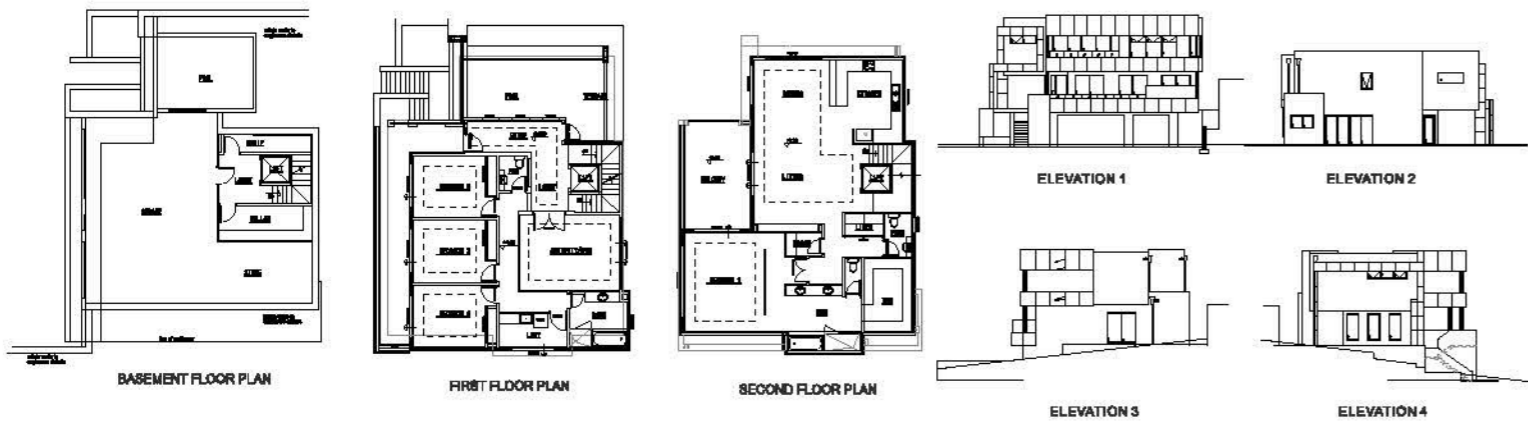
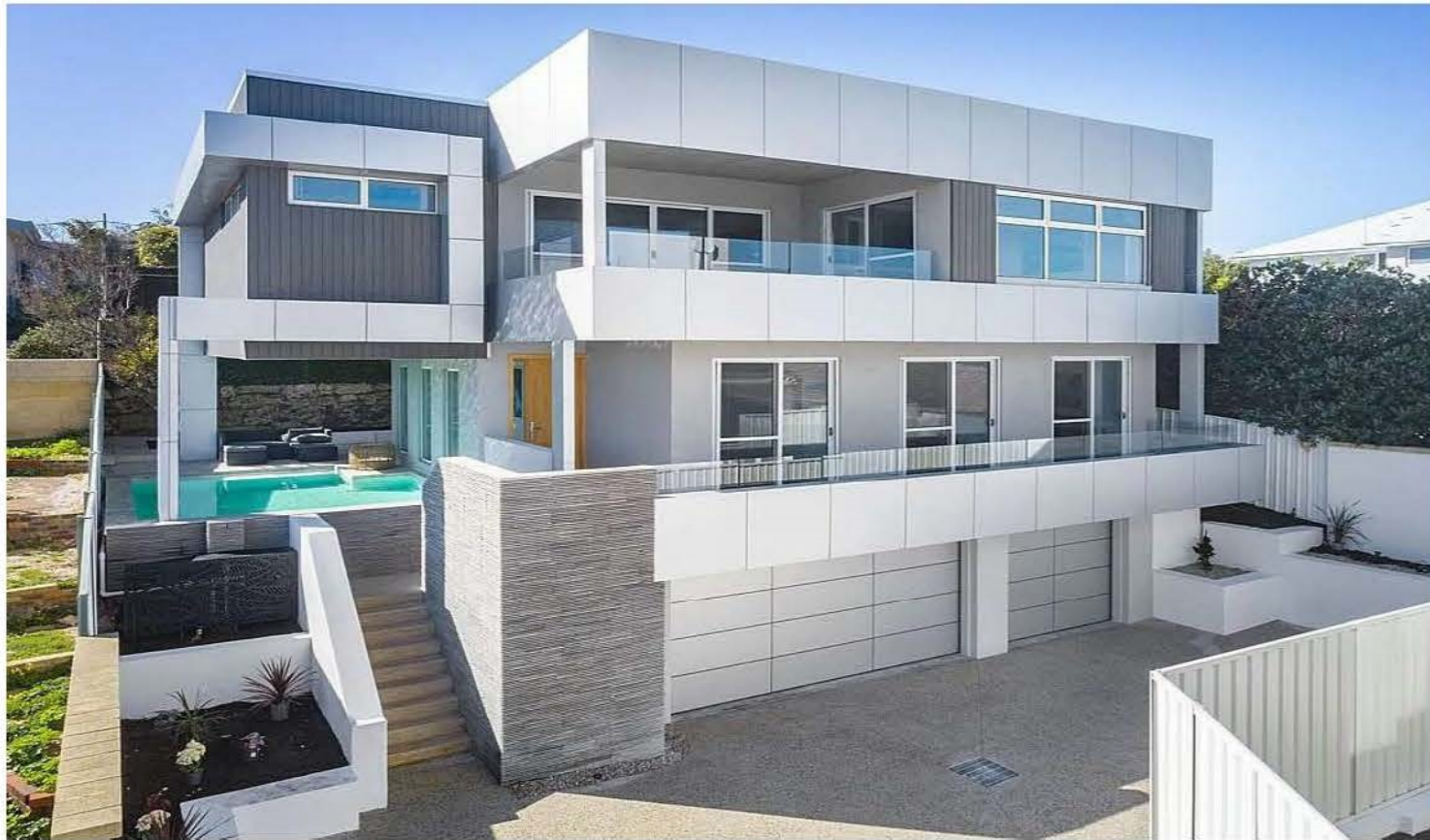


ASSEMBLED ON SITE



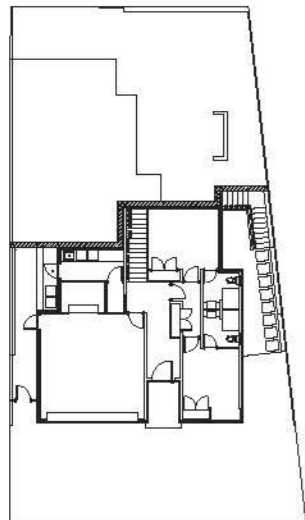


PROJECT DISPLAY

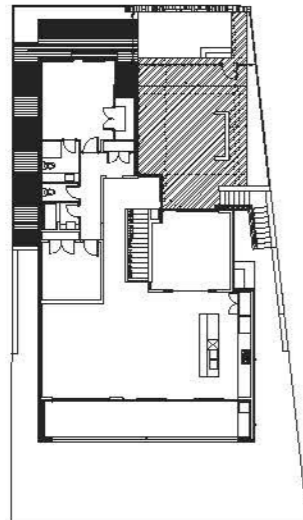




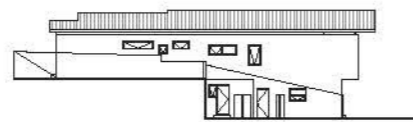
PROJECT DISPLAY



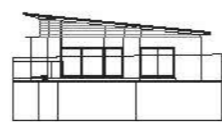
GROUND FLOOR PLAN



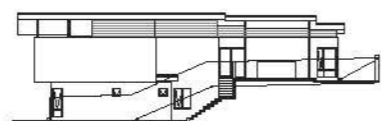
UPPER FLOOR PLAN



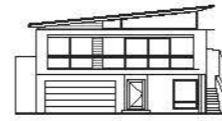
ELEVATION 1



ELEVATION 2



ELEVATION 3

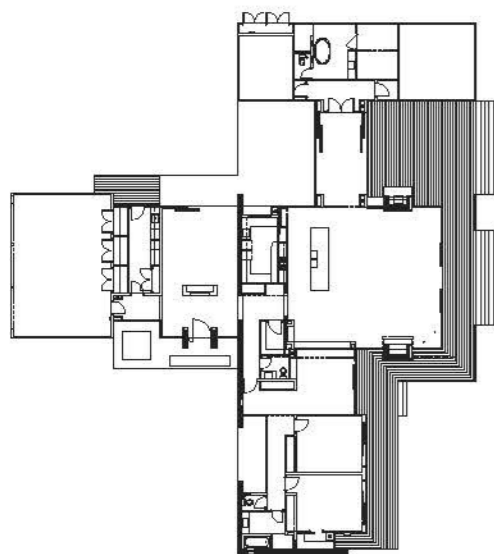


ELEVATION 4

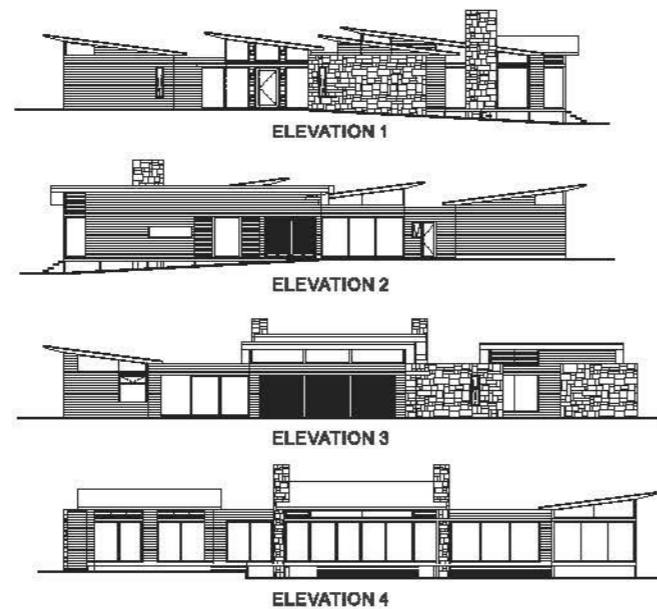




PROJECT DISPLAY

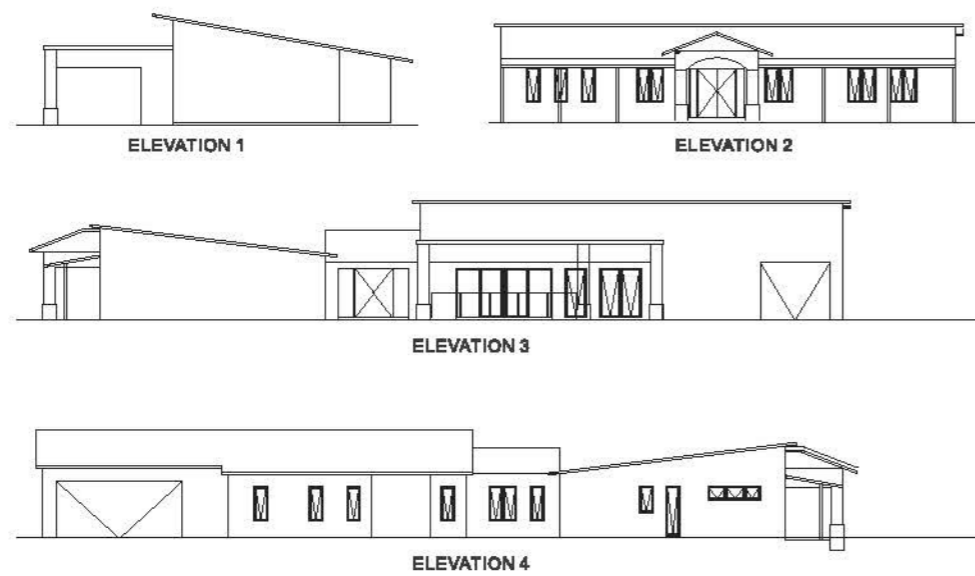
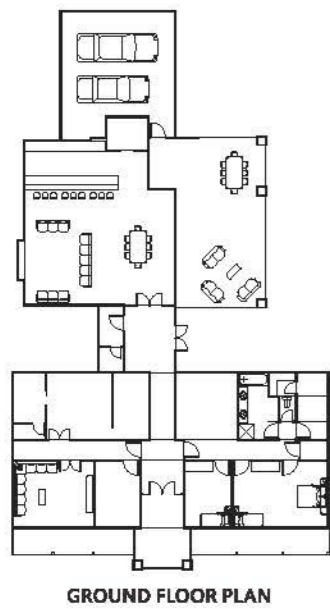


GROUND FLOOR PLAN



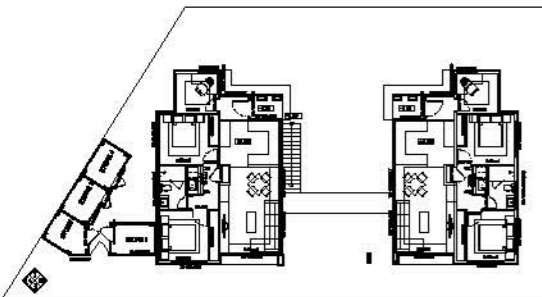


PROJECT DISPLAY





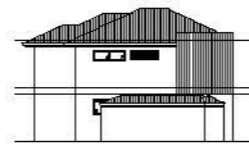
PROJECT DISPLAY



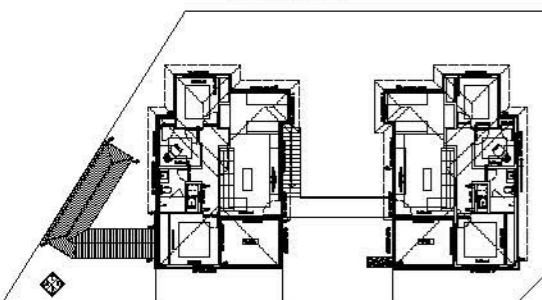
GROUND FLOOR PLAN



ELEVATION 1



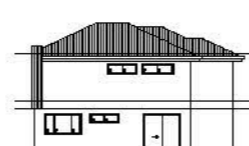
ELEVATION 2



FIRST FLOOR PLAN



ELEVATION 3



ELEVATION 4



### DETACHABLE CONTAINER HOUSE



*True blue*

- The uniquely designed detachable container is a transformation from the flat pack container house, and its water tight performance is better than the latter.
- The main structure is composed of top structure, chassis structure and four corner columns. It is fully galvanized material combined with high-quality plastic spraying technology to prevent corrosion and rust.
- Quick and convenient installation, and it can be completed by simple installation tools, without forklifts and cranes.
- Suitable for international sea transportation, domestic land transportation, and can be used as project office, construction site accommodation, temporary resident resettlement house, small holiday hotel etc.
- Can be combined long or short according to needs without any restrictions, and can stack up to two to three floors.





PROJECT DISPLAY





PROJECT DISPLAY





PROJECT DISPLAY





PROJECT DISPLAY





PROJECT DISPLAY



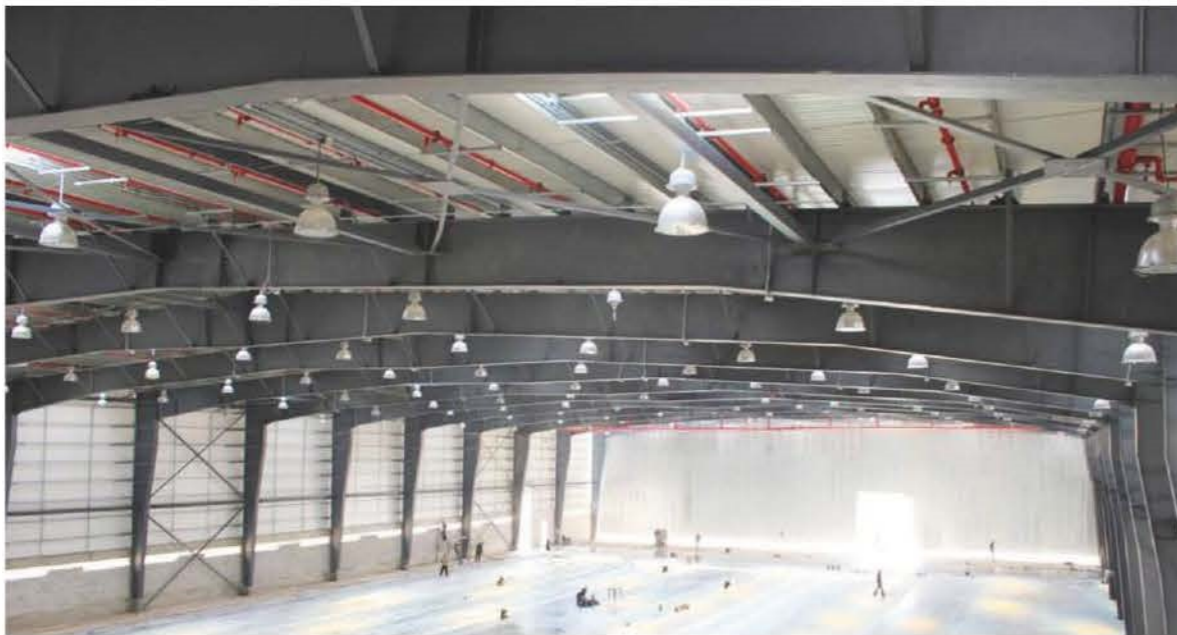




- As important member in steel structure family, portal frame is widely used in long span house, its main feature is low steel usage per unit, easy installation and maintenance, low cost.
- The main structure uses H steel, maintenance structure uses Type C or Z purlin.
- The main structure uses red lead anti-corrosive paint, using hot galvanizing treatment towards seaside buildings. Enclosure structure uses galvanized steel strip shape.
- Our company has a dedicated design team, combined with structural design software 3D3S or PKPM and detailed drawing design TEKLA STRUCTURE software, to provide customers with a full set of design drawings and installation drawings.
- Considering the difficulty of unloading containers, we will use our self-made iron pallets, which greatly facilitates customers on-site unloading.



PROJECT DISPLAY



A	B
C	D

- A Maldives Stadium Project
- B Lebanon Logistics Center Project
- C Mexico Logistics Center Project
- D Tanzania Project



PROJECT DISPLAY



- |   |   |
|---|---|
| A | B |
| C | D |
- A Lebanon Warehouse And Workshop Project  
B Lebanon Unifil Project  
C Ghana Showroom Project  
D United Arab Emirates Workshop Project



## SANDWICH PANEL HOUSE



- Prefab k house is a kind of modular house, is made by light gauge steel structure and PPGI sandwich panel, and combined using standard modules. It is a new type of energy conservation and environment protection house which is easy and convenient to install.
- It is designed for various purpose, widely used as temporary and semi-permanent site office, labor camp, canteen, warehouse, school, hospitals, affordable house. It has modularized component and connections for fixing and compounding. The sandwich panel house is designed as a light construction, consisting of floor system, wall system and roof system. It also enables compounding of 2 floors in height (ground floor+first floor) or 3 floors in height (ground floor+2 floors).
- The sandwich panel house is made of light insulation panel and offer comfortable climate in the interior due to their building and physical properties. Materials been used are environmental friendly.



*True blue*





## SANDWICH PANEL HOUSE



*True blue*

- Prefab T house is made by light steel and sandwich panel.
- Widely using in different industry, temporary house for road, railway and construction site etc.
- It can be used as temporary office, meeting room, headquarters, public accommodation, and temporary store, school, hospital, parking lots, show rooms, electric house, repairing shop, gas station etc.
- Prefab T house is the most suitable for third countries and developing country where the infrastructure construction happening everyday.
- The steel structure can be inside the wall or on the wall. The structure is connected by bolts and the walls are fixed with rivets. The steel structure parts and panels are light and easy to pack and transport.
- The prefab house can be disassembled and reassembled more than 6 times and has a service life of more than 15 years.

