



ANNA K (ex MARIE T., THOR MARIE, MARIE RIIS)

GENERAL CARGO CONTAINER FITTED
FLUSH TWEEN / FULLY BOX HOLD

Call sign: OURF2

IMO no.: 8701002

Official No.: D4554

MMSI No.: 219379000

Built: 1987 in Svendborg, Denmark

Flag: Denmark

Class: RINA fitted for carriage of Dangerous Goods

Tonnages About 1210 mts DWAT - GT 1167/NT 356

Owners: MV Anna K ApS, Svendborg, Denmark

Managers: JMB ApS, Svendborg, Denmark

Specifications:

Multipurpose non-cellular containership - imo fitted vessel with adj. tweendeck
Cranes 2 x 20 mts on portside, combinable up to about 35 mts, subject dimensions and lifting points and weight of lifting beam (vessel has no spreader/lifting beam onboard)

IMDG Fully fitted for the carriage of IMDGC Classes 1, 4, and 5 under deck and all IMO classes above deck except 7.

Dimensions Loa/beam/draft: 67.35m/11.53m/3.51m

Airdraft Fully loaded/in ballast: about 24m/about 26m

Capacity About 1631 cbm bale

Hatch 1 hatch - McGregor single pull

weatherdeck 38.33 x 7.80m

tweendeck: 38.33 x 7.80m

SQM: Tanktop 299 sqm/Tweendeck 299 sqm/Weatherdeck 299 sqm

Hold 1 box like double skinned cargo hold with hardwood flooring:

Lower hold: 38.33 x 7.80m

Upper hold: 38.33 x 7.80m

Height lower hold: 1.62m, respectively 2.77m

Height upper hold: 3.85m, respectively 2.70m

Height tanktop to under hatch covers: 5.77m

Hold equipment Electrical ventilation, about 30 air changes per hour (basis empty hold), CO2 system, sprinkler system and smoke detectors

Container intake Fitted for up to 61 TEU - 36 under/25 on deck, intake always subject to vessels trim/stability/visibility and permissible weights

Homogeneous intake 12/14/16/18/20 mts per unit, intake 61/61/57/51/46 units

Stack loads TEU: hatch/tanktop: 18 mts/45 mts

FEU: hatch/tanktop: -/60 mts

Reefer plugs 12 reefer plugs 380 V/50 c - 6 plugs located in each crane tower

Permissible loads Max 1.40 mts/sqm on hatch - 1.50 mts/sqm on tween deck - 5.00 mts/sqm on tanktop

Main engine Deutz MWM type TBD 440 6cyl 599 kW

Aux engine 2 x Deutz MWM type TBD 234 v8 249 kW

Harbor gen 1 x Deutz air cooled 48 kW

Speed/consumption About 8.5 knots on about 2 mts gasoil (80%)

(ISO 8217 of 1996 - max density 0.86 and max sulphur 0,21)

Speed and consumption figures based on max 2 beaufort, calm sea, deep waters, neutral current and subject to vessels trim & stability.

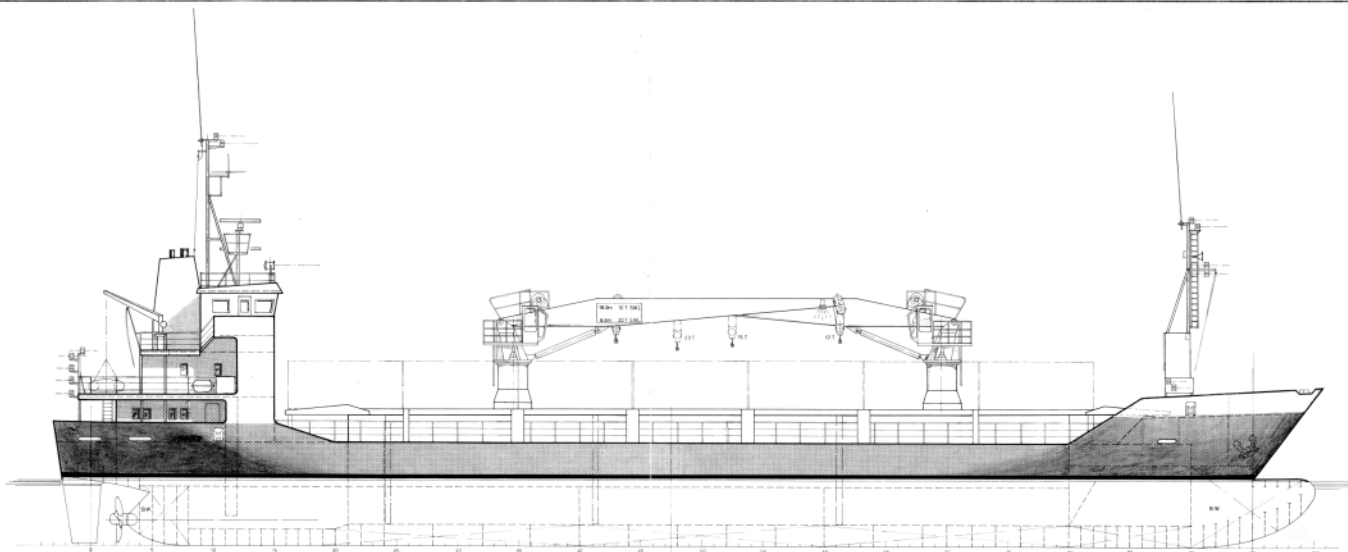
Port consumption About 0.25 mts idle/about 0.5 mts working

Tank capacities 170 cbm gasoil/37 cbm fresh water/597 cbm water ballast

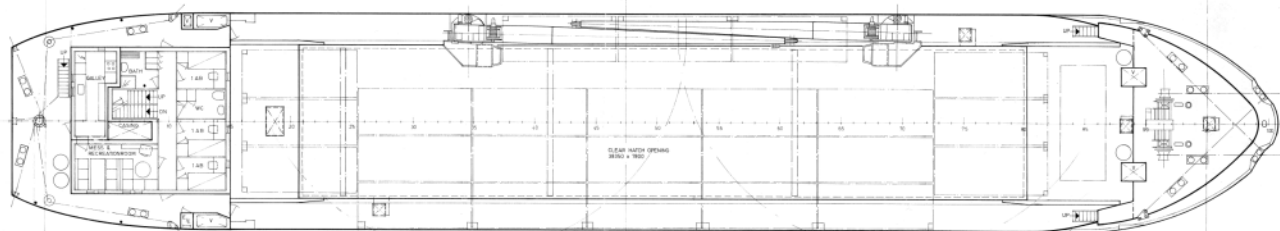
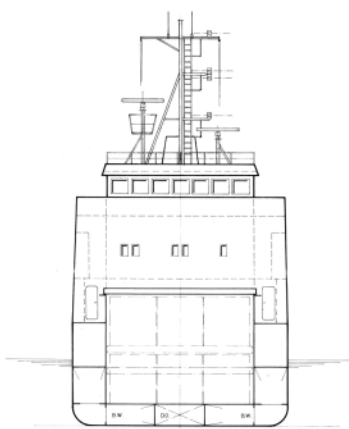
Shaft Generator Stamford 229 kW

Bow thruster No

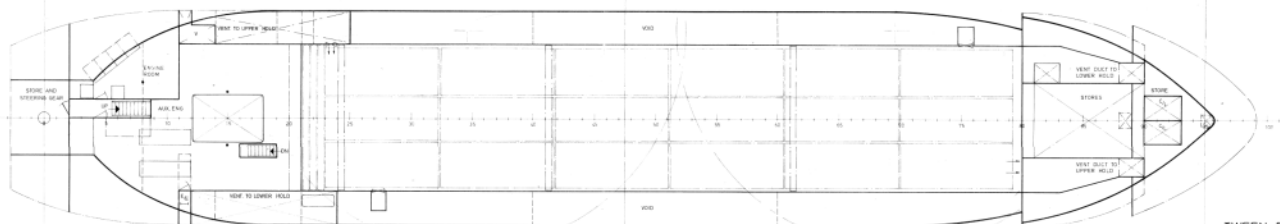
All details believed to be correct but without guarantee



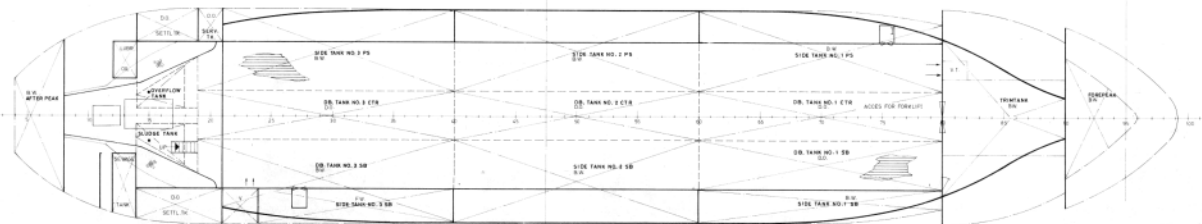
PROFILE



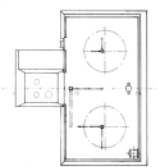
UPPER DECK



TWEEN DECK



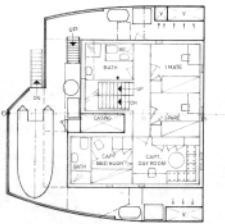
TANKTOP



TOP OF WHEEL HOUSE



BRIDGE DECK



BOAT DECK

61 TEU BOX HOLD COASTER

PRINCIPAL DIMENSIONS:

LENGTH OVERALL	67.35 M
LENGTH BETWEEN P.P	61.75 M
BREADTH OA	11.40 M
DEPTH MLD. TO UPPER DECK	5.50 M
DEPTH MLD. TO TWEEN DECK	APPR. 3.15 M
DRAFT	APPR. 3.50 M

- M/V Thor Mette
- M/V Thor Alice
- M/V Thor Marie
- M/V Thor Kirsten
- M/V Thor Inger

S A/S SVENDSBORG SKIBSVAERFT A/S	SCALE 1:100	TECH. D. 11.84	DOORNO. 1
	REV. NO.	NO. OF SHEETS	NO. OF SHEETS
GENERAL ARRANGEMENT		181	181-511-001