



CARGO BARGE SEAWAYS 21

SPECIFICATIONS

282 Feet – Ballastable



CARGO BARGE SEAWAYS 21

SPECIFICATIONS

A rugged, sturdy deck-loading Barge built under ABS Class.

- Deck Loading 10 T / m²
- Ballastable Barge
- 3 Forward Smit Brackets 80 T SWL
+ 3 Aft Smit Brackets 80 T SWL
- Removable Guard Rails (human support)
- Stanchions for Deck Cargo support
- Side Shell plating 30 mm thick to absorb shocks
- Surfer / Boat Landing
- Winch for bridle recovery

CLASSIFICATION

ABS + Ballastable Barge

FLAG

Singapore

DIMENSIONS

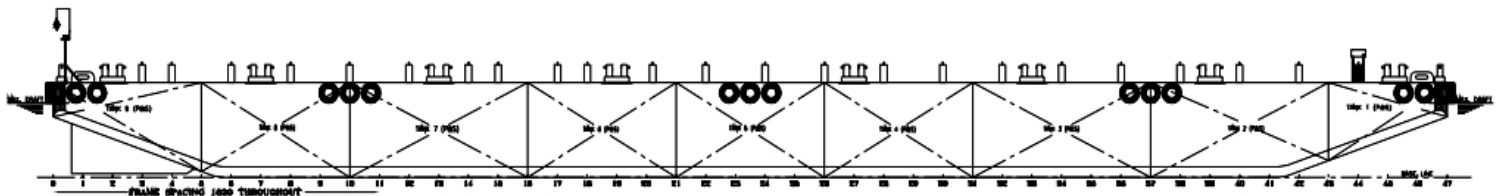
Length OA:	86.01 m (282 ft)
(without fender)	
Breadth mid:	27.50 m (90 ft)
Depth mid:	5.50 m
Draft mid:	4.38 m
Deadweight:	Approx. 8000 T
Deck strength:	10 T / m ²
Free deck area:	Approx. 2020 m ²
Gross tonnage:	3387 T
Net tonnage:	1016 T

NAME OF VESSEL

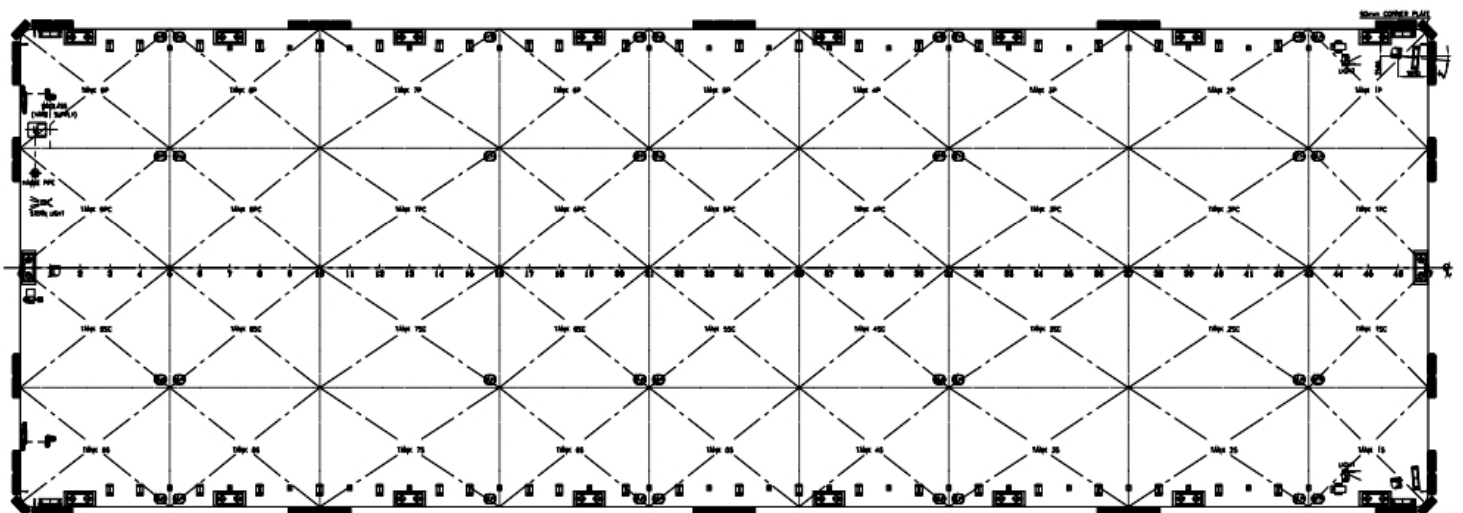
Seaways 21

BUILT

January 2006 at PT Britoil Offshore, Indonesia



Outboard Profile



Main Deck