

SPECIFICATIONS

A320-232

Manufacturer Airbus SAS

Model Designation A320-232

Date of Manufacture June 2012



AIRCRAFT GENERAL INFORMATION

Manufacturer serial number	
Manufacturer date	30 JUN 2012
Aircraft Registration	
AIRFRAME	
Total airframe hours	25' 532
Total cycles	11'046
Status date	05-MARCH-2024

MAINTENANCE STATUS	
6Y- Check interval	72 MO
12Y- Check interval	144 MO
Last C – check	20-JUN-2021 25'415 FH & 11' 033 FC
Last 6Y - check	23-MAR-2018 19'023 FH & 8' 288 FC
Last 12Y - check	NONE

Engine/Apu Details	Engine 1	Engine 2	APU
Manufacturer	CFMI	CFMI	Honeywell
Model	-5B4/3	- 5B4/3	131-9[A]
Engine / Apu Status	Engine 1	Engine 2	APU
Total time since new	14'435	23'914	20'012
Total Cycles since new	7'824	10'423	10'129
Last shop visit Date	NONE	14-DEC-2016	12-NOV-2020

Scope of last shop visit	N/A [First Run]	Perfomance Restoration+ LLP Replacement	Permonance Restoration
--------------------------	------------------	---	------------------------

Hours Since Last shop visit	N/A	9'981	98
Cycles Since Last Shop Visit	N/A	4'545	153
First LLP Limiter	5'024	15'842	TBA
Status Date	05-MARCH-24	05-MARCH-24	05-MARCH-24

INTERIOR	
Cabin Interior	Details
Strecher Capable	Yes
Interior Placards & Signs	English Language Only
Secure Cockpit Door Fitted	Yes





Seats Specification	covers	Manufacturer	Pitch	In-Seat Video	Qty
Business Class Seats	Textile	B/E Aerospace	45"	Yes	12
Economy Class Seats	Textile	SAFRAN	30"	No	138Y
Cabin Attendants Seats	Leather	Goodrich			5

Seats & Lavatories	Feature	Quantity
Center Life Raft Storage	No	
Lavatory Qty		3
Lavatory System	Vacuum Flush	

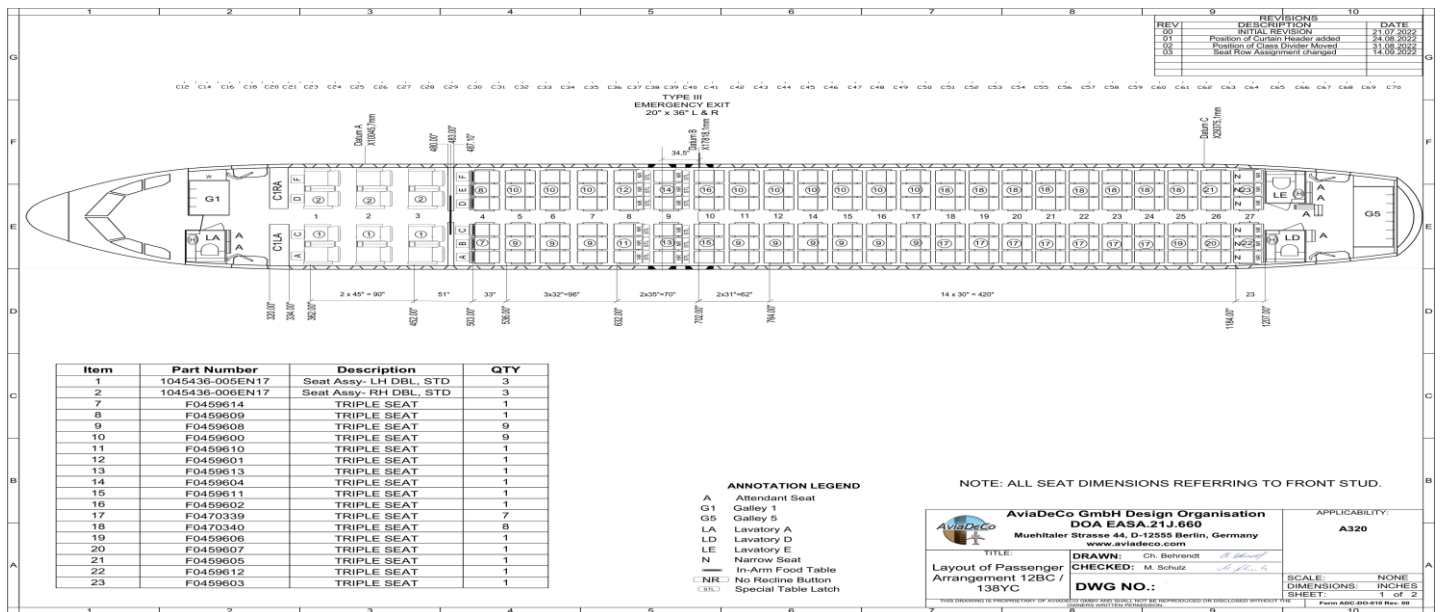
--	--	--

Handicapped Enabled Lavatory Qty	3
Baby Changing Table Qty	3

Position	Manufacturer	Type	Standard
G1	Sell GMBG Premium Aircraft Inter	Wet	
G5	Sell GMBG Premium Aircraft Inter	Wet	
IFE & ELT	Feature	Details	Quantity
Fixed ELT	-	P/N 51090130-2	1
Portable ELT	-	P/N 1151324-1M203	1

Passenger Entertainment Audio	None
Passenger Entertainment Video	None

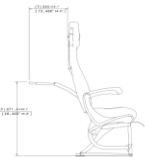
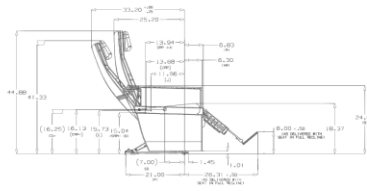
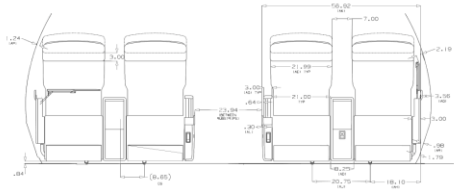
FUEL SYSTEM	
Description	Details
Fuel Qty Indication Units	Kilos
Tank Capacity	18,729 Kgs



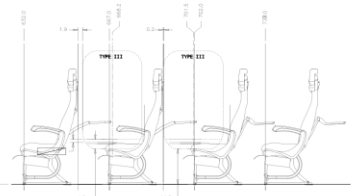
BC SEAT

EC SEAT

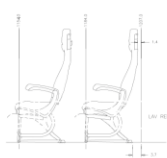
REVISIONS		
REV	DESCRIPTION	DATE
00	INITIAL REVISION	21.07.2022
01	Position of CurtainHeader added	24.08.2022
02	Position of Class Divider Moved	31.08.2022
03	Seat Row Assignment changed	14.09.2022



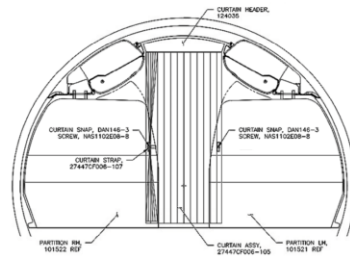
Overwing Exit View



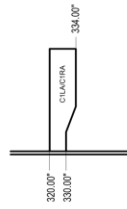
Last Seat Row View



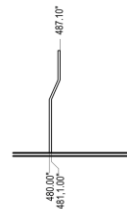
Class Divider View looking aft



FWD Wardrobe View



Class Divider View



Curtain Header Installation at STA 482

<p>AviaDeCo GmbH Design Organisation DOA EASA.21J.660 Muehtaler Strasse 44, D-12555 Berlin, Germany www.aviadeco.com</p>	APPLICABILITY: A320	
	TITLE: Layout of Passenger Arrangement 12BC / 138YC	DRAWN: Ch. Behrendt CHECKED: M. Schutz
THE DRAWING IS PROPRIETARY OF AVIADECO GMBH AND SHALL NOT BE REPRODUCED OR DISCLOSED WITHOUT THE COMPANY'S WRITTEN PERMISSION.		