



**EVERYTHING
UNDER THE SUN**

<http://AsianDragonIntl.com>

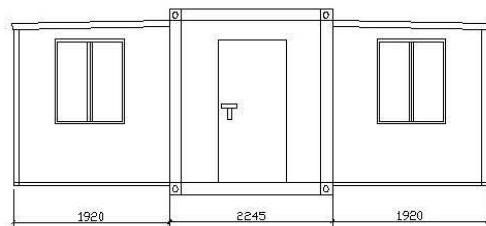
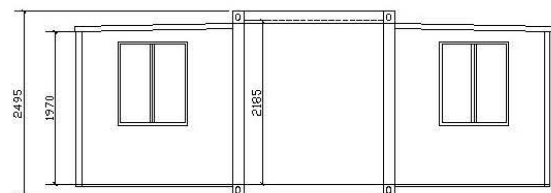
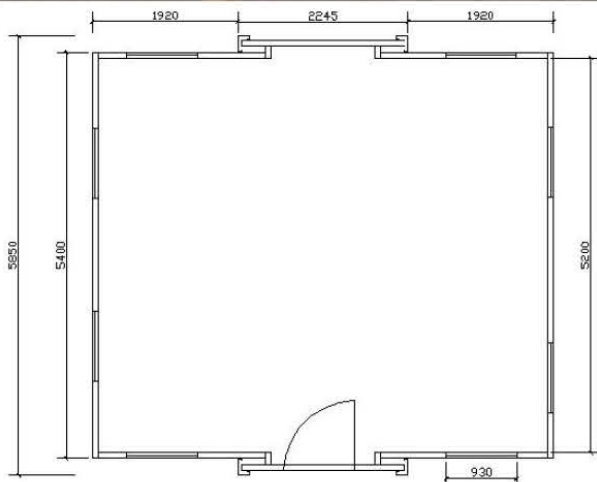


CATALOGUE OF EXPANDABLE CONTAINER HOUSE

expandable container house is suitable for the place where the labor cost is expensive. because we pre-made bedrooms bathroom and kitchen in our factory, when you receive it, just unfold it and live in.

MODEL	SPECIFICATION
DRF-1	<p>1*40HC container can load 2 units open room with steel door</p> <p>1)openable size 5850mm*6085mm*2500mm Closed size: 5850mm*2250mm*2500mm</p> <p>2)75mm eps sandwich panel for wall and roof</p> <p>3)16mm reinforced MGO board+1.6mm pvc tile for floor</p> <p>4)with 1 steel door(930*2030mm), 8 pvc double glazed sliding windows(930*930mm);</p> <p>5)with electricity, DB box, switch, sockets, A/C sockets, wires, etc.;</p>

PICTURES



MODEL	SPECIFICATION
-------	---------------



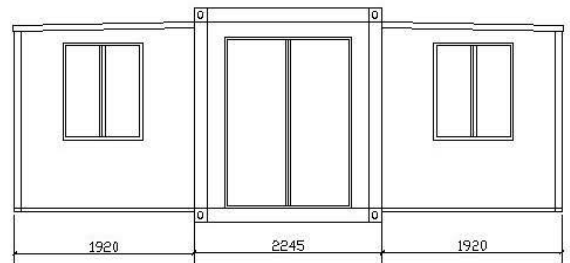
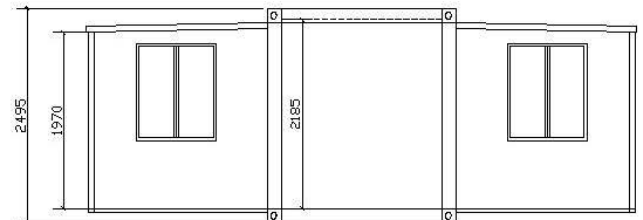
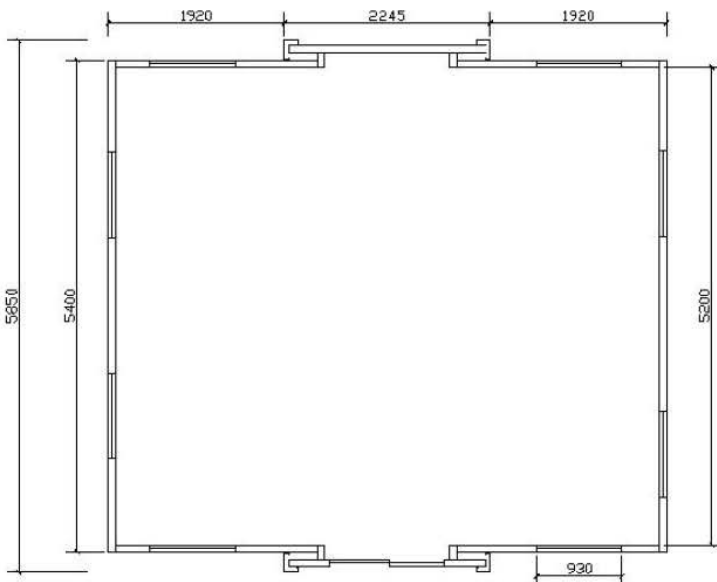
**EVERYTHING
UNDER THE SUN**

<http://AsianDragonIntl.com>



DRF-2	<p>1*40HC container can load 2 units open room with hinged door</p> <p>1)openable size 5850mm*6085mm*2500mm Closed size: 5850mm*2250mm*2500mm;</p> <p>2)75mm eps sandwich panel for wall and roof;</p> <p>3)16mm reinforced MGO board+1.6mm pvc tile for floor;</p> <p>4)with 1 aluminum hinged door door(W1300*H2000mm),8 pvc double glazed sliding windows(930*1130mm);</p> <p>5)with electricity, DB box, switch, sockets, A/C sockets, wires, etc</p>
-------	---

PICTURES



MODEL	SPECIFICATION
DRF-3	1*40HC container can load 2 units



**EVERYTHING
UNDER THE SUN**

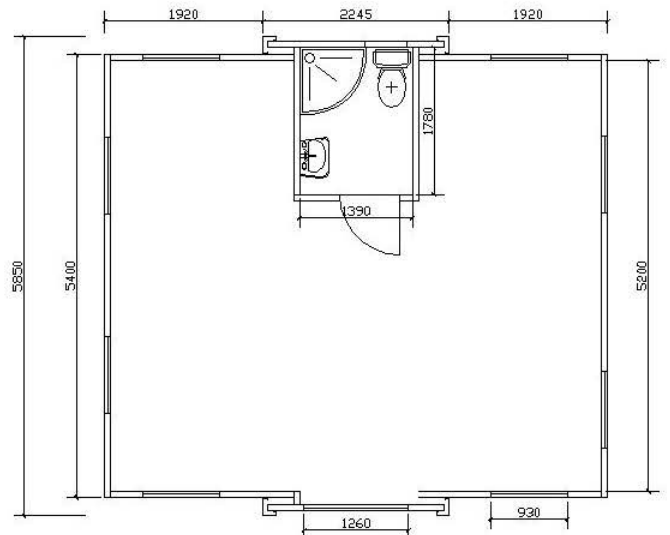
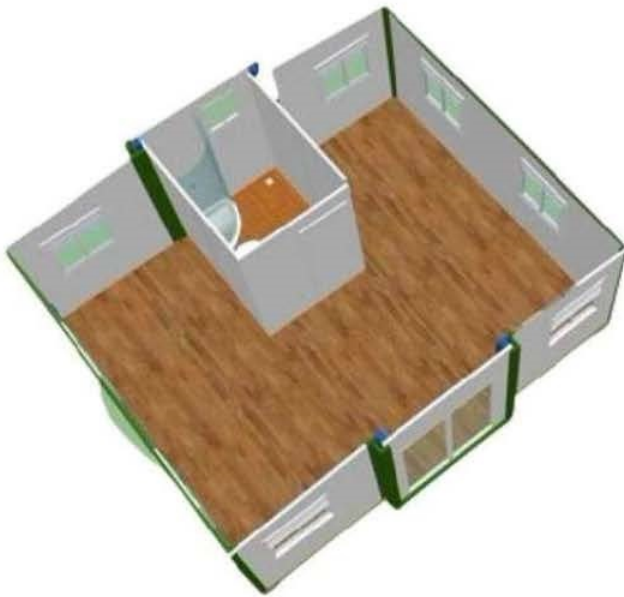
<http://AsianDragonIntl.com>



Open Space with a Toilet Layout

- 1) openable size 5850mm*6085mm*2500mm Closed size: 5850mm*2250mm*2500mm);
- 2) 75mm eps sandwich panel for wall and roof;
- 3) 16mm reinforced MGO board+1.6mm pvc tile for floor;
- 4) with 1 aluminum double glazed hinged door(W1300*H2000mm), 8 pvc double glazed sliding windows(930*930mm), 1 bathroom exhaust fan;
- 5) with electricity, DB box, switch, sockets, A/C sockets, wires, etc.;
- 6) with bathroom(shower, shower tray, seat toilet, wash basin, plumbing)

PICTURES



MODEL	SPECIFICATION
DRF-4	1*40HC container can load 2 units 1 Bedroom Layout



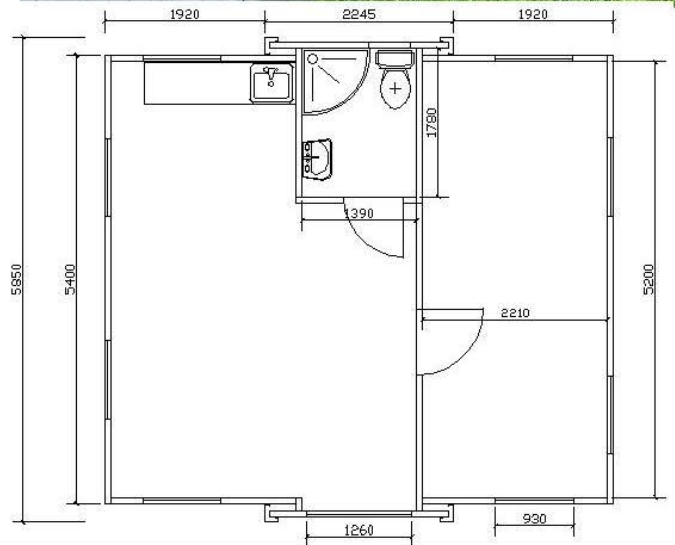
**EVERYTHING
UNDER THE SUN**

<http://AsianDragonIntl.com>



- 1)openable size 5850mm*6085mm*2500mm Closed size: 5850mm*2250mm*2500mm;
- 2)75mm eps sandwich panel for wall and roof;
- 3)16mm reinforced MGO board+1.6mm pvc tile for floor;
- 4)with 1 aluminum double glazed hinged door(W1260*H2000mm), 8 pvc double glazed sliding windows(930*930mm), 1 bathroom exhaust fan;
- 5)with electricity, DB box, switch, sockets, A/C sockets, wires, etc.;
- 6)with bathroom(shower,shower tray,seat toilet,wash basin,plumbing);
- 7)with one bedroom;
- 8)with 1.8m long kitchen

PICTURES



MODEL	SPECIFICATION
DRF-5	1*40HC container can load 2 units 2 Bedroom Layout 1)openable size 5850mm*6085mm*2500mm Closed size: 5850mm*2250mm*2500mm;



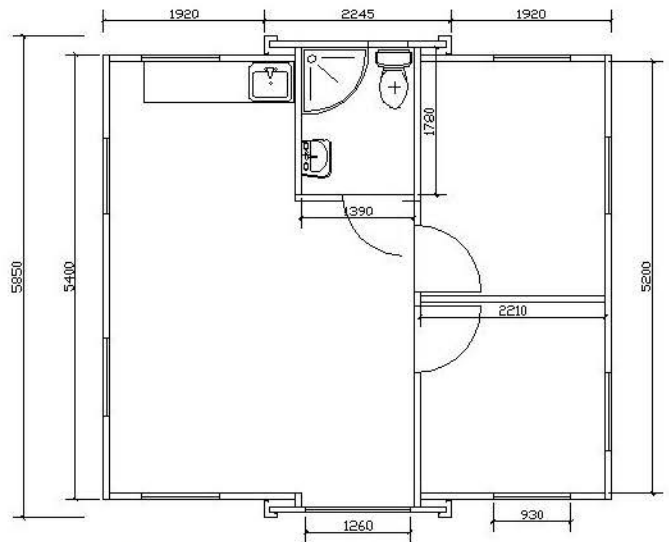
EVERYTHING UNDER THE SUN

<http://AsianDragonIntl.com>



- 2)75mm eps sandwich panel for wall and roof;
- 3)16mm reinforced MGO board+1.6mm pvc tile for floor;
- 4)with 1 aluminum double glazed hinged door(W1260*H2000mm), 8 pvc double glazed sliding windows(930*930mm), 1 bathroom exhaust fan;
- 5)with electricity, DB box, switch, sockets, A/C sockets, wires, etc.;
- 6)with bathroom(shower,shower tray,seat toilet,wash basin,plumbing);
- 7)with two bedrooms;
- 8)with 1.8m long kitchen

PICTURES

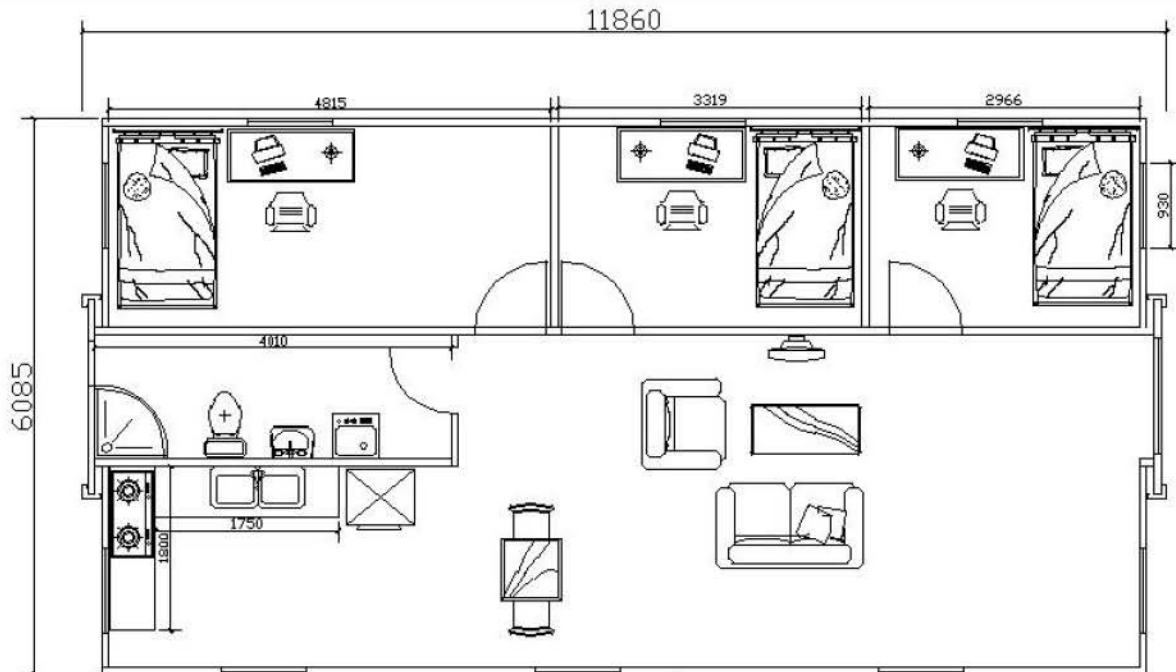


MODEL	SPECIFICATION
DRF-40-1	1*40HC container can load 1 unit 3 Bedroom Layout 1)openable size 11860mm*6085mm*2500mm Closed size: 11860mm*2250mm*2500mm; 2)75mm eps sandwich panel for wall and roof;



- 3)16mm reinforced MGO board(two sides plywood)+1.6mm pvc tile for floor;
- 4)with 1 aluminum double glazed hinged door(W1260*H2000mm), 10 pvc double glazed sliding windows(930*930mm), 1 bathroom exhaust fan;
- 5)with electricity, DB box, switch, sockets, A/C sockets, wires, etc.;
- 6)with bathroom(shower,shower tray,seat toilet,wash basin,plumbing);
- 7)with two bedrooms;
- 8)with L shape kitchen

PICTURES



MODEL	SPECIFICATION
DRF-40-2 Luxury 40ft expandable container house	1*40HC container can load 1 unit Luxury 40ft expandable container house(higher quality window,front full glass door,extra sliding door on side,luxury bathroom,wood floor) 1)openable size 11860mm*6085mm*2500mm Closed size: 11860mm*2250mm*2500mm; 2)75mm eps sandwich panel for wall and roof;



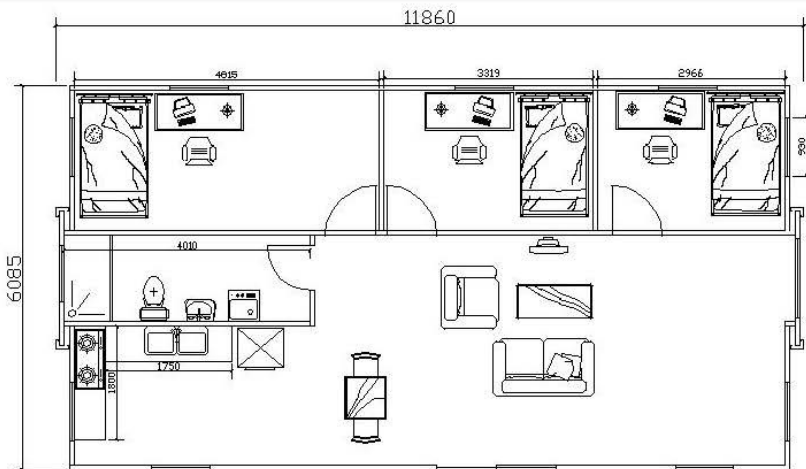
**EVERYTHING
UNDER THE SUN**

<http://AsianDragonIntl.com>



- 3)16mm reinforced MGO board(two sides plywood)+12mm composite wood floor;
- 4)with 1 aluminum double glazed hinged door+fixed glass on middle front, 9 aluminum hinged window(930*930mm), 1 bathroom window 930*500mm;
- 5)with electricity, DB box, switch, sockets, A/C sockets, wires, etc.;
- 6)with 800*1200mm glass shower cabin,seat toilet,wash basin,plumbing;
- 7)with three bedrooms;
- 8)with L shape kitchen;
- 9)with extra one W1900*H2000mm aluminum sliding door

PICTURES

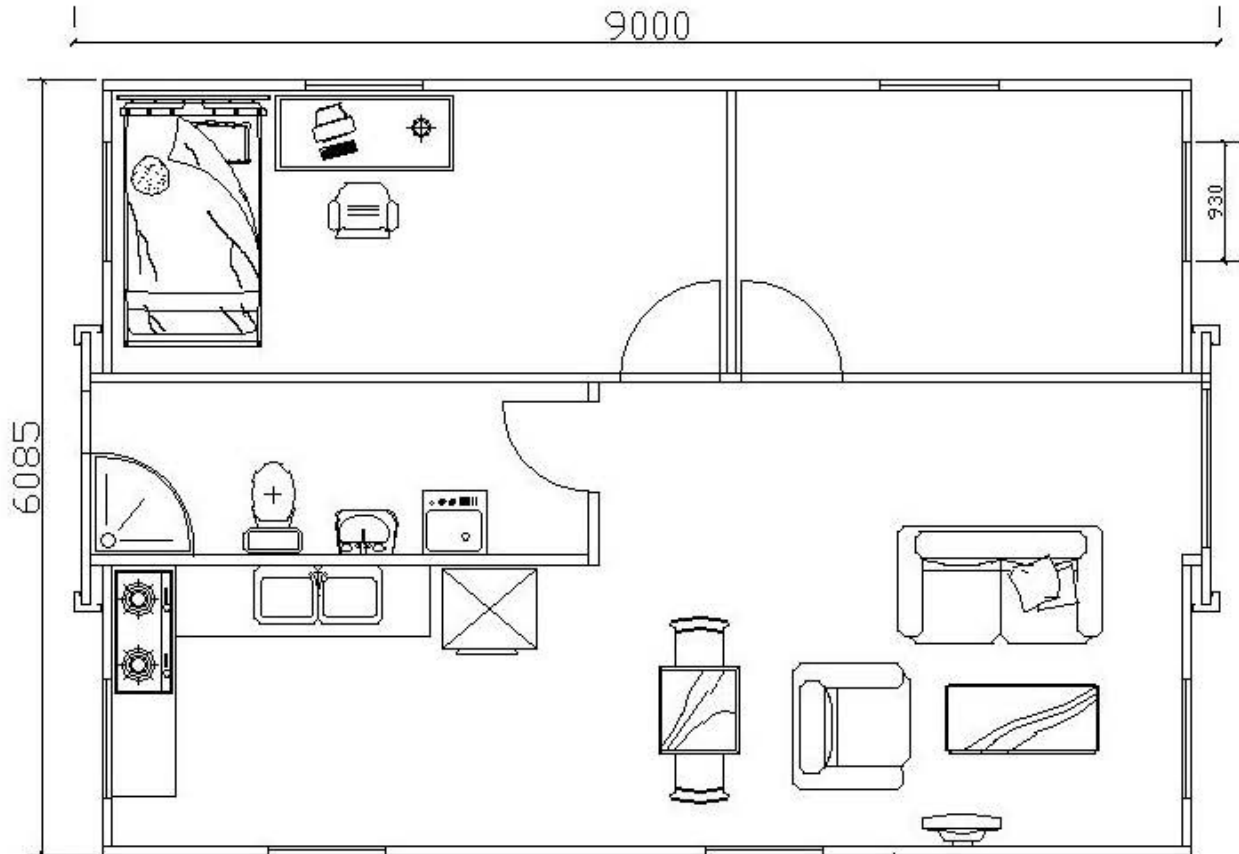


MODEL	SPECIFICATION
DRF-30-1	<p>1*40HC container can load 1 unit</p> <p>2 Bedroom Layout</p> <p>1)openable size 9000mm*6085mm*2500mm Closed size: 9000mm*2250mm*2500mm;</p> <p>2)75mm eps sandwich panel for wall and roof;</p> <p>3)16mm reinforced MGO board(two sides plywood)+1.6mm pvc tile for floor;</p> <p>4)with 1 aluminum double glazed hinged door(W1260*H2000mm), 8 pvc double glazed sliding</p>



- windows(930*930mm), 1 bathroom exhaust fan;
- 5)with electricity, DB box, switch, sockets, A/C sockets, wires, etc.;
- 6)with bathroom(shower,shower tray,seat toilet,wash basin,plumbing);
- 7)with two bedrooms;
- 8)with L shape kitchen

PICTURES



MODEL	SPECIFICATION
DRF-S	<p>1*40HC container can load 6 units open room with steel door 1)openable size L5900mm*W4760mm*H2480mm Closed size: L5900mm*W700mm*H2480mm; 2)75mm eps sandwich panel for wall and roof; 3)reinforced MGO board(two sides plywood)+pvc tile for floor; 4)with 1 steel security door(W930*H2030mm), 4 pvc double glazed sliding windows(930*900mm) ; 5)with electricity, DB box, switch, sockets, A/C sockets, wires, etc.</p>

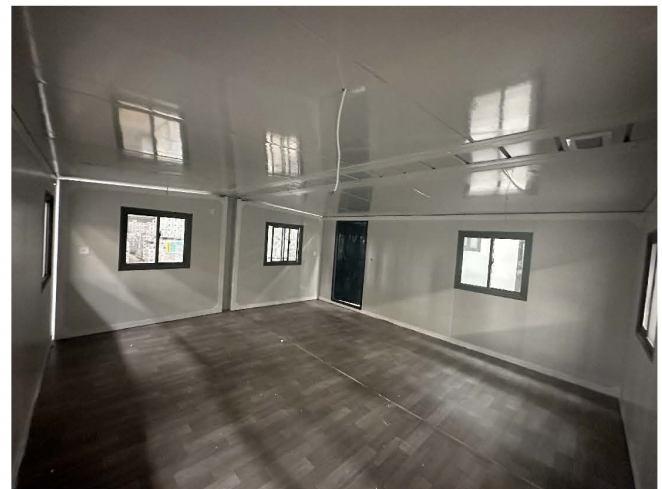
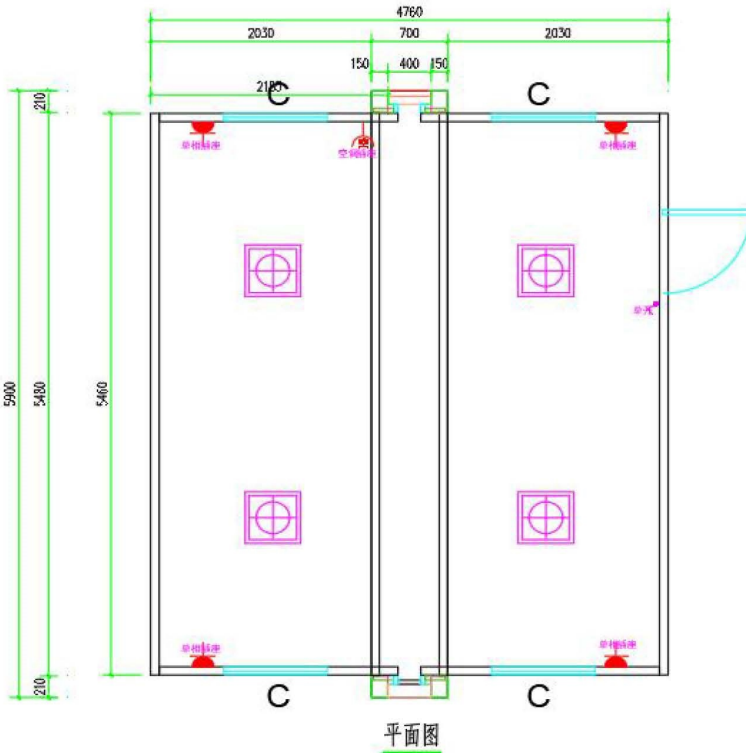


**EVERYTHING
under THE SUN**

<http://AsianDragonIntl.com>



PICTURES



MODEL	SPECIFICATION	PRICE
With wall cladding	20ft expandable container house with metal insulated wall cladding	Plus USD1513
	30ft expandable container house with metal insulated wall cladding	Plus USD1850
	40ft expandable container house with metal insulated wall cladding	Plus USD2250

PICTURES



**EVERYTHING
UNDER THE SUN**

<http://AsianDragonIntl.com>



Color options

MATERIALS OPTIONS

Name	STANDARD	UPGRADED
Living area floor	PVC floor	12mm thickness composite floor tile



**EVERYTHING
UNDER THE SUN**

<http://AsianDragonIntl.com>



		plus US 10/m2
Bathroom floor	PVC floor	Ceramic tile plus US 10/m2
shower	900*900mm glass shower cabin 	Square type shower cabin (bathroom floor should be Changed to ceramic tile) Plus USD120 
window	Pvc sliding window double glazed 	Aluminum hinged window Plus USD68/window 



**EVERYTHING
under THE SUN**

<http://AsianDragonIntl.com>



Bathroom interior
wall cladding

Without wall cladding just
standard sandwich panel wall



Add stone plastic interior wall cladding on top of
sandwich panel wall
PLUS USD440/bathroom

