

# ENGINE CONDITION MONITORING

## A320-232

February 2024

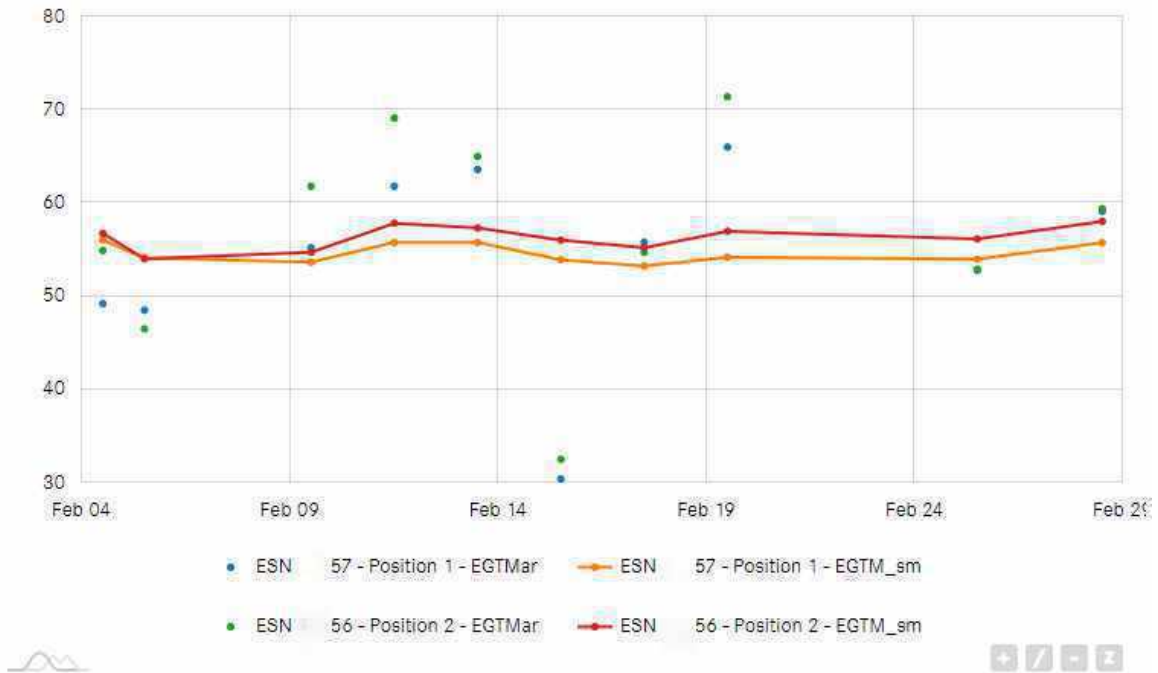
Prepared by:



Engine Position	#1 (LH)	#2 (RH)
Engine Type	V2527-A5	V2527-A5
ESN	VXXX57	VXXX56
EPR date & Shop	03/05/2017 MTU	10/06/2018 IAI
EPR @ TSN	33978	34188
EPR @ CSN	19592	19902
Engine TSN	56465:44	49953:05
Engine CSN	28917	27572
LLP 1st Limiter	10675	12330
EGT Margin (trend)	56DEG	58DEG

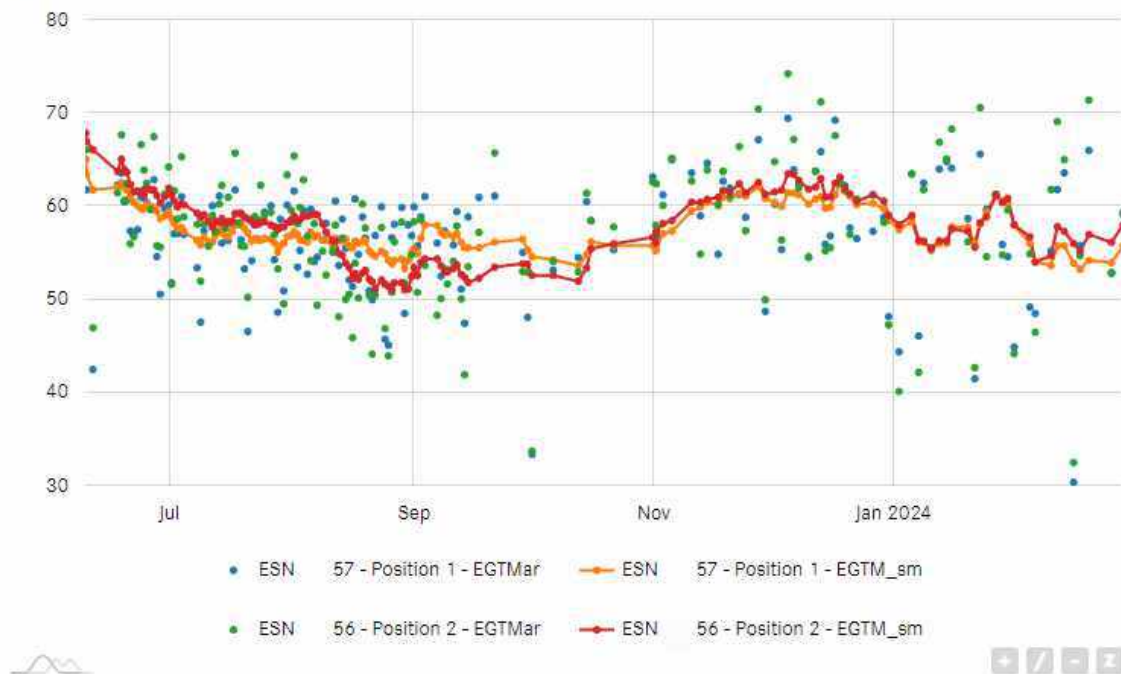
### EGT Margin

TAKEOFF: EGTMar - EGTM\_sm

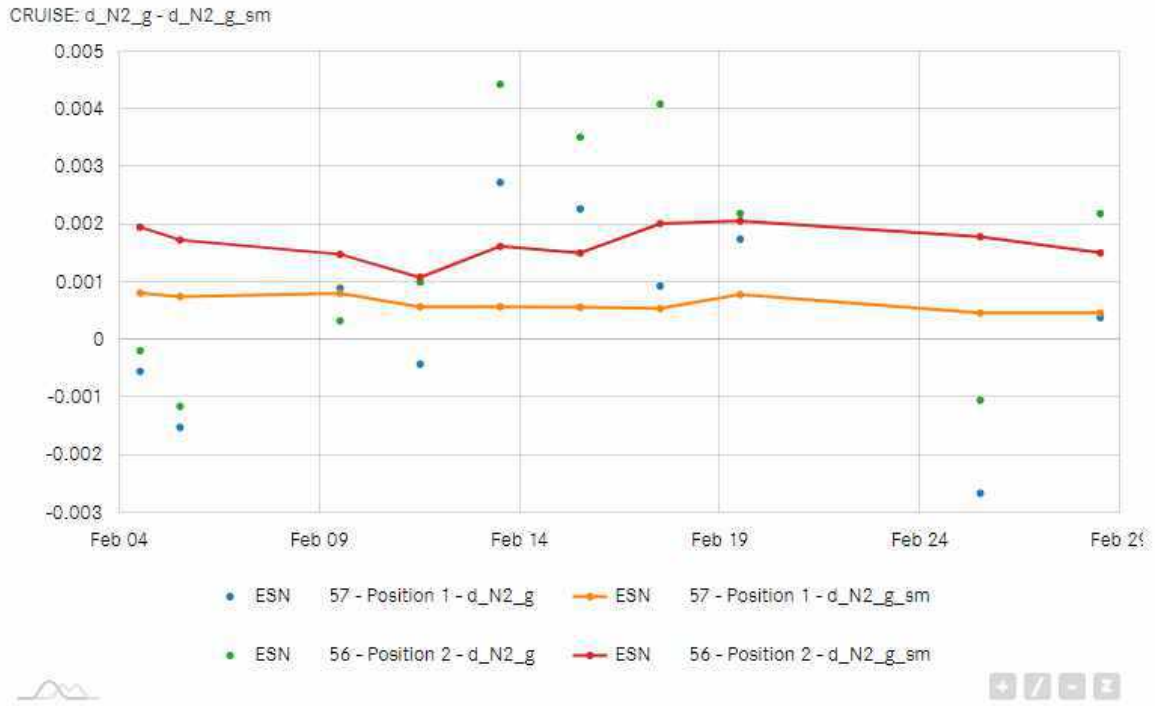


### Long term trend

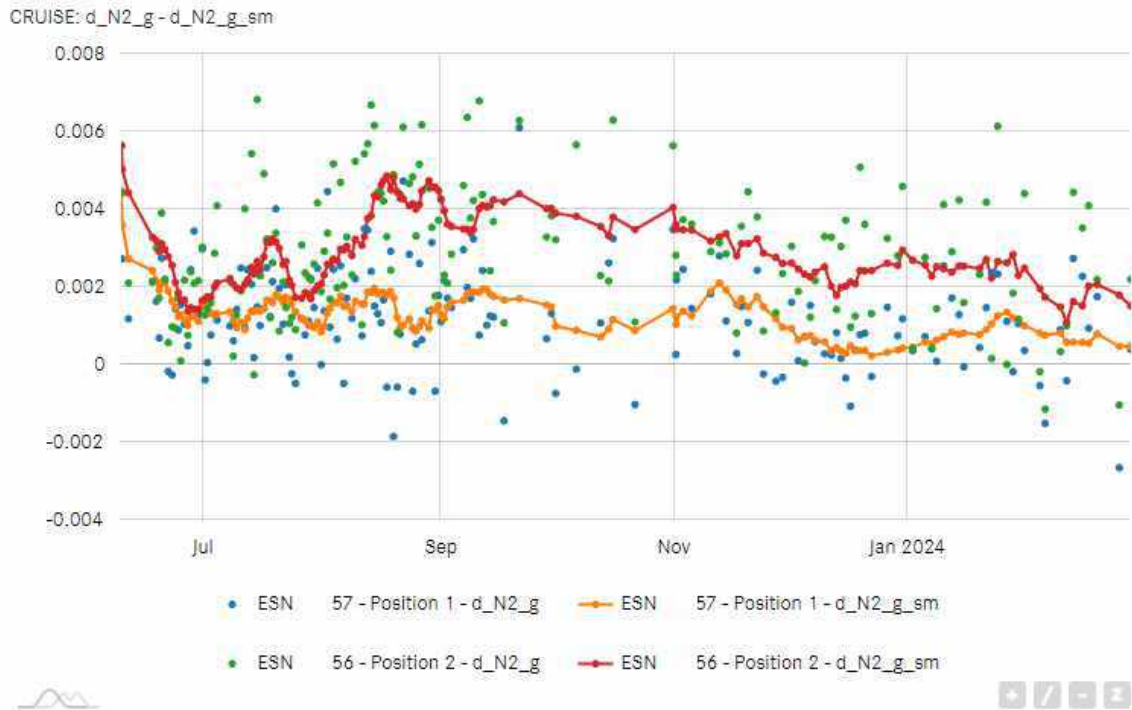
TAKEOFF: EGTMar - EGTM\_sm



### Delta Core speed



### Long term trend



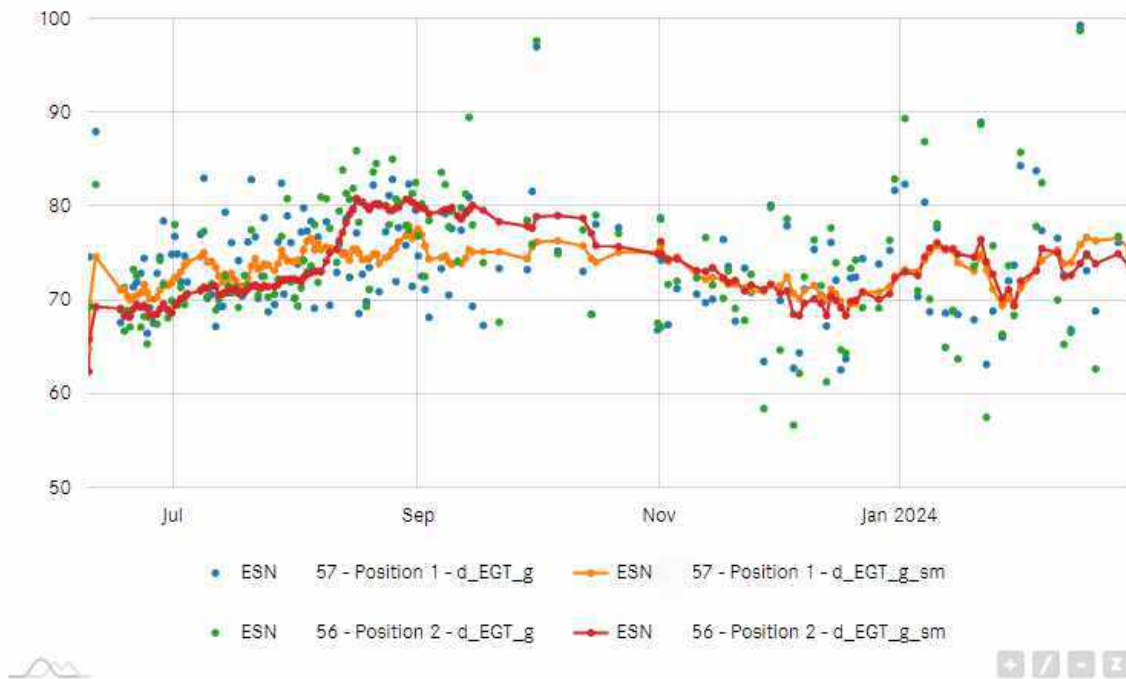
### Delta EGT

CRUISE: d\_EGT\_g - d\_EGT\_g\_sm



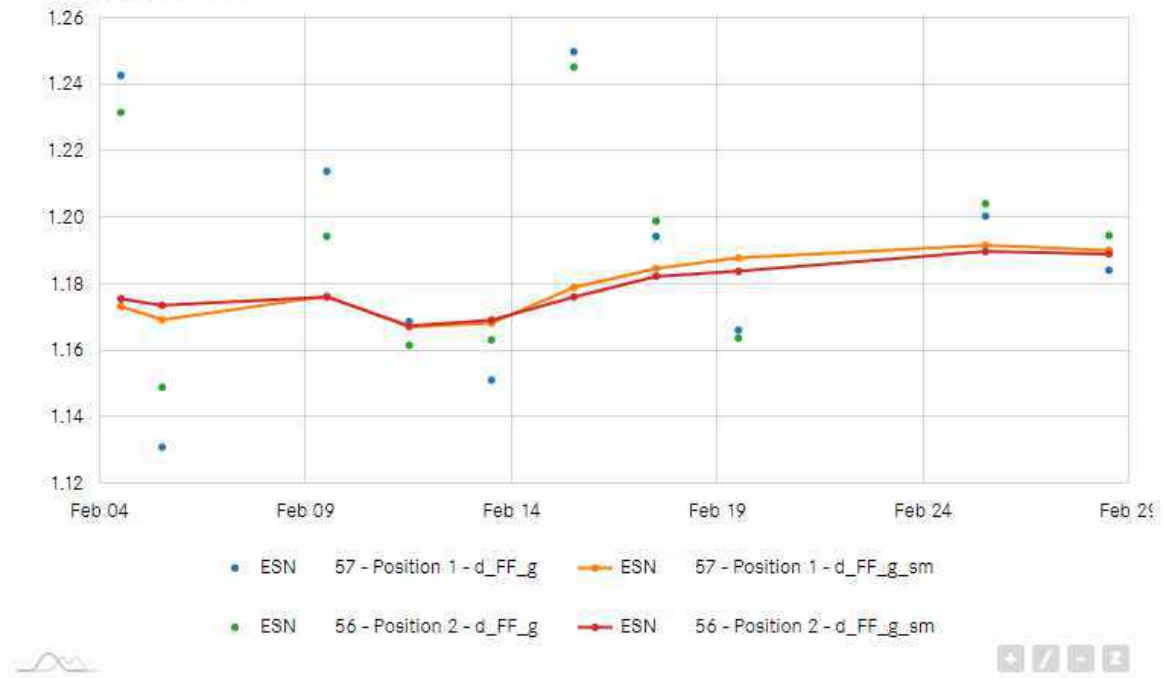
### Long term trend

CRUISE: d\_EGT\_g - d\_EGT\_g\_sm



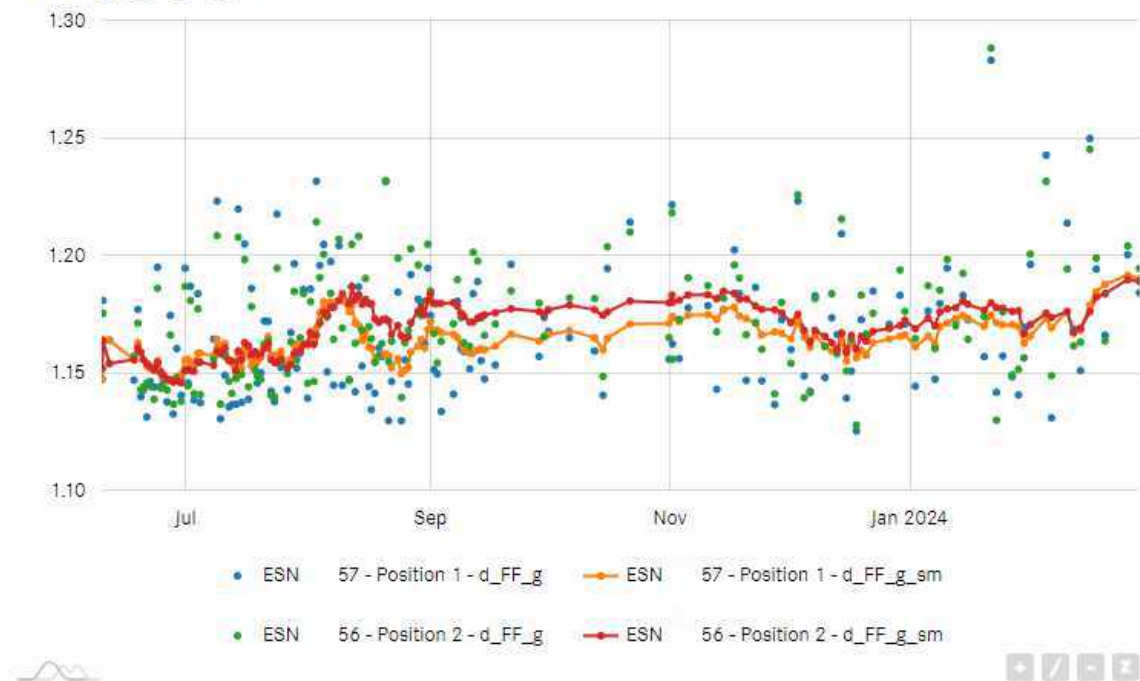
### Delta Fuel Flow

CRUISE: d\_FF\_g - d\_FF\_g\_sm



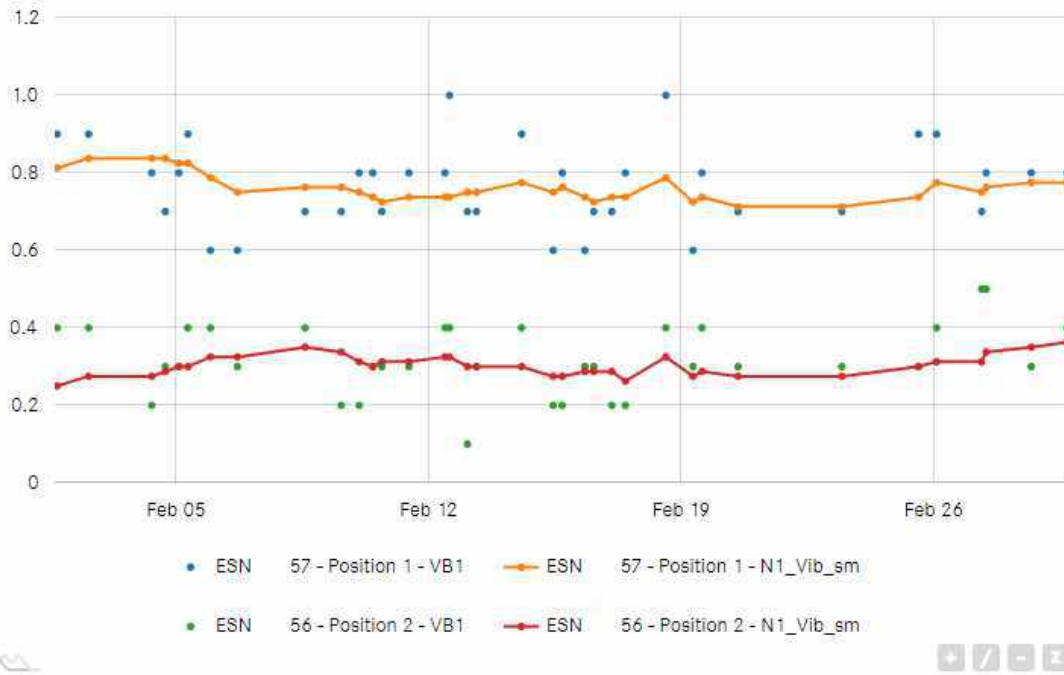
### Long term trend

CRUISE: d\_FF\_g - d\_FF\_g\_sm



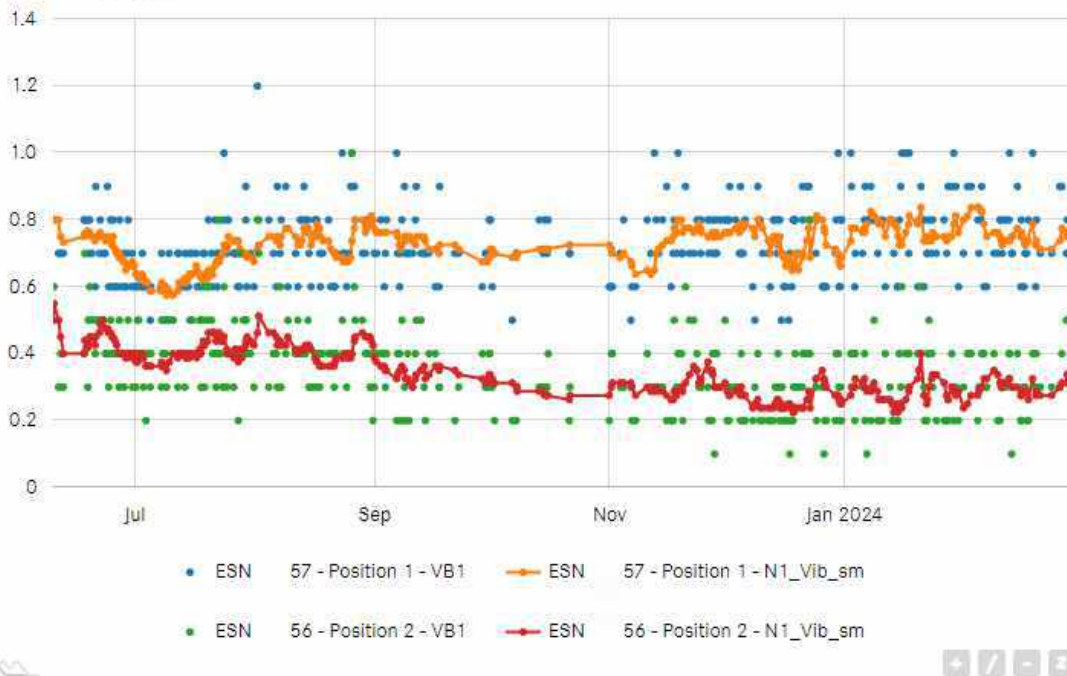
### Fan vibration

CRUISE: VB1 - N1\_Vib\_sm



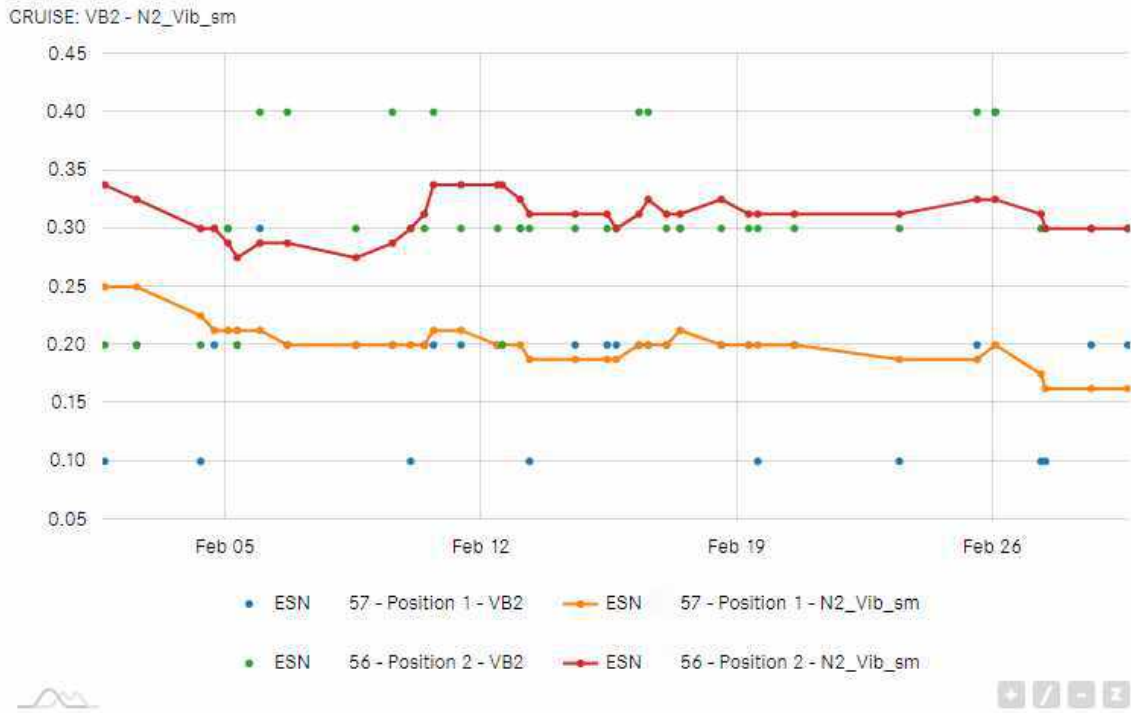
### Long term trend

CRUISE: VB1 - N1\_Vib\_sm

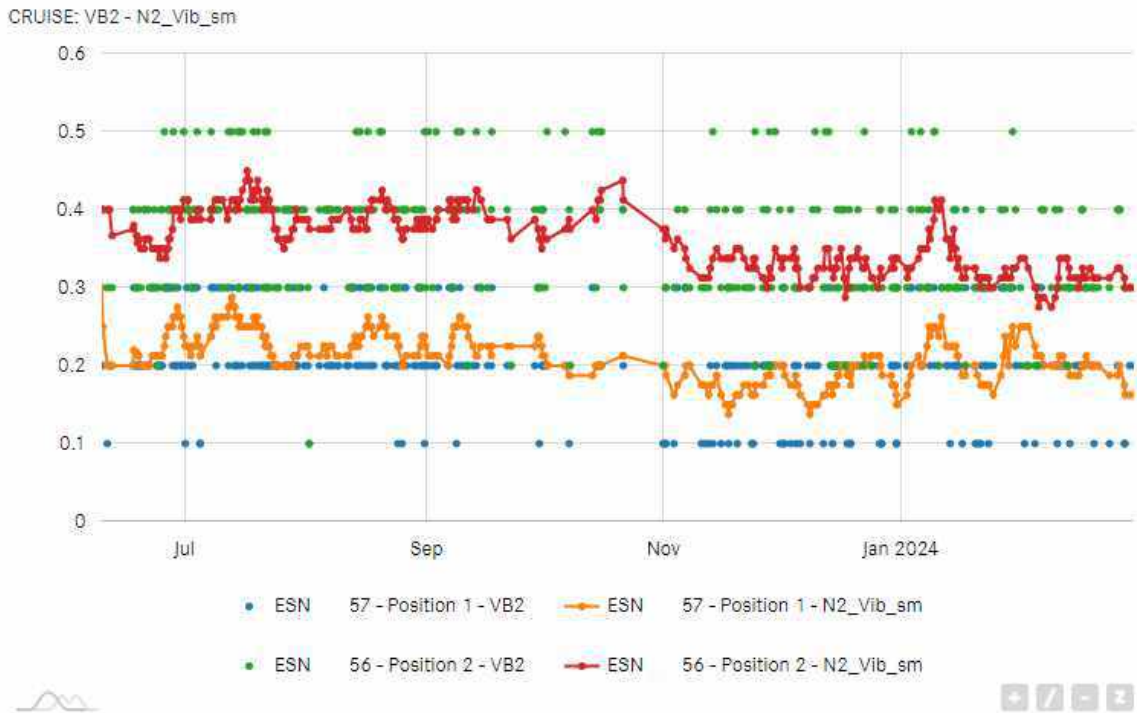




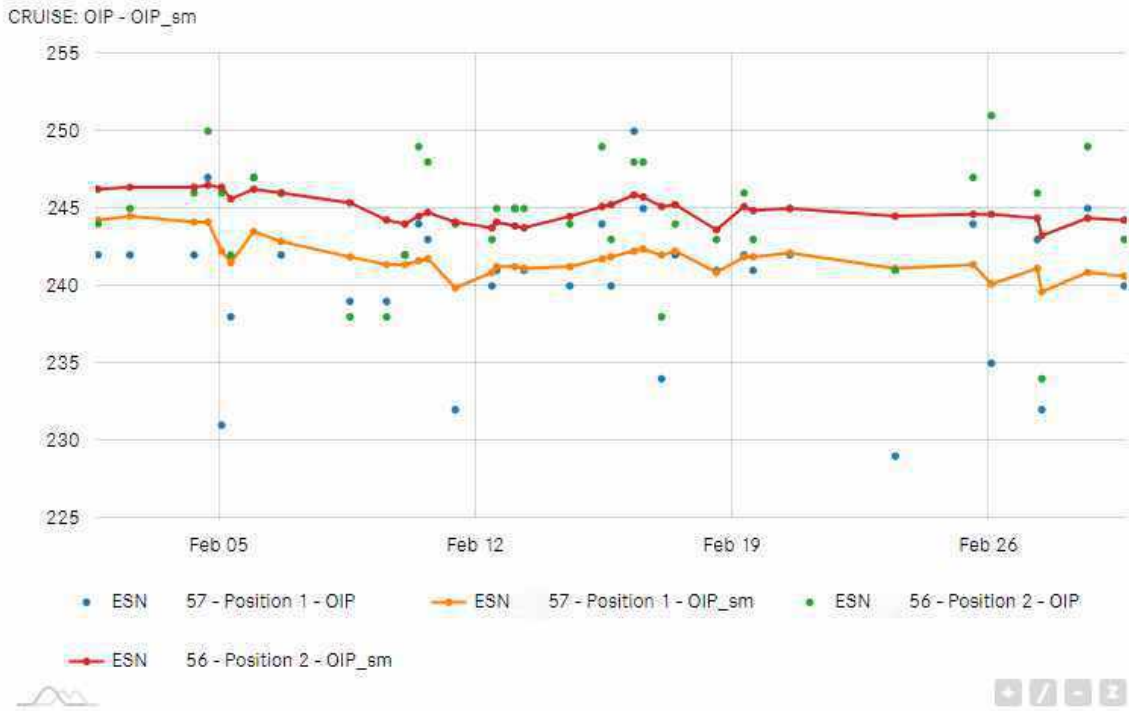
### Core vibration



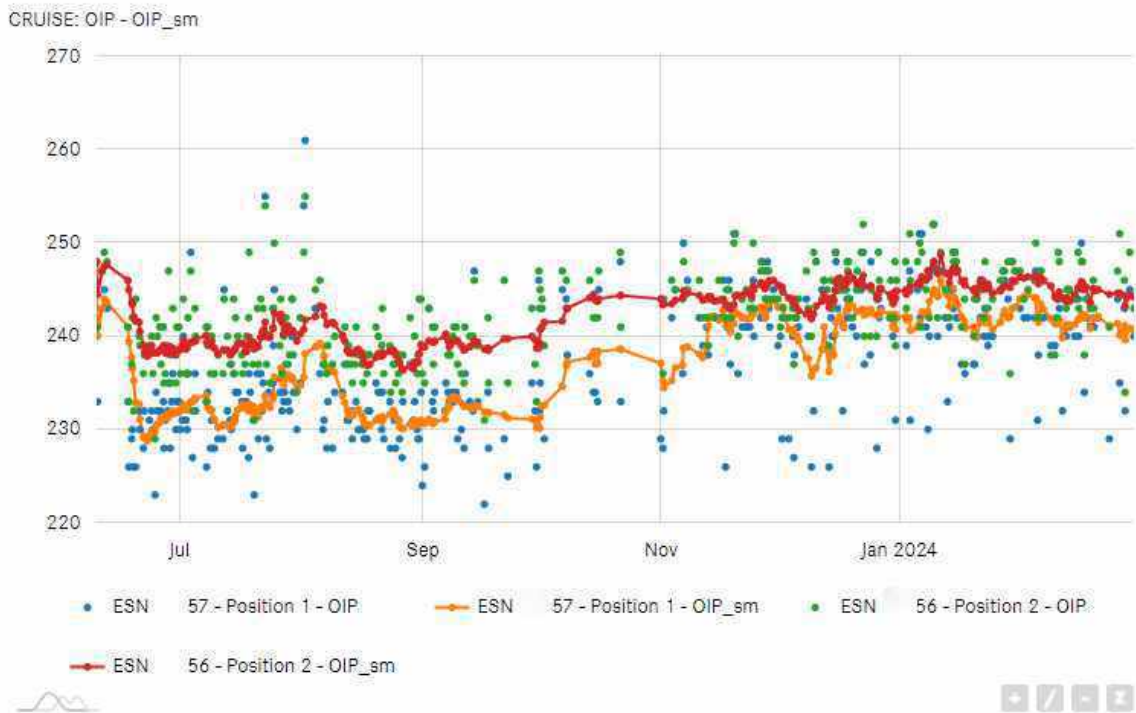
### Long term trend



### Oil Pressure

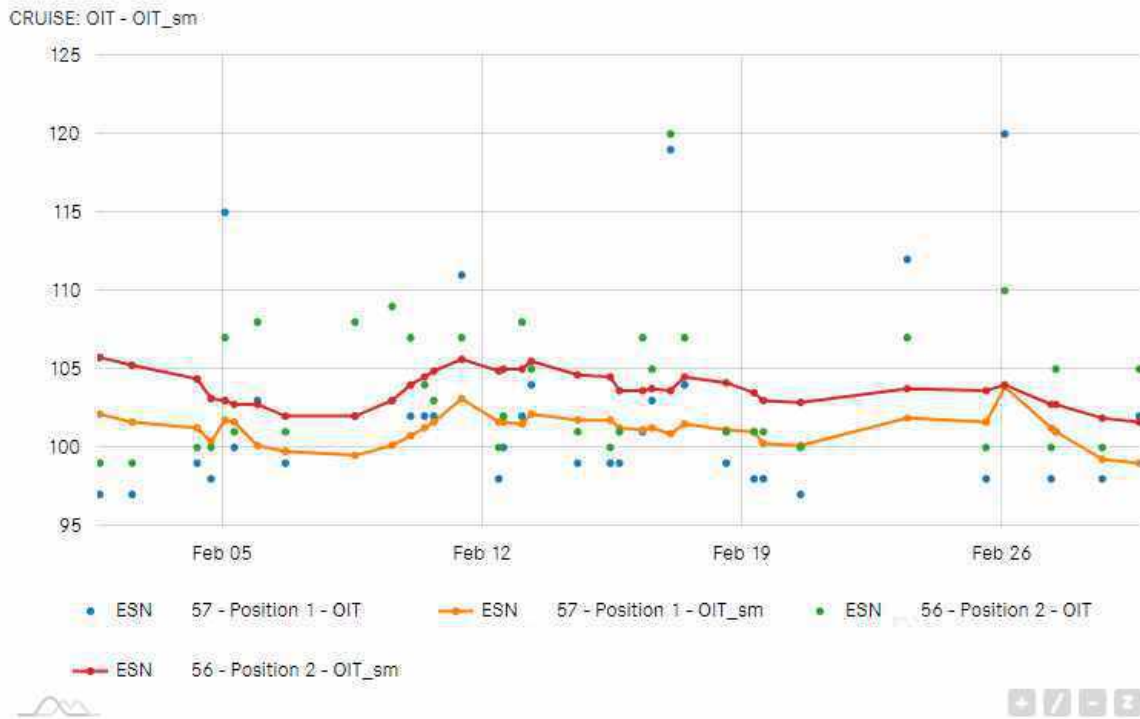


### Long term trend

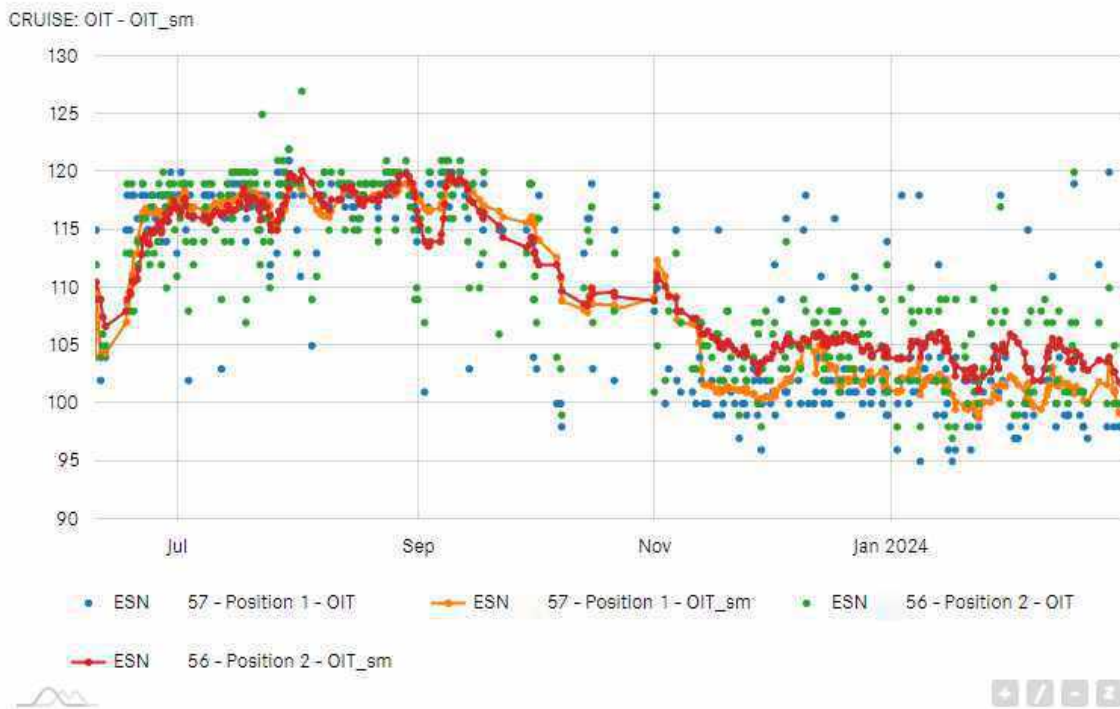




### Oil Temperature

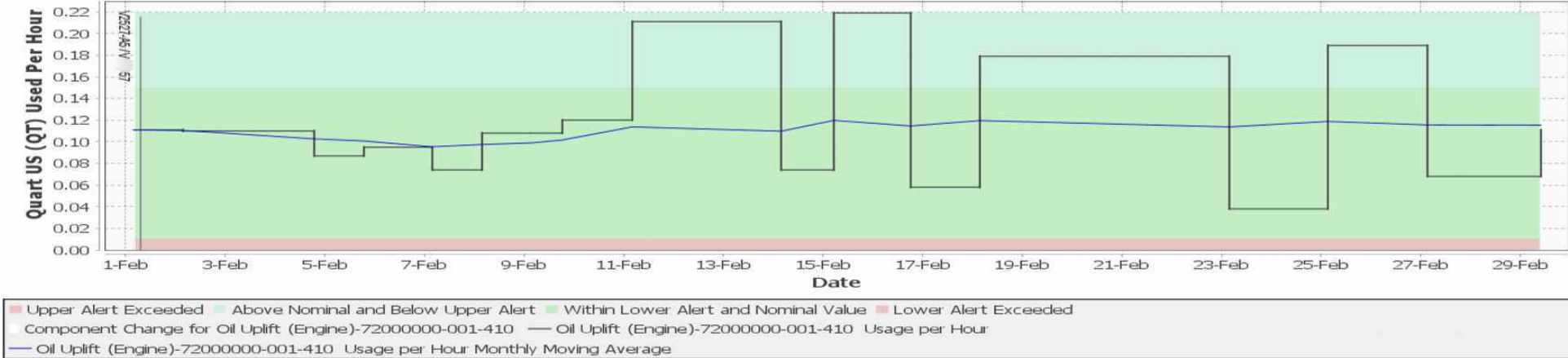


### Long term trend



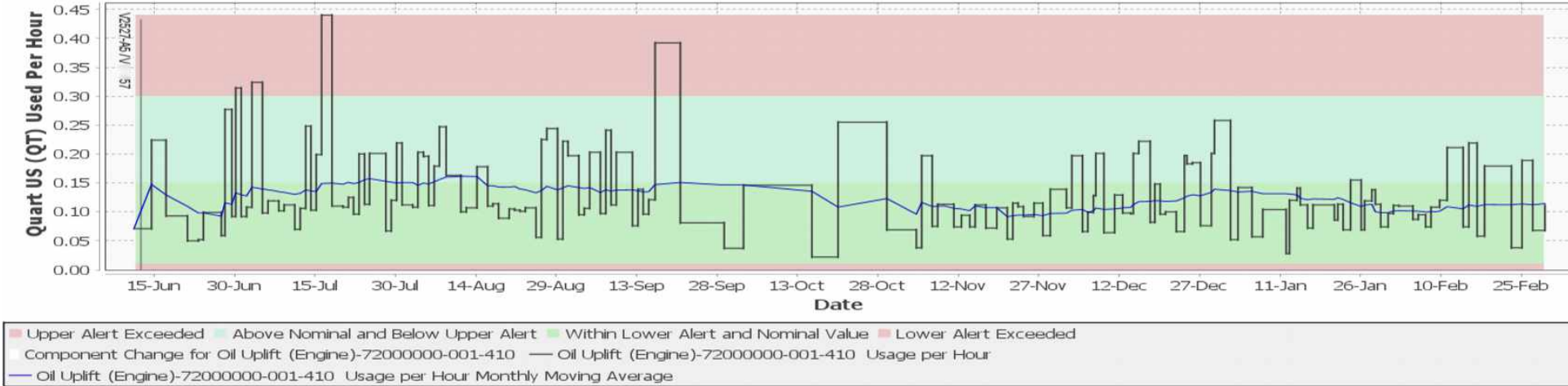
### Oil Consumption ENG1

Analysis For Oil Uplift (Engine) for ENGINE - ASSY V2500 at Pos 001,Zone 410



### Long term trend

Analysis For Oil Uplift (Engine) for ENGINE - ASSY V2500 at Pos 001,Zone 410



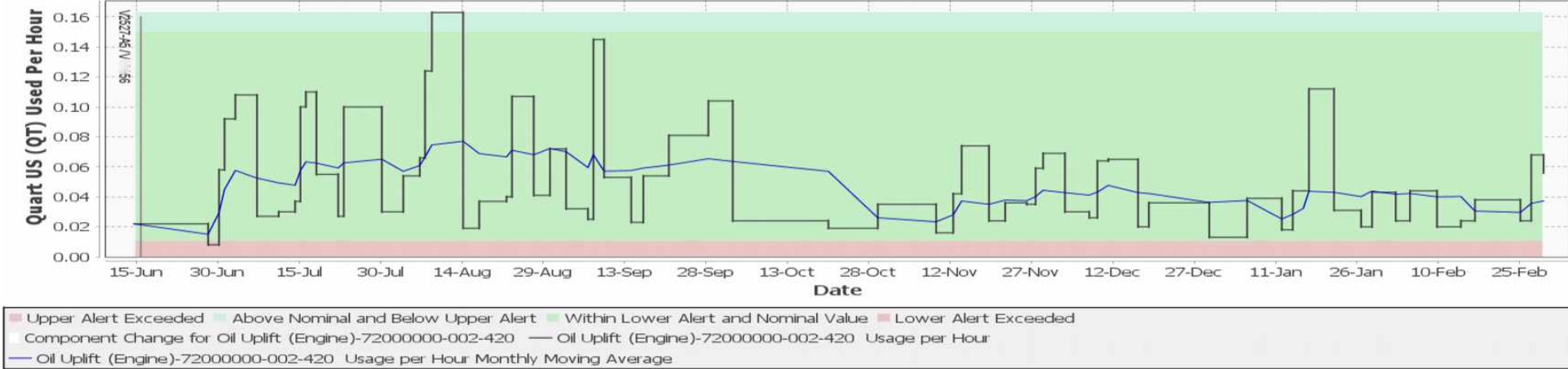
### Oil Consumption ENG2

Analysis For Oil Uplift (Engine) for ENGINE - ASSY V2500 at Pos 002,Zone 420



### Long term trend

Analysis For Oil Uplift (Engine) for ENGINE - ASSY V2500 at Pos 002,Zone 420



**Parameter Development**

A/C	#1 ESN	EGT M	Oil, PSI	Vibrations	Date	Comments / Failure / Recommendations / Actions performed
	V12857	58°	243	<1	31.01.24	None
		56°	241	<1	29.02.24	None

A/C	#2 ESN	EGT M	Oil, PSI	Vibrations	Date	Comments / Failure / Recommendations / Actions performed
	V12856	58°	246	<1	31.01.24	None
		58°	244	<1	29.02.24	None

**General comments and recommendations:**

- ✓ All trends stay within acceptable operational limits.
- ✓ Gas path cleaning was performed on 30OCT2023 for both engines. Improvement could be observed for EGT Margin.