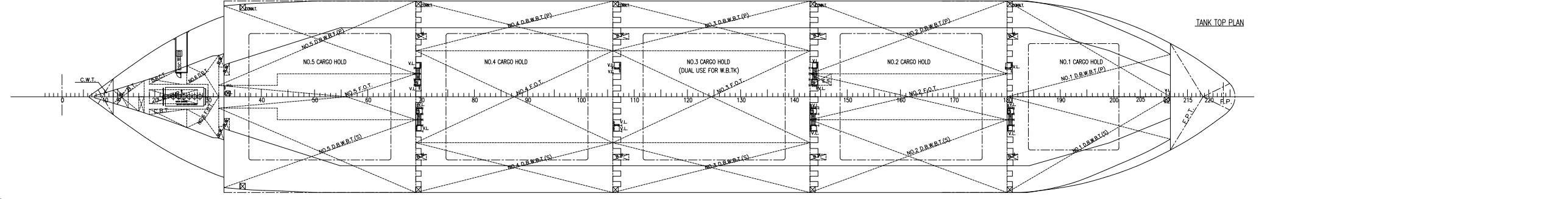
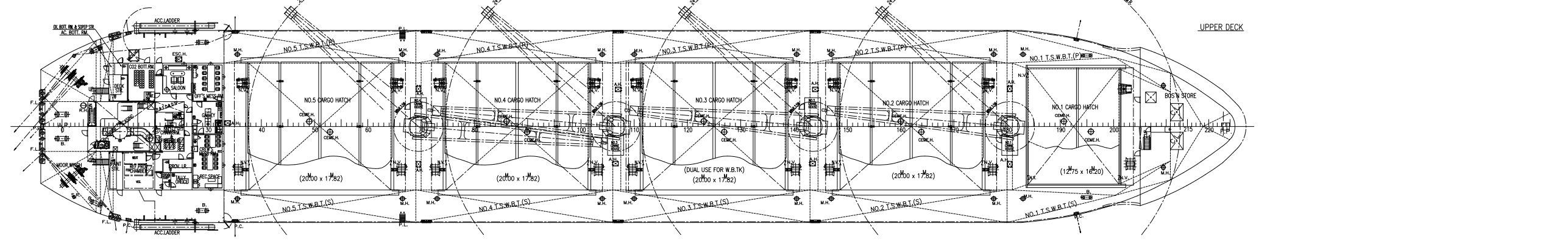
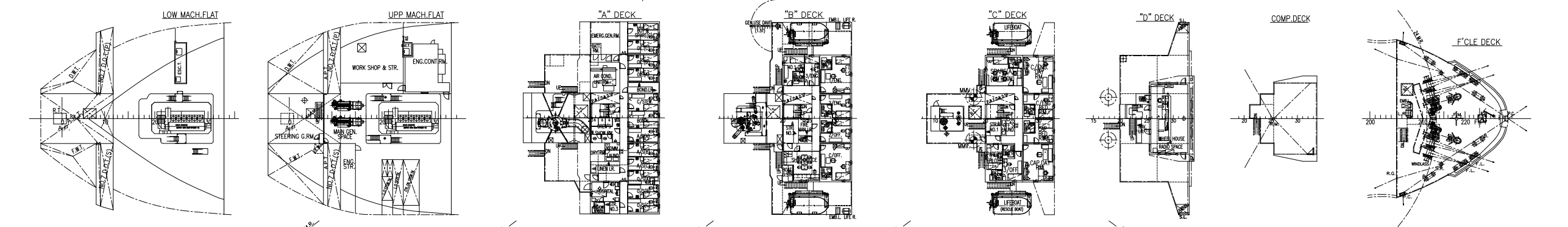
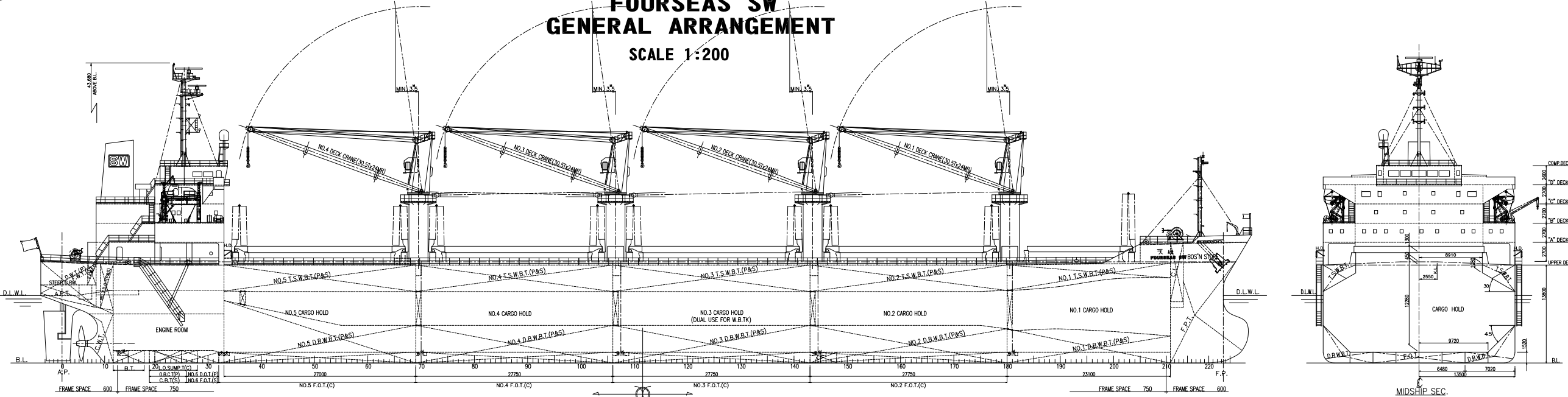


**FOURSEAS SW
 GENERAL ARRANGEMENT
 SCALE 1:200**



1. PRINCIPAL DIMENSION		2. SPEED	
LENGTH (O.A.)	abl. 170.70 m	PIII. LOAD CONDITION AT C.S.R. WITH 15% S.M.	
LENGTH (P.P.)	163.50 m	AT DESIGN DRAFT	abl. 14.25 knots
BREADTH (M.B.)	27.50 m	SEA TRAIL (MAN)	18.22 knots
DEPTH (M.B.)	13.80 m		
DESIGNED DRAFT (M.B.)	9.50 m	6. COMPLIMENT	
SUMMER DRAFT (M.B.)	9.70 m	CAPTAIN	1 CH/ENG. 1
		CH/OPP.	1 1/ENG. 1
		2/OPP.	1 2/ENG. 1
		3/OPP.	1 3/ENG. 1
		OFFICERS TOTAL	RP
2. TONNAGE CLASS			
C.S.R. TONNAGE	17,968		
CLASS. NO. (S.-A) (S.S.P.) (M.S.P.)			
Strengthened for heavy cargoes loading where			
ball No. 284 may be empty		BOSUN	1 NO. OIL 1 C/STEER 1
		A/S	3 OIL 3 RY 1
		O/S	3
3. DRAUGHT	29,747 tonnes	CREW TOTAL	13P
4. MAIN ENGINE		SPARE S/OFF. 1, 3/OFF. (PILOT) 1	
TYPE & NO.	MAN B&W 6S40C x 1 SET	RATING	1
C.S.R. 6,150kW(8,370PS) x 136 rpm		OTHER TOTAL	3P
C.S.R. 5,290kW(7,100PS) x 128 rpm		GRAND TOTAL	24P
(85% M.C.R.)			

This drawing/specification/document is the property of Shikoku Dockyard Co., Ltd. Without our permission in writing, it may not be shown, lent, copied or sold to any other party, or be used in any other way for purpose not specified by mutual agreement.

FINAL DRAWING

**IMO No. 9397262
 FOURSEA SW**

DESIGN DEPARTMENT	I#058	I#058	D.W.29,000 MT TYPE
APPROVED	S1058	GOO	BULK CARRIER
DESIGN GROUP			GENERAL ARRANGEMENT
APPROVED			
CHECKED			
DRAWN			
DATE	JUN. 8. 2009	SCALE	DRAWING NO.
		1/200	G 0003

SHIKOKU DOCKYARD CO. LTD.