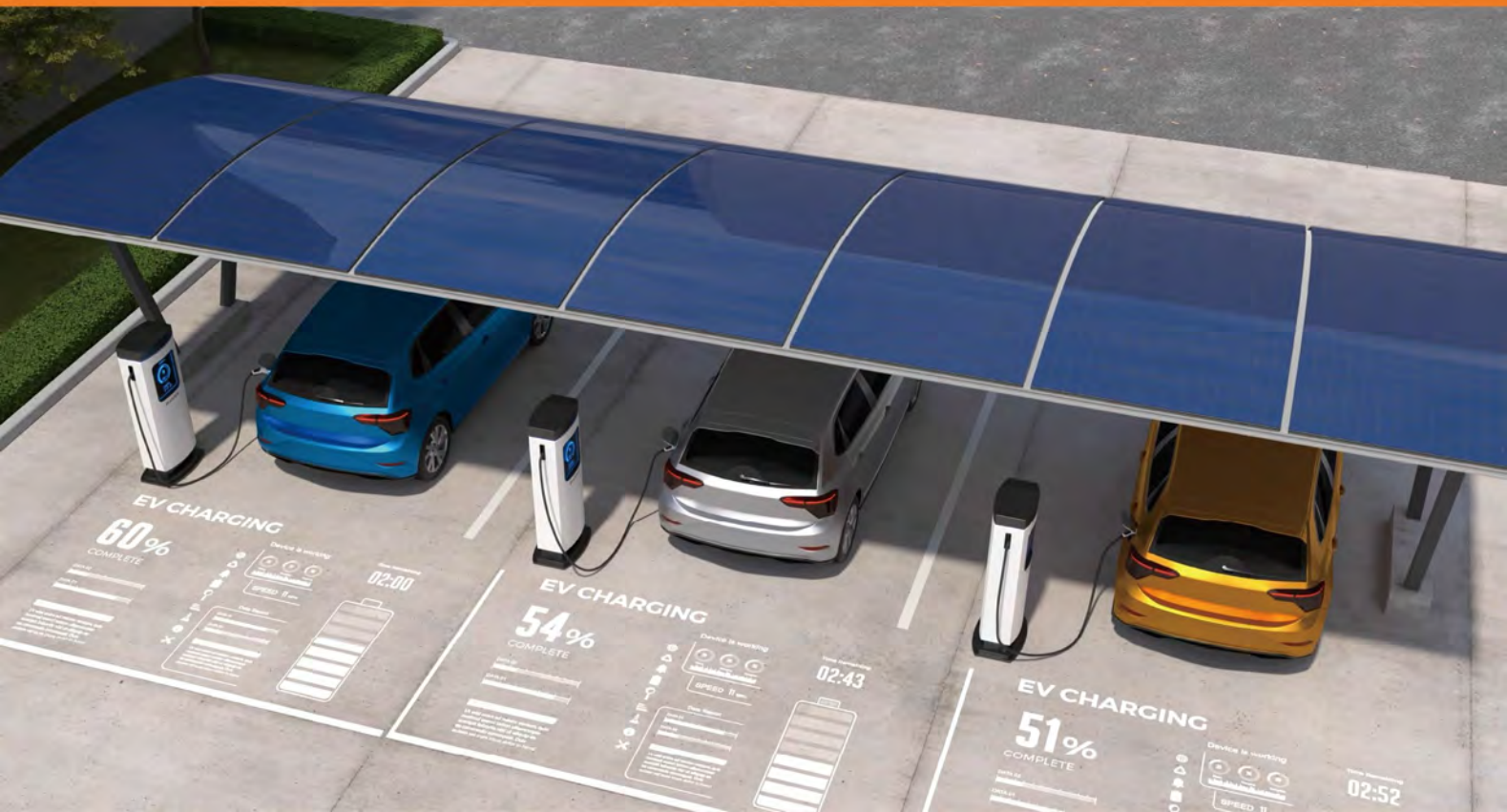


2024

# INTELLIGENT EV CHARGING

PLUG AND PLAY





The World's First Patented Product  
Integration Charging Control Module

Brand-New Control Module Design  
Faster Charging, Plug and Play

**It perfectly solve six problems on the traditional charger**

Production, Installation, Management, Maintenance, Usage and Profit Issues.



**Master the maintenance skill in 5 minutes**

It perfectly solve six problems on the traditional charger: Production, Installation, Management, Maintenance, Usage and Profit Issues.



**Integrated Module**

Plug-Pull Integrated Control Module, Fast installation and maintenance.



**Economical**

Ordinary Staff is enough, No need for professionals anymore, and costs are



**Simplification**

Simple inner structure, easier maintenance, and safety.



**Scale Production**

The lead time is greatly shortened lower investment, and faster delivery.



**Stability**

integration design, more stable and high efficiency.



**Satisfaction**

Steady Operation, High guarantee, Improve user's satisfaction.



# Test Equipment



# Debug Equipment





# Test Equipment

Oscilloscope



High and low temperature test chamber



# Precision Test Equipment

Vibration monitoring instrument



Three-phase voltage regulator



Thermal imager infrared thermometer



Three-phase power analyzer



multi-route temperature measuring equipment



digi-bridge

Tachometers



Insulation Tester



power frequency voltage withstand tester



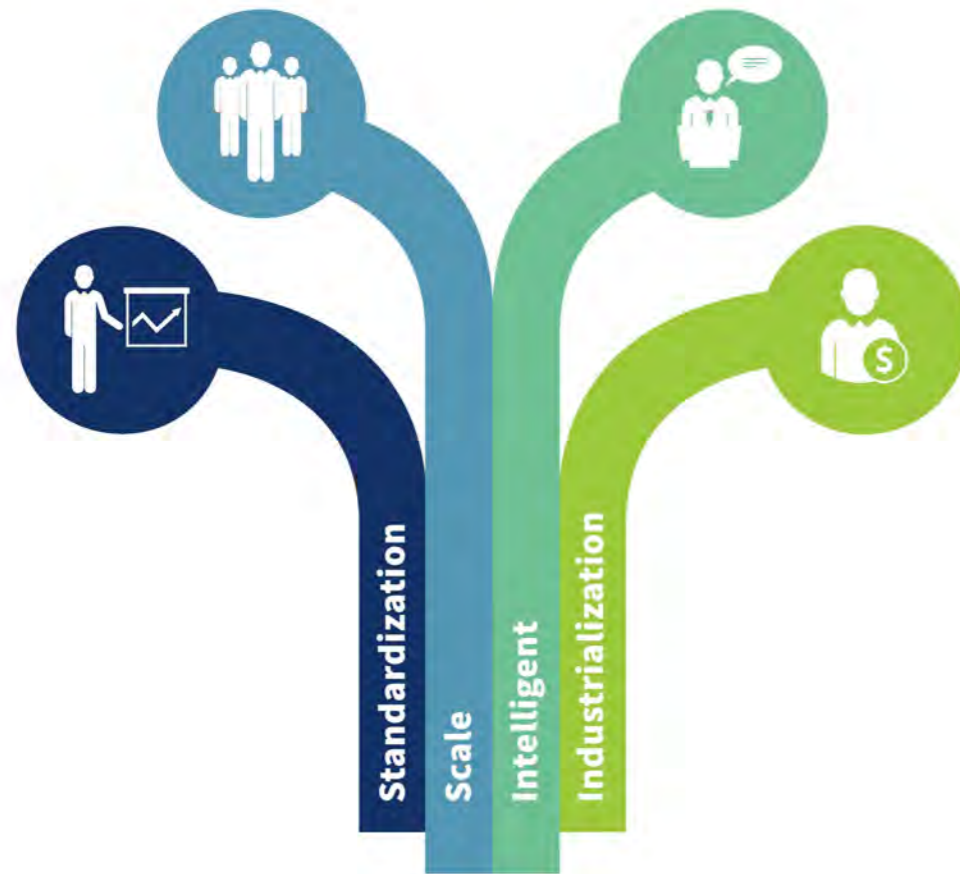
digital power supply





## Business philosophy

Intelligent Mission-Make Charging Easier



### Standardization

With R&D and innovation, we can realize standardized production and reduce the bottleneck of industrial development caused by insufficient standardization.



### Scale

By investing in large-scale production lines, we can improve production capacity, meet customers' efficient production needs and reduce costs.



### Intelligentize

Upgrading the intelligent production system, improving production efficiency, to reduce human error and ensure precision production.

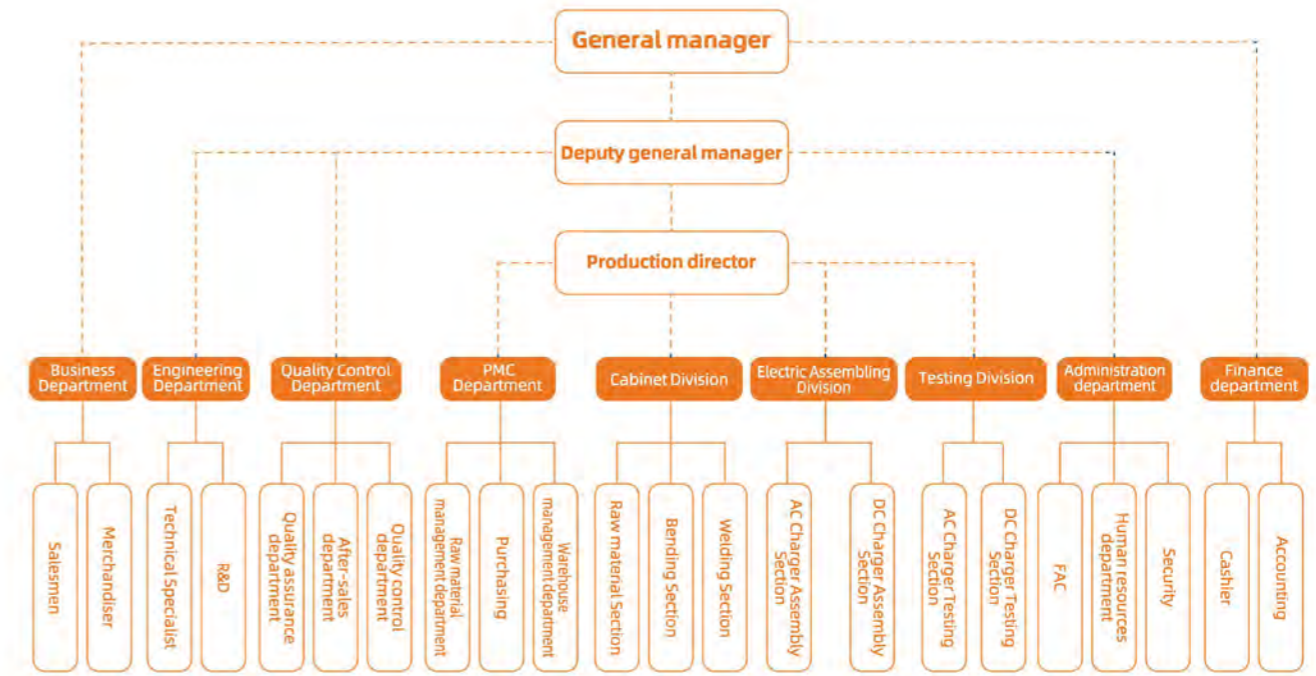


### Industrialization

To Create a more professional manufacturing platform, solve product problems such as R&D, production and maintenance in one stop, and promote the development of the industry.

## Management System

Comprehensive Quality Control Management



## Production process of charging pile



Material inspection



Circuit inspection



Electrical appliance assembly



Whole EV charger test



Wire Assembly



Inspection before delivery



# Full Scene, Full Category of Charging Piles Product System

Provide users with a variety of cost-effective EV chargers , which widely used in residential areas, shopping malls, office buildings, parking lots and other places, from private cars to public buses, from trucks to engineering vehicles and other types of vehicle charging, with elegant design, high protection, safe and reliable, intelligent and convenient, strong compatibility .All products have been insured, provide enough guarantee to users .







## FU Standard DC EV Charger

Model / Modelcode: 19-001 / Modelcode: 19-002  
 Modelcode: 19-003 / Modelcode: 19-004

- 1. Introduction
- 2. Features
- 3. Specifications
- 4. Dimensions
- 5. Installation
- 6. Operation
- 7. Maintenance
- 8. Troubleshooting
- 9. Safety
- 10. Appendix



## FU Standard DC EV Charger

Model / Modelcode	Modelcode	Modelcode	Modelcode
19-001	19-002	19-003	19-004
19-005	19-006	19-007	19-008
19-009	19-010	19-011	19-012
19-013	19-014	19-015	19-016
19-017	19-018	19-019	19-020
19-021	19-022	19-023	19-024
19-025	19-026	19-027	19-028
19-029	19-030	19-031	19-032
19-033	19-034	19-035	19-036
19-037	19-038	19-039	19-040
19-041	19-042	19-043	19-044
19-045	19-046	19-047	19-048
19-049	19-050	19-051	19-052
19-053	19-054	19-055	19-056
19-057	19-058	19-059	19-060
19-061	19-062	19-063	19-064
19-065	19-066	19-067	19-068
19-069	19-070	19-071	19-072
19-073	19-074	19-075	19-076
19-077	19-078	19-079	19-080
19-081	19-082	19-083	19-084
19-085	19-086	19-087	19-088
19-089	19-090	19-091	19-092
19-093	19-094	19-095	19-096
19-097	19-098	19-099	19-100





## EU Standard DC EV Charger

### Model : RHDC-YJG-EU



#### Integrated Charging Control Module Design

Easy installation and maintenance; Simple and efficient; safe and stable; general Ordinary Staff is enough; No need professionals anymore; shorten production lead time.



#### Independent air duct design

Independent air duct design, reduced the impact of dust on the charging module, greatly extend the lifespan of charging module.



#### Low Noise, High Protection

Ip65, Noise Decibels ≤ 65db.



#### Safe and Reliable

Ensured the EV charger lifespan more than 5 years.



#### Wide Application

Suitable for seaside area with high level of salt fog, mountains and mines with high level of dusty.



## EU Standard DC EV Charger

Parameter	Name	RHDC60K-YJG-EU	RHDC120K-YJG-EU
Input	Power Supply	3P+N+PE	3P+N+PE
	Input Voltage	380V/AC±15%	380V/AC±15%
	Input Frequency	50/60 Hz	50/60 Hz
	Input PF	≥0.98	
	Total Harmonics of Input Current	≤5% (50% ~ 100% loading)	
Output	Output Rated Power	60kW	120kW
	Output Rated Voltage	1000V/DC	
	Output Rated Current	60A	120A
	Voltage Range	150-1000V/DC	
	Constant Power Output Voltage Range	300-1000V/DC	
	Maximum Current of Each Gun	200A	
	Current Range of Each Gun	5-200A	
	Maximum Efficiency	≥95% (Full Loading)	
	Steady Current Accuracy	±1%	
	Steady Voltage Accuracy	±0.5%	
User Interface	LED Indicator	LED (Green、Yellow、Red)	
	LCD Display	7" Color Touch Screen	
	Start Mode	Plug&Play,RFID Card,APP	
	Cable Length	5m	
	Number of Gun	Double	
Communication	LAN	Yes	
	4G	Yes	
	OCPP	OCPP1.6J	
Protection	Short Circuit Protection	Yes	
	Over Load Protection	Yes	
	Over Temperature Protection	Yes	
	Leakage Protection	Yes	
	Over and Under Input Voltage Protection	Yes	
	Over and Under Output Voltage Protection	Yes	
	Output Over Current	Yes	
Environmental	Standard	IEC 61851-1:2017, IEC 61851-23:2014, EN 61851-24:2014, EN 61851-21-1:2018	
	Work Temperature	-20°C ~ +55°C	
	Storage Temperature	-40°C ~ +85°C	
	Work Humidity	≤95% Dew Free	
	Work Altitude	≤2000m	
	Work Condition	Indoor or Outdoor	
	Cooling Mode	Air Cooling (Independent Air Duct)	
Others	Noise	≤65dB	
	Ingress Protection	IP65	
	Electric Energy Measurement	1.0 level	
	Installation	Floor-stand	
	Product Dimension	1780*800*950 mm (H*W*D)	
	Net Weight	390kg	420kg
	Package	Wood Case	





## **Our Mission**

To Strive forward No Energy Waste

## **Our Vision**

To Be the World Widest Energy Storage Service Provider

## **Our Values**

Action, Innovation, To be the Best,  
Win-win