



**The asking price for the vessel including all survey equipment according specs
Offered at: € 995,000.00**

The motor catamaran was designed by Martin de Jager Yacht Design and built in Den Helder/The Netherlands in the year 2008.

The Vessel, was specifically designed as a submarine carrier with moon pool between the hulls, mainly for lifting/deploying and transporting the manned research submersible certified for (1000m depth, crew of 3)

The vessel has been used as a bathymetric survey vessel and support vessel for manned submersible missions for the past 12 years, as well as a platform for the necessary maintenance work on the sub.

The Vessel, is equipped with underwater navigation and communication systems for the underwater vehicle, side-scan equipment with magnetometer and a winch with 2,200m of cable, a ELAC Multibeam sonar system for 3,000m of depth for bathymetric surveys and a workshop with lathe, milling machine, welding equipment, stock of spare parts, etc.

General information:

Dimensions (m): 16.90 x 7.40 x 1.68

First time For sale from original & current first

owner

MMSI: 26394****

Portuguese ship register: 12*** 1PT

Construction year: 2008

Material: aluminum (Sealium 5383 H116)

Designer/Architect: Martin de Jager

Yard: Baan Yachtbouw Den Helder/ The Netherlands

Displacement:

Approx. 60 tons

Windows:

Aluminum portholes GEBO

Aluminum outside doors

Airdraft (approx.)

10,2m with mast

5,3m lowered mast

Color:

Blue bulwark, white superstructure

Certificates:

DNV/GL Hull 100 A5

CE Certification: A

Bathymetric survey equipment:

ELAC Multibeam Sonar Sea Beam 1050 & Hypack software

Coda Octopus F180 Motion Sensor

Klein 3000 Side Scan Sonar System with hydraulic winch and 2,200m cable

Marine Magnetism Magnetometer

Tracking/comms for diving vehicle: (Does not convey with sale)

USBL underwater tracking system LinkQuest 1500 HA with high power transponder

TN1510-AHR and Track link software

Underwater telephone (sub phone 10 KHz)

Compressors:

Bauer Oceanus air compressor 330bar (1 from 2014/200h, 1 from 2021/20h)

Lifting gear:

10-ton hydraulic crane for underwater vehicle (HOV, ROV, AUV)

Workshop including lathe, milling machine, tools, and spares/materials.

Technical information:

Engines:

2 x Vetus Deutz 170 Hp (125 kW), 6 cylinders, 2300 rpm

Type: BF 6M 2012 – DT66635D

Two x electric engine control system

Engine rooms well maintained

Running hours (approx.):

Port engine: 3100h

Starboard: 2600h

Fuel: diesel

Fuel tanks (aluminum)

Forward tanks: 2 x 2740 l

Aft tanks: 2 x 2640 l

Day tanks: 2 x 370 l

Hydraulic tank: 200 l with temperature and level gauge

Cooling system: 2 x intercooling, wet exhaust

Propulsion and steering:

2 x 5-blade propeller

-Water lubricated propeller shaft

Two x Propeller Nozzle (Poseidon)

Steering system: hydraulic

Two x Aqua drive B20 thrust bearings

Gearbox:

2 x ZF 63A-2,5 hydraulic Hurth-Marine
Reduction: 2, 52

Speed (approx.)

7.5 knots cruising speed at 1700 RPM (without sub)
7.0 knots cruising speed at 1700 RPM (with 8-ton sub) **{sub does not convey}**
9 knots top speed

Bow thruster: 2x 13 Kw hydraulic bow thruster MAX-Power Series 225HYD

Electric system:

12/24 VDC
230/400 VAC
400 Volt shore power connection

Batteries:

2 x 24V, 70 Ah starter battery port engine
2 x 24V, 70 Ah starter battery stb engine
1 x 12V/58Ah Ah starter battery generator I.
1 x 12V/58Ah Ah starter battery generator II.
1 x 24V, 400 Ah domestic batterie (2x2 12V/200Ah Mastervolt)

Battery charger:

Two x Victron MultiPlus combi inverter/charger 24/3000
Two x Victron VE.Bus Multi Control
Isolation transformer:
6 kW isolation transformer 400Volt WALCHER 6,3

50m shorecable 400V
Earth-leakage breaker: present

Generator I:

Paguro 8500 whisper set (main generator)
8,5 kVA 230 VAC @ 1500 RPM

Generator II:

Paguro 1800 whisper set (submersible battery charge and Bauer air compressor 330bar)
18 kVA 400 VAC @ 3500 RPM

Inverter:

Two x Victron MultiPlus combi inverter/charger 24/3000

Air conditioning:

One Portable

Fresh water tank (Aluminum)

2 x 1040 l

Water pressure system:

Electric water pump with pressure holding tank

Hot water system:

60 l boiler/water heater 230 Volt
Diesel water separator/filter (2 x SEPAR double unit):

Bilge pump:

Four x electric pump 24V

Two x submersible pump 230V

Gas system:

Present

Accommodation

Four cabins

Births :

Two forward: 2 x 1 pers

Two aft: 1 x 2 pers

Insulation:*Well insulated*

80mm PU foamed insulation in living, working, and storage space

80mm mineral wool in engine rooms (good sound insulation)

Good quality sound dampening wall plates in engine rooms

Bathroom:

2 x shower

Hot & cold running water

Wash basin with hot & cold running water

Toilet / Heads:

2 x flush toilet, 24V Johnson silent Aqua T

Washbasin with cold running water

Galley:

In wheelhouse, longitudinal

Cooker:

Gas, 3-burner hob
Stainless steel

Oven:

Syndrox electric oven, 230V

Microwave:

Sharp R-677D
Fridge / Refrigerator:
INDEL 130 l/24 Volt

Freezer:

Severin 45 l/230 Volt

Worktop:

14-17mm plywood with laminated surface (Formica type)

Wash basin:
Stainless steel sink

Water tap:

Hot & cold running water

Headroom:

Wheelhouse: 200cm
Workshop: 210cm
Work area: 210/285cm
Cabins: 185/202cm

Navigation equipment:

Furuno FCV-295 depth/echosounder with 50khz transducer
Simrad chart plotter/GPS CX44
Icom IC-M421 VHF with DSC
Icom IC-M330 VHF with DSC
Clipper Navtex
Simrad autopilot AP21
Simrad radar
Simrad windset IS20
One x compass analog: Ritchie
Two x compass digital: Robertson + KVH-Azimuth1000
Three x camera monitor system stern looking view
Icom GMDSS
Two x Icom portable VHF
Seven x window wiper EXALTO KK-HD
Navigation lights
Radar reflector
Mast: aluminum mast
Boom: aluminum, extendable for lifting use (test load: 1t at 90° port and stb)

Equipment:

Anchor equipment:
Electric anchor winch THOR HR4000 with remote control

One x Pool main anchor
One x stern anchor
70 m anchor chain
Bow roller
Boarding ladder: present
Two work (swimming) platforms with antislip
Sea rail:
Guardrail around
Guardrail around upper deck

Dinghy:

Aluminum RIB HIGHFIELD 310 (2018)
Yamaha outboard engine 15 Hp (2019)
Steering console with steering wheel and controls

Davits:

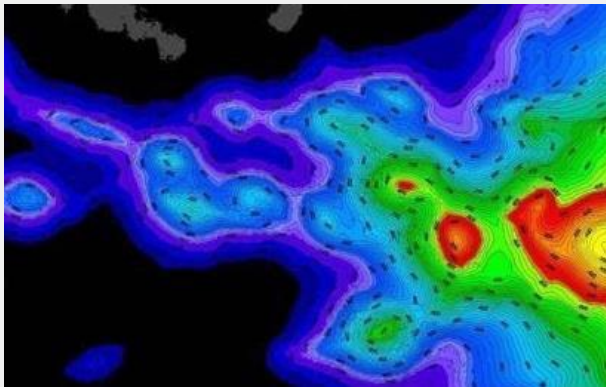
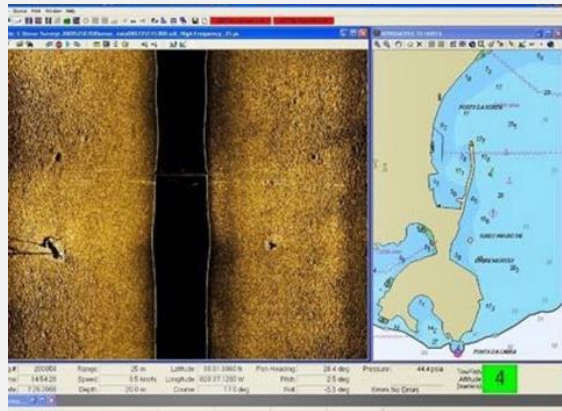
A-frame with electric winch (Superwinch C1000, 24V), remote control

Safety:

Two x automatic fire extinguishing system engine rooms
Six fire extinguishers
Four life buoys
Flares
10-pax liferaft (2020) with certificate
Life jackets

Additional information:

Deck shower
Deck lights
Gangway port and stb



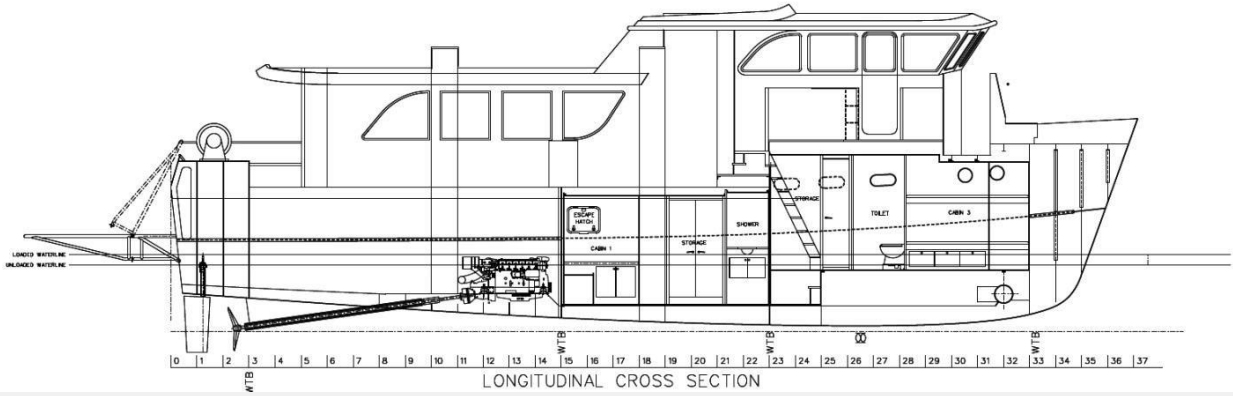


Below Sub does Not Covey with Sale...
Broker is not aware the sub is still with the owner.
The sub was custom built by owner.
Owner holds all construction drawings.

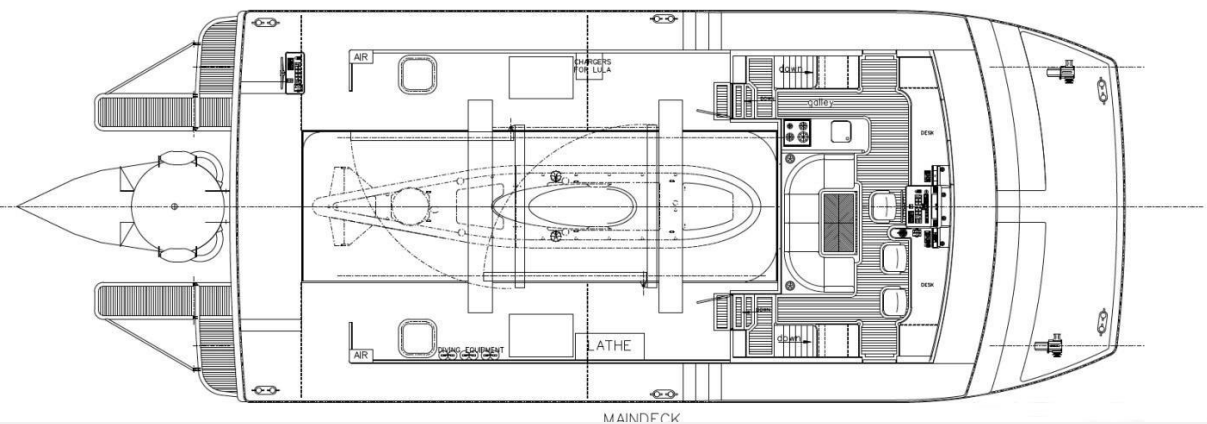


0 1 2 3 4 5 6 7 8 9 10 11 12 13 14 15 16 17 18 19 20 21 22 23 24 25 26 27 28 29 30 31 32 33 34 35 36 37

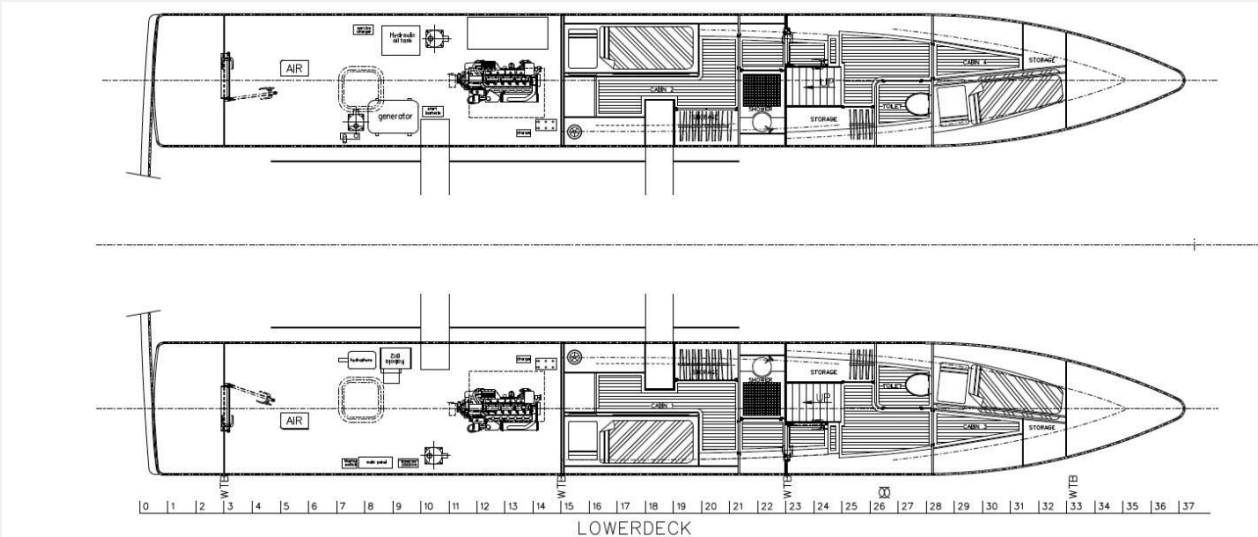
PROFILE VIEW



LONGITUDINAL CROSS SECTION



MAINDECK



LOWERDECK

