



# EVERYTHING under THE SUN

Trading Internationally since 1980



### 1. WIND PRESSURE CAN REACH 9

The outer doors and windows are not damaged under the action of wind pressure when they are normally closed. The high strength columns, beams, walls and other load-bearing constructions further resist the impact of wind pressure and vibration.

### 2. ANTI-CORROSION AND ANTI-INSECT

The external aluminum alloy material has great corrosion resistance. The material has been specially treated, with good airtightness, mosquito, insect and termite proof, and the service life is up to 50 years.

### 3. FIRE AND WATERPROOF

The wall is made of waterproof coil and waterproof material, and the watertight performance can reach level 6 strong wind and rainstorm. The wall is made of high flame retardant sheet to increase the ability of fire and waterproof.

### 4. THERMAL INSULATION UP TO 8 LEVELS

Warm in winter, cool in summer, comfortable and energy saving, using a variety of materials of the combination wall, forming a thermal insulation structure system, to solve the dual problem of thermal insulation and heat insulation.

### 5. SOUND INSULATION PERFORMANCE CAN REACH 45 DB

The double glazing and sound insulation materials are used to meet the national standard "Green Building Evaluation Standard" GB50378, aiming to provide a quiet indoor living environment for residents.

### 6. ANTI-THEFT AND ANTI-FREEZE

Air tightness up to class B, steel frame, high-strength aluminum hull, reinforced door lock security, guarantee privacy while enjoying the natural beauty of the outside.

# STRUCTURAL ANALYSIS

Smart theme control light strip

Small living room warm design

Intelligent security code lock

270 degree view bedroom

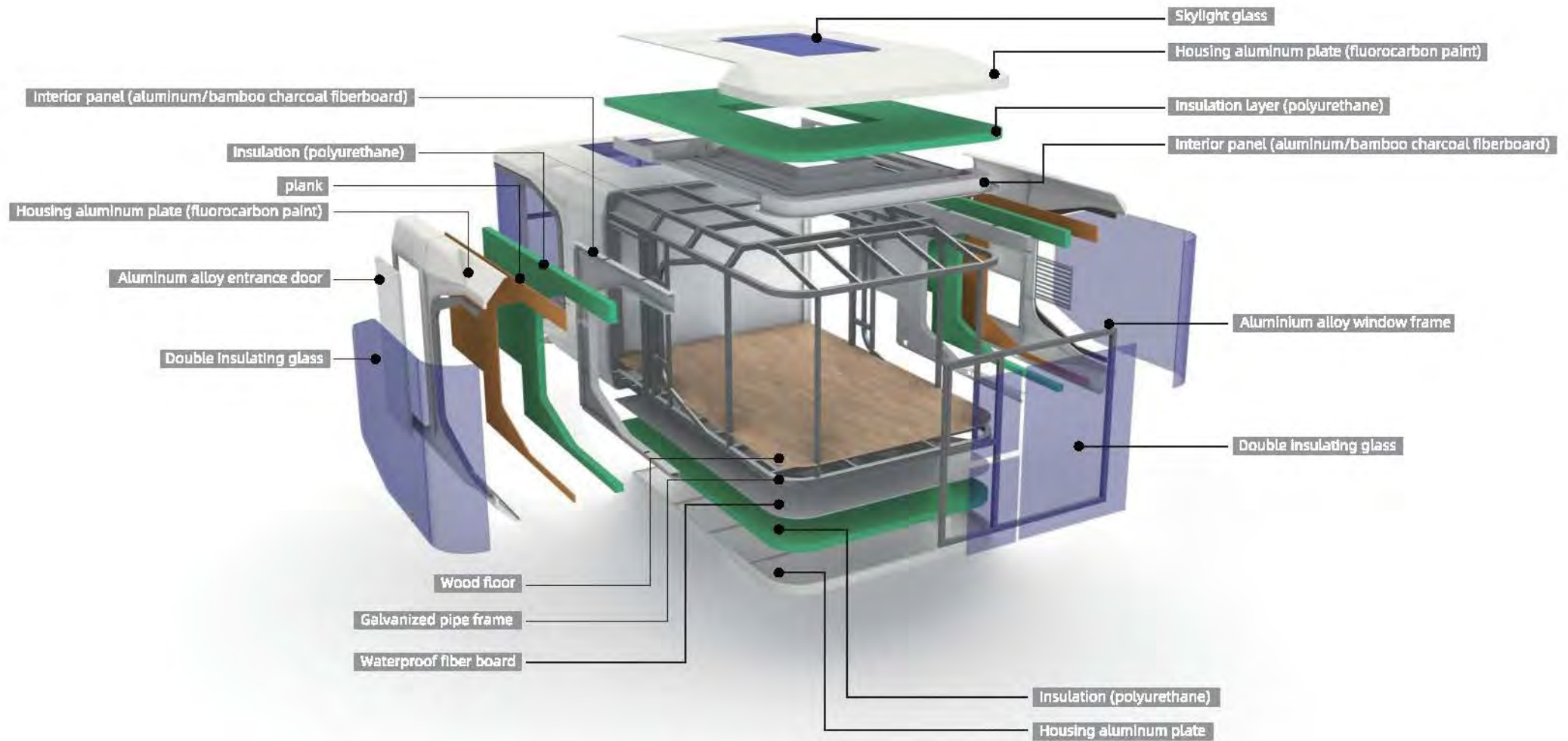
High-tech explosion-proof glass

Smart viewing skylight

Sloping roof

360 degree double view balcony

# PRODUCT INTRODUCTION



INTERNAL STRUCTURE ANALYSIS DIAGRAM

# AI INTELLIGENCE SYSTEM

CABIN



3

2

6

13

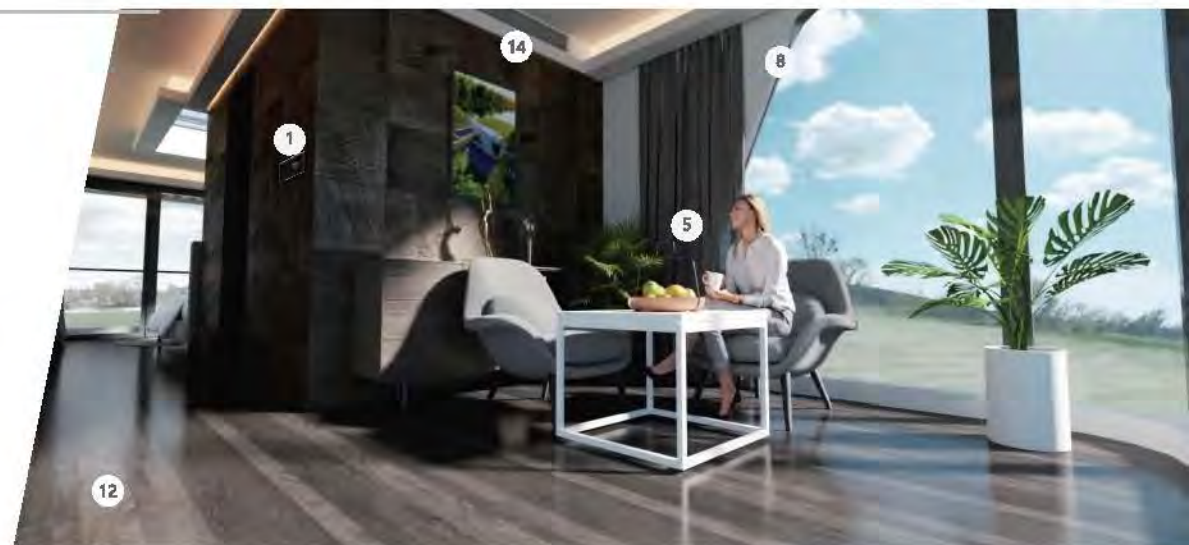
11

9

7

## STANDARD FUNCTION

- |                             |                              |
|-----------------------------|------------------------------|
| 1 Intelligent control panel | 6 Air conditioner            |
| 2 Integrated sound system   | 7 Ground floodlight belt     |
| 3 Ceiling light belt        | 8 window frame lighting belt |
| 4 Ambiance light belt       | 9 Automatic curtain          |
| 5 Simple bar                | 10 Fresh air                 |



## OPTIONAL FUNCTION

- |                                      |                                |
|--------------------------------------|--------------------------------|
| 11 Panoramic electric atomized glass | 12 Electric floor heating      |
| 13 Skylight (with curtain)           | 14 Automatic projection screen |



# AI INTELLIGENCE SYSTEM

## CROSS-BORDER INTEGRATION

Provide the overall solution of Intelligent integrated equipment./



## REMOTE CONTROL

Whole-house smart home system,  
The mobile APP can be remotely controlled.

## INTELLIGENT UPGRADE

Traditional guest room hardware intelligent upgrade and intelligent AI customer service, Help hotels reduce costs and increase efficiency to improve guest experience.





### MULTIFACETED SYSTEM CONSTRUCTION

A system to solve hotel communication and enablement problems, Unified management background, convenient and fast

### PRECISION DATA COLLECTION

Regularly help the hotel intelligent collection of data, for the hotel to continue to optimize the way of operation and maintenance to provide data support. Background automatic calculation of total revenue, cost, gross profit, financial more worry.



**OTA ONLINE UPGRADE**  
CLOUD-BASED ONLINE PERFECT UPGRADE SYSTEM, REDUCING MAINTENANCE AND INSPECTION COSTS



# PRODUCT CATALOGUE



**STARSKY SERIES K30**

K30 : L : 5.85 M W : 3M H : 3.1M P:37



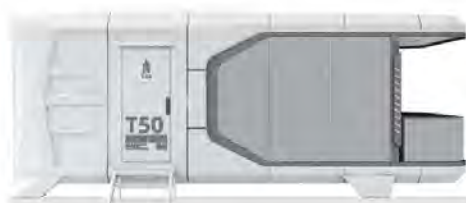
**STARSKY SERIES K50**

K50 : L : 8.5 M W : 3.3M H : 3.3M P:39



**STARSKY SERIES K70**

K70 : L : 11.5 M W : 3.3M H : 3.3M 41



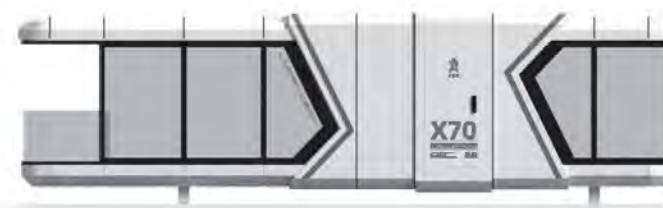
**STARSHIP SERIES T50**

T50 : L : 8.5 M W : 3.3M H : 3.3M P:43



**STARSHIP SERIES X50**

X50 : L : 11.5 M W : 3.3M H : 3.3M P:45



**STARSHIP SERIES X70**

X70 : L : 11.5 M W : 3.3M H : 3.3M P:47



## STARCLOUD SERIES C30

C30 : L : 6.6 M W : 3M H : 3.1M P:49



## CONSTELLATION M50

M50 : L : 8 M W : 3.3M H : 3.2M P:51



## STARBLUE SERIES M30

M30 : L : 6.3 M W : 3M H : 3.3M P:53



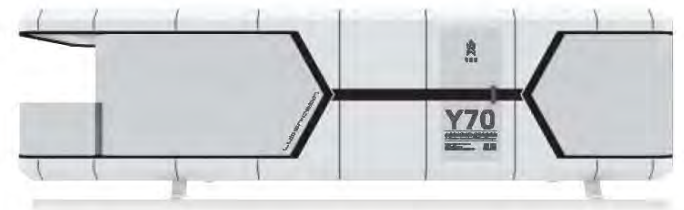
## STARCLOUD SERIES N50

N50 : L : 8.5 M W : 3.3M H : 3.3M P:55



## STARMAP SERIES Y50

Y50 : L : 8.5 M W : 3.3M H : 3.3M



## STARMAP SERIES Y70

Y70 : L : 11.5 M W : 3.3M H : 3.3M

**PRODUCT  
CATALOGUE**



**CONSTELLATION Z30**

Z30 : L : 7 M W : 3M H : 3.3M



**STARLIGHT SERIES E50**

E50 : L : 5.8 M W : 2.15M H : 2.5M P:58



**STARLIGHT SERIES E30**

E30 : L : 3.85M W : 2.15M H : 2.5M P:57



**STARLIGHT SERIES E70**

E70 : L : 11.5 M W : 2.15M H : 2.5M P:59



**STARLIGHT SERIES D50**

E50 : L : 5.8 M W : 2.15M H : 2.5M P:60



**STARCIRCLE SERIES U30**

U30 : L : 3.6M W : 3.6M H : 2.7M P:61



**STARGALABY SERIES FH30**

FH30 : L : 6.5M W : 3.5M H : 3.3M P:63



**STARGALABY SERIES FH60**

FH60 : L : 8.5M W : 3.5M H : 3.3M P:64



**STARGALABY SERIES FH90**

FH90 : L : 11.5M W : 3.5M H : 3.3M P:65



**STARFIRE SERIES OT11**

OT11 : L : 12M W : 2.4M H : 3M P:67

**PRODUCT  
CATALOGUE**



**STARFIRE SERIES**

**OT40**

OT40 : L : 12M W : 2.4M H : 3M

P:70



**STARFIRE SERIES**

**OT50**

OT50 : L : 12M W : 2.4M H : 3M

P:70



**STARFIRE SERIEST**

**OT80**

OT80 : L : 12M W : 2.4M H : 3M

P:70



**STARFIRE SERIES**

**OT90**

OT90 : L : 12M W : 2.4M H : 3M

P:70



**STARFIRE SERIES OT10**

OT10 : L : 12M W : 2.4M H : 3M P:70



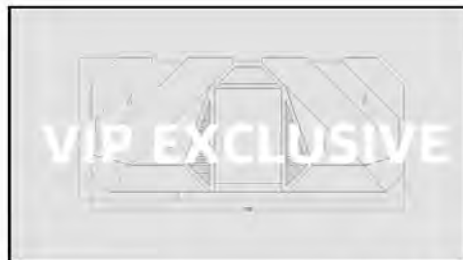
**STARFIRE SERIES OT30**

OT30 : L : 12M W : 2.4M H : 3M P:70

**Customized OEM**  
(Original Equipment Manufacturer)

- Color standard housing module
- Standard interior module
- Standard cabinet module
- Environment-friendly composite floor module

No one knows you like we do.



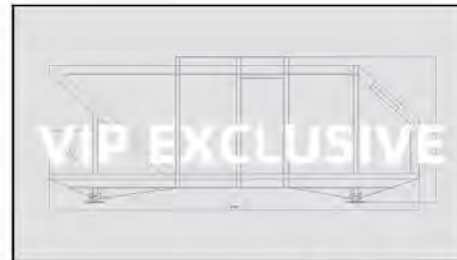
**STAR ORBIT Q50**

Q50 : L : 8.5 M W : 3.3M H : 3M



**STAR ORBIT Q70**

Q70 : L : 8.5 M W : 3.3M H : 3M



**STAR TRACK H50**

H50 : L : 8.5 M W : 3.3M H : 3M



**STAR TRACK H70**

H70 : L : 8.5 M W : 3.3M H : 3M

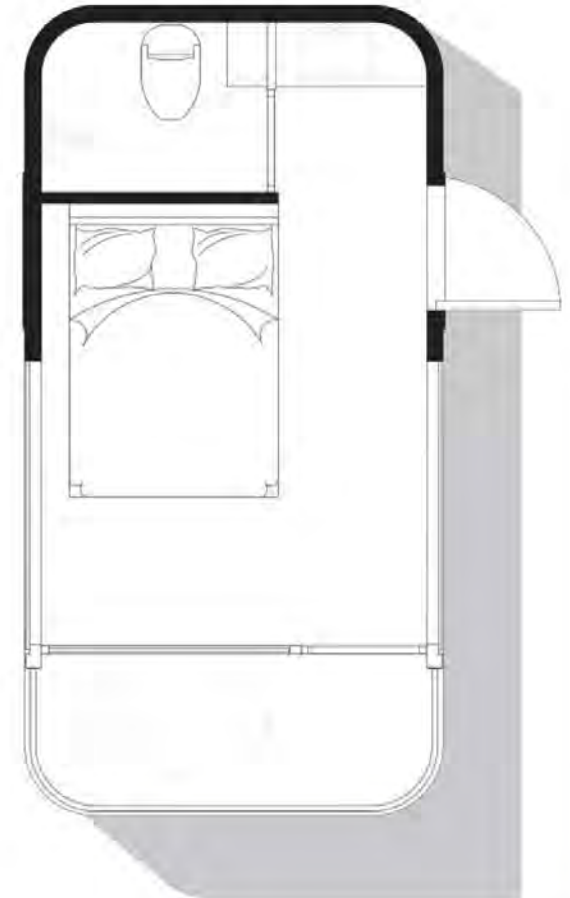
Domestic version



Export Version

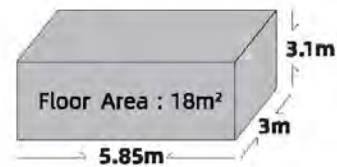


K30



PRODUCT  
SHOWCASE

K30



<b>MAIN STRUCTURE:</b>	Thickened steel frame, aluminum exterior panels, polyurethane insulation layer, panoramic wall curtain glass (6+12+6 insulating glass), aluminum doors and Windows, intelligent access control, foot support.
<b>INTERNAL STRUCTURE:</b>	Bamboo charcoal fiberboard wall, advanced waterproof composite wood floor, indoor and outdoor multi-color warm light, electric curtain, large skylight, the whole house intelligent control system, brand socket panel.
<b>SANITARY WARE:</b>	Glass side sliding door, smart toilet, water heater, shower, brand basin, brand faucet.
<b>MAIN EQUIPMENT:</b>	Gree central air conditioning, water heater, bath ba wind heating multi-in-one integrated bath ba.
<b>OPTIONAL:</b>	Electric floor heating, water pipe antifreeze, projector, fire smoke alarm, starry roof.

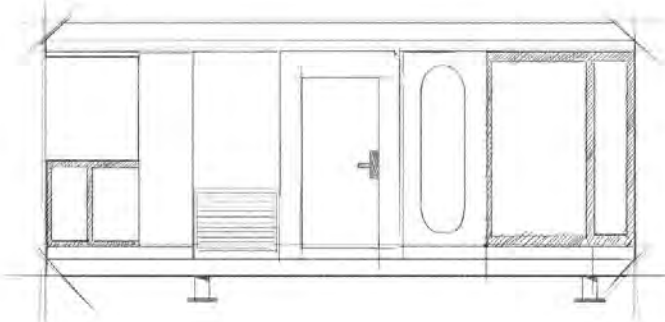
PRODUCT INTRODUCTION



K30



PRIMARY



FIRST GENERATION



SECOND GENERATION



NEW THIRD GENERATION

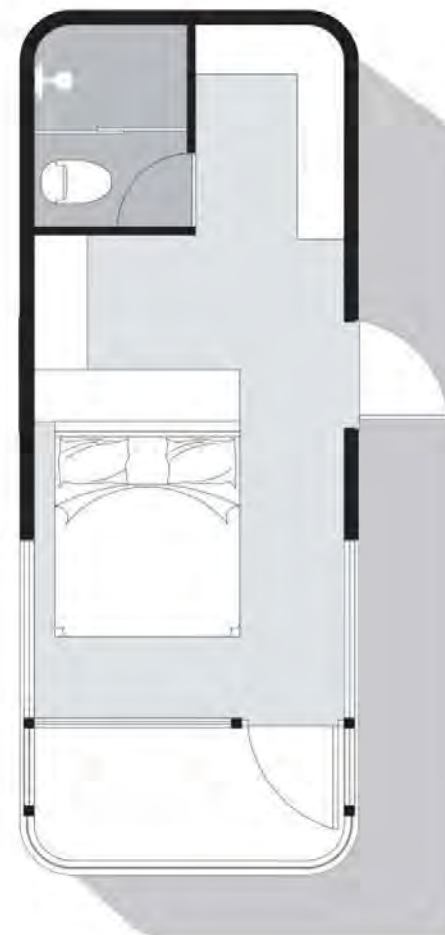


Domestic version

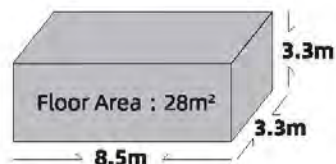


Export Version

K50



14 | PRODUCT SHOWCASE | K50

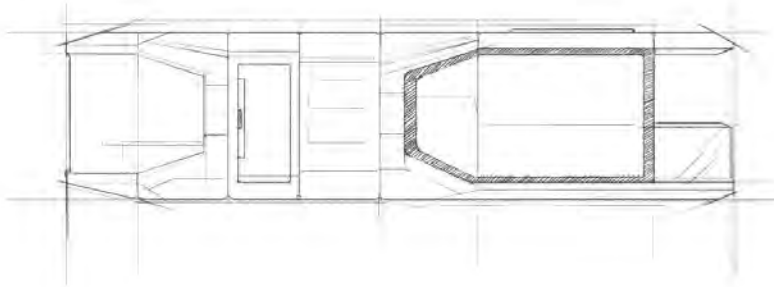


<b>MAIN STRUCTURE:</b>	Thickened steel frame, aluminum exterior panels, polyurethane insulation layer, panoramic wall curtain glass (6+12+6 insulating glass), aluminum doors and Windows, intelligent access control, foot support.
<b>INTERNAL STRUCTURE:</b>	Bamboo charcoal fiberboard wall, advanced waterproof composite wood floor, indoor and outdoor multi-color warm light, electric curtain, large skylight, the whole house intelligent control system, brand socket panel.
<b>SANITARY WARE:</b>	Glass side sliding door, smart toilet, water heater, shower, brand basin, brand faucet.
<b>MAIN EQUIPMENT:</b>	Gree central air conditioning, water heater, bath ba wind heating multi-in-one integrated bath ba.
<b>OPTIONAL:</b>	Electric floor heating, water pipe antifreeze, projector, fire smoke alarm, starry roof.

PRODUCT INTRODUCTION



PRIMARY



FIRST GENERATION



SECOND GENERATION



NEW THIRD GENERATION



Domestic version

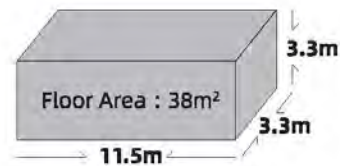


Export Version

K70



14 | PRODUCT SHOWCASE | K70



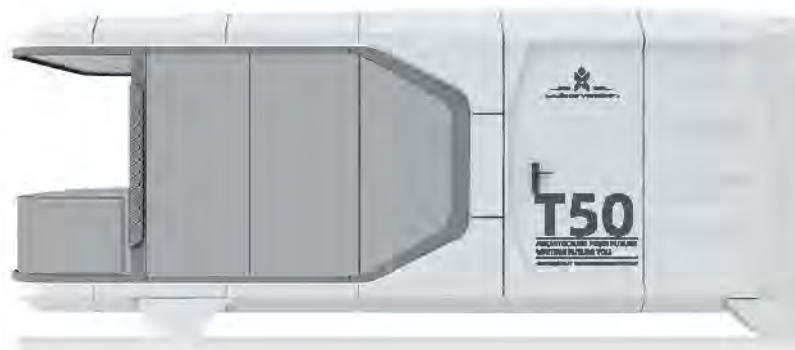
- MAIN STRUCTURE:** Thickened steel frame, aluminum exterior panels, polyurethane insulation layer, panoramic wall curtain glass (6+12+6 insulating glass), aluminum doors and Windows, intelligent access control, foot support.
- INTERNAL STRUCTURE:** Bamboo charcoal fiberboard wall, advanced waterproof composite wood floor, indoor and outdoor multi-color warm light, electric curtain, large skylight, the whole house intelligent control system, brand socket panel.
- SANITARY WARE:** Glass side sliding door, smart toilet, water heater, shower, brand basin, brand faucet.
- MAIN EQUIPMENT:** Gree central air conditioning, water heater, bath ba wind heating multi-in-one integrated bath ba.
- OPTIONAL:** Electric floor heating, water pipe antifreeze, projector, fire smoke alarm, starry roof.



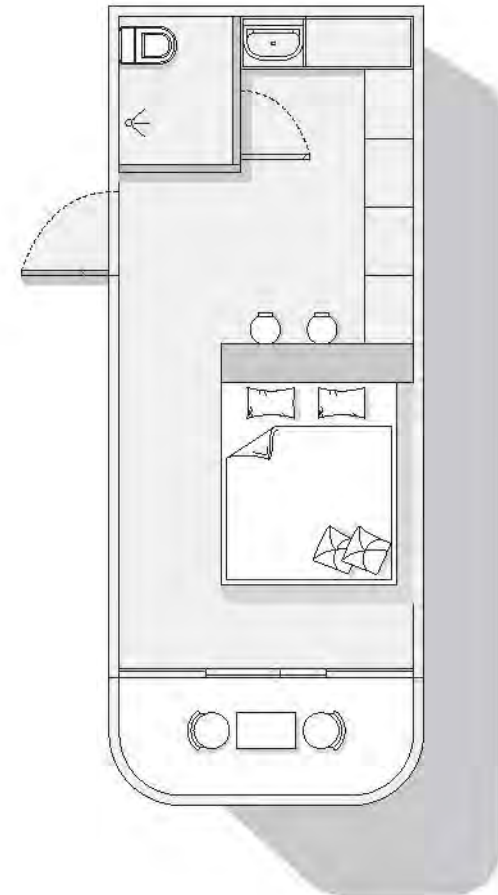
Domestic version



Export Version

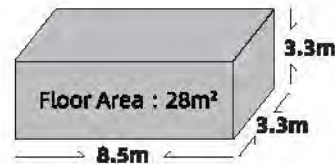


T50



PRODUCT  
SHOWCASE

T50



<b>MAIN STRUCTURE:</b>	Thickened steel frame, aluminum exterior panels, polyurethane insulation layer, panoramic wall curtain glass (6+12+6 insulating glass), aluminum doors and Windows, intelligent access control, foot support.
<b>INTERNAL STRUCTURE:</b>	Bamboo charcoal fiberboard wall, advanced waterproof composite wood floor, indoor and outdoor multi-color warm light, electric curtain, large skylight, the whole house intelligent control system, brand socket panel.
<b>SANITARY WARE:</b>	Glass side sliding door, smart toilet, water heater, shower, brand basin, brand faucet.
<b>MAIN EQUIPMENT:</b>	Gree central air conditioning, water heater, bath ba wind heating multi-in-one integrated bath ba.
<b>OPTIONAL:</b>	Electric floor heating, water pipe antifreeze, projector, fire smoke alarm, starry roof.

PRODUCT INTRODUCTION



**T50**

星舰品牌国际 | 房车生活家出品  
WORLDWIDE | 星舰

LUGNICEBIN

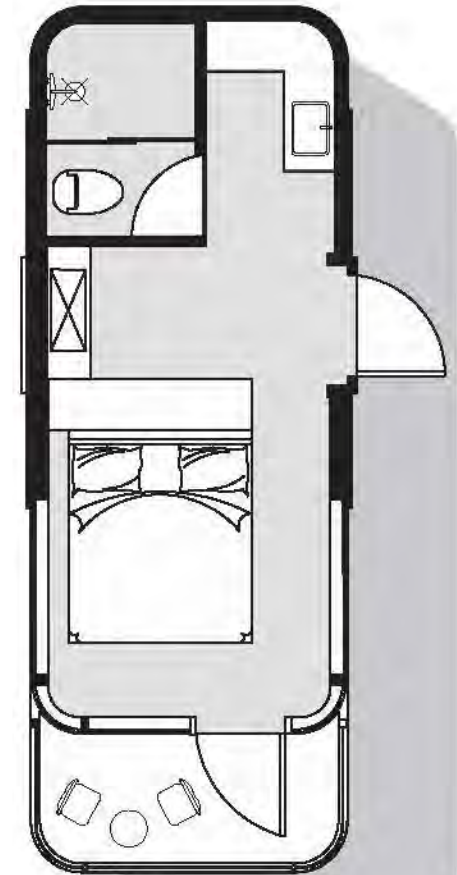
Domestic version



Export Version

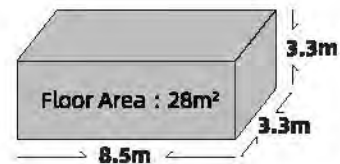


X50



PRODUCT  
SHOWCASE

X50



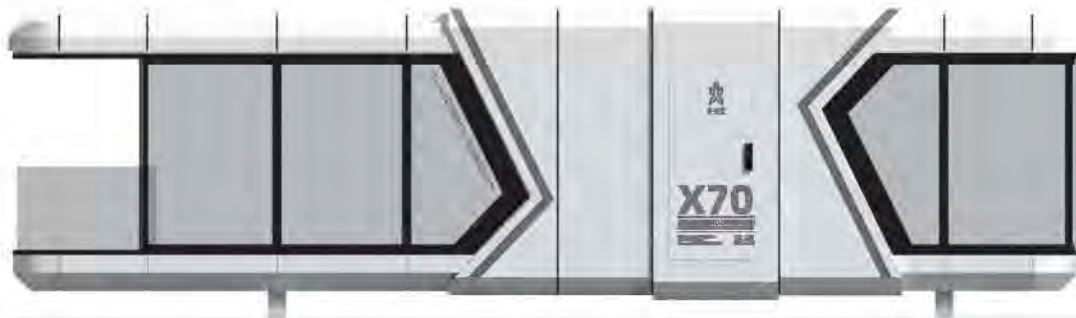
<b>MAIN STRUCTURE:</b>	Thickened steel frame, aluminum exterior panels, polyurethane insulation layer, panoramic wall curtain glass (6+12+6 insulating glass), aluminum doors and Windows, intelligent access control, foot support.
<b>INTERNAL STRUCTURE:</b>	Bamboo charcoal fiberboard wall, advanced waterproof composite wood floor, indoor and outdoor multi-color warm light, electric curtain, large skylight, the whole house intelligent control system, brand socket panel.
<b>SANITARY WARE:</b>	Glass side sliding door, smart toilet, water heater, shower, brand basin, brand faucet.
<b>MAIN EQUIPMENT:</b>	Gree central air conditioning, water heater, bath ba wind heating multi-in-one integrated bath ba.
<b>OPTIONAL:</b>	Electric floor heating, water pipe antifreeze, projector, fire smoke alarm, starry roof.

PRODUCT INTRODUCTION





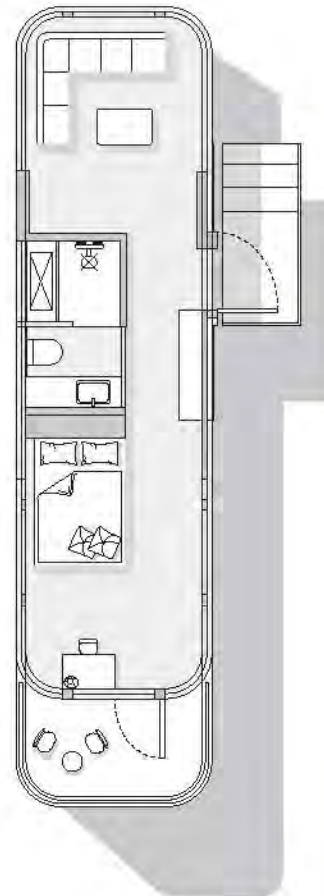
Domestic version



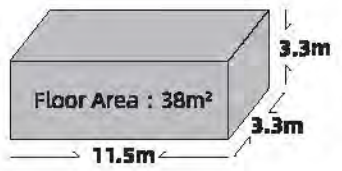
Export Version



X70



**PRODUCT SHOWCASE** | **X70**



<b>MAIN STRUCTURE:</b>	Thickened steel frame, aluminum exterior panels, polyurethane insulation layer, panoramic wall curtain glass (6+12+6 insulating glass), aluminum doors and Windows, intelligent access control, foot support.
<b>INTERNAL STRUCTURE:</b>	Bamboo charcoal fiberboard wall, advanced waterproof composite wood floor, indoor and outdoor multi-color warm light, electric curtain, large skylight, the whole house intelligent control system, brand socket panel.
<b>SANITARY WARE:</b>	Glass side sliding door, smart toilet, water heater, shower, brand basin, brand faucet.
<b>MAIN EQUIPMENT:</b>	Gree central air conditioning, water heater, bath ba wind heating multi-in-one integrated bath ba.
<b>OPTIONAL:</b>	Electric floor heating, water pipe antifreeze, projector, fire smoke alarm, starry roof.



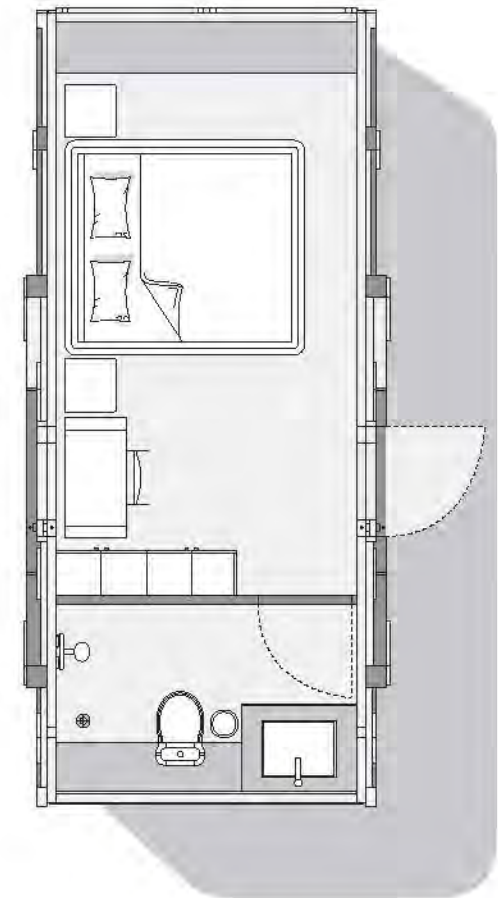
Domestic version



Export Version

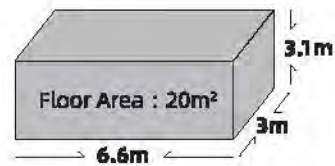


C30



PRODUCT  
SHOWCASE

C30



<b>MAIN STRUCTURE:</b>	Thickened steel frame, aluminum exterior panels, polyurethane insulation layer, panoramic wall curtain glass (6+12+6 insulating glass), aluminum doors and Windows, intelligent access control, foot support.
<b>INTERNAL STRUCTURE:</b>	Bamboo charcoal fiberboard wall, advanced waterproof composite wood floor, indoor and outdoor multi-color warm light, electric curtain, large skylight, the whole house intelligent control system, brand socket panel.
<b>SANITARY WARE:</b>	Glass side sliding door, smart toilet, water heater, shower, brand basin, brand faucet.
<b>MAIN EQUIPMENT:</b>	Gree central air conditioning, water heater, bath ba wind heating multi-in-one integrated bath ba.
<b>OPTIONAL:</b>	Electric floor heating, water pipe antifreeze, projector, fire smoke alarm, starry roof.

PRODUCT INTRO



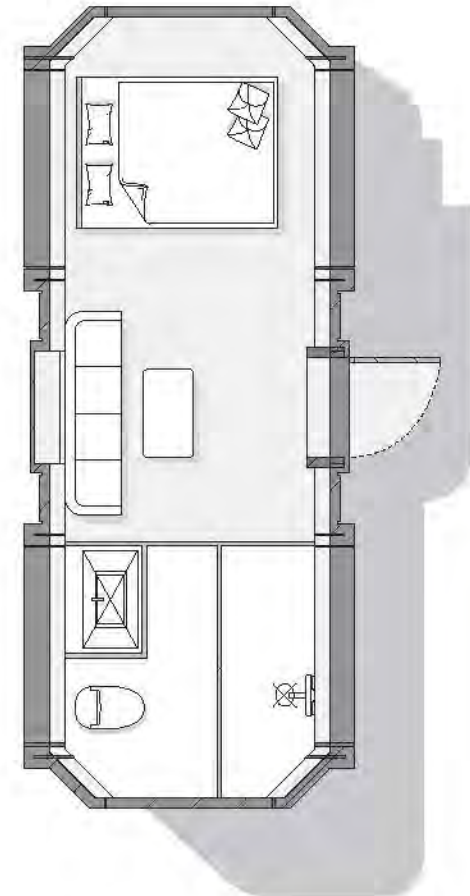
Domestic version



Export Version

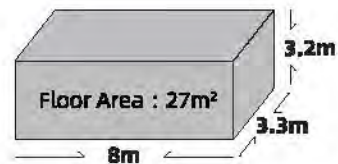


M50



PRODUCT  
SHOWCASE

M50



<b>MAIN STRUCTURE:</b>	Thickened steel frame, aluminum exterior panels, polyurethane insulation layer, panoramic wall curtain glass (6+12+6 insulating glass), aluminum doors and Windows, intelligent access control, foot support.
<b>INTERNAL STRUCTURE:</b>	Bamboo charcoal fiberboard wall, advanced waterproof composite wood floor, indoor and outdoor multi-color warm light, electric curtain, large skylight, the whole house intelligent control system, brand socket panel.
<b>SANITARY WARE:</b>	Glass side sliding door, smart toilet, water heater, shower, brand basin, brand faucet.
<b>MAIN EQUIPMENT:</b>	Gree central air conditioning, water heater, bath ba wind heating multi-in-one integrated bath ba.
<b>OPTIONAL:</b>	Electric floor heating, water pipe antifreeze, projector, fire smoke alarm, starry roof.



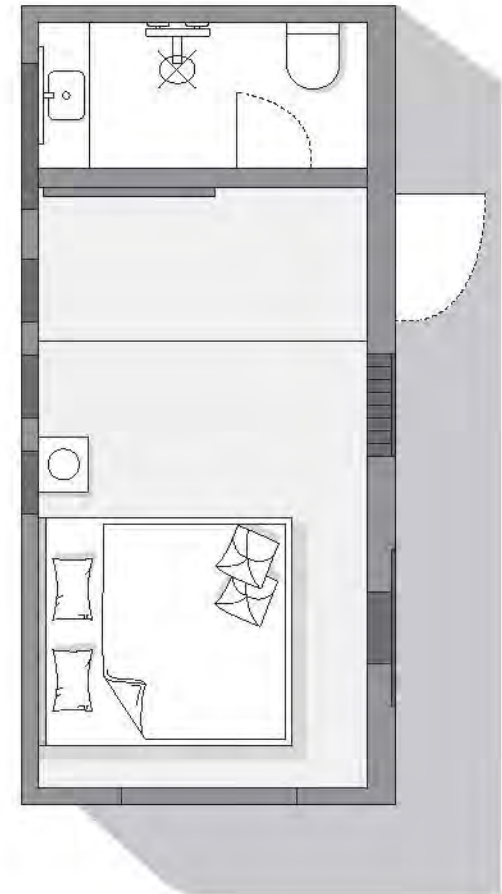
Domestic version



Export Version

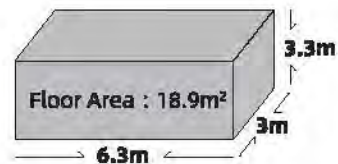


M30



PRODUCT  
SHOWCASE

M30



<b>MAIN STRUCTURE:</b>	Thickened steel frame, aluminum exterior panels, polyurethane insulation layer, panoramic wall curtain glass (6+12+6 insulating glass), aluminum doors and Windows, intelligent access control, foot support.
<b>INTERNAL STRUCTURE:</b>	Bamboo charcoal fiberboard wall, advanced waterproof composite wood floor, indoor and outdoor multi-color warm light, electric curtain, large skylight, the whole house intelligent control system, brand socket panel.
<b>SANITARY WARE:</b>	Glass side sliding door, smart toilet, water heater, shower, brand basin, brand faucet.
<b>MAIN EQUIPMENT:</b>	Gree central air conditioning, water heater, bath ba wind heating multi-in-one integrated bath ba.
<b>OPTIONAL:</b>	Electric floor heating, water pipe antifreeze, projector, fire smoke alarm, starry roof.



suban-cabin

  
**M30**  
MODERN OUTDOOR  
LIVING



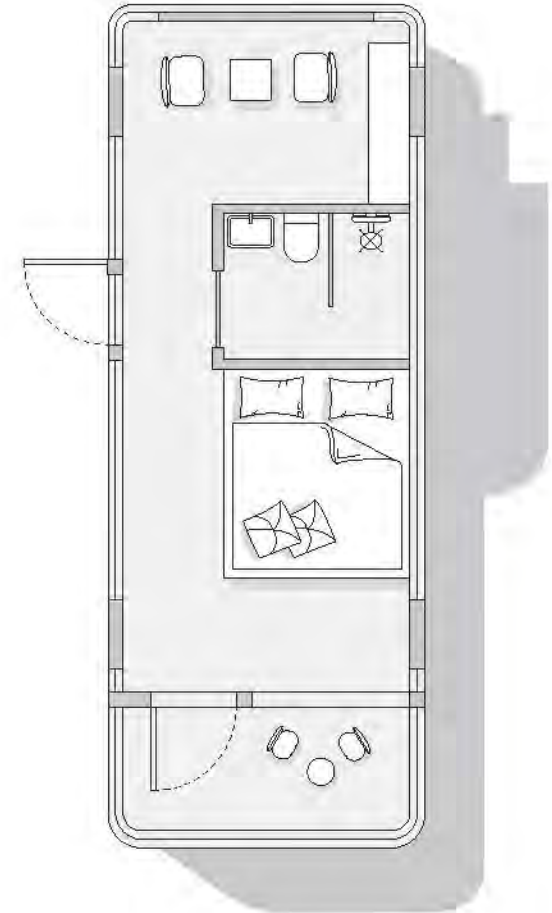
Domestic version



Export Version

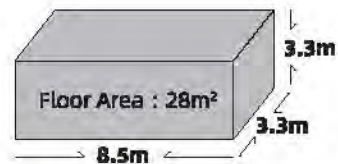


N50



PRODUCT  
SHOWCASE

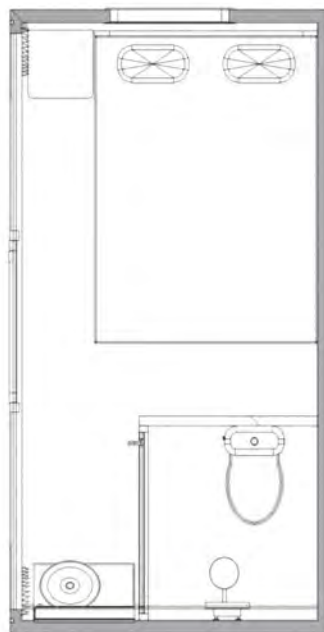
N50



<b>MAIN STRUCTURE:</b>	Thickened steel frame, aluminum exterior panels, polyurethane insulation layer, panoramic wall curtain glass (6+12+6 insulating glass), aluminum doors and Windows, intelligent access control, foot support.
<b>INTERNAL STRUCTURE:</b>	Bamboo charcoal fiberboard wall, advanced waterproof composite wood floor, indoor and outdoor multi-color warm light, electric curtain, large skylight, the whole house intelligent control system, brand socket panel.
<b>SANITARY WARE:</b>	Glass side sliding door, smart toilet, water heater, shower, brand basin, brand faucet.
<b>MAIN EQUIPMENT:</b>	Gree central air conditioning, water heater, bath ba wind heating multi-in-one integrated bath ba.
<b>OPTIONAL:</b>	Electric floor heating, water pipe antifreeze, projector, fire smoke alarm, starry roof.

PRODUCT INTRODUCTION

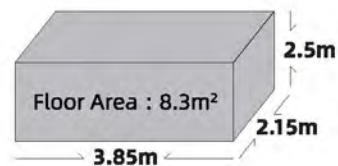




E30

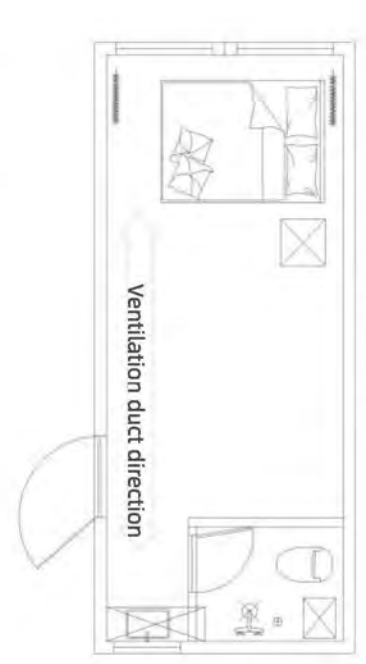
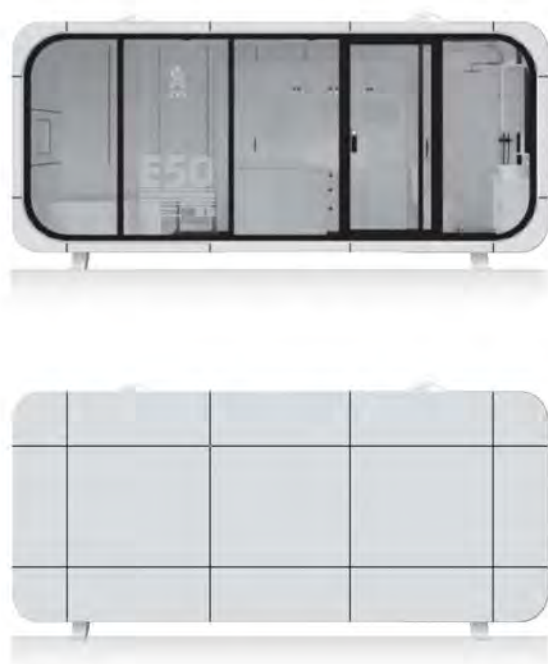


PRODUCT SHOWCASE | **E30**



<b>MAIN STRUCTURE</b>	: Thickened steel frame, aluminum exterior panels, polyurethane insulation layer, panoramic wall curtain glass (6+12+6 insulating glass), aluminum doors and windows, intelligent access control, foot support.
<b>INTERNAL STRUCTURE</b>	: Bamboo charcoal fiberboard wall, advanced waterproof composite wood floor, indoor and outdoor multi-color warm light, electric curtain, large skylight, the whole house intelligent control system, brand socket panel.
<b>SANITARY WARE</b>	: Glass side sliding door, smart toilet, water heater, shower, brand basin, brand faucet.
<b>MAIN EQUIPMENT</b>	: Gree central air conditioning, water heater, bath fan wind heating multi-in-one integrated bath fan.
<b>OPTIONAL</b>	: Electric floor heating, water pipe antifreeze, projector, fire smoke alarm, starry roof.

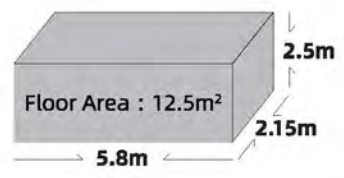
**PRODUCT INTRODUCTION**



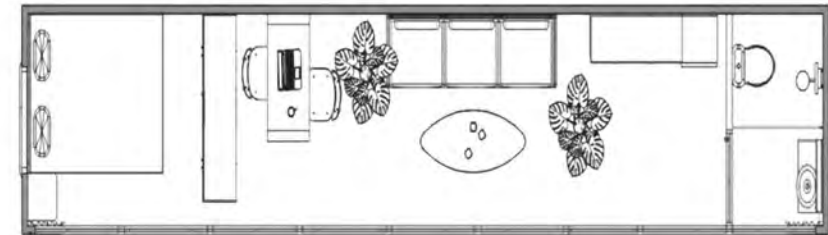
**E50**



**PRODUCT SHOWCASE | E50**



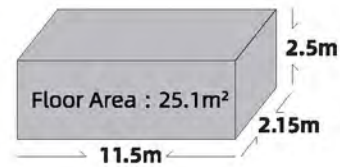
<b>MAIN STRUCTURE</b>	: Thickened steel frame, aluminum exterior panels, polyurethane insulation layer, panoramic wall curtain glass (6+12+6 insulating glass), aluminum doors and windows, intelligent access control, foot support.
<b>INTERNAL STRUCTURE</b>	: Bamboo charcoal fiberboard wall, advanced waterproof composite wood floor, indoor and outdoor multi-color warm light, electric curtain, large skylight, the whole house intelligent control system, brand socket panel.
<b>SANITARY WARE</b>	: Glass side sliding door, smart toilet, water heater, shower, brand basin, brand faucet.
<b>MAIN EQUIPMENT</b>	: Gree central air conditioning, water heater, bath with wind heating multi-in-one integrated bath.
<b>OPTIONAL</b>	: Electric floor heating, water pipe antifreeze, projector, fire smoke alarm, starry roof.



E70



**PRODUCT  
SHOWCASE** | **E70**



**MAIN STRUCTURE** : Thickened steel frame, aluminum exterior panels, polyurethane insulation layer, panoramic wall curtain glass (6+12+6 insulating glass), aluminum doors and windows, intelligent access control, foot support.

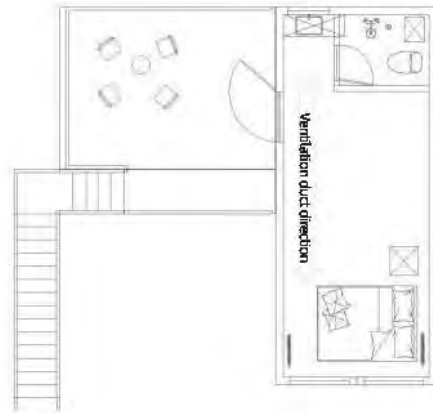
**INTERNAL STRUCTURE**: Bamboo charcoal fiberboard wall, advanced waterproof composite wood floor, indoor and outdoor multi-color warm light, electric curtain, large skylight, the whole house intelligent control system, brand socket panel.

**SANITARY WARE** : Glass side sliding door, smart toilet, water heater, shower, brand basin, brand faucet.

**MAIN EQUIPMENT** : Gree central air conditioning, water heater, bath with wind heating multi-in-one integrated bath.

**OPTIONAL** : Electric floor heating, water pipe antifreeze, projector, fire smoke alarm, starry roof.

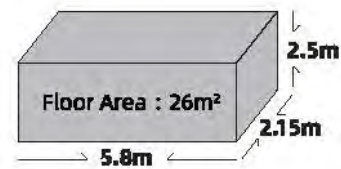
**PRODUCT INTRODUCTION**



**D50**



**PRODUCT SHOWCASE | D50**



<b>MAIN STRUCTURE</b>	: Thickened steel frame, aluminum exterior panels, polyurethane insulation layer, panoramic wall curtain glass (6+12+6 Insulating glass), aluminum doors and windows, intelligent access control, foot support.
<b>INTERNAL STRUCTURE</b>	: Bamboo charcoal fiberboard wall, advanced waterproof composite wood floor, indoor and outdoor multi-color warm light, electric curtain, large skylight, the whole house intelligent control system, brand socket panel.
<b>SANITARY WARE</b>	: Glass side sliding door, smart toilet, water heater, shower, brand basin, brand faucet.
<b>MAIN EQUIPMENT</b>	: Gree central air conditioning, water heater, bath ba wind heating multi-in-one integrated bath ba.
<b>OPTIONAL</b>	: Electric floor heating, water pipe antifreeze, projector, fire smoke alarm, starry roof.

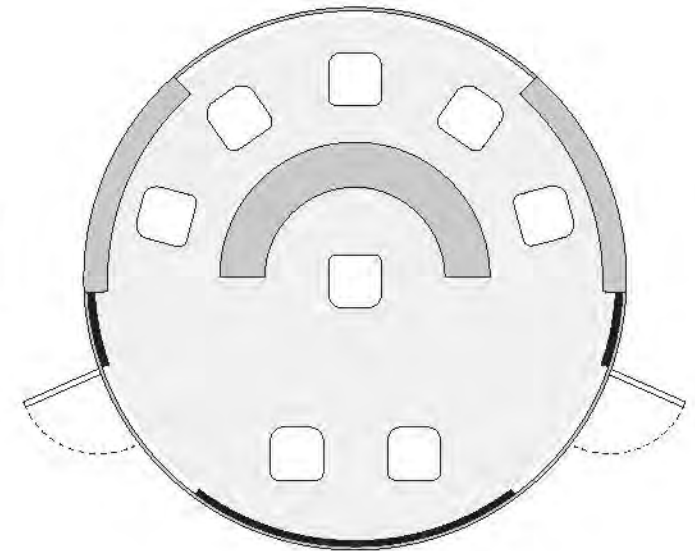
Domestic version



Export Version



U30



PRODUCT  
SHOWCASE

U30



2.7m

<b>MAIN STRUCTURE:</b>	Thickened steel frame, aluminum exterior panels, polyurethane insulation layer, panoramic wall curtain glass (6+12+6 insulating glass), aluminum doors and windows, intelligent access control, foot support.
<b>INTERNAL STRUCTURE:</b>	Bamboo charcoal fiberboard wall, advanced waterproof composite wood floor, indoor and outdoor multi-color warm light, electric curtain, large skylight, the whole house intelligent control system, brand socket panel.
<b>SANITARY WARE:</b>	Glass side sliding door, smart toilet, water heater, shower, brand basin, brand faucet.
<b>MAIN EQUIPMENT:</b>	Gree central air conditioning, water heater, bath ba wind heating multi-in-one integrated bath ba.
<b>OPTIONAL:</b>	Electric floor heating, water pipe antifreeze, projector, fire smoke alarm, starry roof.

PRODUCT INTRODUCTION



**U30**  
来自未来的建筑 等待未来的你  
Architecture from future / Waiting future you  
电话: 021-3020 8888  
地址: 上海浦东新区  
www.u30.com.cn



Domestic version



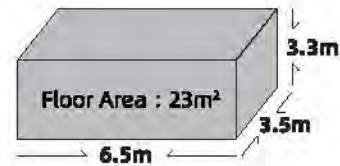
Export Version



FH30



**PRODUCT SHOWCASE | FH30**



- MAIN STRUCTURE:** Thickened steel frame, aluminum exterior panels, polyurethane insulation layer, panoramic wall curtain glass (6+12+6 Insulating glass), aluminum doors and Windows, Intelligent access control, foot support.
- INTERNAL STRUCTURE:** Bamboo charcoal fiberboard wall, advanced waterproof composite wood floor, Indoor and outdoor multi-color warm light, electric curtain, large skylight, the whole house intelligent control system, brand socket panel.
- SANITARY WARE:** Glass side sliding door, smart toilet, water heater, shower, brand basin, brand faucet.
- MAIN EQUIPMENT:** Gree central air conditioning, water heater, bath ba wind heating multi-in-one integrated bath ba.
- OPTIONAL:** Electric floor heating, water pipe antifreeze, projector, fire smoke alarm, starry roof.

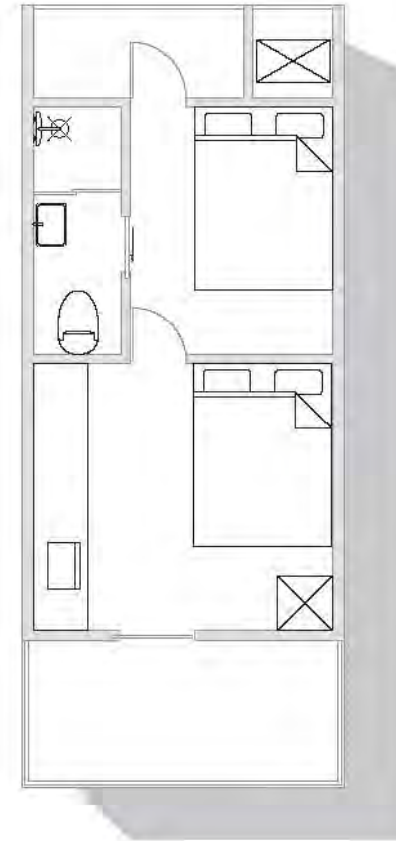
Domestic version



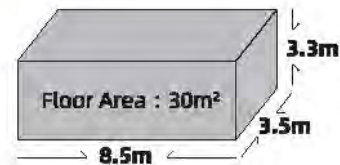
Export Version



FH60



PRODUCT SHOWCASE | FH60



<b>MAIN STRUCTURE:</b>	Thickened steel frame, aluminum exterior panels, polyurethane insulation layer, panoramic wall curtain glass (6+12+6 Insulating glass), aluminum doors and Windows, intelligent access control, foot support.
<b>INTERNAL STRUCTURE:</b>	Bamboo charcoal fiberboard wall, advanced waterproof composite wood floor, Indoor and outdoor multi-color warm light, electric curtain, large skylight, the whole house intelligent control system, brand socket panel.
<b>SANITARY WARE:</b>	Glass side sliding door, smart toilet, water heater, shower, brand basin, brand faucet.
<b>MAIN EQUIPMENT:</b>	Gre central air conditioning, water heater, bath ba wind heating multi-in-one integrated bath ba.
<b>OPTIONAL:</b>	Electric floor heating, water pipe antifreeze, projector, fire smoke alarm, starry roof.

Domestic version



Export Version

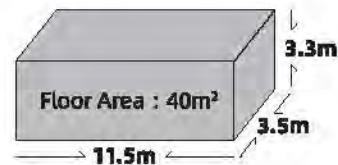


FH90



PRODUCT  
SHOWCASE

FH90



**MAIN STRUCTURE:** Thickened steel frame, aluminum exterior panels, polyurethane insulation layer, panoramic wall curtain glass (6+12+6 Insulating glass), aluminum doors and Windows, intelligent access control, foot support.

**INTERNAL STRUCTURE:** Bamboo charcoal fiberboard wall, advanced waterproof composite wood floor, indoor and outdoor multi-color warm light, electric curtain, large skylight, the whole house intelligent control system, brand socket panel.

**SANITARY WARE:** Glass side sliding door, smart toilet, water heater, shower, brand basin, brand faucet.

**MAIN EQUIPMENT:** Gree central air conditioning, water heater, bath ba wind heating multi-in-one integrated bath ba.

**OPTIONAL:** Electric floor heating, water pipe antifreeze, projector, fire smoke alarm, stary roof.

**PRODUCT INTRODUCTION**



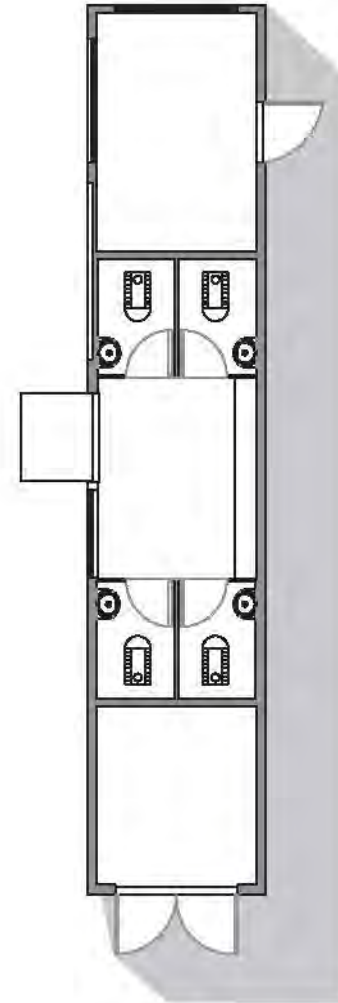
Domestic version



Export Version

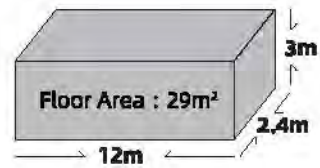


OT11



PRODUCT  
SHOWCASE

OT11



<b>MAIN STRUCTURE:</b>	Thickened steel frame, aluminum exterior panels, polyurethane insulation layer, aluminum doors and Windows, Intelligent access control, foot support.
<b>INTERNAL STRUCTURE:</b>	Bamboo charcoal fiberboard wall, advanced waterproof composite wood floor, indoor and outdoor multi-color warm light, electric curtain, brand socket panel.
<b>SANITARY WARE:</b>	Squatting Toilet, Urinal, Cosmetic mirror, Automatic sensor faucet, Handrails for the disabled.
<b>MAIN EQUIPMENT:</b>	Monitoring Systems, Electrical Controls, Water Circuit, Lighting System, Large Display Screen, Exhaust system.
<b>OPTIONAL:</b>	Multimedia Screen, Vacuum System, Manure treatment system, Energy Storage Booster Pumps, Soap Wave Machine, Sweep code dispenser, Signage, Public Management Module.

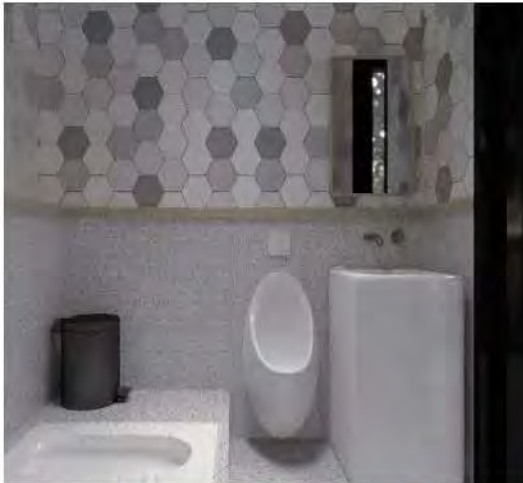
PRODUCT INTRODUCTION



**OT11**  
AUCH FÜR DIE ZUKUNFT  
DAS BESTE FÜR SICH SELBST  
© 2011/12/15

## INTERNAL CONFIGURATION

## PRODUCT INTRODUCTION



**PRODUCT INTRODUCTION**



**STARFIRE SERIES** **OT10**



**STARFIRE SERIES** **OT30**



**STARFIRE SERIES** **OT40**



**STARFIRE SERIES** **OT50**



**STARFIRE SERIES** **OT80**



**STARFIRE SERIES** **OT90**



## USAGE SCENARIO



### BEAUTIFUL RURAL LUXURY RESORT

ONE

It is convenient and eco-friendly to dismantle and build, it is the best choice for holding various themed activities, outdoor camping and accommodation activities, outdoor equipment exhibition.

### CULTURAL AND TOURISM COMPLEX AND FOREST HEALTH VALLEY

TWO

The capsule house adapt to a variety of terrain environment, and it is convenient for transportation. It provides a more superior choice for the development of cultural tourism and health care industry.

### URBAN RENEWAL SPACE AND CITIZEN STATION

THREE

It covers a small area and is practical, and can replace some public facilities in urban construction, such as blood donation point, public toilet, citizen station, etc.

**ONE-STOP SERVICE**



**SMART TOURISM SHARING CAMPING SITE**      **FOUR**

It can be used for group building development, travel study research, travel camping to enhance the sense of experience and enjoy the ease of natural intimacy.

**ECOLOGICAL RESORT HOTEL**      **FIVE**

The resort hotel introduces the future cabin, which not only absorbs the eye and drains, but also saves time, land area and engineering cost.

**EDUCATION, MEDICAL CARE, HEALTH CARE AND OLD-AGE CARE**      **SIX**

In terms of education, medical care and health care for the elderly, it provides convenient stations and intelligent facilities to assist education and medical care, and the design is more humane.

# CAMP PLANNING



Cabin Starship X50

Cabin Themed outdoor project

Cabin Themed outdoor project

Cabin Theme art landscape

Cabin Starship T50

Cabin Star wall

Cabin Themed activity terrace

Cabin Starship X70

Cabin Theme art landscape

Cabin Camp park Intelligent access control

Cabin Entrance terrace



**ONE-STOP HIGH-END  
CAMP SOLUTION**

**ONE-STOP SERVICE**



## LANDING CASE



### JILIN FOREST SLOW VALLEY TOURIST RESORT

Project location: Xiangyang Village, Badaohezi Town,  
Jilin City

Design completion time: October 2016

Building area: 1130 square meters

Project scale: 30sets, The number of tourists has exceeded 1 million

**ONE-STOP SERVICE**



Design completion time: October 2017  
Building area: 3000 square meters  
Project scale: 85 sets



Design completion time: June 2017  
Building area: 1520m<sup>2</sup>  
Project scale: 80sets



Design completion time: July 2018  
Building area: 2000m<sup>2</sup>  
Project scale: 98 sets



Design completion time: May 2018  
Building area: 1600m<sup>2</sup>  
Project scale: 60 sets

## LANDING CASE



### TONGJIAJIANG TOURIST RESORT, TONGHUA, JILIN

Project location: Yanjiang Road, Dongchang District,  
Tonghua City  
Design completion time: December 2022  
Building area: 5000 square meters  
Project scale: 100sets, the number of visitors has exceeded 2  
million

**ONE-STOP SERVICE**



**YUNXIAN SEVEN STAR ECOLOGICAL GROUP PROJECT DEPARTMENT,  
LINCANG CITY, YUNNAN PROVINCE**

Design completion time: June 2019  
Construction area: 1860m<sup>2</sup>  
Project scale: 56 sets



**SHAANXI MIANXIAN LAOLISHI  
CERAMICS**

Design completion time: December  
2019  
Building area: 1000 square meters  
Project scale: 50 sets



**WAYAO VILLAGE, XIMALIN TOWN, ZHANGJIAKOU CITY,  
HEBEI PROVINCE**

Design completion time: December  
2020  
Building area: 2000m<sup>2</sup>  
Project scale: 77 sets



**SHANGLINZHAI SCENIC SPOT,  
NANNING CITY, GUANGXI PROVINCE**

Design completion time: June 2020  
Building area: 1000 square meters  
Project scale: 90sets



# TRANSPORTATION MODE



**ONE-STOP SERVICE**



## TRANSPORTATION MODE

### REMARK

Before installing the product, the customer needs to complete the on-site engineering of water supply, power supply, sewage pipeline and load-bearing foundation according to our product standard basic hydropower drawings. Under the guidance of our technicians, it will be accurately positioned to the designed installation point. After the water and electricity are connected, the water and electricity test will be completed and handed over to the customer for acceptance.

# 1

Our company unified arrangement of truck transport to the project site.  
The standard truck is 17.5m long semi-trailer, 3m transport width, transport height no more than 4.2m, can be free to pass the national highway.

# 2

After the goods arrive at the site, the customer needs to contact the local crane service. Our technical team will arrive at the site in advance for guidance. Lifting weight of 5 to 10 tons, it is recommended to use not less than 25 tons of crane loading and unloading.



## REMARK

Before installing the product, the customer needs to complete the on-site engineering of water supply, power supply, sewage pipeline and load-bearing foundation according to our product standard basic hydropower drawings. Under the guidance of our technicians, it will be accurately positioned to the designed installation point. After the water and electricity are connected, the water and electricity test will be completed and handed over to the customer for acceptance.

## ONE-STOP SERVICE

### (一) STANDARD VERSION OF DISASSEMBLED TYPE

This version is a cleverly divided style of the standard size. Its design allows the cabin to be easily loaded into a 40-foot high container, greatly optimizing the use of transportation space, effectively reducing transportation costs, and ensuring the user experience after the customers receive the goods. However, please note that some simple manual assembly is required upon arrival, but this process is not complex and can be completed by following the instructions.



### (二) REDUCED SIZE FULLY ASSEMBLED MODEL

To meet the loading requirements of a 40-foot high container, we have specially introduced this reduced size, fully assembled model. It has been moderately adjusted in height and width to ensure that the finished product can be shipped as a whole, without the need for additional disassembly. This not only saves on transportation costs but also eliminates the assembly process, further reducing labor costs.



### (三) STANDARD VERSION OF FLAT RACK CONTAINER MODEL

This version retains the standard dimensions, offering spacious and comfortable space that provides an excellent living experience for users. Due to its larger size, we have specially designed a flat rack container for shipping to ensure stability and safety during transport. Compared to other models, this version saves a considerable amount of labor costs. Upon arrival, only simple hoisting operations are needed, and it can be inhabited within two hours, making it convenient and fast.



# SIGNING CEREMONY



SERVED MORE THAN 60+ COUNTRIES

60+

SERVICE CUSTOMERS AS MANY AS 170+

370+