

Boeing 747-400BCF

For Sale or Lease

***All information confidential and
not for release to other parties or to the market.***



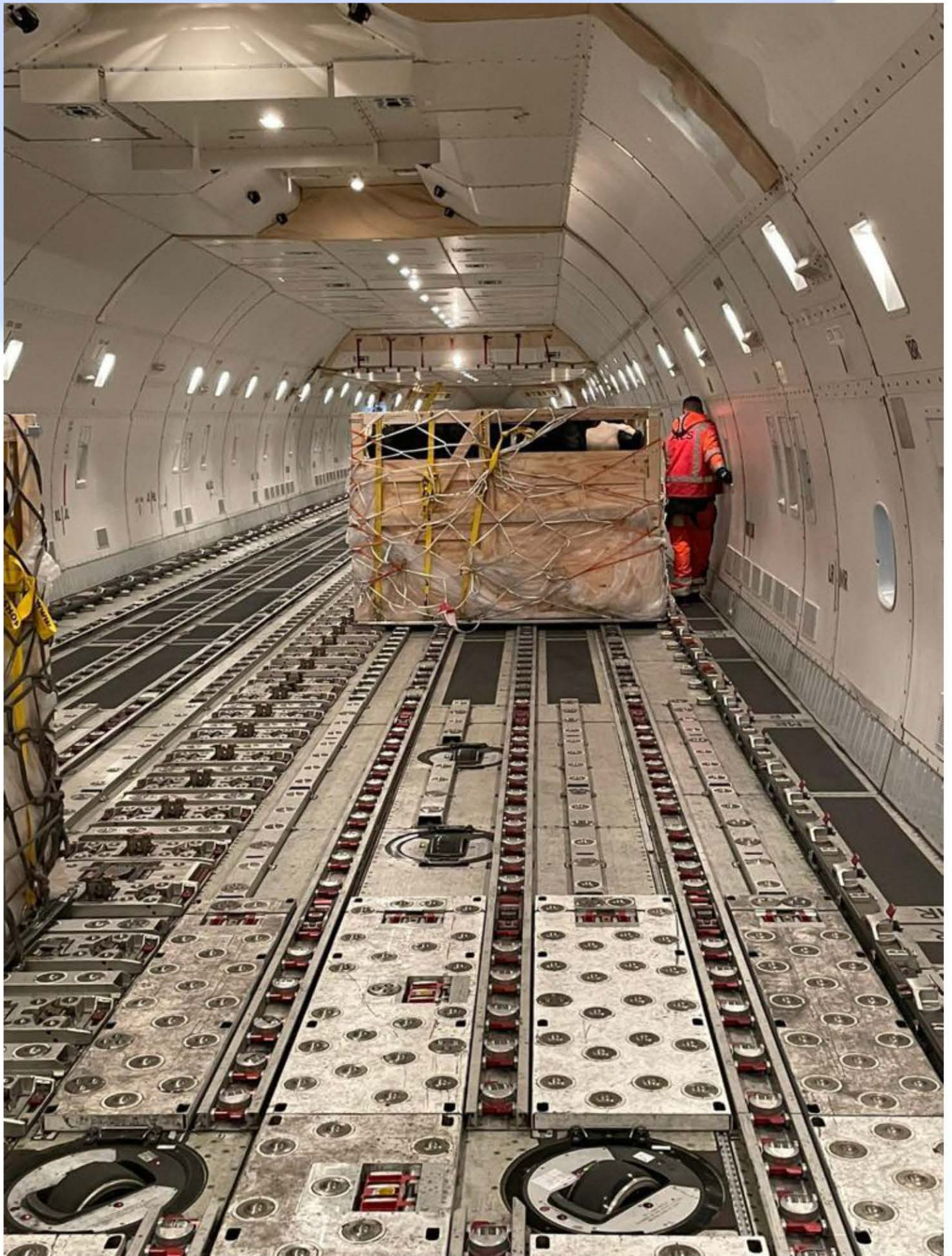
***Boeing 747- 400.the most recognizable freighter aircraft
in the skies***

***When it comes to the ultimate in long haul, large freighter
aircraft the Boeing 747 stands unmatched. The B747-400BCF
can carry over 245,000 pounds of cargo for approximately
7,000 miles. As an added value a spare engine will be included
in the sale or lease of the aircraft. Qualified buyers or their
representatives can call or email us with your questions or to
request more information. Include some basic information
about your company and your cargo requirements.***









Key features of this Boeing 747-400BCF Freighter –

- “D” Check accomplished in July 2019 – Next due in July 2025
- “C1, C2 & C4” checks in July 2021.
- Boeing Freighter conversion.
- Pratt & Whitney PW-4056 engines – Spare fifth engine with approx. 64,281 ETT included in sale.
- Max. takeoff weight 870,000 pounds – Cargo capacity over 245,000 pounds
- Fastest cargo jet available with approximately 7,000-mile range.
- Operational support from current AOC available.

***For Sale and Some Leases Considered
“Where is, As Is” or As Negotiated and Agreed***

Aircraft Status

Serial Number: 24975

Year Model: 1991

<i>Airframe -</i>	
Total Time:	88,886 hrs.
Landings:	15,085
<i>APU Model: P&W PW901A</i>	
APU Total Time:	31,022 hrs.

<i>Engines -</i>				
<i>Model: Pratt & Whitney PW4056</i>				
	<i>#1</i>	<i>#2</i>	<i>#3</i>	<i>#4</i>
TTSN Hours:	70,943 hrs.	64,633 hrs.	64,628 hrs.	63,827 hrs.
1 st Limiter	8,533 cyc.	5,442 cyc.	474 cyc.	6,798 cyc.
Due in:	HPT 2 Seal	HPT 1 Seal	LPT module	HPT 1 Seal





***Approximate Range for Boeing 747-400BCF from New York, USA
(Subject to winds and weather)***

