

OFF MARKET A320-232

YOM: 2011



V2500-A5 Engines with approximately 4'000 Remaining Cycles
Fresh C-check
Returned to service

AIRCRAFT SUBJECT TO PRIOR SALE WITHOUT PREVIOUS NOTICE

LOI and 10% deposit in escrow required to pre-hold

A-320-232 SPECIFICATION SUMMARY

AIRCRAFT

Model	A320-232	Line No.	N/A	Total Time	33577:00
Serial No.	TBA	Version Rank	N/A	Aircraft Total Cycles	15702
Registration	TBA	Manufacture Date	OCT 21,2011	As of Date	17-Nov-23

ENGINE

Position #1	Engine Model	V2500			
	Engine S/N	TBA	Thrust Rating	V2527-A5	
	Engine Total Time	29671:10	Engine Total Cycles	14848	
	Time Since last SV	15121:07	Cycles Since last SV	7015	As of Date 17-Nov-23
Position #2	Engine S/N	TBA	Thrust Rating	V2527-A5	
	Engine Total Time	30449:25	Engine Total Cycles	14311	
	Time Since last SV	25698:04	Cycles Since last SV	12118	As of Date 17-Nov-23

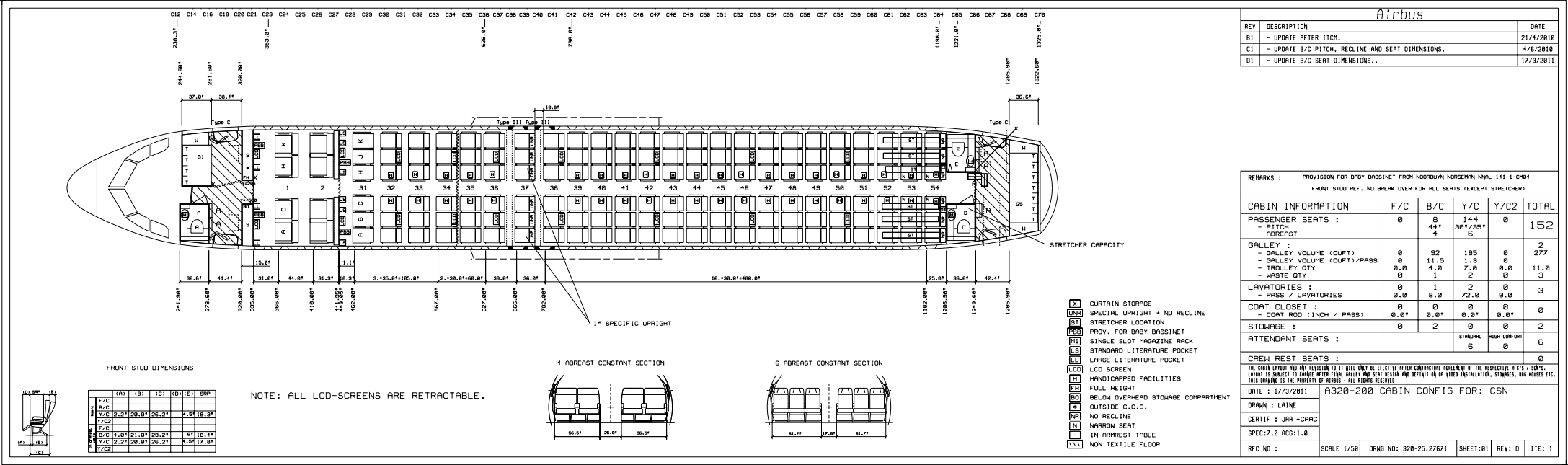
LANDING GEAR

Nose Gear	Part Number	NA28008-14	Serial Number	TBA	
	Assy. Total Time	34040:29	Assy. Total Cycles	16897	
	Assy. Time since O/H	4506	Assy. Cycles since O/H	1735	As of Date 17-Nov-23
L/H MLG	Part Number	201581001	Serial Number	TBA	
	Assy. Total Time	34040:29	Assy. Total Cycles	16897	
	Assy. Time since O/H	4506	Assy. Cycles since O/H	1735	As of Date 17-Nov-23
R/H MLG	Part Number	201581002	Serial Number	TBA	
	Assy. Total Time	34040:29	Assy. Total Cycles	16897	
	Assy. Time since O/H	4506	Assy. Cycles since O/H	1735	As of Date 17-Nov-23

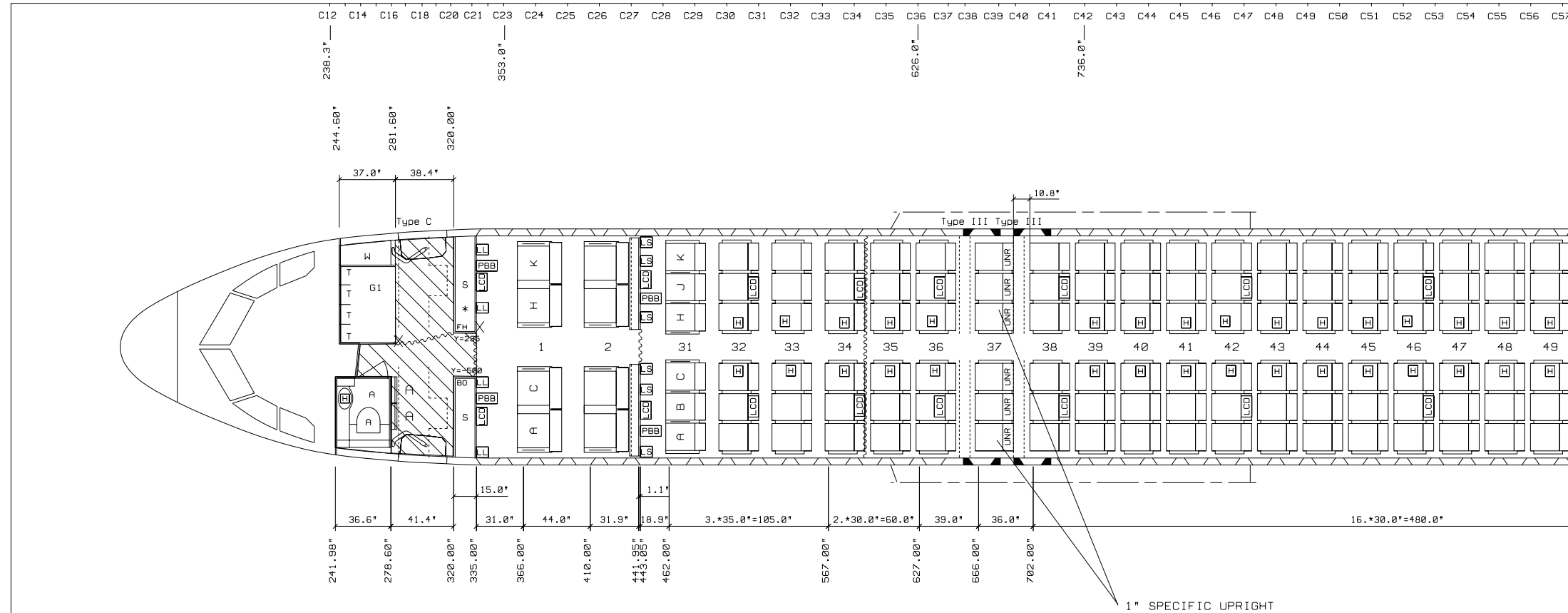
APU					
Part Number		4500001B	Serial Number		TBA
Total Time		30564	Total Cycles		27652
Time Since last SV		6834	Cycles Since last SV		6526
				As of Date	17-Nov-23

--	--	--	--	--	--

T



L

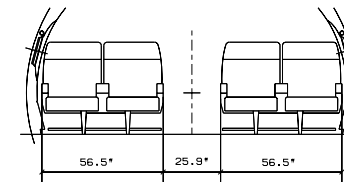


FRONT STUD DIMENSIONS

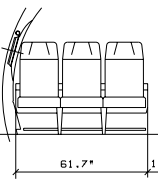
	(A)	(B)	(C)	(D)	(E)	SRP
Basic	F/C					
	B/C					
	Y/C	2.2"	20.0"	26.2"	4.5"	18.3"
	Y/C2					
In overrest	F/C					
	B/C	4.0"	21.0"	29.2"	6"	18.4"
	Y/C	2.2"	20.0"	26.2"	4.5"	17.8"
	Y/C2					

NOTE : ALL LCD-SCREENS ARE RETRACTABLE.

4 ABREAST CONSTANT SECTION



6 ABREAST CO



C53 C54 C55 C56 C57 C58 C59 C60 C61 C62 C63 C64 C65 C66 C67 C68 C69 C70

1198.0"

1221.0"

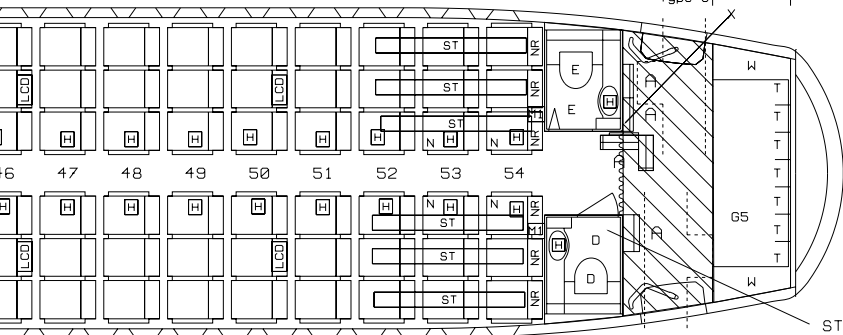
1325.0"

1285.98"

1322.60"

36.6"

Type C



STRETCHER CAPACITY

1480.0"

25.0"

36.6"

42.4"

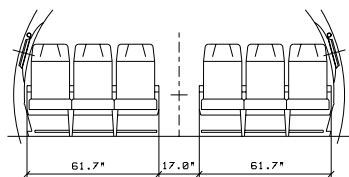
1182.00"

1206.98"

1243.60"

1285.98"

6 ABREAST CONSTANT SECTION



- [X] CURTAIN STORAGE
- [UNR] SPECIAL UPRIGHT + NO RECLINE
- [ST] STRETCHER LOCATION
- [PBB] PROV. FOR BABY BASSINET
- [M1] SINGLE SLOT MAGAZINE RACK
- [LS] STANDARD LITERATURE POCKET
- [LL] LARGE LITERATURE POCKET
- [LCD] LCD SCREEN
- [H] HANDICAPPED FACILITIES
- [FH] FULL HEIGHT
- [BO] BELOW OVERHEAD STOWAGE COMPARTMENT
- [*] OUTSIDE C.C.G.
- [NR] NO RECLINE
- [N] NARROW SEAT
- [-] IN ARMREST TABLE
- [\\/] NON TEXTILE FLOOR

Airbus

REV	DESCRIPTION	DATE
B1	- UPDATE AFTER ITCM.	21/4/2010
C1	- UPDATE B/C PITCH, RECLINE AND SEAT DIMENSIONS.	4/6/2010
D1	- UPDATE B/C SEAT DIMENSIONS..	17/3/2011

REMARKS : PROVISION FOR BABY BASSINET FROM NOORDUYN NORSEMAN NNAL-141-1-CM04
FRONT STUD REF. NO BREAK OVER FOR ALL SEATS (EXCEPT STRETCHER)

CABIN INFORMATION	F/C	B/C	Y/C	Y/C2	TOTAL
PASSENGER SEATS : - PITCH - ABREAST	0	8 44" 4	144 30"/35" 6	0	152
GALLEY : - GALLEY VOLUME (CUFT) - GALLEY VOLUME (CUFT)/PASS - TROLLEY QTY - WASTE QTY	0 0 0.0 0	92 11.5 4.0 1	185 1.3 7.0 2	0 0 0.0 0	2 277 11.0 3
LAVATORIES : - PASS / LAVATORIES	0 0.0	1 8.0	2 72.0	0 0.0	3
COAT CLOSET : - COAT ROD (INCH / PASS)	0 0.0"	0 0.0"	0 0.0"	0 0.0"	0
STOWAGE :	0	2	0	0	2
ATTENDANT SEATS :			STANDARD 6	HIGH COMFORT 0	6
CREW REST SEATS :					0
THE CABIN LAYOUT AND ANY REVISION TO IT WILL ONLY BE EFFECTIVE AFTER CONTRACTUAL AGREEMENT OF THE RESPECTIVE AFC'S / SCN'S. LAYOUT IS SUBJECT TO CHANGE AFTER FINAL GALLEY AND SEAT DESIGN AND DEFINITION OF VIDEO INSTALLATION, STOWAGES, DOG HOUSES ETC. THIS DRAWING IS THE PROPERTY OF AIRBUS - ALL RIGHTS RESERVED					
DATE : 17/3/2011	A320-200 CABIN CONFIG FOR: CSN				
DRAWN : LAINE					
CERTIF : JAA +CAAC					
SPEC:7.0 ACG:1.0					
RFC NO :	SCALE 1/50	DRWG NO: 320-25.27671	SHEET:01	REV: 0	ITE: 1