



## SIEMENS GAS TURBINE PLANT

Gas Turbine power plant operated predominately on natural gas with standby diesel fuel. Can be converted to alternative fuels as heavy fuel oil . Depends on the demand and needs of the customer.

Can be dismantled and transferred to other location

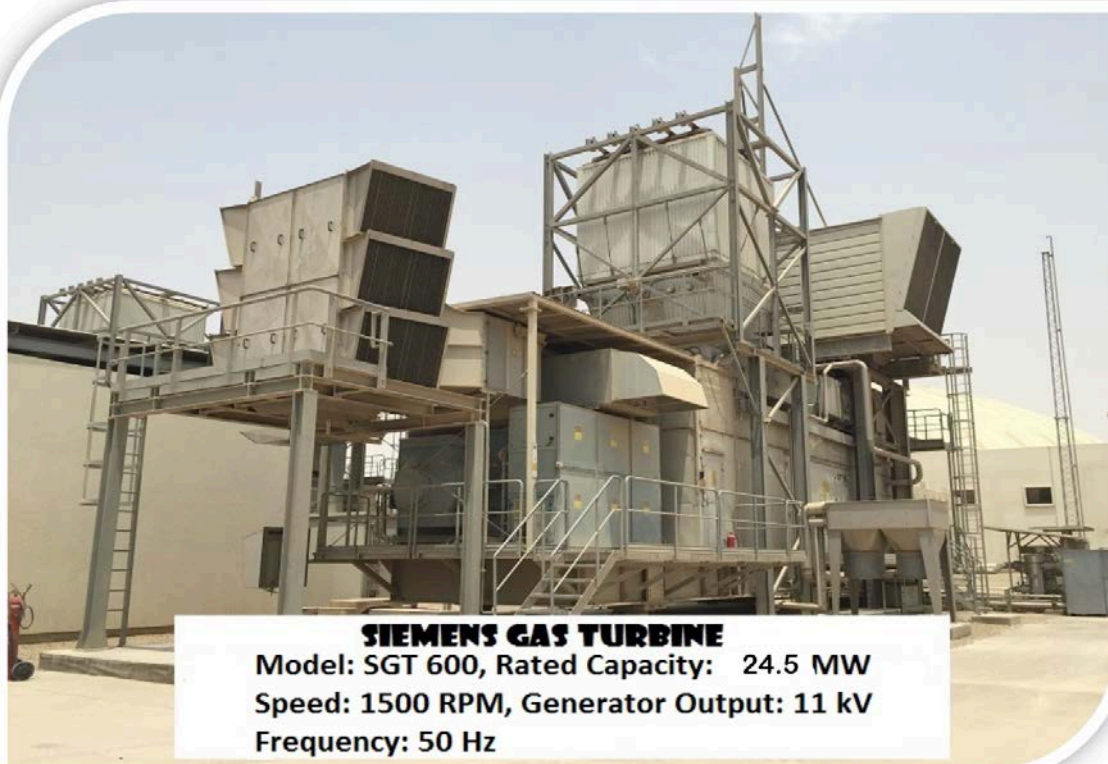
Frequently maintained according to European high standard by the OEM

Speed 1,500 rpm, Generator Output 11 kV, Frequency 50 Hz

Emission ISO Standard at 15% O<sub>2</sub>

Original Dry Low NOX ( DLE ) Combustion Chambers

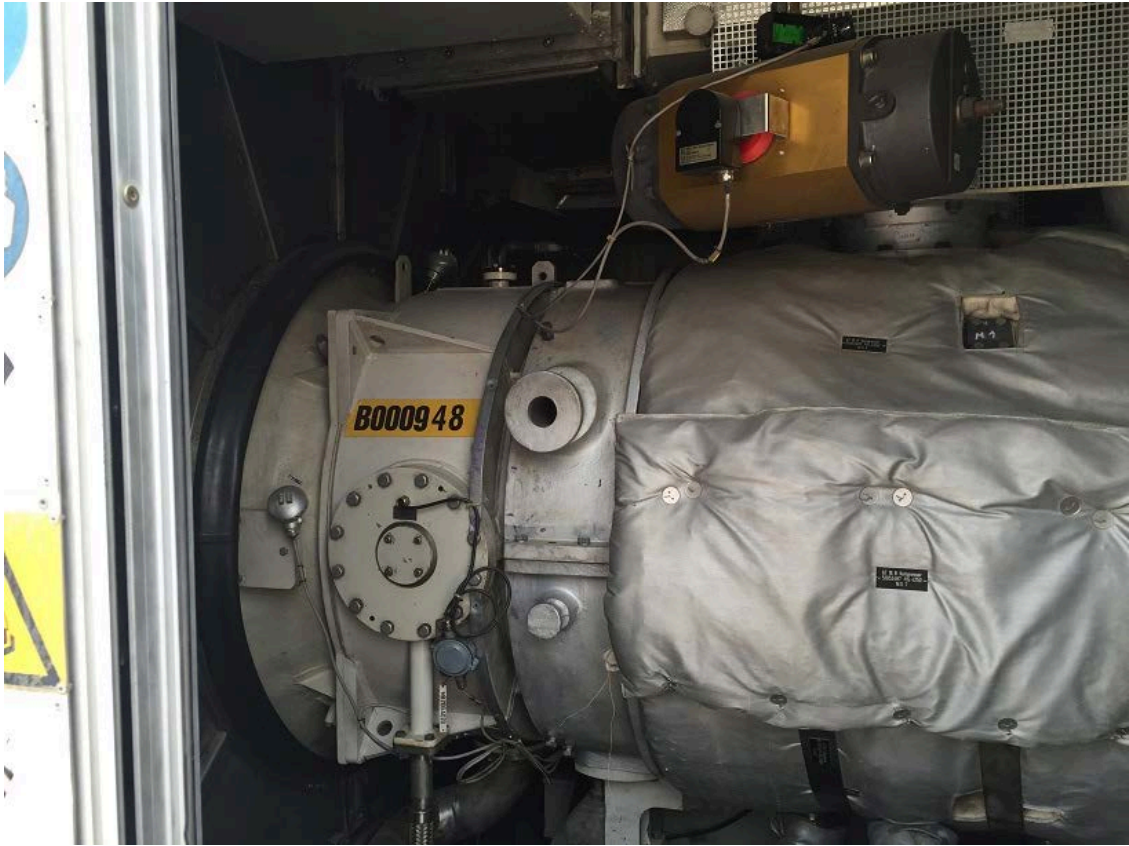
Inertial Filtration and Single Stage F9



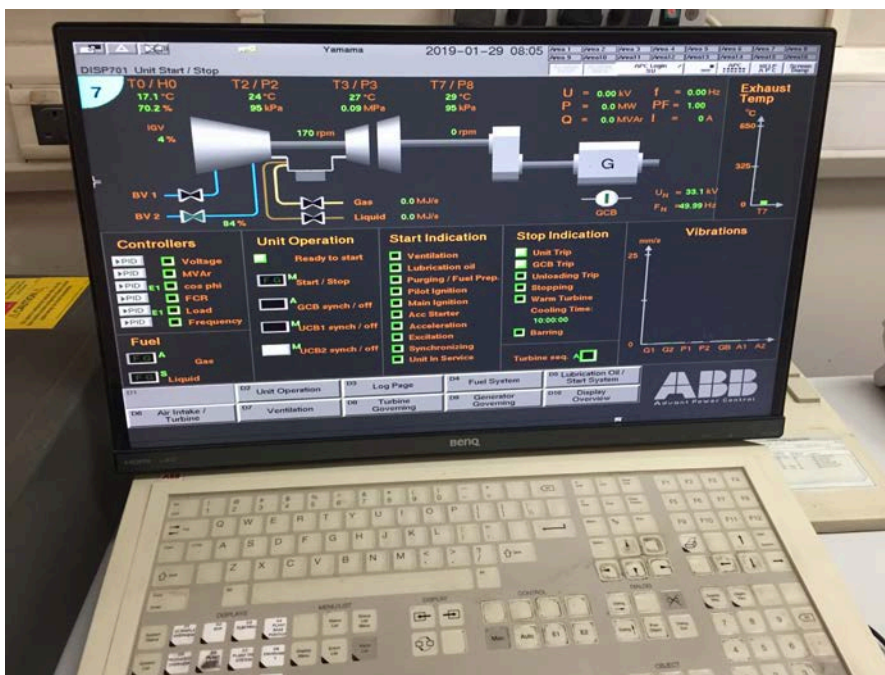
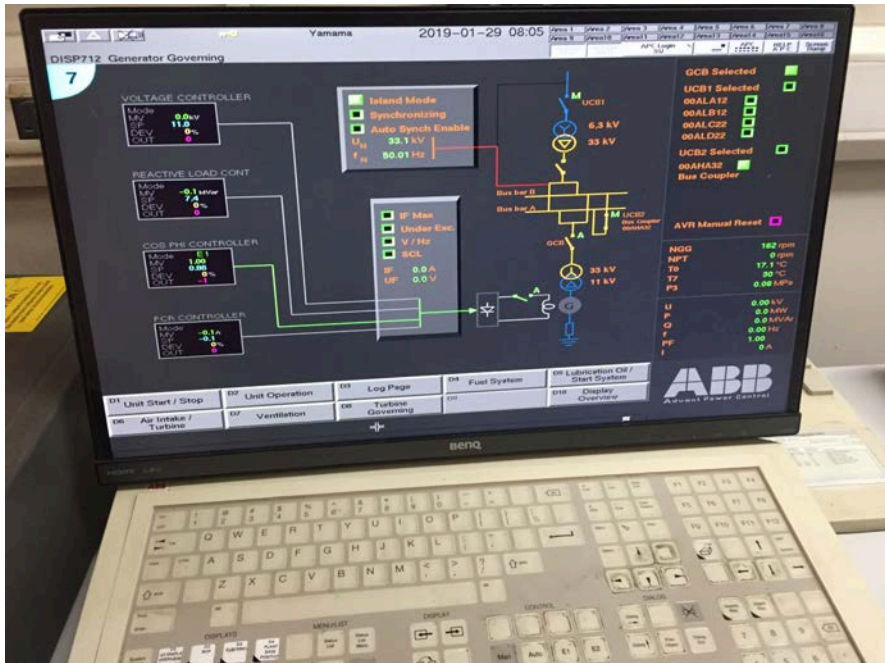
YCC Siemens Gas Turbine Generator					
Model SGT600 Rated Capacity 24.5 MW (ISO), 11KV , 50 Hz.					
NAME	RUNNING HOURS (RH)	Equivalent Operating Hours (EOH)	Last Preventive Maintenance Done	EOH at the Maintenance Done	Date of Maintenance
GT1	83255	61097	LEVEL A	48626	22-07-18
GT2	82686	61692	LEVEL A	49971	23-07-18
GT3	82981	62061	LEVEL D	60688	17-10-21
GT4	87362	64658	LEVEL D	60377	17-04-21
GT5	72490	56688	LEVEL D	56688	31-10-21
GT6	51974	39542	LEVEL A	36564	12-05-17
GT7	78529	59428	LEVEL C	37841	27-02-16
GT8	73045	54728	LEVEL A	42805	11-02-17
GT9	57729	43084	LEVEL A	33115	10-08-17



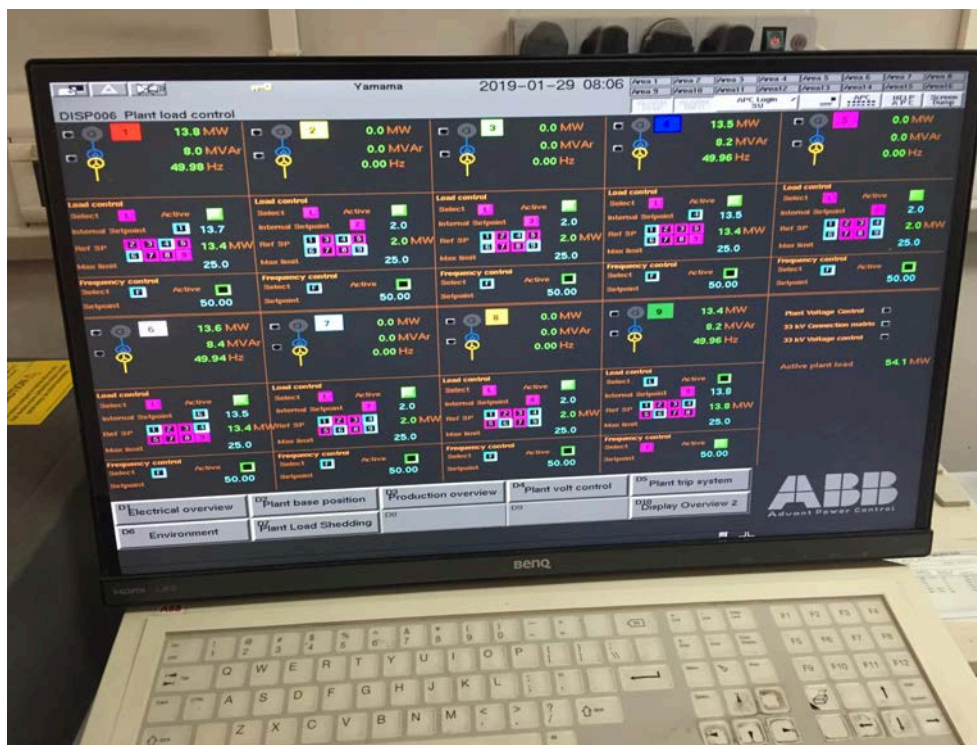




# SIEMENS Gas Turbine Is Operated On ABB Advant Power Control







SIEMENS Gas Turbine Available Spare Parts list (Specimen)

A	B	C	D	E	F	G	H	I
Item#	Group	Item #2	Description	Balance	Locat#	AverageCo	Order U	Approx. Total C
1			Combusitor, Part No. 2408533-G, Mant. Siemens Industrial Turbomachinery for SGT800 Gas Turbines	1	FG.01P.05	2800000	EA	2,800,000.00
2			SGT800 Combustion Chamber Reconditioned <del>xxx</del> Part No. 2408539-E (FOR G.T. PLANT)	1	FG.23P.05	2600000	EA	2,600,000.00
3			Stator Ring Segment, PT. # 2407514-1	48	AM.04.D.03	16839.01	EA	780,272.48
4			Outer Cone, Part No. 2408344-1, for GAS TURBINE SGT 800	2	FG.23P.04	16835.06	EA	333,870.12
5			Cartridge, Filter Element, Type: IMRS-760-DUP-F-Y, Indult Ref.: 0406-02383 Dia. 115 x 760 Stainless Steel/Monocelglasshde	16	DQ.00.00.00	19705.18	EA	315,282.88
6			Guide Vane 2, Pt. # 2407531-A	4	AM.04.C.01	55453.99	EA	221,815.96
7			GAS FILTER SET EL-T1003P10-300,CONTAINING THREE ELEMENT AND ONE GASKET FOR FILTER HOUSING CFC03	30	AM.08.C.01	7366.43	SET	220,692.90
8			THRUST BEARING PAD (A25B88H-246), PT. # ICS03840-1, FOR GAS TURBINE SGT 800	14	AM.05.F.01	13301.89	EA	186,226.46
9			Ion exchange elements IXE 430, P/no.#349088.	8	AO.01P.05	14500.53	EA	116,004.24
10			Transformer Differential Protection Siemens Siprotec, Order No. (MLFB) 7UT631-4EB92-1BEO1BB-4U4, Manufacturer: Siemens (Using DIGSI 4 V4.71 Operating Program)	4	AM.03.A.01	26252.3	EA	105,009.20
11			Sensor: PIVDT -- 80 Degree for ATEX <sub>0</sub> Environment, P. No. 6900 0383 D, Siemens KKS No. MEB10AE005-B01	6	AM.08.E.01	17282	EA	103,692.00
12			Exciter (Ignition), KKS No. MEB10AX005-101, Mant. Champion Aero space, Mant. P.# 305076; Siemens, P# 2404819-1	4	AM.08.D.01	25216.35	EA	100,865.40
13			SCPEV Pt. # 2405440-1	50	AM.04.C.03	2000.98	EA	100,049.00
14			Tapcon 240 ULTC Controller Tapcon, Aux. Supply Option AM14-20mA, Order Info: Tapcon 240-AN1, Mant. Maschinentabrik Reinhausen GmbH (MR)	3	AM.03.G.04	31200	EA	93,600.00
15			Sensor: Conditioner ATEX, Signal Amplifier, Output 4-20 mA, P-Sup. +15 to 24 VDC, I max 80 mA, Part. No. 0448, Mod 69020266,	6	AM.08.C.01	14412	EA	86,472.00
16			Thermocouple Complete, Pt. # 2405741-1	8	AM.04.D.02	9659	EA	77,272.00
17			DSAI 1304 Analog Input Board 16 Canals DIK, Part No. 3BSE018292R1, Mant. ABB	2	AM.08.B.03.00	32760	EA	65,520.00
18			Charging Rectifier, Type: POR3, 440/23, Input: 400, 3 Phase, 50/60 Hz, 35A1, Output: DC 400V, 25 Amp, Manufacturer: KRAFT	1	AM.09.A.03	64669.62	EA	64,669.62
19			The Bolt, Pt. # 2405260-1	4	AM.04.C.04	15173.26	EA	60,693.04
20			GAS FILTER SET EL-T1003P10-300,CONTAINING THREE ELEMENT AND ONE GASKET FOR FILTER HOUSING CFC03	8	DQ.00.00.00	7366.43	SET	58,851.44
21			Inlet Conversion Kit, Part No. 38008185, Inlet Head Conversion Kit for Air Drieger T2M050, Mant. Ingersoll Rand	8	AM.01.B.01.00	7340.75	EA	58,726.00
22			PROFIBUS-DP INTERFACE (Profibus printed circuit card), Manufacturer: ABB, Type: C154V1, Communication Card board, Prod. No. 3BSE014668R1, Order No. P100228114	3	AM.03.E.03	18558.04	EA	55,674.12
23								

Power Plant Spare Parts



