

Diesel Generator Power Station

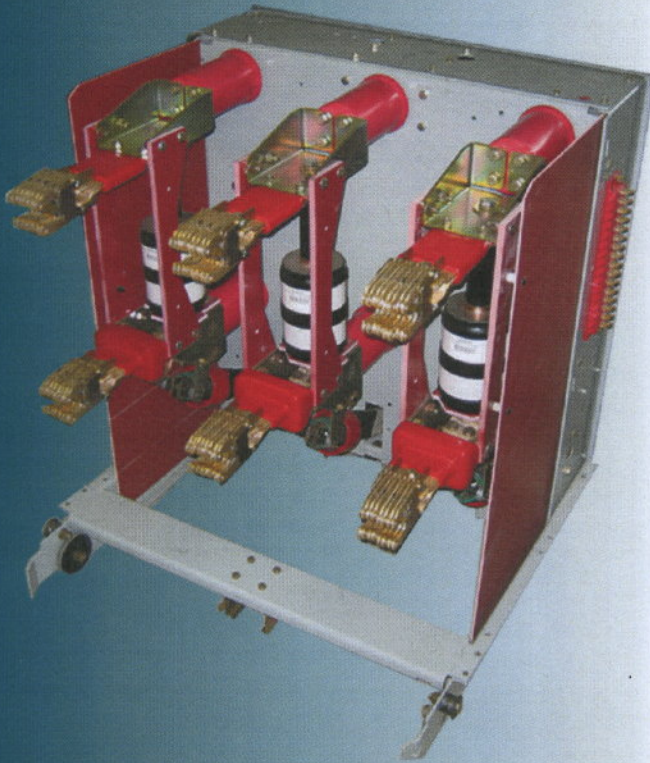
complete electrical power station, consisting of 20 Caterpillar diesel generator sets. Originally acquired and installed by the PUD of Grant County, Washington in the spring of 2001 for the purpose of helping meet power shortages in the Northwest U.S., this equipment was deemed surplus by the county in December, 2006.

Each individual unit is comprised of a CAT 3516/3516B diesel engine, a CAT SR4B generator rated at 1.6 MW (continuous), metal housing, mufflers and fault resistors. The entire package includes two Siemen Metal-clad 15kV switchgears, one for each 10 generator units; as well as diesel fuel storage and delivery, and a SINOx-NOX emissions abatement system. Originally installed by Black & Veatch Corporation, with Caterpillar responsible for startup, testing and commissioning the units, all equipment has been subsequently fully maintained to specification by the county PUD. Service records are provided for your convenience.



Contents

- Pictures
- Equipment
- Service and Maintenance Records



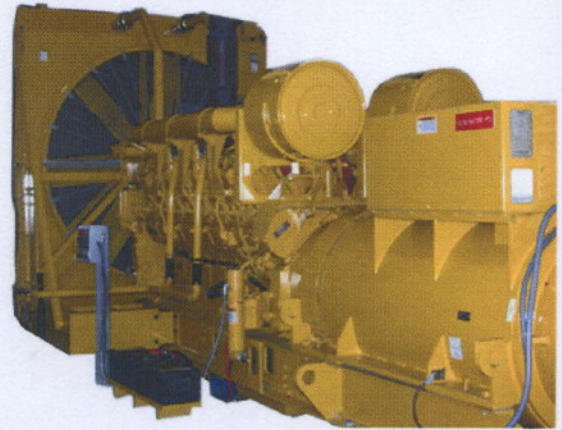




DIESEL ENGINES

CAT 3516B TA DIESEL ENGINE

- **Reliable, rugged, durable design**
- **Field-proven in thousands of applications worldwide**
- **Four-stroke-cycle diesel engine combines consistent performance and excellent fuel economy with minimum weight**



UNIT: 10 - WEST
SN: 6HNO1550 VHGW0010
RUN HOURS: 230

UNIT: 9 - WEST
SN: 6HN01536 VHGW0009
RUN HOURS: 217

UNIT: 8 - WEST
SN: 6HN01535 VHGW0008
RUN HOURS: 124

UNIT: 7 - WEST
SN: 6HN01531 VHGW0007
RUN HOURS: 258

UNIT: 6 - WEST
SN: 6HN01530 VHGW0006
RUN HOURS: 234

UNIT: 5 - WEST
SN: 6HN00768 VHGW0005
RUN HOURS: 242

UNIT: 4 - WEST
SN: 6HN01543 VHGW0004
RUN HOURS: 206

UNIT: 3 - WEST
SN: 6HN01542 VHGW0003
RUN HOURS: 203

UNIT: 2 - WEST
SN: 6HN01548 VHGW0002
RUN HOURS: 172

UNIT: 1 - WEST
SN: 6HN00718 VHGW0001
RUN HOURS: 252

UNIT: 1 - EAST
SN: 6HN00771 VHGE0001
RUN HOURS: 329

UNIT: 2 - EAST
SN: 6HN00720 VHGE0002
RUN HOURS: 341

UNIT: 3 - EAST
SN: 6HN00792 VHGE0003
RUN HOURS: 285

UNIT: 4 - EAST
SN: 6HN00829 VHGE0004
RUN HOURS: 342

UNIT: 5 - EAST
SN: 6HN00797 VHGE0005
RUN HOURS: 349

UNIT: 6 - EAST
SN: 6HN00824 VHGE0006
RUN HOURS: 358

UNIT: 7 - EAST
SN: 6HN00772 VHGE0007
RUN HOURS: 397

UNIT: 8 - EAST
SN: 6HN00810 VHGE0008
RUN HOURS: 385

UNIT: 9 - EAST
SN: 6HN00871 VHGE0009
RUN HOURS: 439

UNIT: 10 - EAST
SN: 6HN00907 VHGE0010
RUN HOURS: 453

Diesel Fuel System

Description

Complete diesel fuel delivery system, including 480 VAC pumps with housing, delivery system piping, piping insulation with heating system, six (6) 20,000 gallon nominal (18,000 gal. normal) diesel tanks.



GENERATORS

Description

Caterpillar SR4B 13.8 kV, 60 Hz, 1640 KW Generator Rated 1600 KW Continuous & 2000 KW Standby
Metal housing for generator unit
Fault Resistors

CAT SR4B GENERATOR

- Matched to the performance and output characteristics of Caterpillar engines
- Optimum winding pitch for minimum total harmonic distortion and maximum efficiency
- Single point access to accessory connections
- UL 1446 recognized Class H insulation



Switchgear

Description

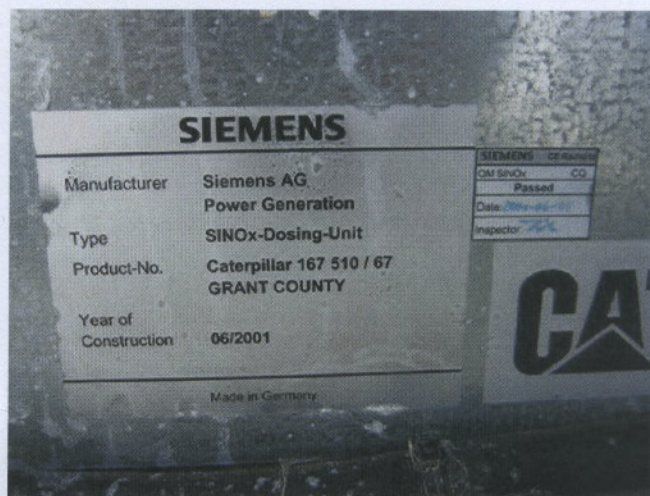
Siemens Metal-clad 15 kV switchgear for 10 generator units
Including automated switchboard controls by Power Lynx
Insulated metal housing for switchgear, complete with HVAC and lighting.



Emissions Abatement System

Description

Complete SINOx-NOX emissions abatement system, including four (4) 6,000 gallon urea tanks, urea delivery system piping, 480 VAC pumps with housing, piping insulation with heating system, heated metal building to house urea tanks and complete Siemens urea delivery system including 20 dosing units.



ACCESSORIES

Description

Complete 480 VAC and 120/240 VAC power delivery system less 13.2 kV Gnd Wye/480 VAC Gnd Wye power step-down transformers.

Oil storage system for Caterpillar engines, including two (2) 6,000 gallon tanks, one for new oil and one for old oil.

Complete facility perimeter chain link fencing including all gates.

All spare parts and material for diesel generator units.

All manuals, testing, diagrams, and technical documents.



Service and Maintenance Records



Unit G-1 East

wonum	description	work type	status

Unit #	Date	Mach. Hours	Fluid	Quantity
G-1E	6-9-01		Start eng at idle, warmed up 20 min, ran at rated speed 30 min.	
	6-16-01		Started eng at idle for warm up	
	7-4-01		Oil	5gal
	7-5-01		Oil	5gal
	7-11-01		1 st valve adjust	
	7-17-01	19	Oil & filter chg	
	7-27-01		Antifreeze	30