

Four (4) Lockheed C-130H Hercules

Lockheed C-130H INFORMATION PACKET

CONFIDENTIALITY CLAUSE

This presentation and its contents are confidential and proprietary to CSDS and are intended solely for the use of the individual or entity to whom it is presented.

By attending this presentation, you agree not to disclose, distribute, or reproduce any part of this material without the prior written consent of Lionheart International Inc.

Unauthorized use, disclosure, or reproduction of this material is strictly prohibited and may result in legal action.

If you are not the intended recipient, please notify Lionheart International Inc immediately and destroy all copies of this presentation.

EXPORT & ITAR DISCLAIMER

The recipient of this presentation acknowledges and understands that certain information contained in this presentation or in an attachment to this presentation may be subject to export controls and restrictions including, but not limited to, the International Traffic in Arms Regulations (ITAR), the Export Administration Regulations (EAR) or the sanctions administered by the Office of Foreign Assets Control (OFAC). The recipient agrees not to disclose, transfer, or otherwise export or re-export any technical data or other restricted information to any Foreign Person (including any foreign national, foreign business or foreign government), whether in the United States or abroad, without fully complying with U.S. export control regulations, including obtaining any necessary license or other prior authorization required from the appropriate agencies of the U.S. Government.

C-130H Status

Four (4) Aircraft LM MSN 4652, 4835, 4836 & 5003 are available pending USG Authorization/Approval as part of a negotiated C-130 aircraft and inventory acquisition from a foreign Government.

All Aircraft have moderately low time

- Good Centre and Outer Wings
- Low Severity Factor and EBH

Avionics Modernization

- Fully Integrated Avionic System
- From 1994 To 2002
- Includes provisions for Self Protection System
- Digital Fuel Quantity
- EIDS
- ALL SFAR 88 SBs (GFI INCLUDED)
- MILICAS (INTEGRATED)
- -4A Cargo Handling System

SpAF TAIL N°	TYPE	MODEL	YEAR	LM S/N	FLIGHT HOURS	EBH
TL.10-01	C-130H-30	382T-55E	1983	5003	17,076	12,380
TK.10-07	KC-130H	382D-55D	1976	4652	16,084	16,228
T.10-08	C-130H	382C-92D	1979	4835	17,596	18,458
T.10-09	C-130H	382C-92D	1979	4836	19,296	20,570



TL.10-01 C-130H-30 Configuration Data

POS.	ENGINES (T56-A-15LFE)			PROPELLERS (54H60-117)		
	S/N	TSO	TT	S/N	TSO	TT
#1	AE-11134	4,723	-	23.4185	3.489	-
#2	AE-111014	3,455	-	23.2867	2.119	-
#3	AE-110050	3,680	-	23.6982	2.396	-
#4	AE-112181	3,888	-	23.2866	4.038	-

LM S/N	SPECIFIC.	YEAR	PROCUREMENT CONTRACT	FLYING HOURS
5003	382T-55E	1983	N/A	17,076

APU	
P/N	381116-1-8
S/N	P-1178
ETI	N/A
TT	4.172



Note: Serial number of Engines/Propellers/APU to be confirmed

TL.10-08 C-130H Configuration Data

POS.	ENGINES (T56-A-15LFE)			PROPELLERS (54H60-117)		
	S/N	TSO	TT	S/N	TSO	TT
#1	AE-112179	3,279	-	236381	4.164	-
#2	AE-109328	3,872	-	236924	4.919	-
#3	AE-111124	5,494	-	234013	3.572	-
#4	AE-109316	4,679	-	236377	7.502	-

LM S/N	SPECIFIC.	YEAR	PROCUREMENT CONTRACT	FLYING HOURS
4835	382C-92D	1979	GLX-376	17,596

APU	
P/N	381116-1-7
S/N	P-552
ETI	N/A
TT	8.252



Note: Serial number of Engines/Propellers/APU to be confirmed

TL.10-09 C-130H Configuration Data

POS.	ENGINES (T56-A-15LFE)			PROPELLERS (54H60-117)		
	S/N	TSO	TT	S/N	TSO	TT
#1	AE-111019	3,640	-	234023	7,001	-
#2	AE-109317	3,588	-	241994	2,812	-
#3	AE-109375	5,454	-	236445	6,640	-
#4	AE-111002	4,282	-	236982	4,617	-

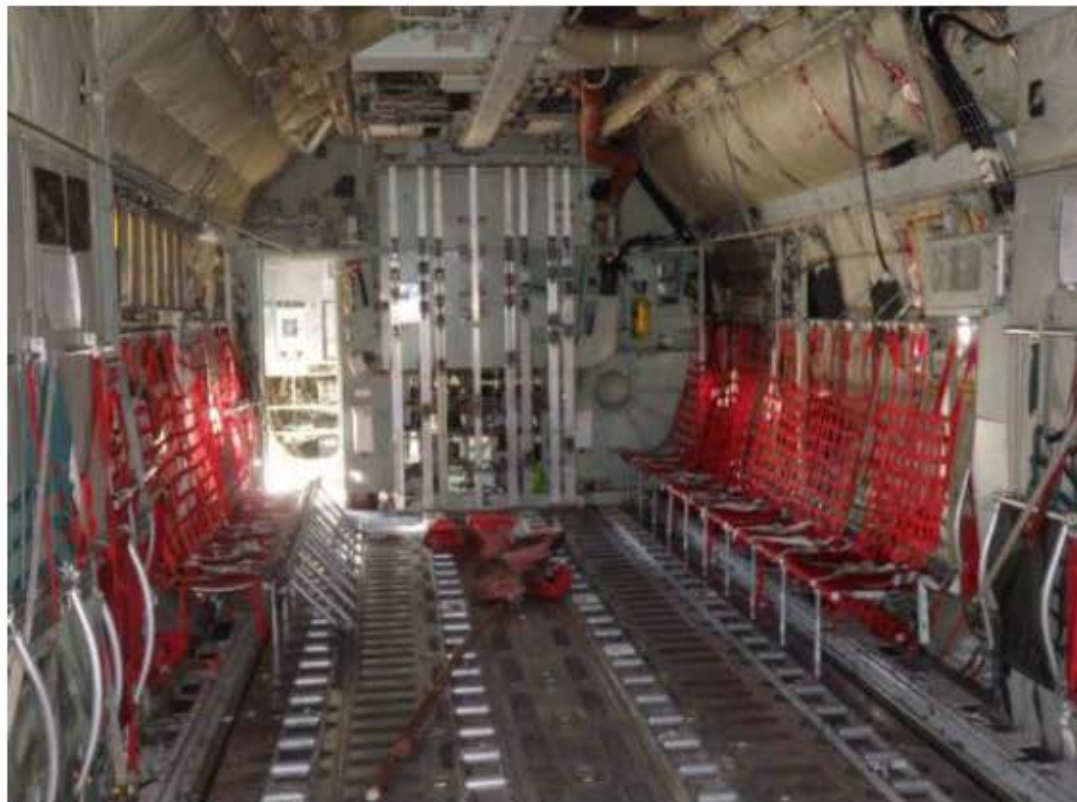
LM S/N	SPECIFIC.	YEAR	PROCUREMENT CONTRACT	FLYING HOURS
4836	382C-92D	1979	GLX-376	19,296

APU	
P/N	381116-1-7
S/N	P-1178
ETI	1,163
TT	12,110



Note: Serial number of Engines/Propellers/APU to be confirmed

C-130H Cargo Compartment



Avionics Configuration

Navigation

Dual Inertial Nav Sensor	LN-100G + GPS integrated
--------------------------	--------------------------

Flight Control

FLIGHT DIRECTOR Automatic Flight Control System	HONEYWELL(HW) (2) AFCPs (2) Mission Computers CDUs (3)
---	---

Automatic Flight Control Processor.	HW 5050183-9
-------------------------------------	--------------

Mission Computer	HW 5050185-9
Control Display Unit	HW 5160291

Other System Components

True Air Speed	(1) IDC-630
----------------	-------------

MILACAS-XR/TCAS II	(1)TAS-100
--------------------	------------

Missile Warning System	Provisions for AN/ALQ-156
------------------------	---------------------------

Dispenser	Provisions for ALE-47
-----------	-----------------------

Radio Communication

Intercom	(1) AN/AIC-18A
----------	----------------

Public Address	(1) AN/AIC-13
----------------	---------------

Radio HF	(2) AN/ARC-217 with KY-10
----------	---------------------------

Radio VHF	(2) 618M-4A /-5A
-----------	------------------

Radio UHF	(2) AN/ARC-164(V)
-----------	-------------------

ELT (406 Mhz)	HR SMITH 503-1
---------------	----------------

Radio Navigation

ADF	(2) ARN-149
-----	-------------

DF	(1) AN/ARA-50
----	---------------

VHF Nav VOR/ILS/GS/MB	(2) AN/ARN-147(V)
--------------------------	-------------------

TACAN	(2) AN/ARN-118
-------	----------------

Radar Systems

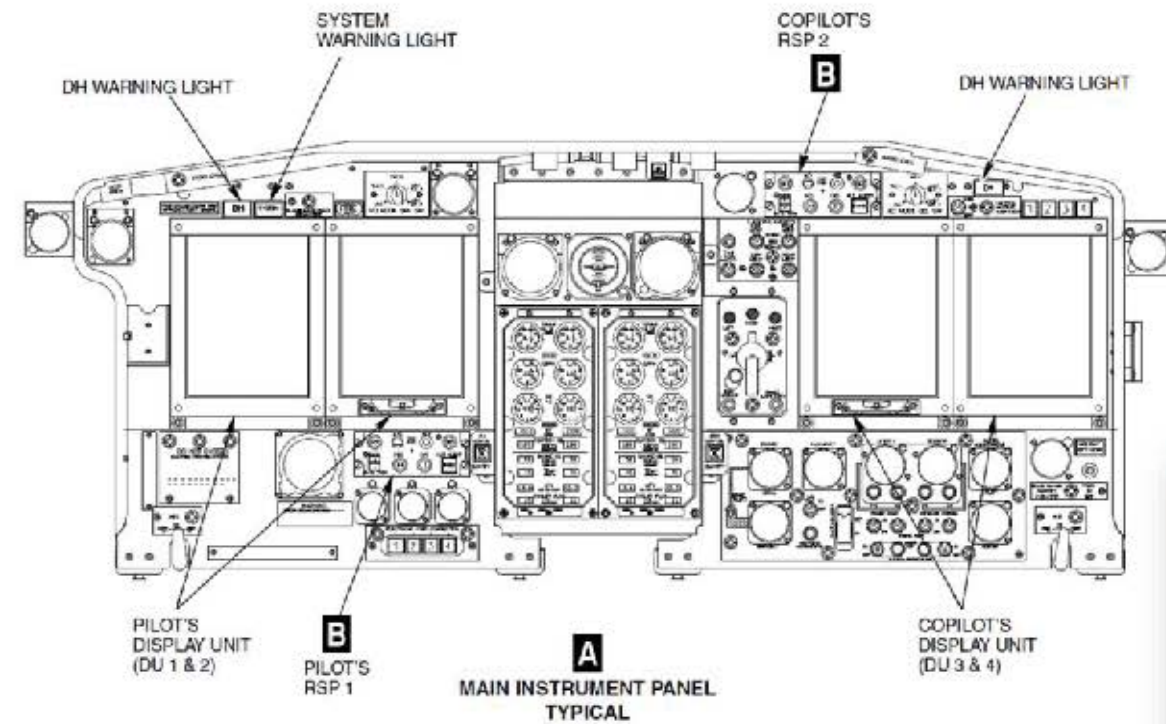
Weather and Search Radar System	BENDIX RDR-1400C
---------------------------------	---------------------

Radio Altimeter	(1) AL-101
-----------------	------------

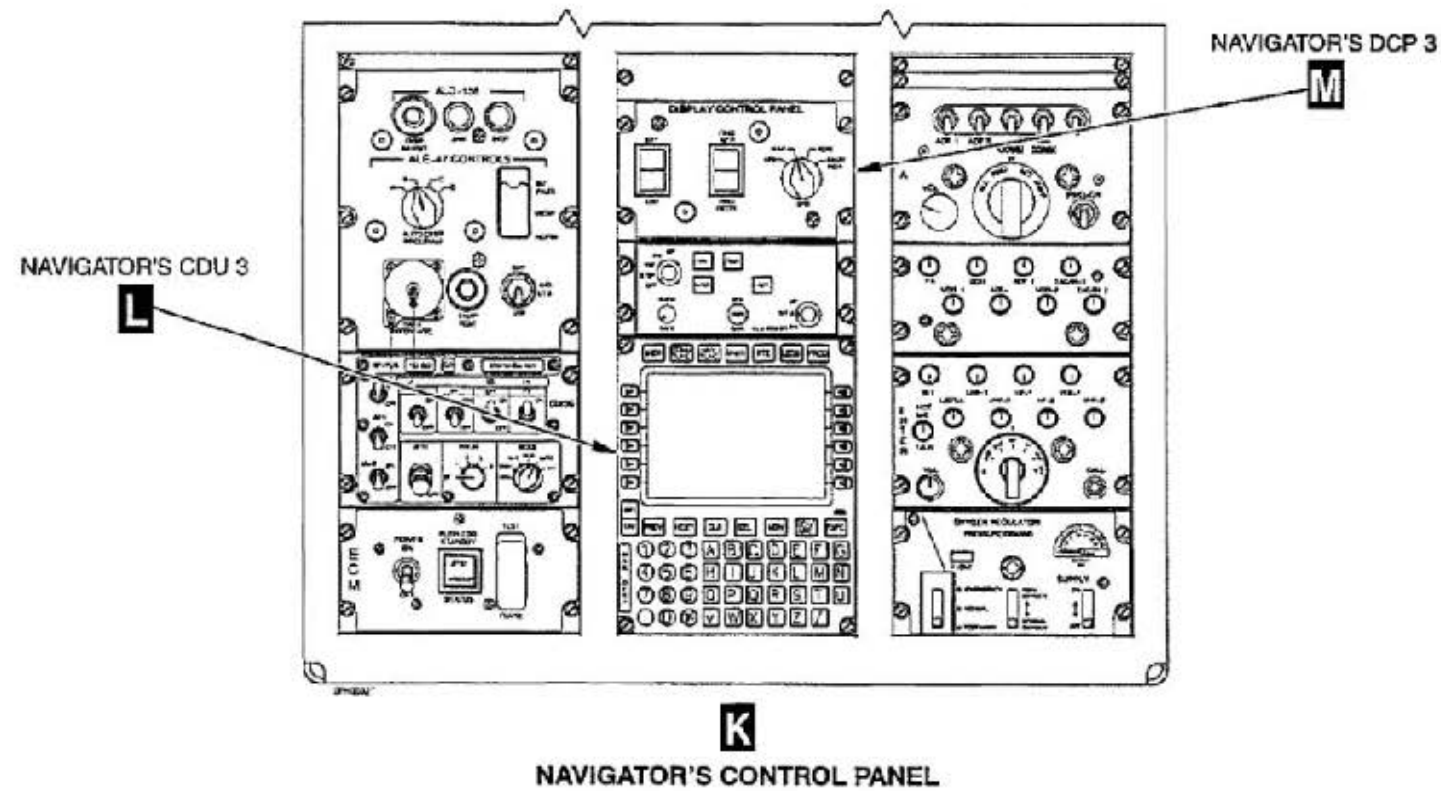
IFF/SIF	(1) AN/APX-119
---------	----------------



Avionics Cockpit Pilot/Co-Pilot

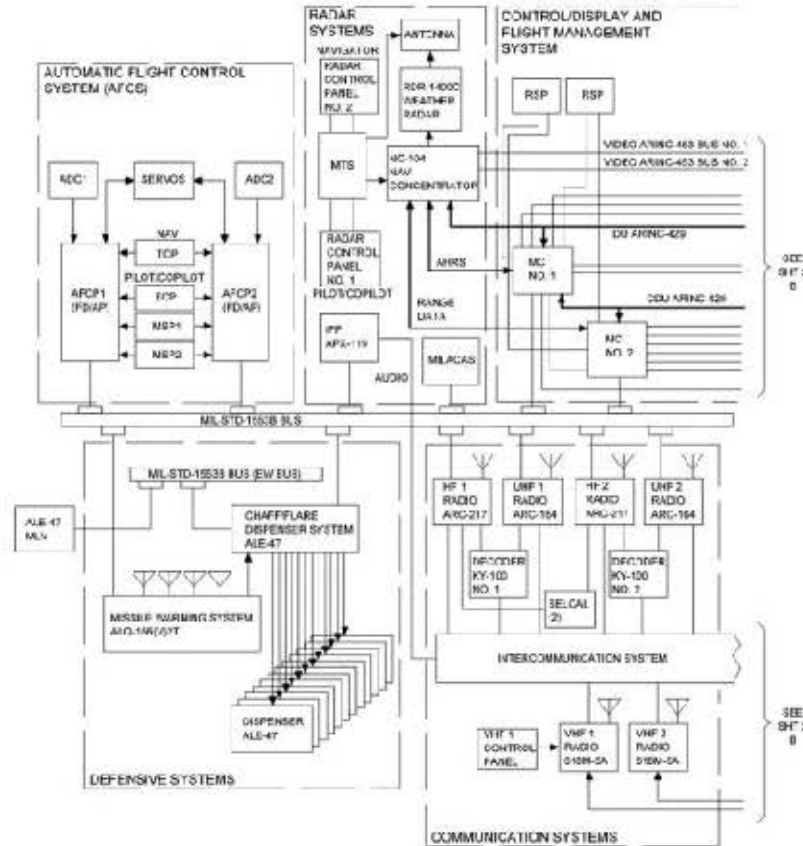


Avionics Nav Station

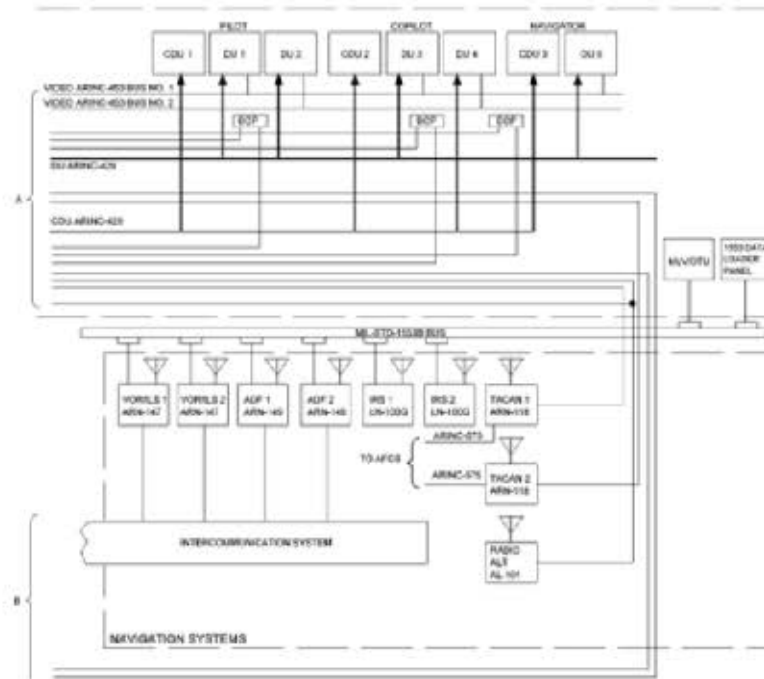


Avionics Configuration 4835/5003

Control Display and Flight Management System Interface Diagram



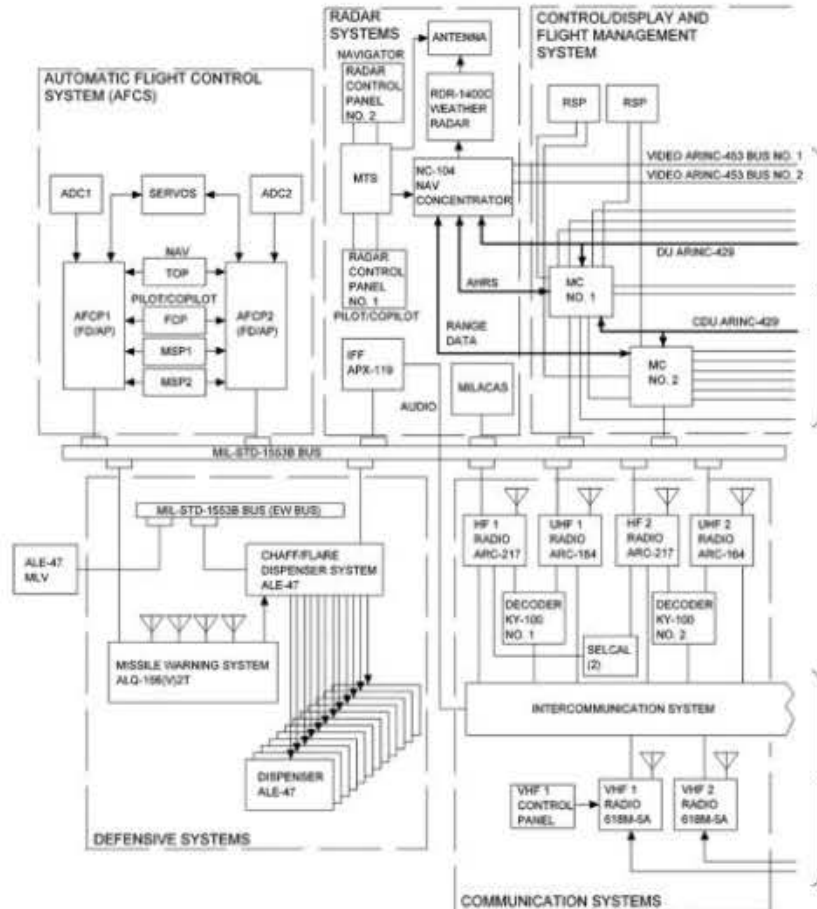
Control/Display and Flight Management System (Airplanes Not Modified By 1T-10-873)



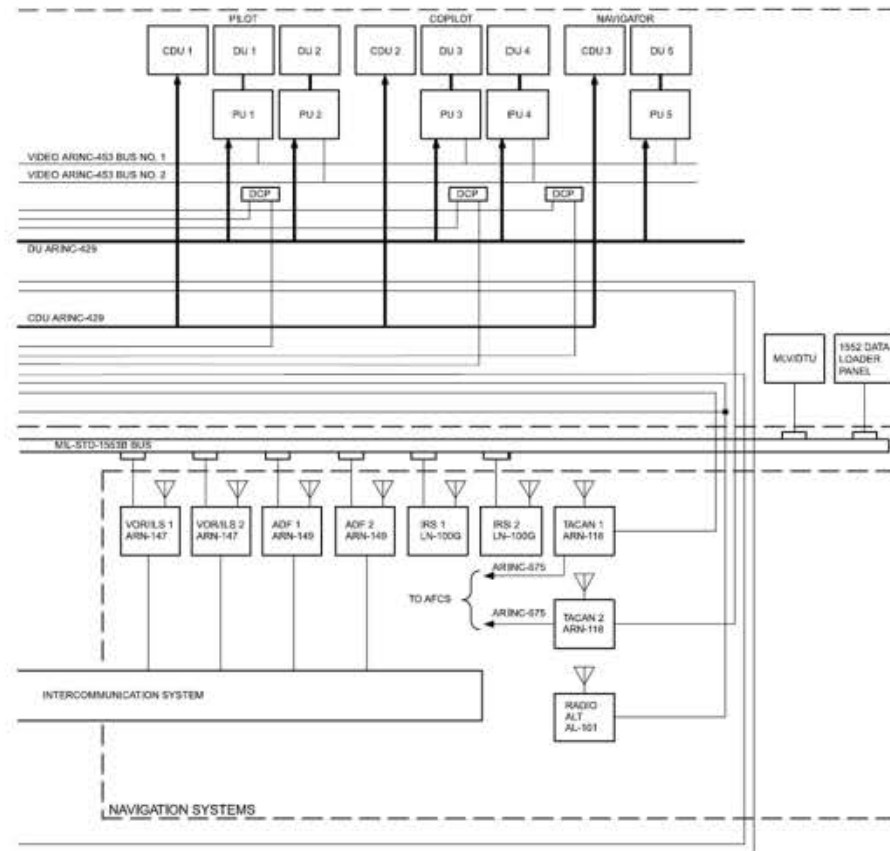
Note: Aircraft T.10-08 was not modified by 1T-10-872 and has the original HW Display Units (DU) P/N: 5050184-9.

Avionics Configuration 4652/4836

Control Display and Flight Management System Interface Diagram



Control/Display and Flight Management System (Airplanes Modified by 1T-10-873)



Note: Aircraft T.10-09 modified by 1T-10-872 and has Display Units (DU) P/N: K9321013A130 and Processing Unit (PU) P/N: 0149919000000 installed.

KC-130H Aircraft TK.10-07 MSN 4652

POS.	ENGINES (T56-A-15LFE)			PROPELLERS (54H60-117)		
	S/N	TSO	TT	S/N	TSO	TT
#1	AE-110996	4,709	-	238844	5.787	-
#2	AE-111054	1,522	-	232840	970	-
#3	AE-109317	4,193	-	241994	2.811	-
#4	AE-110043	2,362	-	234018	2.570	-

LM S/N	SPECIFIC.	YEAR	PROCUREMENT CONTRACT	FLYING HOURS
4652	382D-55D	1976	LAI-110	16,204

APU	
P/N	381116-1-7
S/N	P-560
ETI	N/A
TT	10,487



Note: Serial number of Engines/Propellers/APU to be confirmed

TK.10-07 MSN 4652



KC-130H Refueling Capability

Operational Performance

The KC-130H with a low or variable speed drogue has been used to refuel a variety of helicopters including H-60 Blackhawk and CH-47 Chinook Helicopters fitted with air-to-air refueling probes.

Additionally, this aircraft can be utilized to refuel the following aircraft.

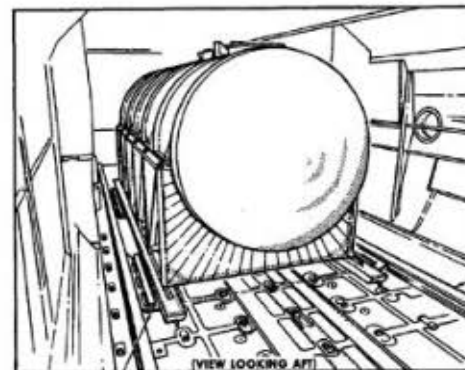
- F-18 (A/B/C/D) (USN, USMC, RCAF, SpAF).
- S-3 Viking (USN).
- Tornado IDS, ECR, F3, GR4/4A, PA 200 (Italian AF, GAF, RAF).
- Mirage
- Super PUMA
- V-22 Osprey
- Joint Strike Fighter
- SAAB Gripen



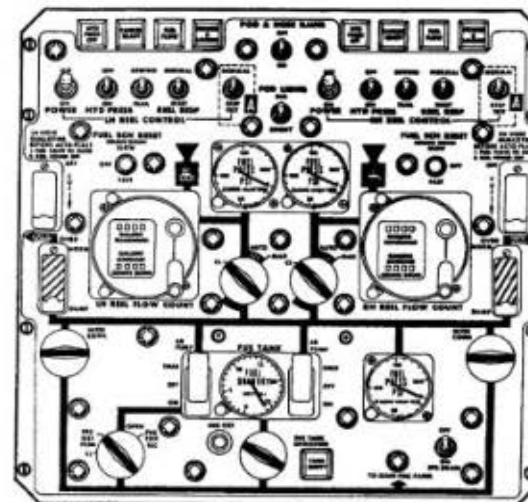
TK.10-07 Air-to-Air Refueling



Includes the 3600 Gallon
Fuselage Fuel Tank



Flight Engineer
Overhead Panel
For Tanker Operations



Propulsion System LM Serial Numbers 5003, 4835, 4836, 4652

ENGINE SERIAL	INSTALLED	TSN	TSO		PROP SERIAL	TSN	TSO
AE-110996	4652 Engine 1	14,772.10	4,707.15		238844	11,257.35	5,905.55
AE-111054	4652 Engine 2	11,589.35	1,521.10		236933	13,733.35	2,028.15
AE-109325	4652 Engine 3	13,877.30	4,187.10		236460	13,751.00	3,307.40
AE-111019	4652 Engine 4	13,060.30	2,362.05		234009	14,761.25	3,681.30
AE-111134	5003 Engine 1	15,206.20	4,722.50		234185	12,243.30	3,489.10
AE-110043	5003 Engine 2	13,862.20	3,454.00		234018	13,661.30	2,570.50
AE-110050	5003 Engine 3	13,604.30	3,679.00		234012	14,323.25	3,744.00
AE-112181	5003 Engine 4	13,203.55	2,887.00		232866	16,762.50	5,038.20
AE-112179	4835 Engine 1	14,130.55	3,278.35		236381	14,046.35	4,164.10
AE-109328	4835 Engine 2	14,467.05	3,871.40		236924	14,529.00	4,919.55
AE-111124	4835 Engine 3	16,098.20	5,493.05		234013	13,435.20	3,592.05
AE-109316	4835 Engine 4	14,849.00	4,678.35		236377	12,536.45	7,420.25
AE-110997	4836 Engine 1	14,687.35	3,639.50		234023	16,431.35	7,000.00
AE-109317	4836 Engine 2	13,750.25	3,587.15		241994	7,951.20	2,811.40
AE-109375	4836 Engine 3	16,274.45	5,452.40		236445	12,146.00	6,638.55
AE-111002	4836 Engine 4	14,920.50	4,281.20		236982	14,847.00	4,616.25

Required Depot Inspections

These Aircraft are currently following the Lockheed Martin SMP 515C-38 and are in long-term preserved storage. All aircraft require a C check Maintenance Inspection at a depot facility.



Technical Documentation Available

Completely Updated Documentation Package
(Lockheed Martin Contract)

- TM 382c-1-x (SpAF) Dec 2018
- From -1 To -15
- All Modifications Integrated
- All A/C Variants Included
- Flight Manual
- IPB (SMP 878 SpAF Only)



