

Video Borescope Report for RR3007 Series Engine

Client:	Reason for Insp: Condition Evaluation	PO# 2812
Engine Serial #: 33	Position: #1	Engine Series: -A1/1
Aircraft Type: EM145EP	MSN: -----	Aircraft Registration:
Date of Insp: 14/JUL/2025 TSN: 26,767 CSN: 16,977	Location:	Technical Data Used: RR MM 72-00-00-700-801 Dated: 20/MAY/2021

Data Plates:



Engine Disposition:

Needs a shop visit to clean it up. No Unserviceable findings

SECTION 1: HIGH PRESSURE COMPRESSOR

High Pressure Compressor (HPC): Reference Task 72-30-00

Stage 1: *Blades display heavy amounts of environmental build-up. Compressor wash suggested*



Stage 2: *Blades display heavy amounts of environmental build-up. Compressor wash suggested*



Stage 3:

Blades display heavy amounts of environmental build-up. Compressor wash suggested



Stage 4:

Blades display heavy amounts of environmental build-up. Compressor wash suggested



Stage 5:

Not inspected

Stage 6:

Not inspected

Stage 7:

Not inspected

Stage 8:

Not inspected

Stage 9:

Not inspected

Stage 10:

Not inspected

Stage 11:

Not inspected

Stage 12:

Not inspected

--

Stage 13:	<i>Not inspected</i>
------------------	----------------------

Stage 14:	<i>Not inspected</i>
------------------	----------------------

Disposition:	<i>Compressor wash suggested</i>
---------------------	----------------------------------

END OF SECTION 1

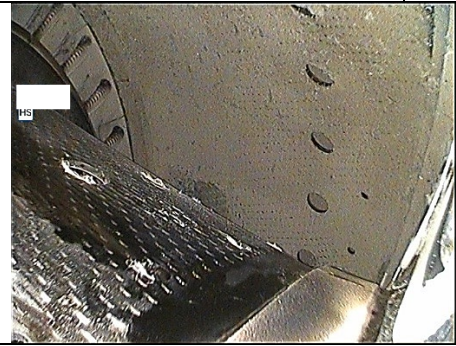
SECTION 2: COMBUSTION CHAMBER

Combustion Chamber (CC): Reference Task 72-40-00

Dome Assembly & Spectacle Plate:	<i>No damage or thermal distress</i>
---	--------------------------------------



Inner/Outer Combustion Liners:	<i>No burning, cracking, or missing material</i>
---------------------------------------	--

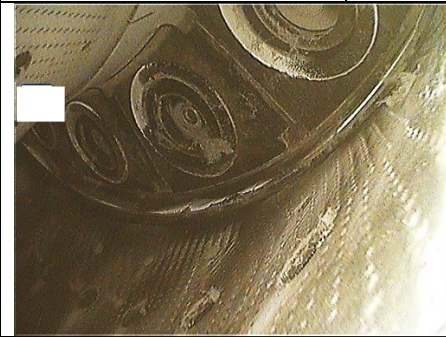


Fuel Spray Nozzles:	<i>No burning, cracking, carbon clogging, or missing material</i>
----------------------------	---



Fuel Nozzle Heat Shield Deflectors and Sleeves:

No cracking, burning, or missing material



Disposition:

Serviceable

END OF SECTION 2

SECTION 3: HIGH PRESSURE TURBINE

High Pressure Turbine Nozzle Guide Vanes (HPT/NGV): Reference Task 72-40-00

HPT Nozzle Guide Vanes:

No burning, cracking, or missing material



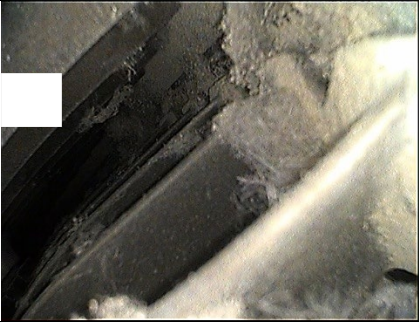
Disposition:

Serviceable


END OF SECTION 3

SECTION 4: HIGH PRESSURE TURBINE

High Pressure Turbine (HPT): Reference Task 72-50-00

HPT 1 Blades:	No damage or thermal distress. Blades display heavy amounts of environmental build-up. Compressor wash suggested
	

Disposition:	Serviceable
---------------------	-------------

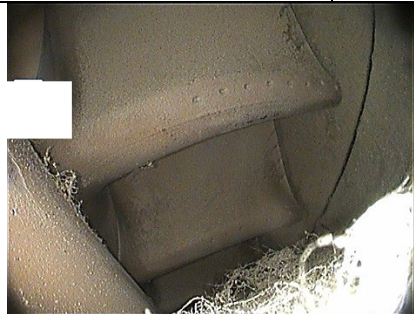
HPT 2 Blades:	No damage or thermal distress. Blades display heavy amounts of environmental build-up. Compressor wash suggested
	

Disposition:	Serviceable
---------------------	-------------

END OF SECTION 4

SECTION 5: HIGH PRESSURE TURBINE

High Pressure Turbine Shroud: Reference Task 72-50-00


HPT Shroud:	No damage or thermal distress
	

Disposition:	Serviceable
---------------------	-------------


END OF SECTION 5

SECTION 6: LOW PRESSURE TURBINE.

Low Pressure Turbine 1 - 3 (LPT 1 - 3): Reference Task 72-50-00

Stage 1:	<i>No damage or thermal distress. Blades display heavy amounts of environmental build-up. Compressor wash suggested</i>
	

Stage 2:	<i>No borescope access</i>
-----------------	----------------------------

Stage 3:	<i>No damage or thermal distress. Blades display heavy amounts of environmental build-up. Compressor wash suggested</i>
	

Disposition:	Serviceable
---------------------	--------------------

END OF SECTION 6

SECTION 7: LOW PRESSURE TURBINE


Low Pressure Turbine Nozzle Guide Vanes 1 and 3 (LPT NGV 1 and 3): Reference Task 72-50-00

Stage 1:	<i>No observable damage or thermal distress</i>
-----------------	---

Stage 3:	<i>No observable damage or thermal distress</i>
-----------------	---

Disposition:	Serviceable
---------------------	--------------------

END OF SECTION 7

<p><i>Inspector:</i> <i>Jeff Melvin</i></p> <p><i>Date: 14/JUL/2025</i></p>	
---	--