

# Solar TITAN 130 Specifications and Status Description (2009,34000hrs)

## One Solar TITAN 130 gas turbine generator sets:

- **Rated power output:** 15 MW
- **Electrical efficiency:** 31%
- **Complete simple cycle package** (all auxiliary systems included)

## At rated operating conditions per unit:

- **Heat Rate:** 9,630Btu/kWe-h
- **Exhaust flow :** 446,460 lb/h
- **Exhaust temperature:** 910°C
- **Steam Production:** 64.5-295.7 klb/hr
- **Exhaust Configuration:** Axial
- **Combustion System:** SoLONOX(DLE) Conventional

## Operational History

- **Commissioning Date:** June 2017
- **Shutdown Date:** April 14, 2025
- **Total Operating Hours:** 34,000 hours
- **Maintenance Protocol:** Regular maintenance performed per Solar's Operation Manual during operation period, with equipment functioning properly

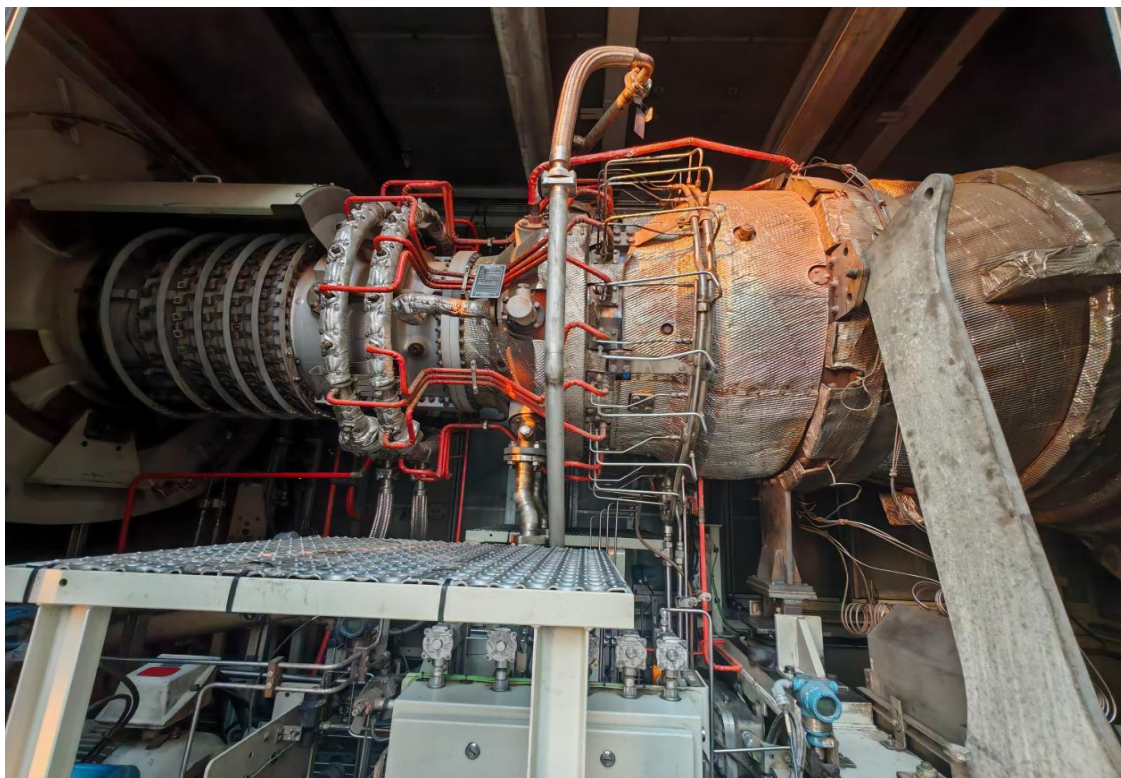
## Current Status

- The TITAN130 unit is currently maintained by the original operating team.
- Unit condition remains excellent.
- All auxiliary power generation equipment is complete and fully operational.

**Overall photo of the gas turbine**



**Gas Turbine Housing Condition**



## ABB Generator Set



## Gas Turbine Introduction